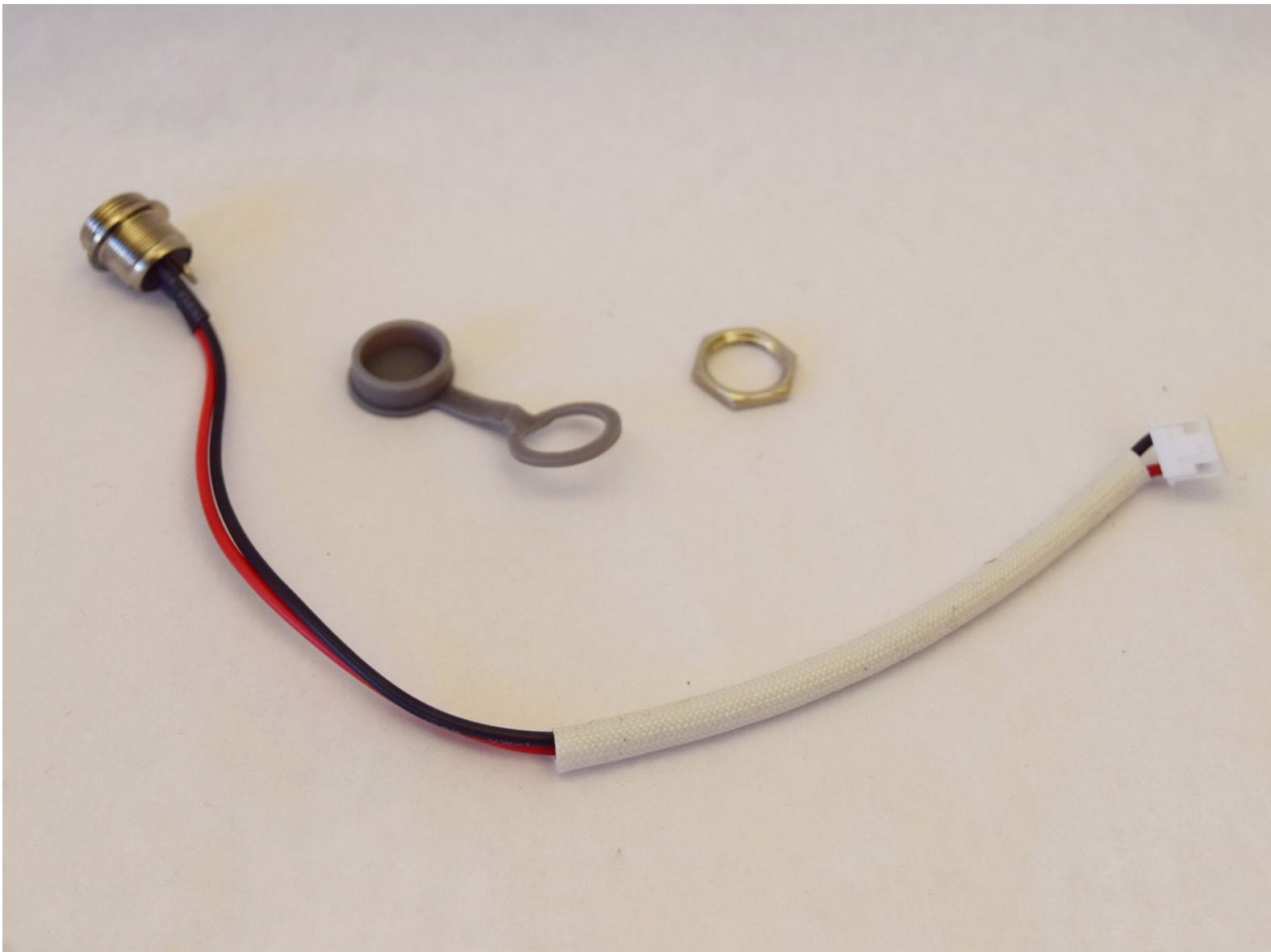




Hover 1 Eclipse Charging Port Replacement

How to replace the charging port of the Hover-1 Eclipse (Model Number HY-ECL-Hover-1 Eclipse).

Written By: Mina Dedijer



INTRODUCTION

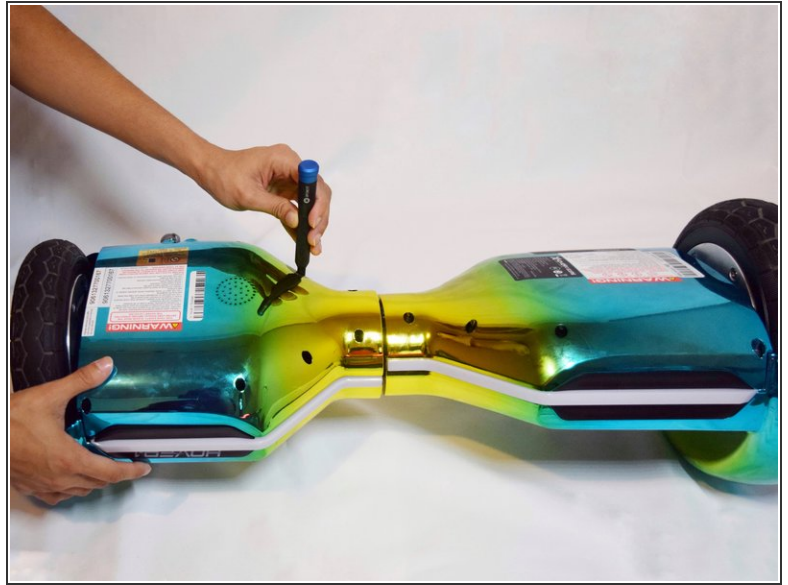
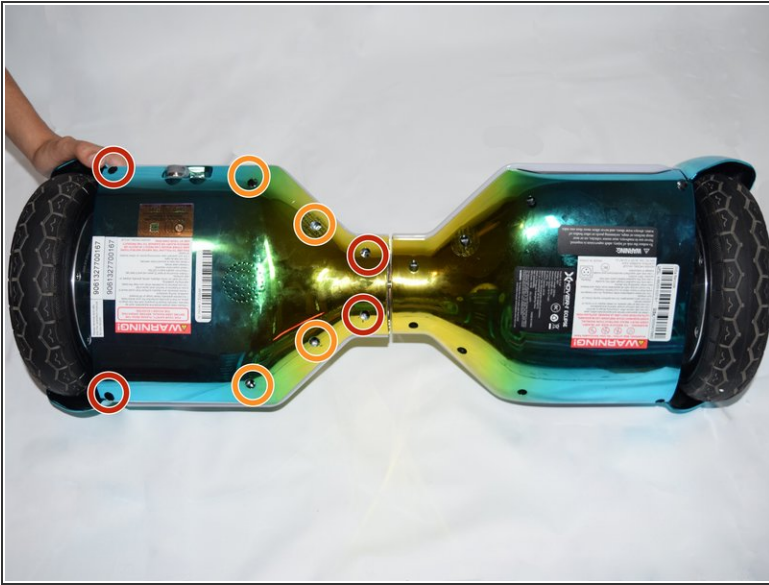
This guide will show you how to replace the charging port for your Hover-1 Eclipse. The charging port is where the charging cable plugs into the board. You may need to replace the charging port if your hover board is not charging correctly and the charging cable has already been replaced and/or ruled out as the root of the issue. In order to carry out this replacement, a knowledge of screwdriver usage and unplugging cords is needed.



TOOLS:

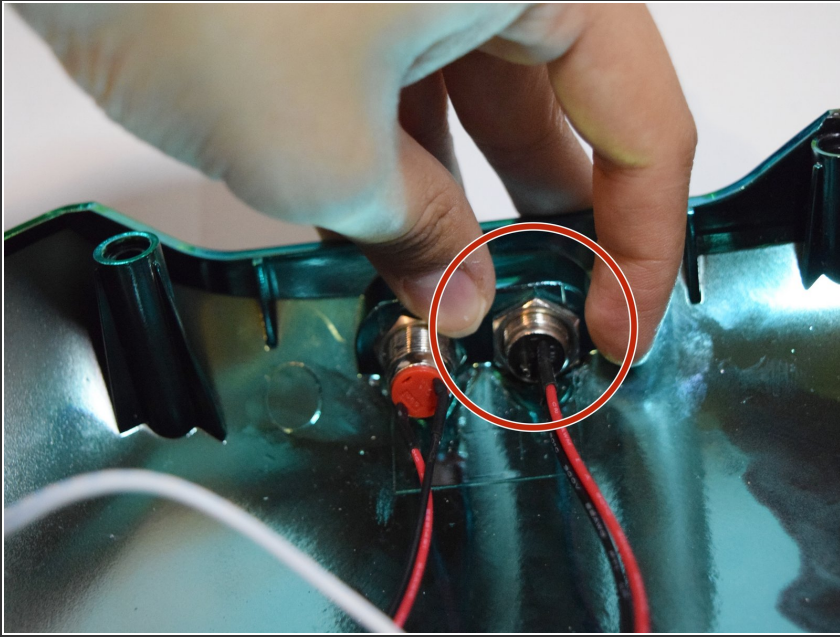
- [Phillips #1 Screwdriver](#) (1)
-

Step 1 — Charging Port



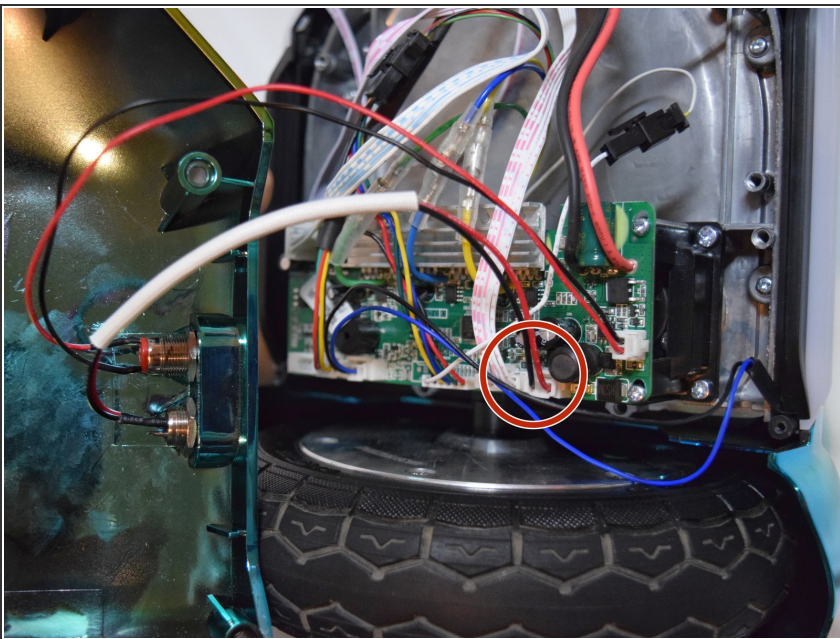
- Using a Phillips #1 Screwdriver, remove the four 11mm screws that surround the edge of the left side bottom shell piece.
- Using a Phillips #1 Screwdriver, remove the four 13mm screws that surround the edge of the right side bottom shell piece.
- ⓘ The order and placement of the 2 types of screws is mirrored for both sides of the bottom shell.
- Pull back and set aside the left bottom shell half. This shell half is still wired to rest of the hoverboard.

Step 2



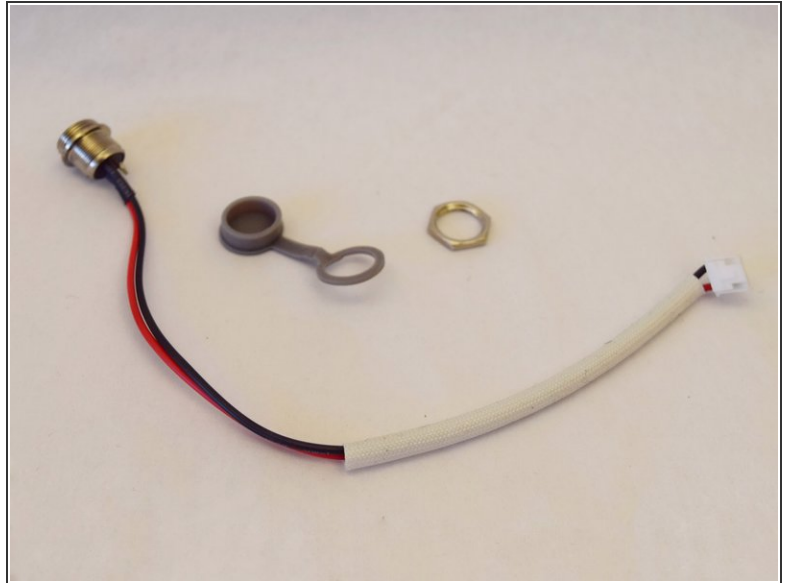
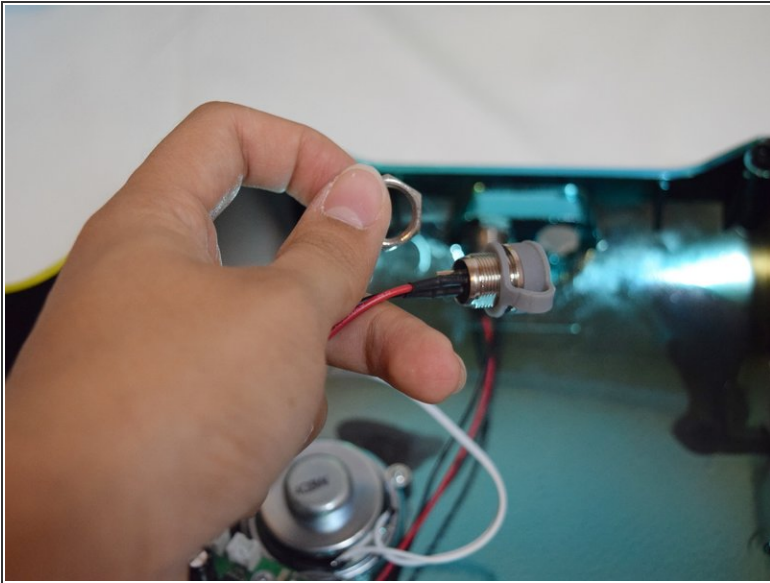
- Unscrew the ring around the inside section of the charging port.

Step 3



- Follow the wire back from the charging port to where it plugs into the board.
- Unplug the wire from the board, and pull it through the ring you previously unscrewed from the charging port.

Step 4



- Pull the charging port and wire attached to it out through the front side of the port.
- Take the plastic protector off of the charging port.

To reassemble your device, follow these instructions in reverse order.