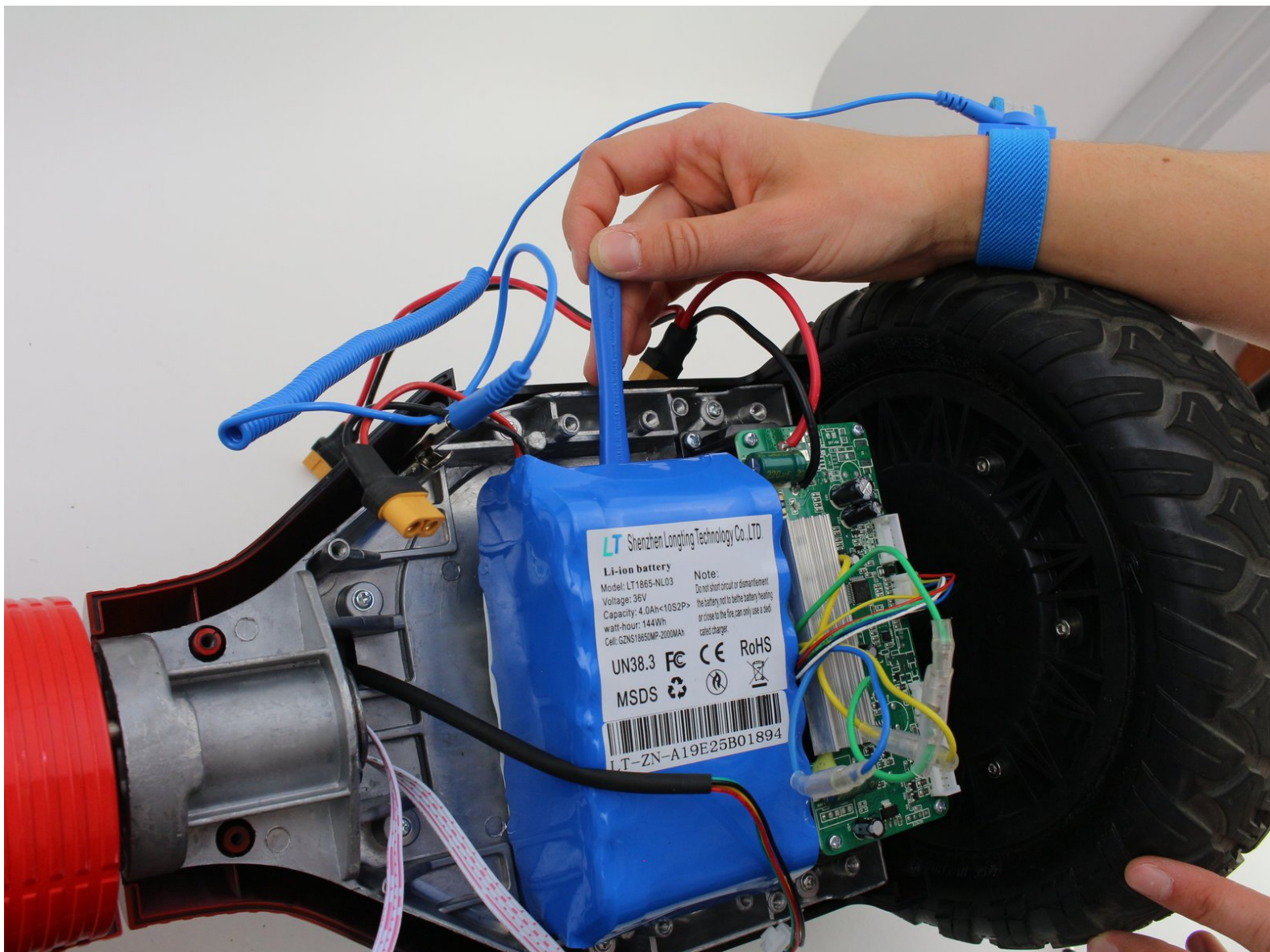




Hover-1 Charger Battery Replacement

This guide will help you replace the battery in your Hover-1 Charger (H1-COL).

Written By: Melanie Hardell



INTRODUCTION

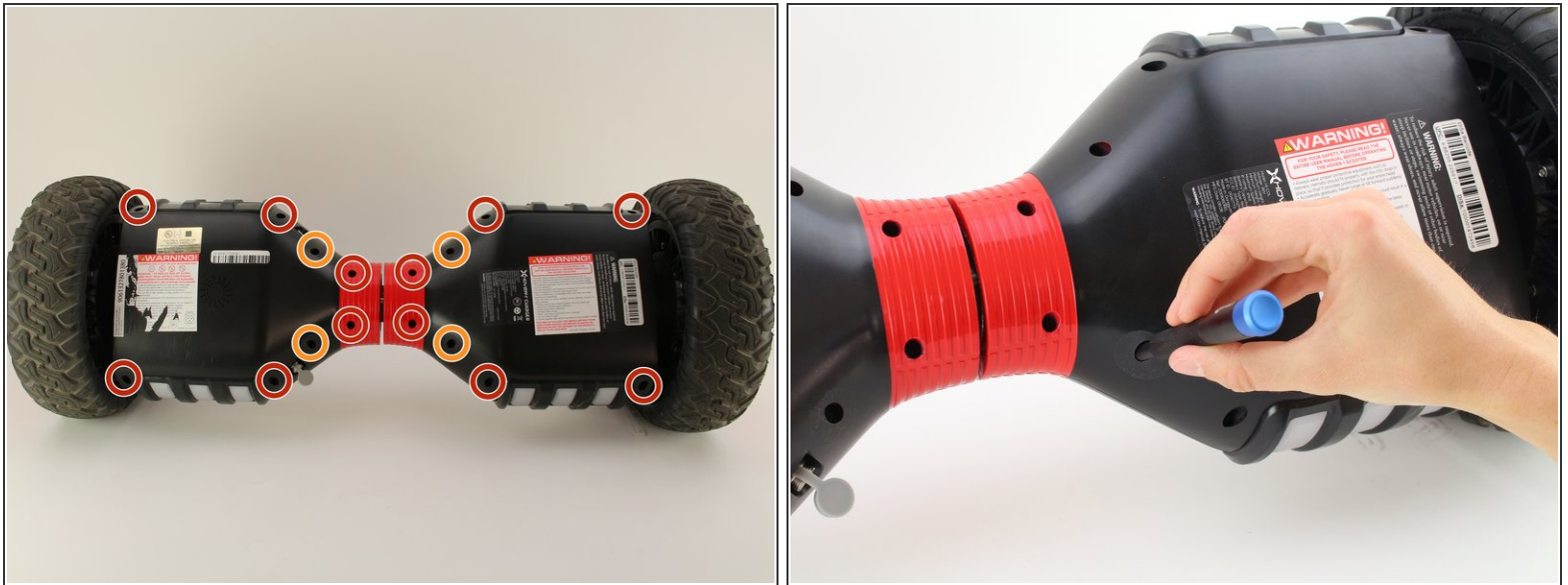
If your Hover-1 Charger (H1-COL) is having problems powering on or retaining a charge, there may be an issue with its battery. Before you begin disassembling your hoverboard, check out our troubleshooting pages that address [powering on](#) and [problems with charging](#). Make sure to [examine your hoverboard's charger](#) as well. If the problem persists, this guide will help you replace your hoverboard's battery.

The battery is held in place with adhesive; some force is required to remove it. Make sure to wear an anti-static wrist strap to protect the electronics against buildup of static electricity. Some screw housings are fragile; they may fall apart when the screw is removed.

TOOLS:

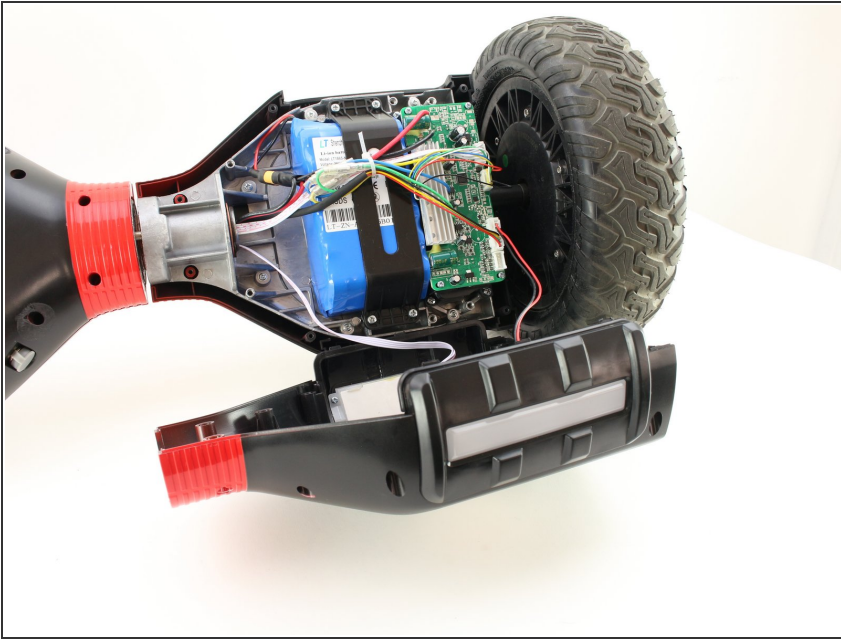
- [Phillips #2 Screwdriver](#) (1)
 - [iFixit Opening Tools](#) (1)
 - [Anti-Static Wrist Strap](#) (1)
-

Step 1 — Battery



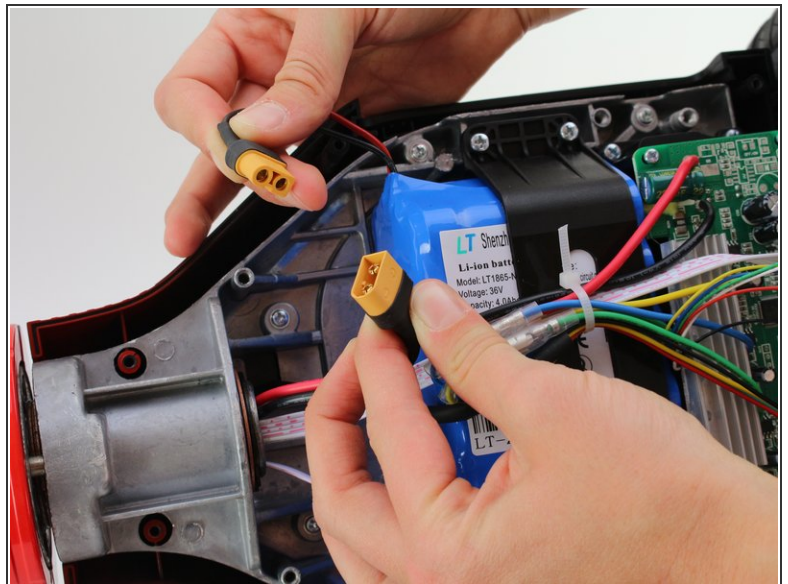
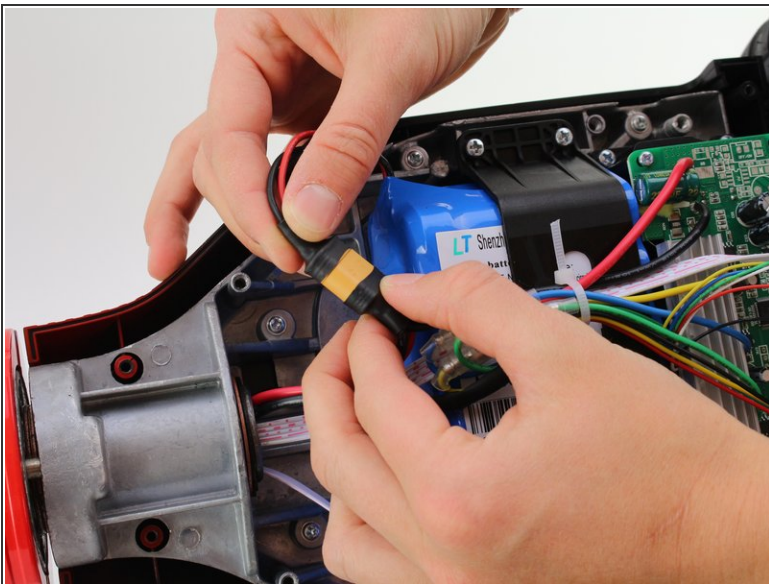
- Flip the hoverboard over so that the warning label is facing up.
- Remove the twelve 12 mm screws with a Phillips #2 screwdriver.
- Remove the four 10 mm screws with a Phillips #2 screwdriver.
- ⓘ The screws nearest to the wheels may be hard to access. Be sure to use a long, thin screwdriver.

Step 2



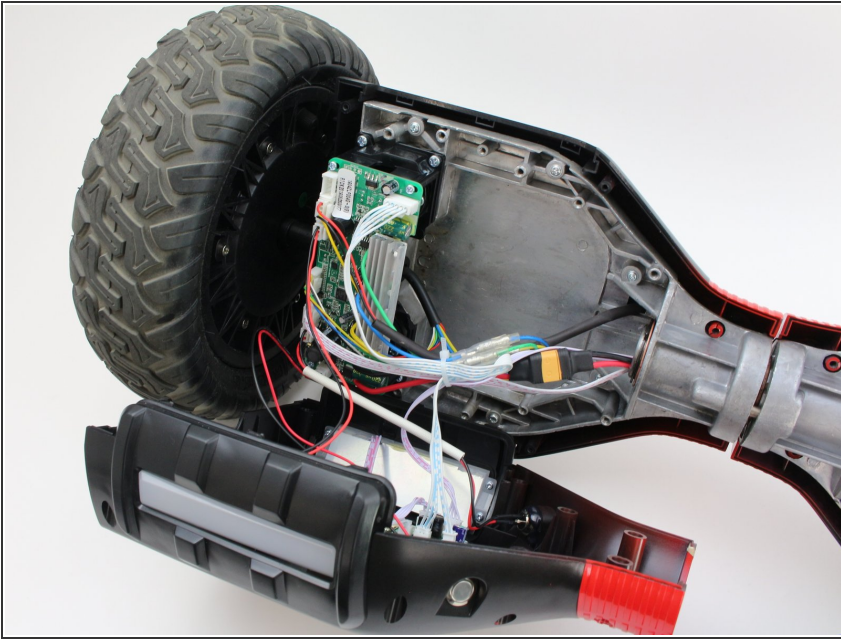
- Pull the right cover away from the hoverboard to expose the battery.

Step 3



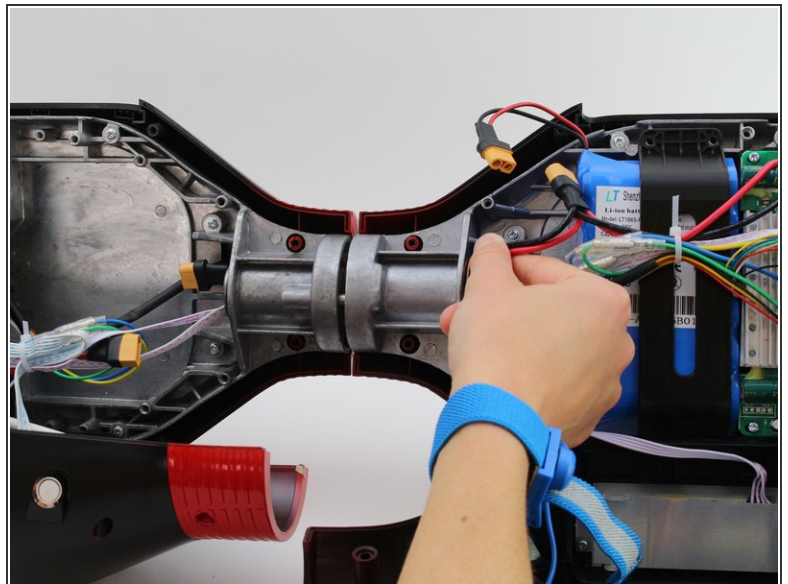
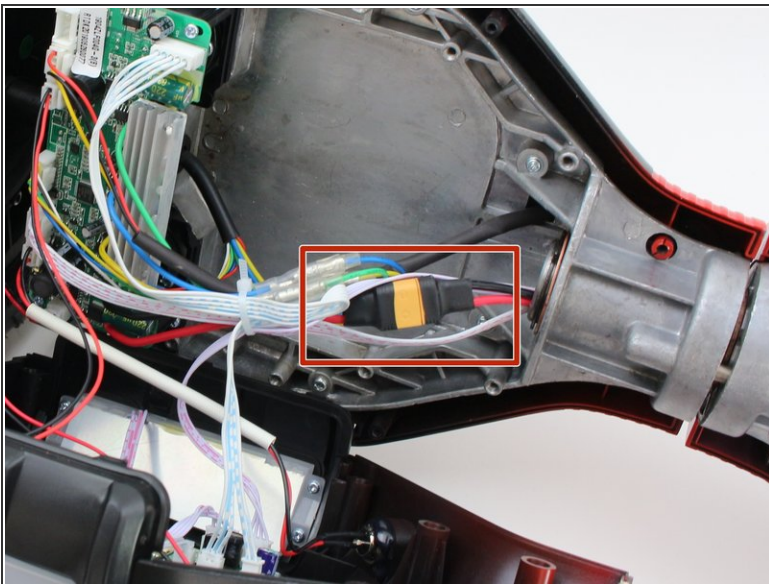
- Unplug the battery by disconnecting the two pronged black and yellow cable.

Step 4



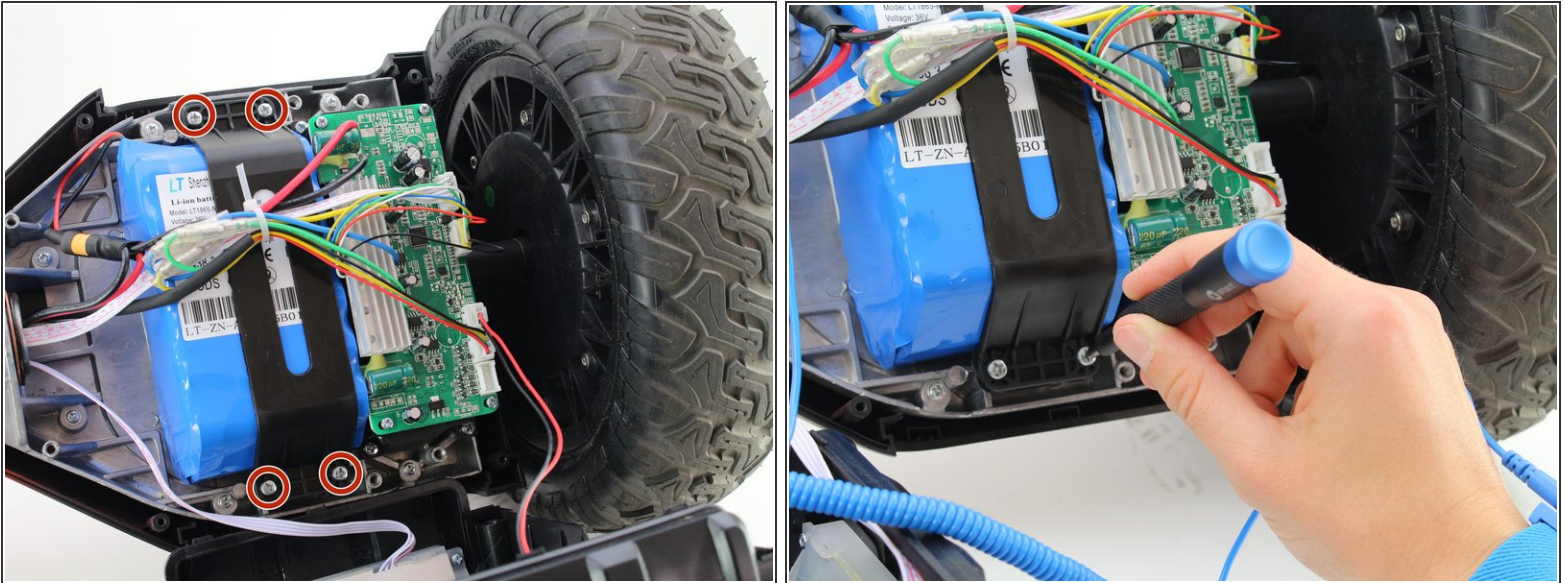
- Pull the left cover away from the hoverboard.

Step 5



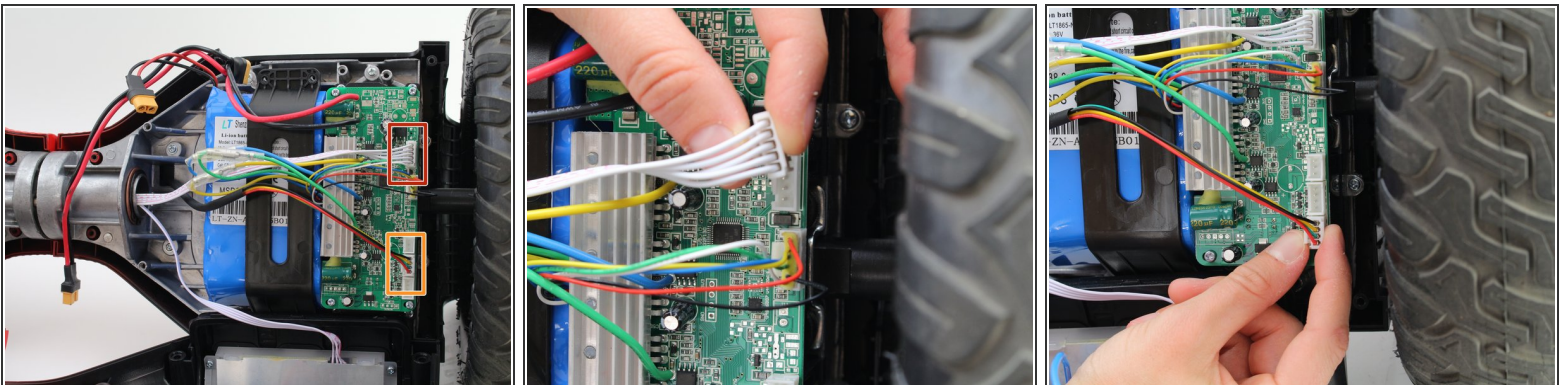
- Disconnect the two pronged black and yellow cable.
- Thread the cable through the middle cylinder of the hoverboard.

Step 6



- Unscrew the four 10mm screws that are holding the battery casing in place. Use a Phillips #2 screwdriver.
- ⓘ If there is a zip-tie connecting the wires together, carefully cut it with a wire cutters.

Step 7



- On the battery side, unplug the white five pin connector on the circuitboard.
- Unplug the black, yellow, green and red connector on the circuitboard.

Step 8



- Move all the loose cables to the side. Pull the battery casing away from the battery.

Step 9



- Use the opening tool to remove the battery from the metal casing.
- ⓘ The battery is stuck to the metal casing with strong adhesive; do not be afraid to apply a strong force with the opening tool.

Step 10



- Remove the battery.

To reassemble your device, follow these instructions in reverse order.