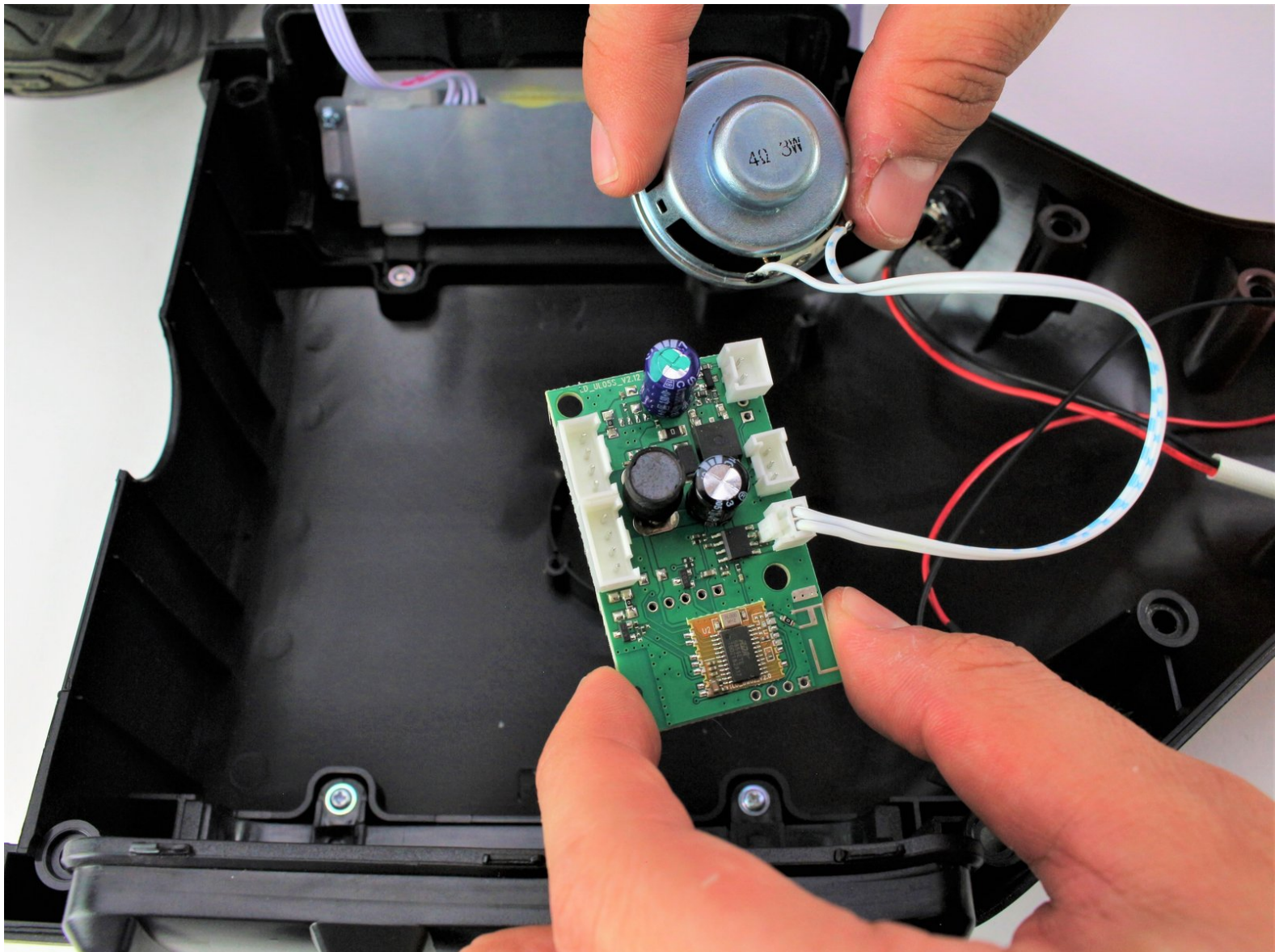




# Hover-1 Charger Bluetooth Speaker Replacement

This guide will help you replace the Bluetooth speaker in your Hover-1 Charger (H1-COL).

Written By: Bryson Shishido



---

## INTRODUCTION

If your Hover-1 Charger (H1-COL) is having audio problems, there may be an issue with its speaker. Before you begin disassembling your hoverboard, check out our troubleshooting pages that address [Bluetooth speaker](#) and [powering on](#). If the problem persists, this guide will help you replace your hoverboard's Bluetooth speaker.

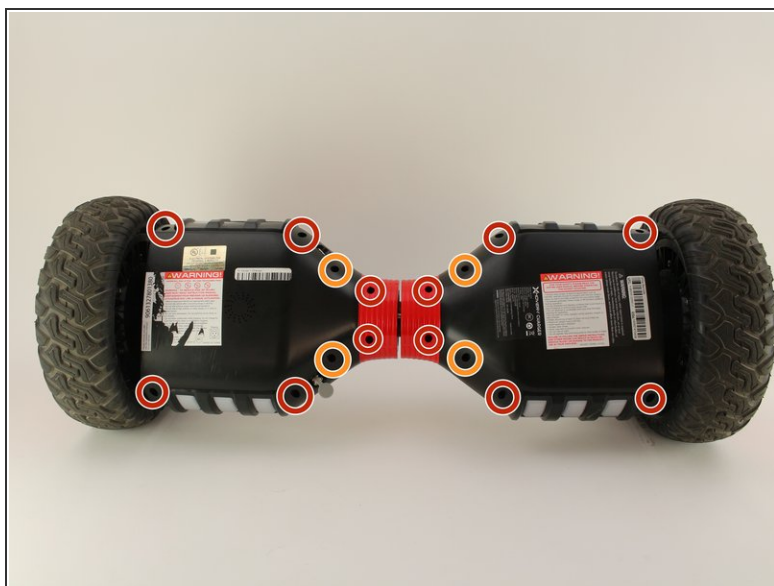
The speaker is very small and fragile, please handle with care. If possible DO NOT touch the cone or dust cap of the speaker, it could damage the speaker. Make sure to wear an anti-static wrist strap to protect the electronics against the buildup of static electricity. Some screw housings are fragile; they may fall apart when the screw is removed.

---

### TOOLS:

- [Phillips #2 Screwdriver](#) (1)
  - [Phillips #1 Screwdriver](#) (1)
  - [Anti-Static Wrist Strap](#) (1)
-

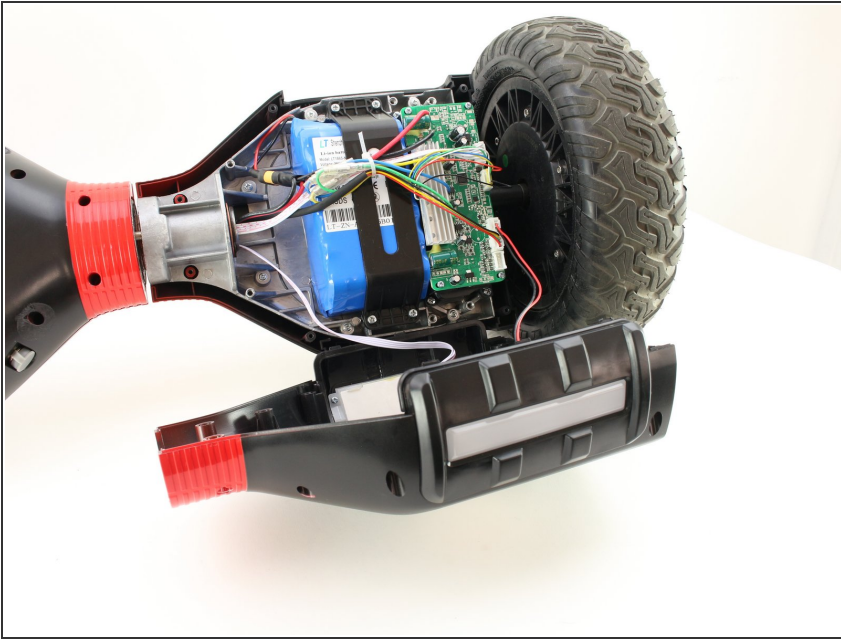
## Step 1 — Unplugging the Battery



- Flip the hoverboard over so that the warning label is facing up.
- Remove the twelve 12 mm screws with a Phillips #2 screwdriver.
- Remove the four 10 mm screws with a Phillips #2 screwdriver.
- ⓘ The screws nearest to the wheels may be hard to access. Be sure to use a long, thin screwdriver.

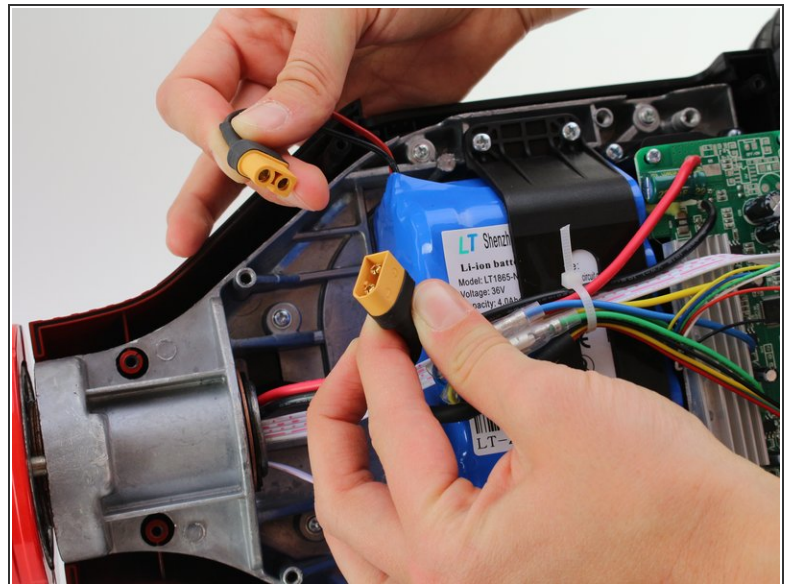
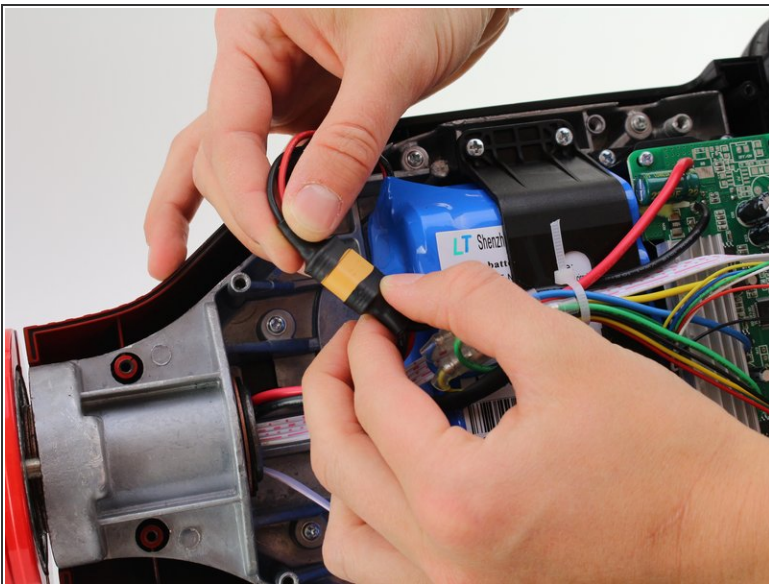


## Step 2



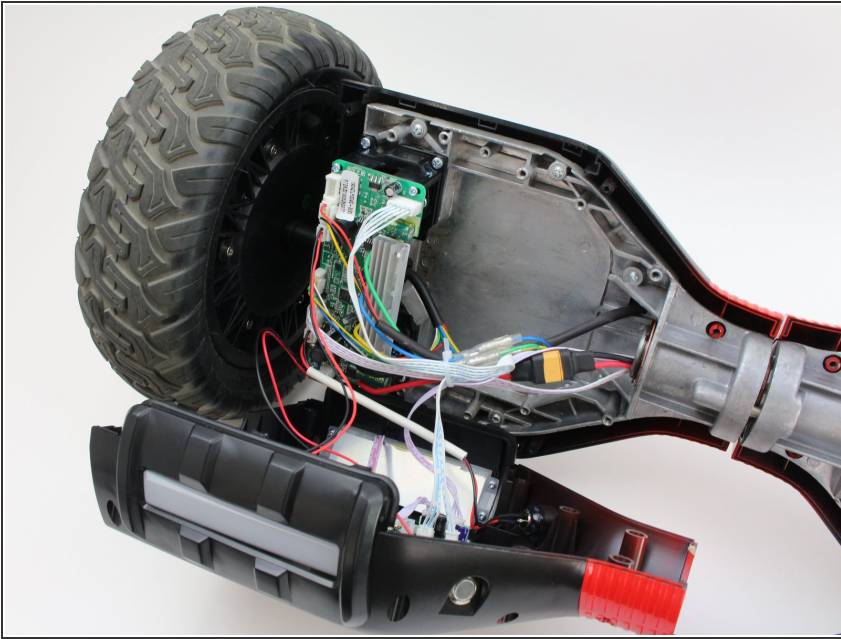
- Pull the right cover away from the hoverboard to expose the battery.

## Step 3



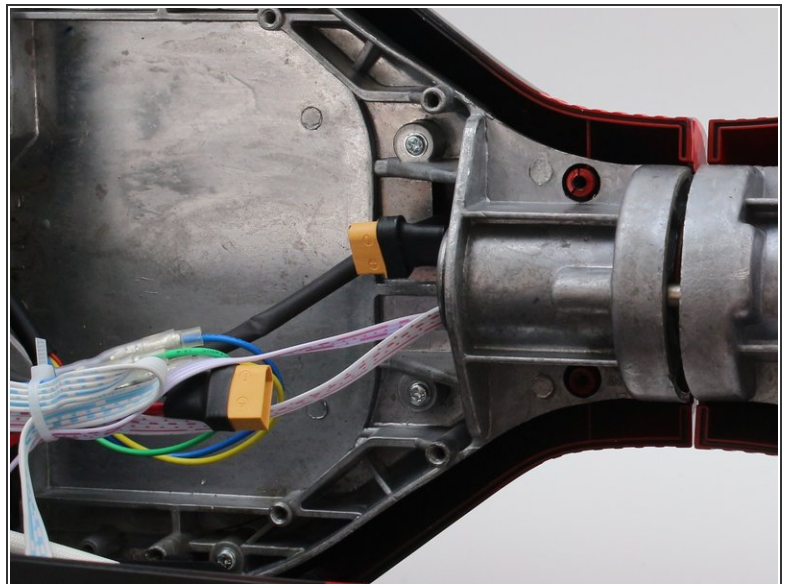
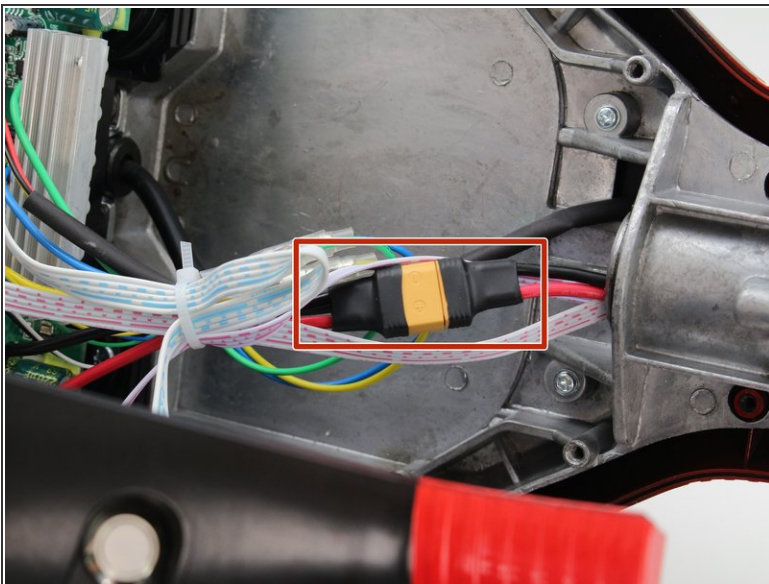
- Disconnect the two pronged black and yellow cable.

## Step 4



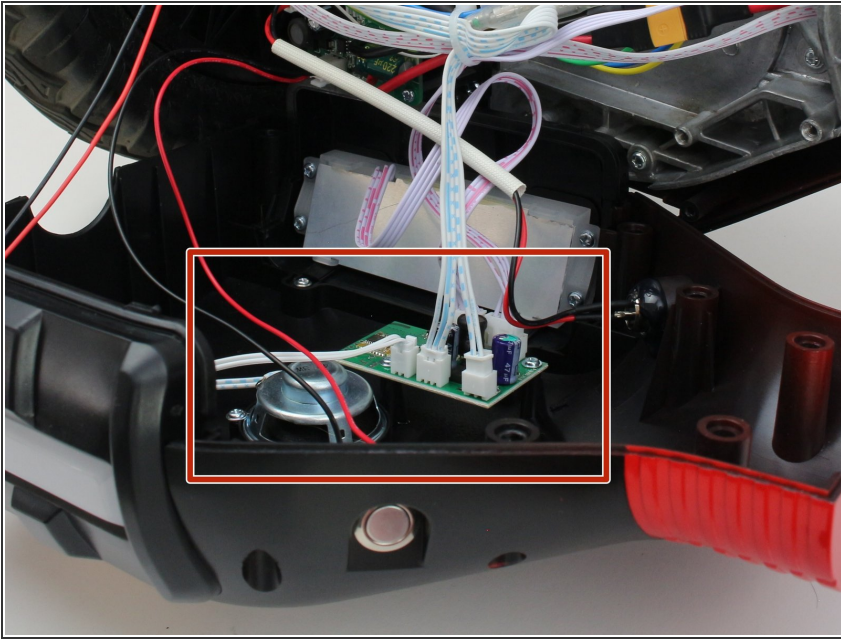
- Pull the left cover away from the hoverboard.

## Step 5



- Disconnect the two pronged black and yellow cable. The battery is now fully disconnected.

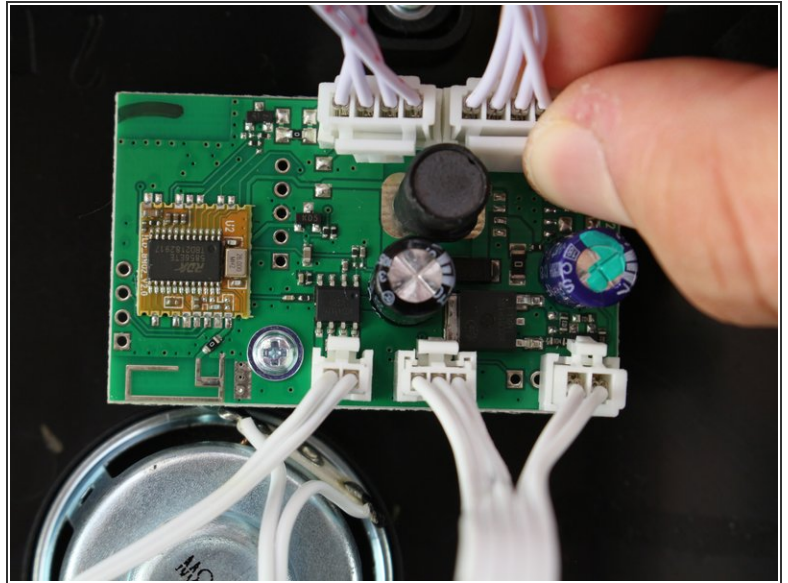
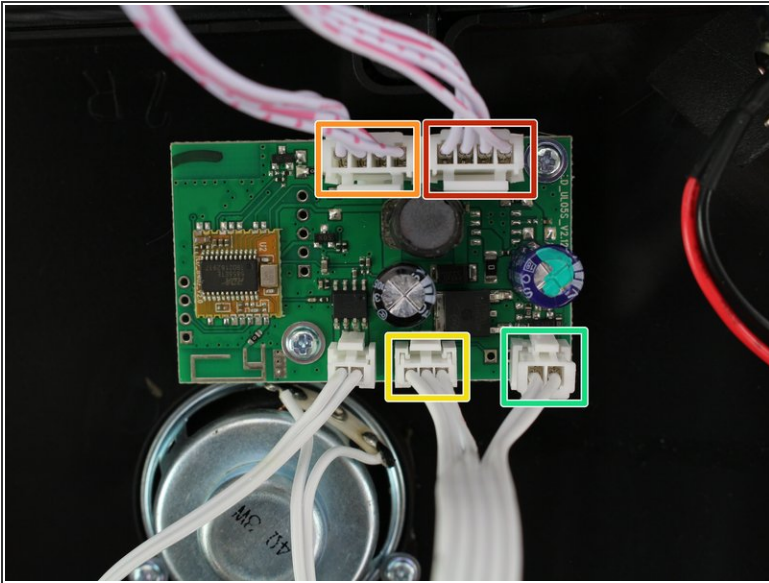
## Step 6 — Bluetooth Speaker



- Locate the speaker attached to the left cover of the hoverboard.

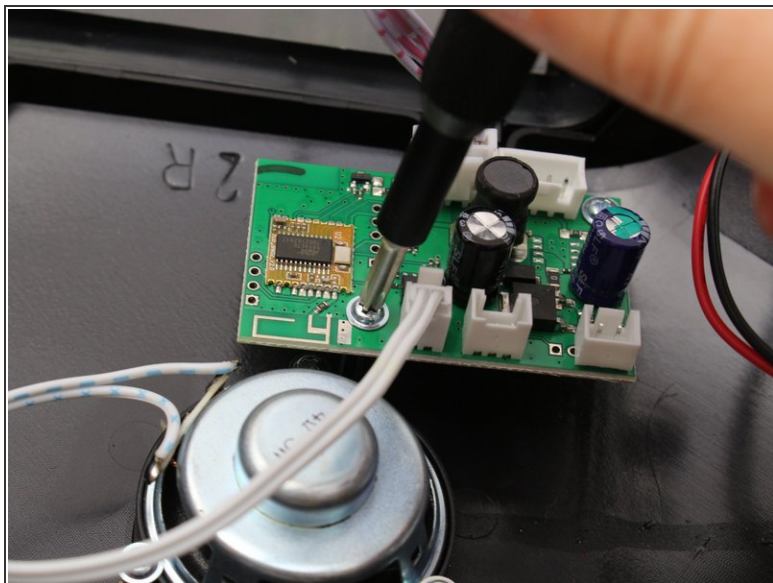
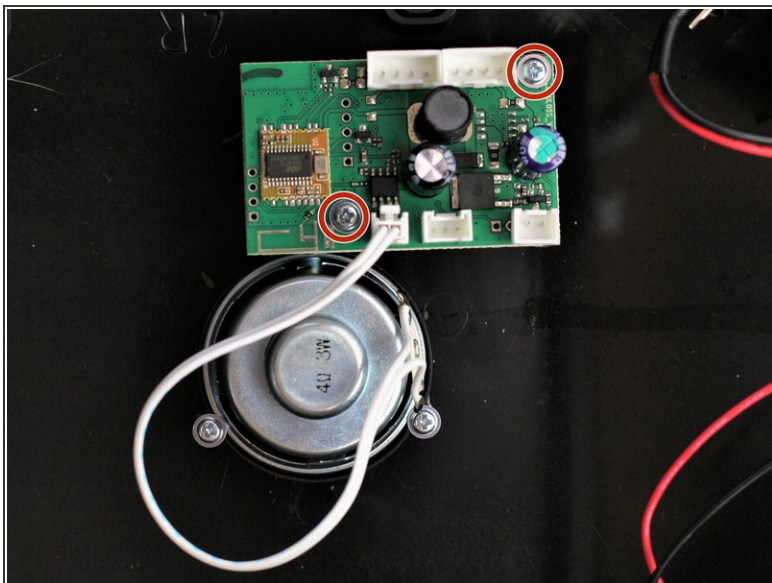


## Step 7



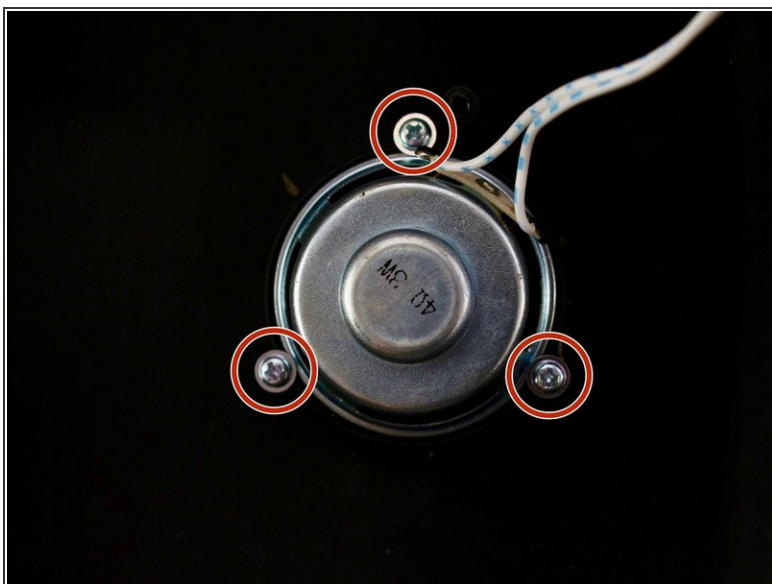
- Unplug the red and white four pin connector from the circuit board. Unplugging this connector is photographed as an example.
- Unplug the red and white four pin connector from the circuit board.
- Unplug the white and blue three pin connector from the circuit board.
- Unplug the white and blue two pin connector from the circuit board.

## Step 8



- Using a Phillips #1 screwdriver, remove the two 7 mm screws from the circuit board.

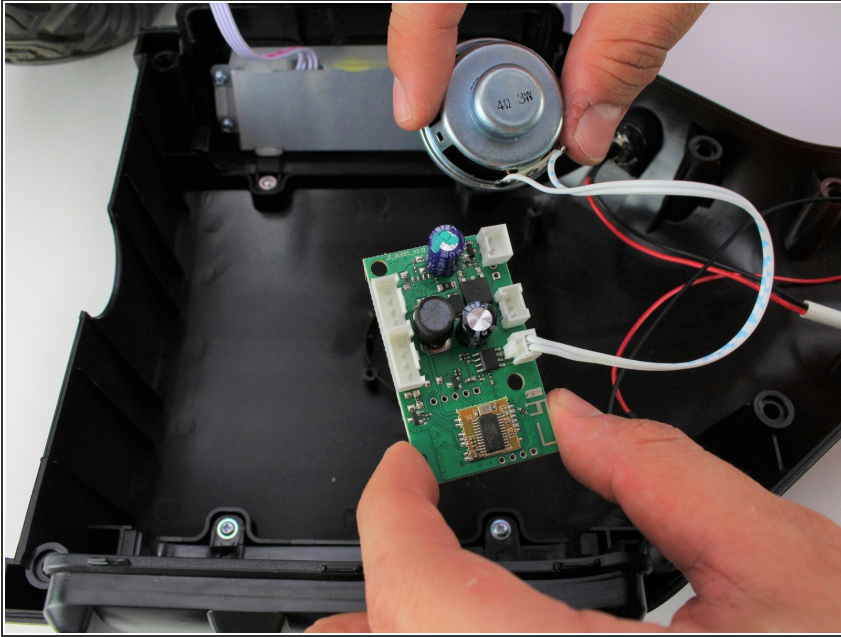
## Step 9



- Using a Phillips #1 screwdriver, remove the three screws securing the speaker to the outer shell.



## Step 10



- Remove the speaker and circuit board from the outer shell.

To reassemble your device, follow these instructions in reverse order.