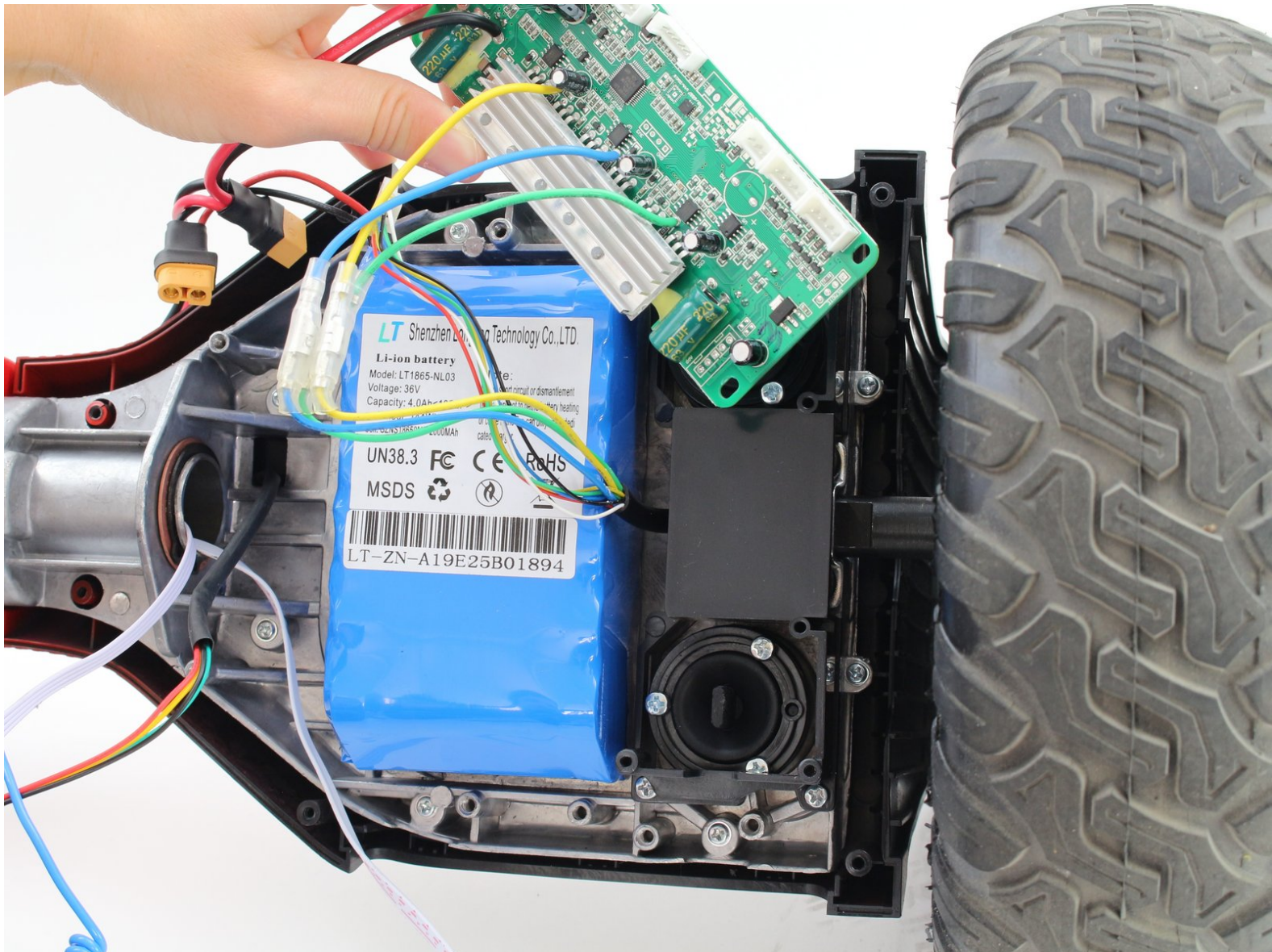




# Hover-1 Charger Gyroscope Sensor Board Replacement

This guide will help you replace the right gyroscope sensor board in your Hover-1 Charger (H1-COL).

Written By: Melanie Hardell



## INTRODUCTION

If you are having trouble balancing on your Hover-1 Charger (H1-COL), there may be an issue with its gyroscope sensor boards. Before you begin disassembling your hoverboard, check out our troubleshooting page addressing [hoverboard balancing](#). If the problem persists, this guide will help you replace your hoverboard's right gyroscope sensor board. Removal of the left gyroscope sensor board will follow very similar steps.

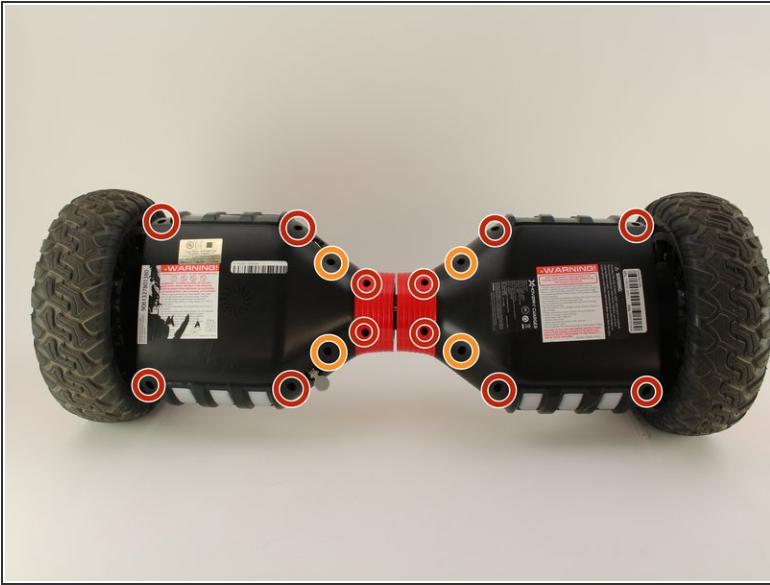
Make sure to wear an anti-static wrist strap to protect the electronics against buildup of static electricity. Some screw housings are fragile; they may fall apart when the screw is removed.

---

### TOOLS:

- [Anti-Static Wrist Strap](#) (1)
  - [Phillips #2 Screwdriver](#) (1)
-

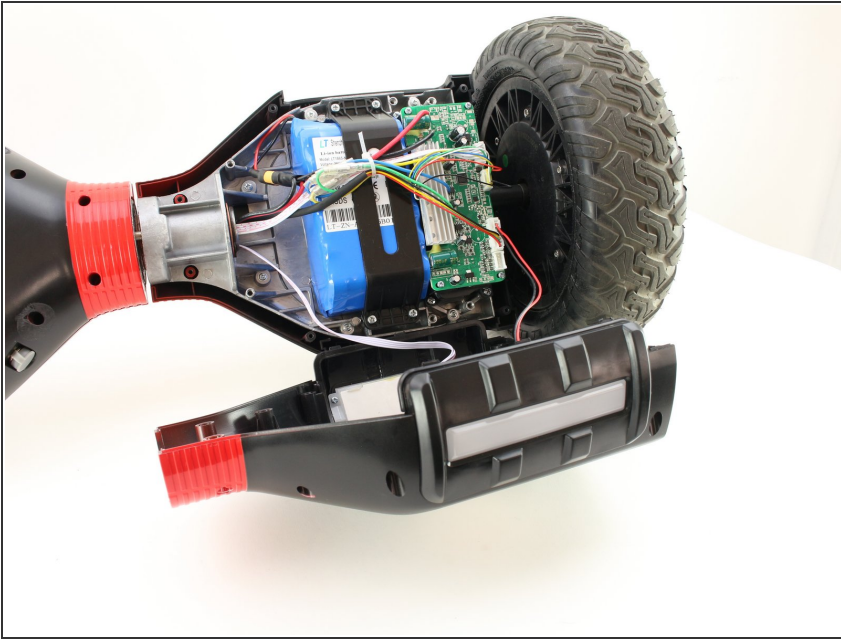
## Step 1 — Unplugging the Battery



- Flip the hoverboard over so that the warning label is facing up.
- Remove the twelve 12 mm screws with a Phillips #2 screwdriver.
- Remove the four 10 mm screws with a Phillips #2 screwdriver.
- ⓘ The screws nearest to the wheels may be hard to access. Be sure to use a long, thin screwdriver.

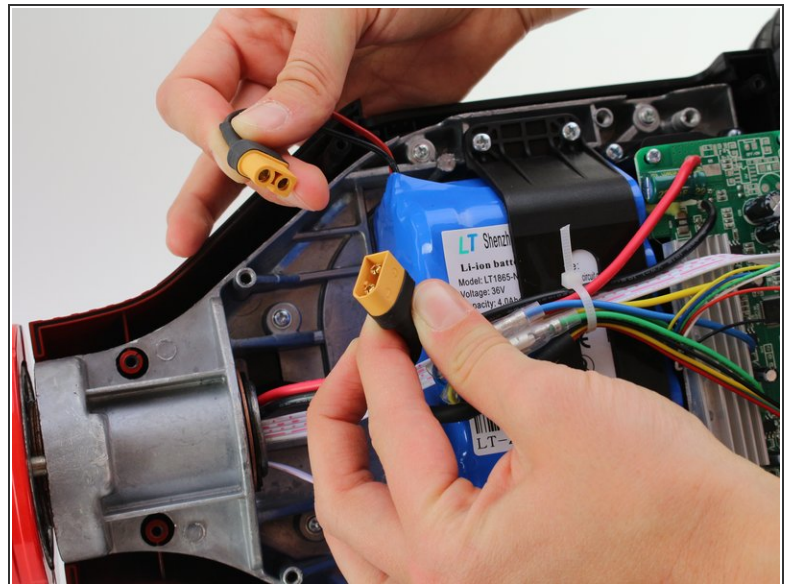
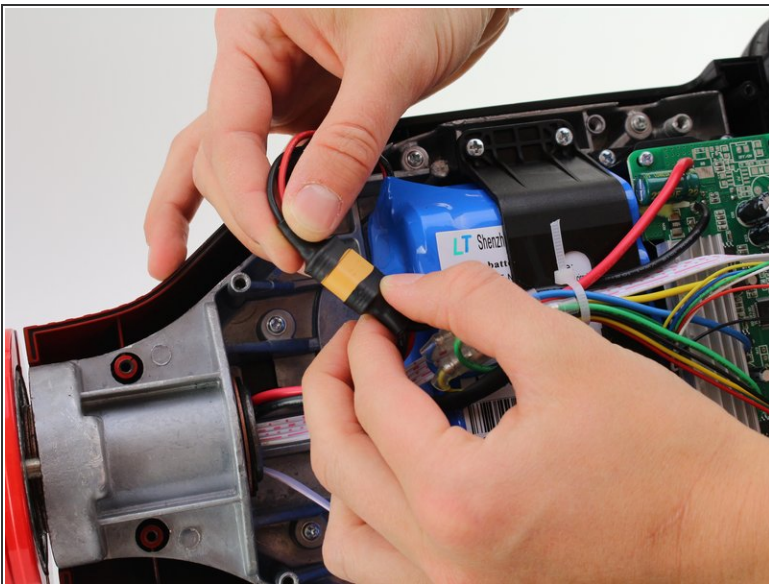


## Step 2



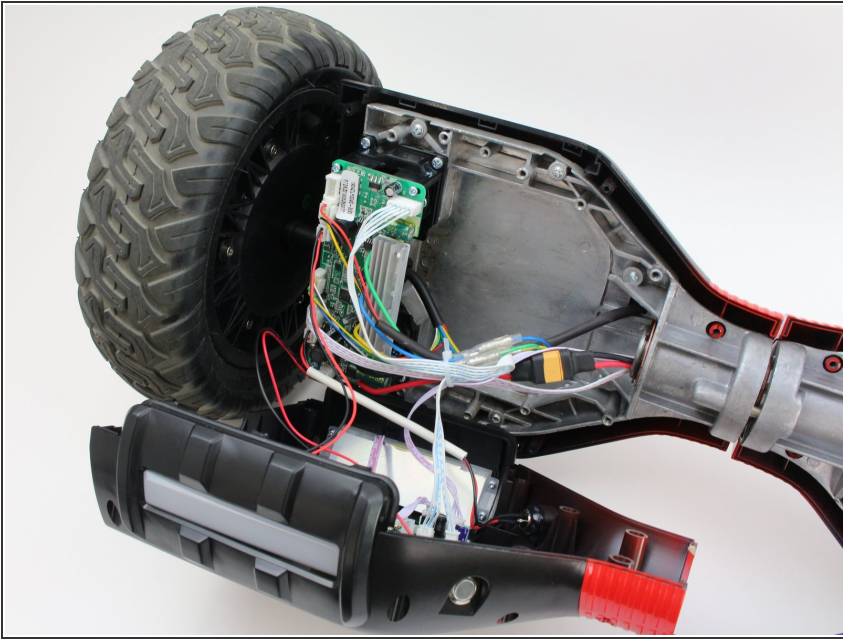
- Pull the right cover away from the hoverboard to expose the battery.

## Step 3



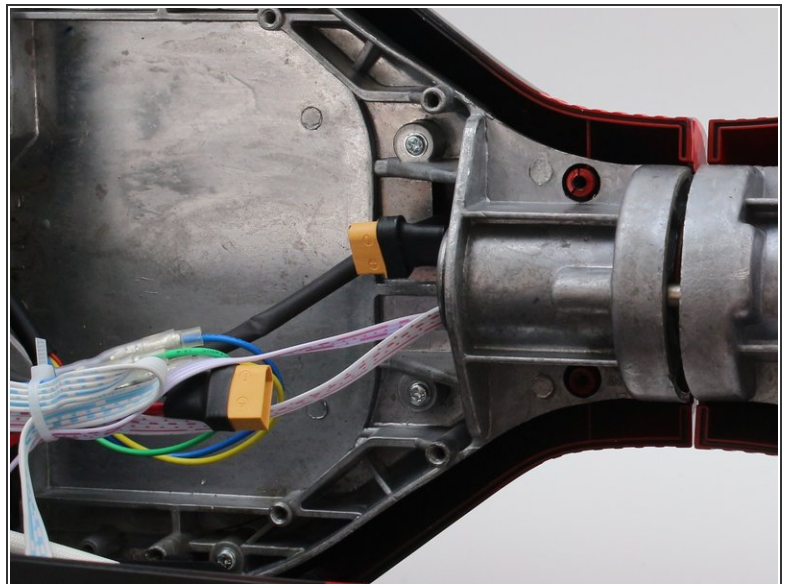
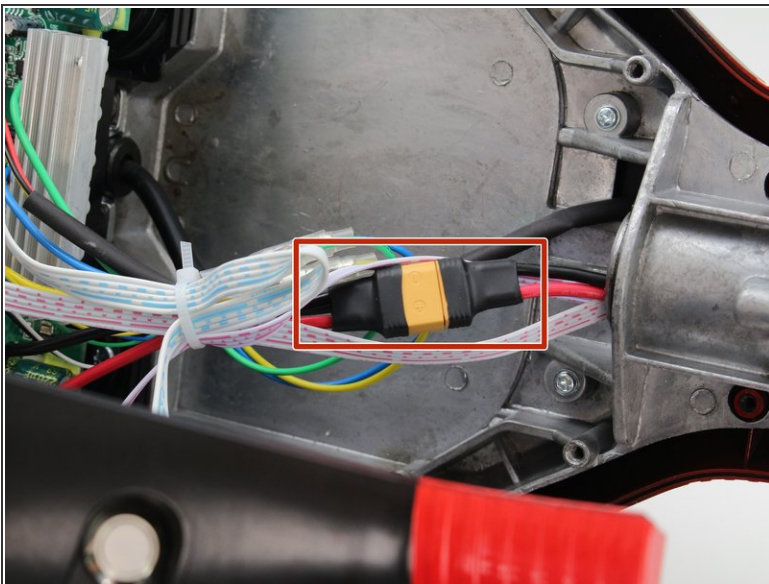
- Disconnect the two pronged black and yellow cable.

## Step 4



- Pull the left cover away from the hoverboard.

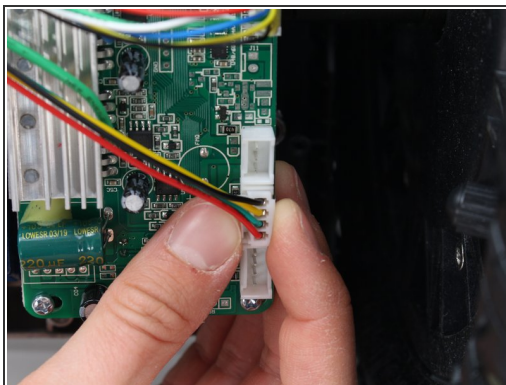
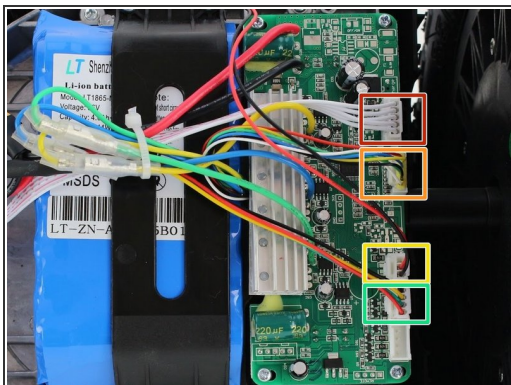
## Step 5



- Disconnect the two pronged black and yellow cable. The battery is now fully disconnected.



## Step 6 — Gyroscope Sensor Board



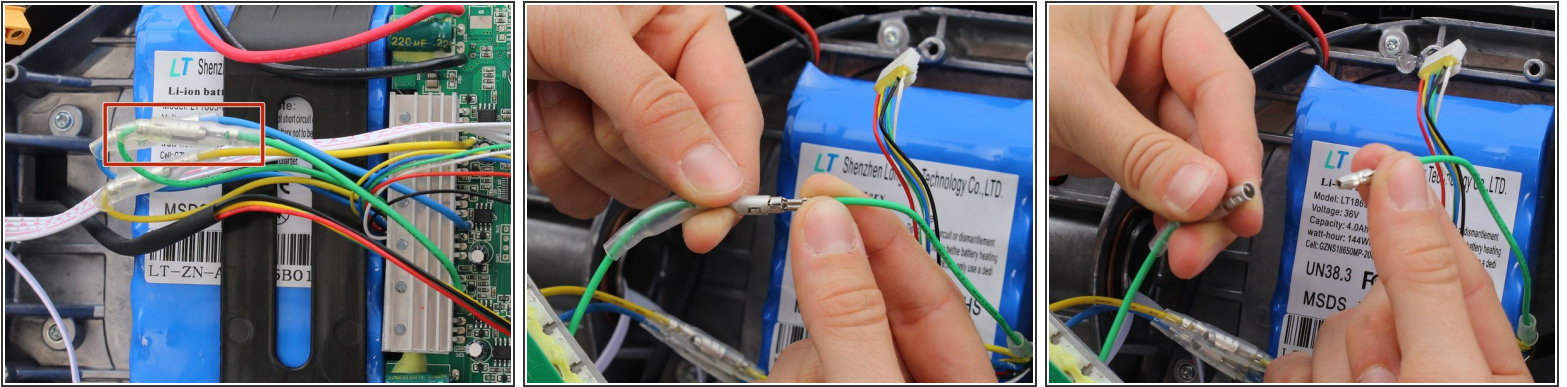
- Unplug the white five pin connector from the gyroscope sensor board.
- Unplug the red, yellow, blue, green, black and white six pin connector.
- Unplug the black and red two pin connector.
- Unplug the black, yellow, green and red four pin connector. Unplugging this connector is photographed as an example.

## Step 7



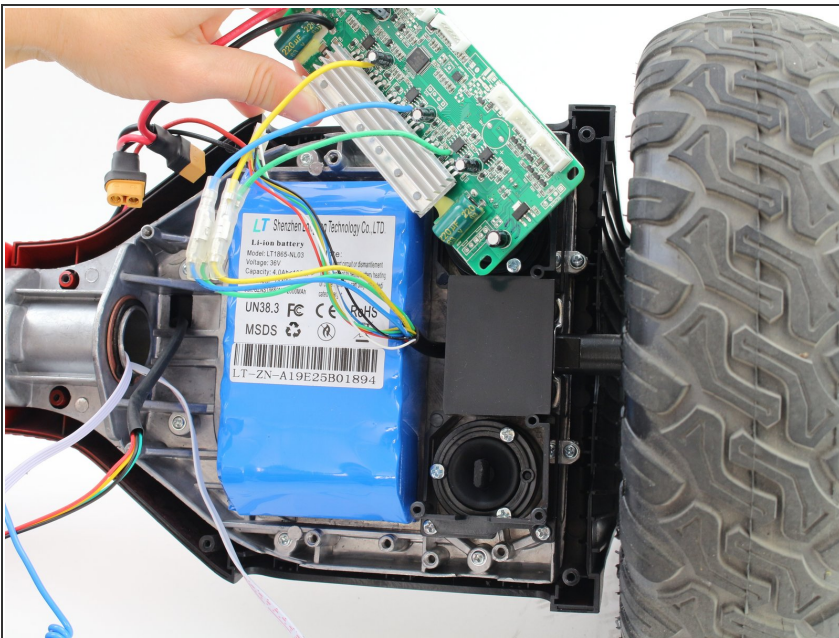
- Remove the four 10 mm screws from the gyroscope sensor board with a Phillips #2 screwdriver.

## Step 8



- Push the rubber sheaths away from the clasp of the green bullet connector.
- Grasp the connector at the metal junction and disconnect.
- Repeat for the yellow and red bullet connectors.
- i* There may be a zip tie holding these wires together. Cut this off.
- i* These bullet connectors may be hard to disconnect; do not be afraid to pull with strong force.

## Step 9



- Remove the gyroscope sensor board.

To reassemble your device, follow these instructions in reverse order.