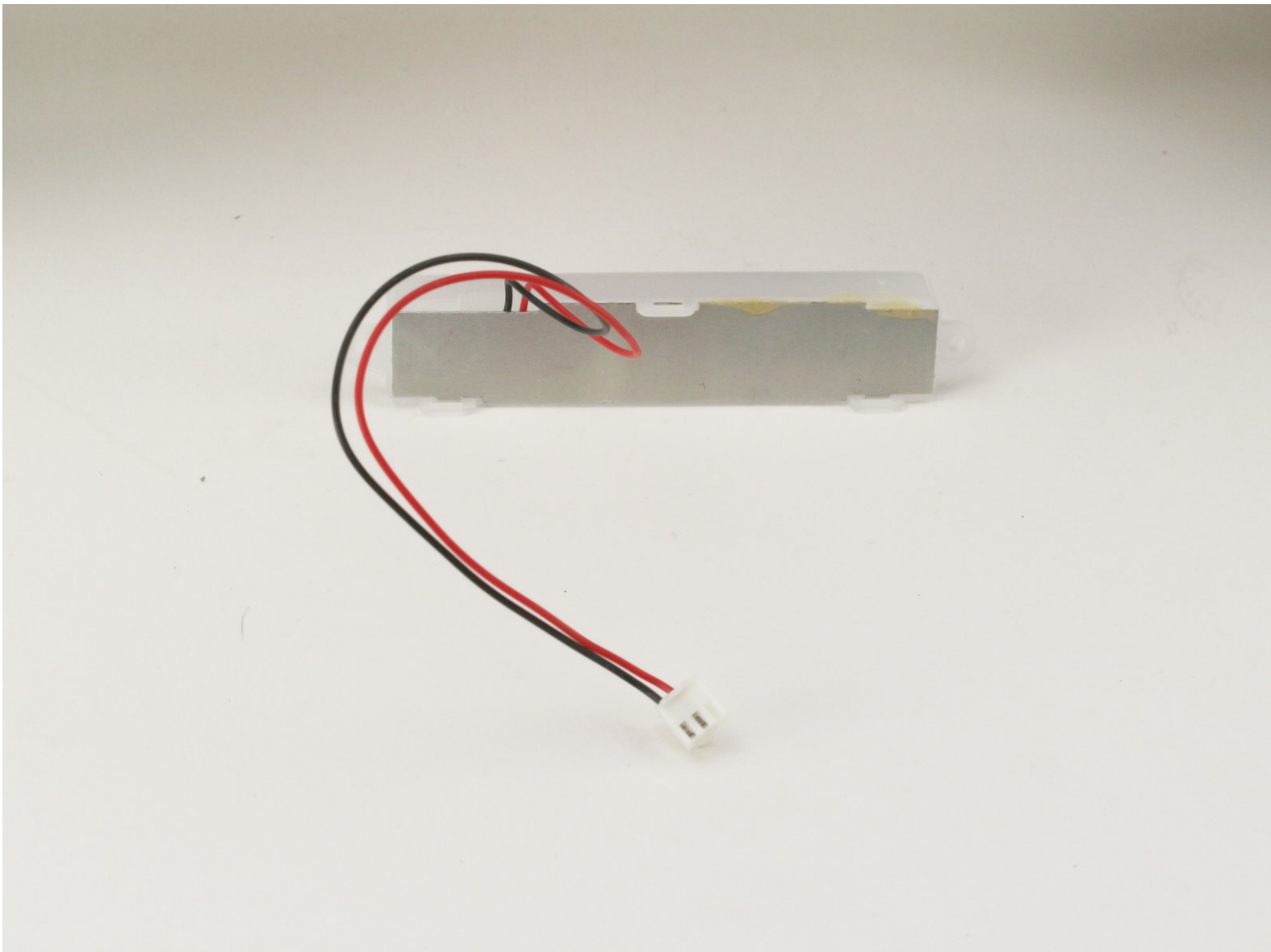




Hover-1 Charger LED Headlight Replacement

This guide will help you replace the LED headlights in your Hover-1 Charger (H1-COL).

Written By: Benji Forest



INTRODUCTION

If the LED headlights on your Hover-1 Charger (H1-COL) are not turning on, you may have to replace them. Before you begin disassembling your hoverboard, check out our troubleshooting page that addresses [LED headlights](#). If the problem persists, this guide will help you replace your hoverboard's right LED headlight. Removal of the left headlight will follow very similar steps.

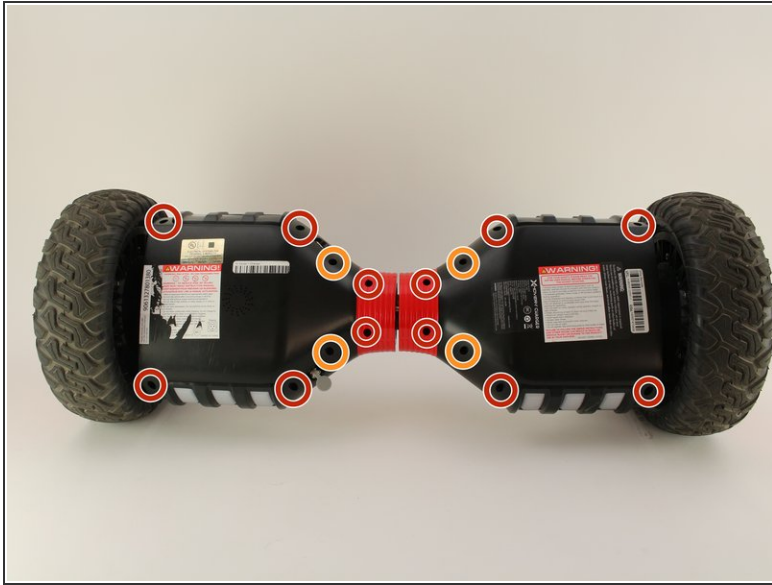
Make sure to wear an anti-static wrist strap to protect the electronics against buildup of static electricity. Some screw housings are fragile; they may fall apart when the screw is removed.



TOOLS:

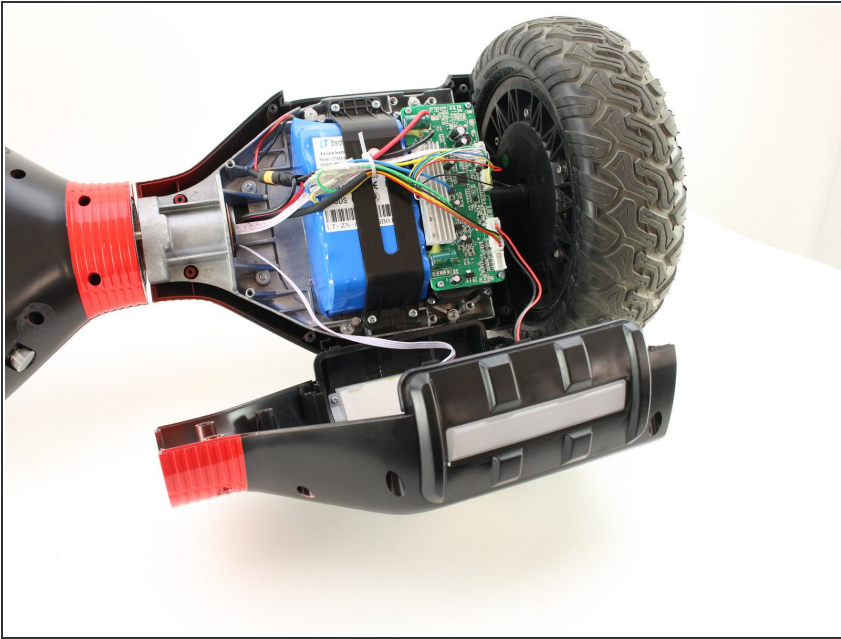
- [Anti-Static Wrist Strap](#) (1)
- [Phillips #2 Screwdriver](#) (1)

Step 1 — Unplugging the Battery



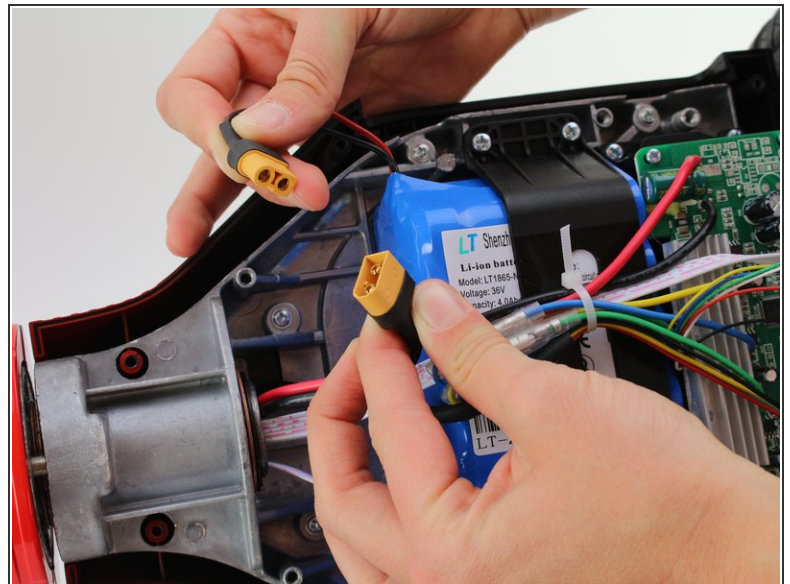
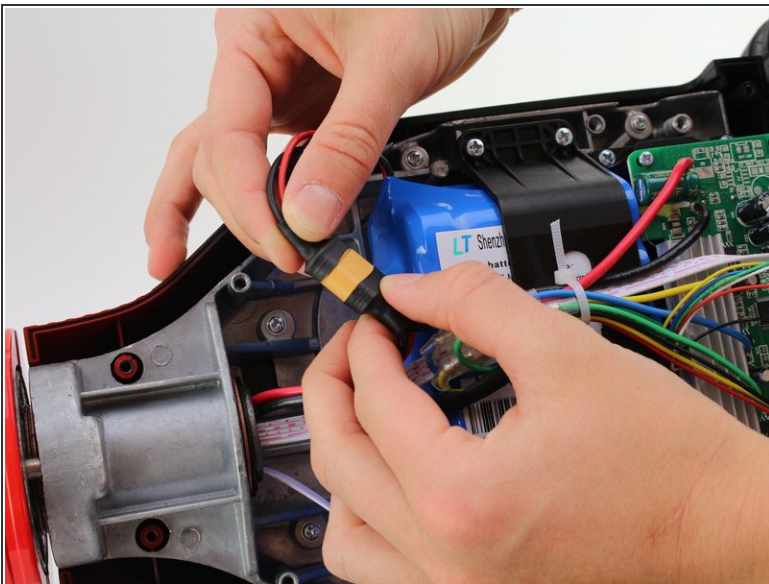
- Flip the hoverboard over so that the warning label is facing up.
- Remove the twelve 12 mm screws with a Phillips #2 screwdriver.
- Remove the four 10 mm screws with a Phillips #2 screwdriver.
- ⓘ The screws nearest to the wheels may be hard to access. Be sure to use a long, thin screwdriver.

Step 2



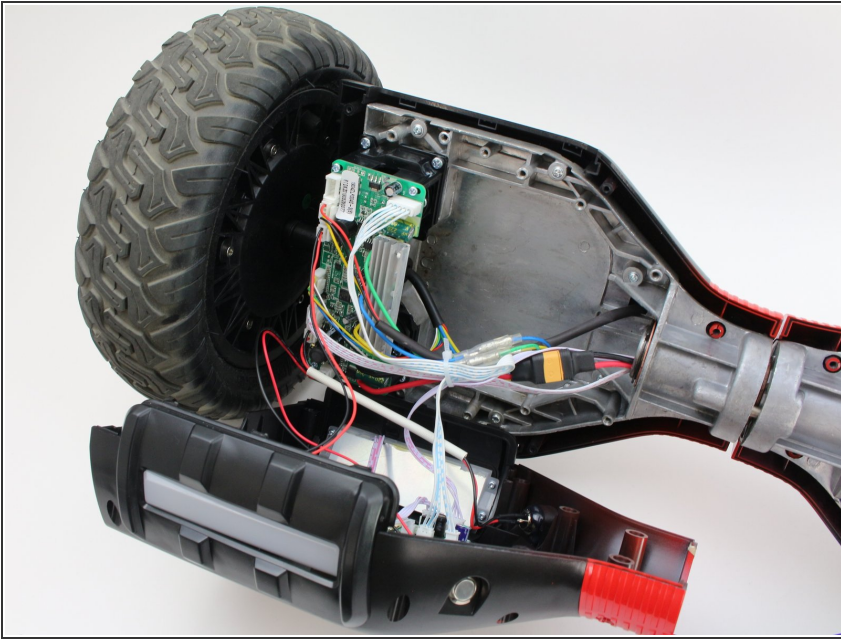
- Pull the right cover away from the hoverboard to expose the battery.

Step 3



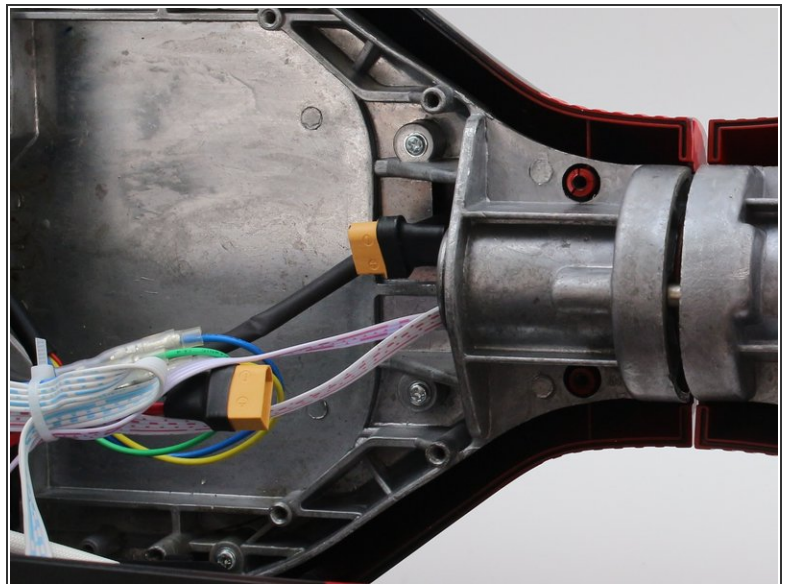
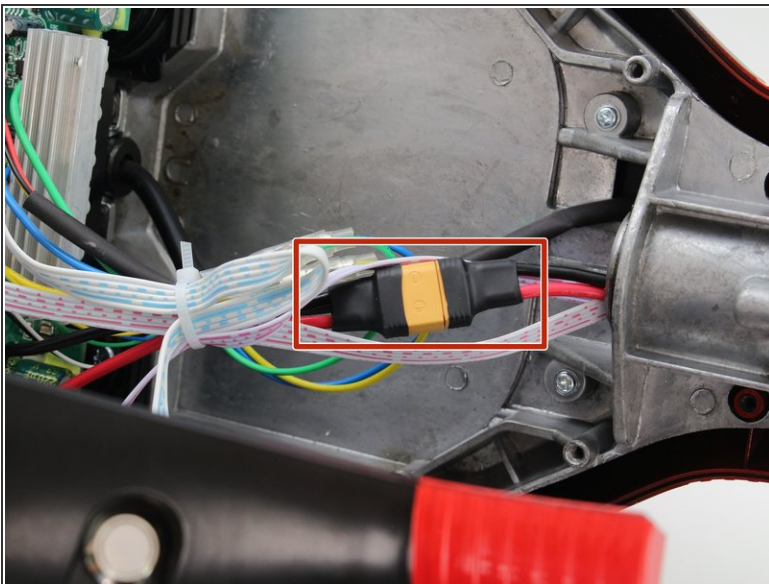
- Disconnect the two pronged black and yellow cable.

Step 4



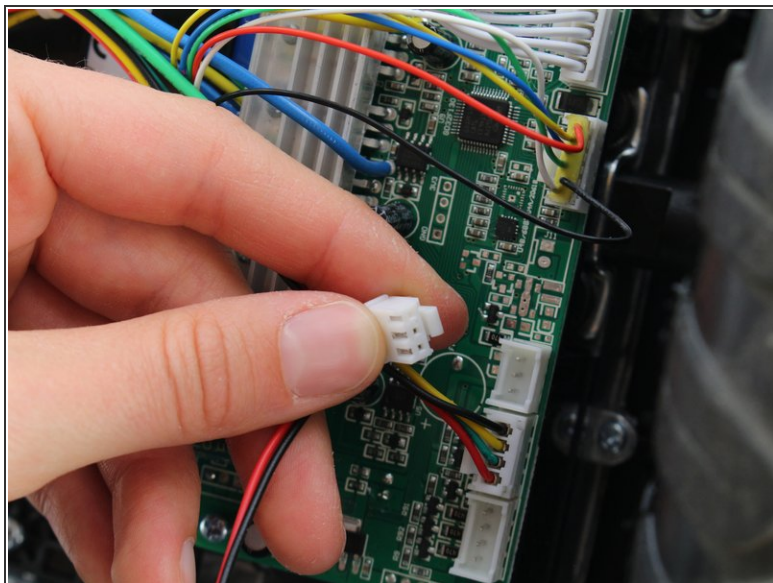
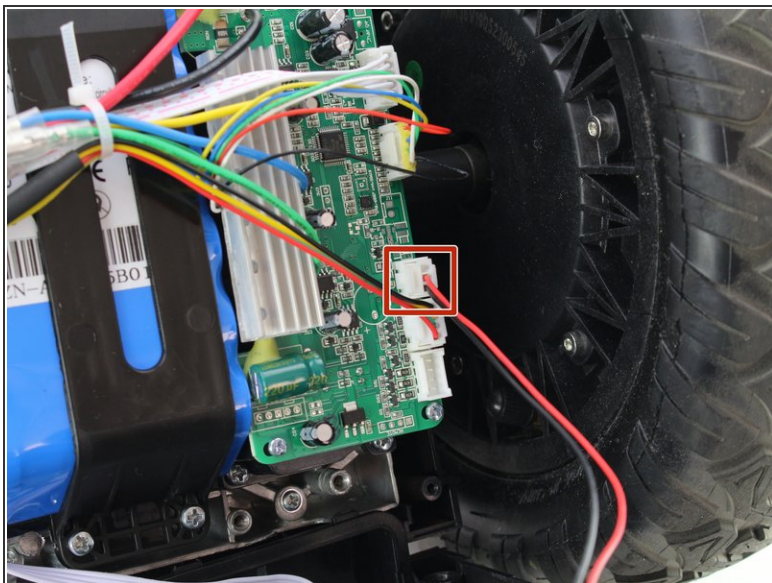
- Pull the left cover away from the hoverboard.

Step 5



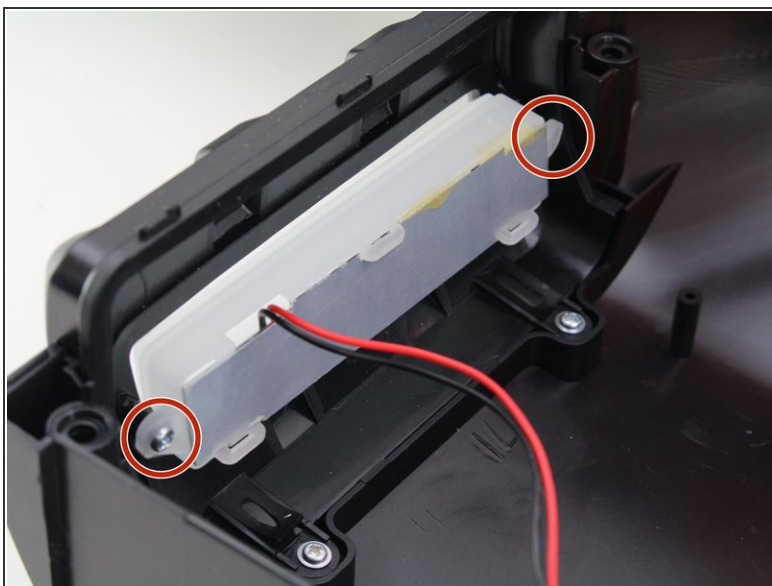
- Disconnect the two pronged black and yellow cable. The battery is now fully disconnected.

Step 6 — LED Headlight



- Remove the black and red two pin connector from the circuitboard.

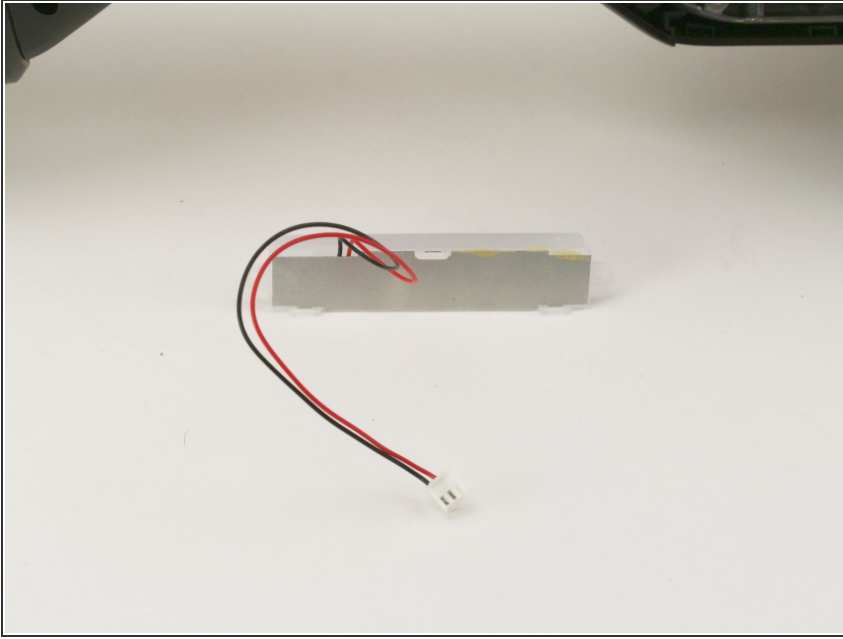
Step 7



- Remove the two 12mm screws holding the LED to the front cover with a Phillips #2 screwdriver.

i Our Hoverboard was missing a screw in the LED housing. Yours may or may not be missing screws as well.

Step 8



- With the wire unplugged and screws removed, you can now safely separate the LED from the Hoverboard.

To reassemble your device, follow these instructions in reverse order.