



# Hover-1 Chrome Bluetooth Speaker Replacement

If your Hover-1 fails to play music, use this guide to replace the internal Bluetooth speaker.

Written By: Nick McGuire



---

## INTRODUCTION

The Bluetooth speaker connects to your device to play music while you ride the Hover-1. You will need a Phillips #2 screwdriver to replace the Bluetooth speaker.



### TOOLS:

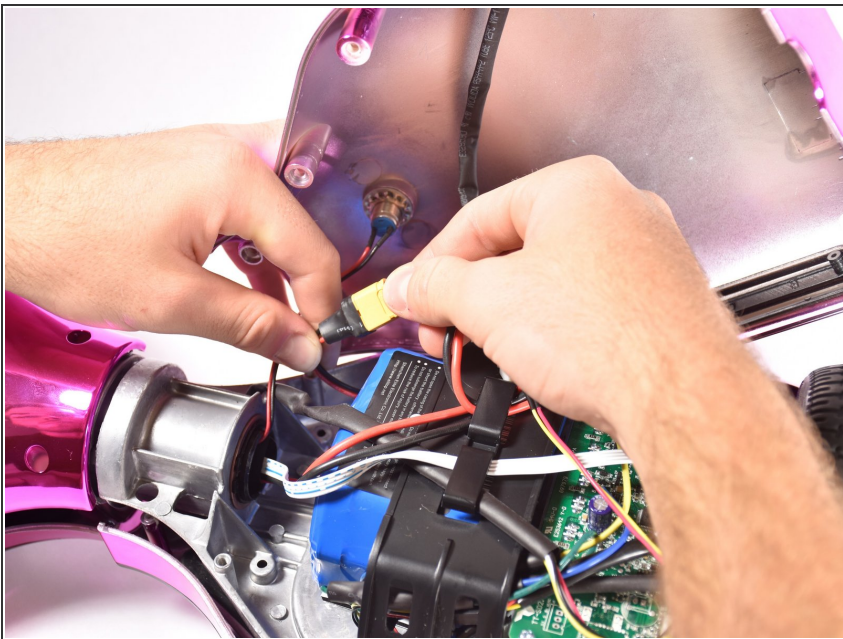
- [Phillips #2 Screwdriver](#) (1)
-

## Step 1 — Bluetooth Speaker



- Flip the Hover-1 Chrome upside down.
- Use a Phillips #2 screwdriver to remove the fourteen 14 mm screws from the bottom of the Hover-1.
- Break the two black tape circles, and remove the two 15 mm Phillips screws underneath.

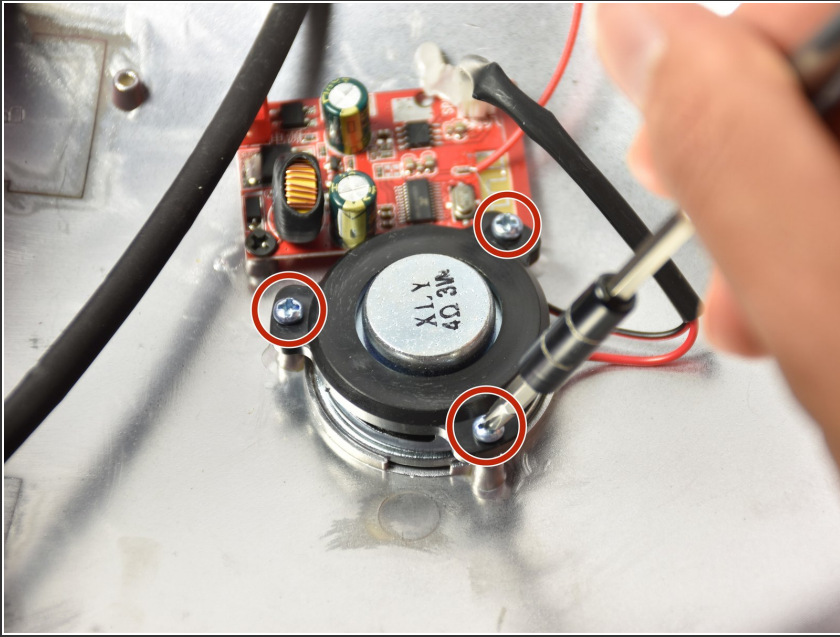
## Step 2



- Lift the shell without the speaker grille and unplug the battery.

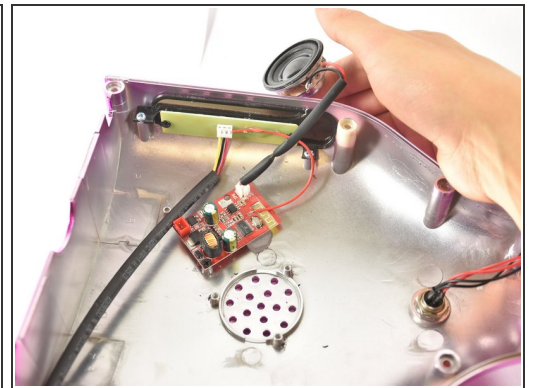
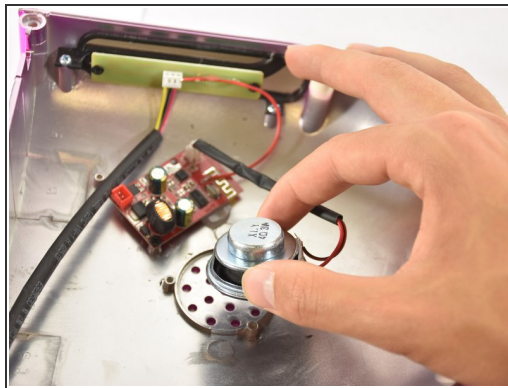
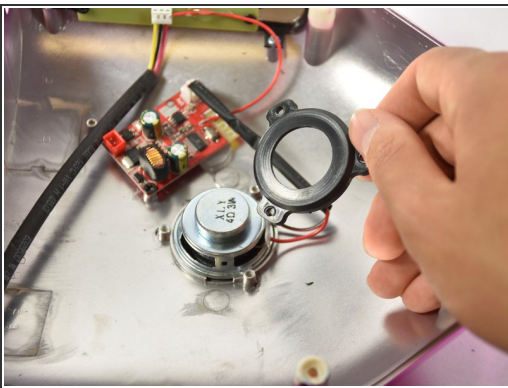


### Step 3



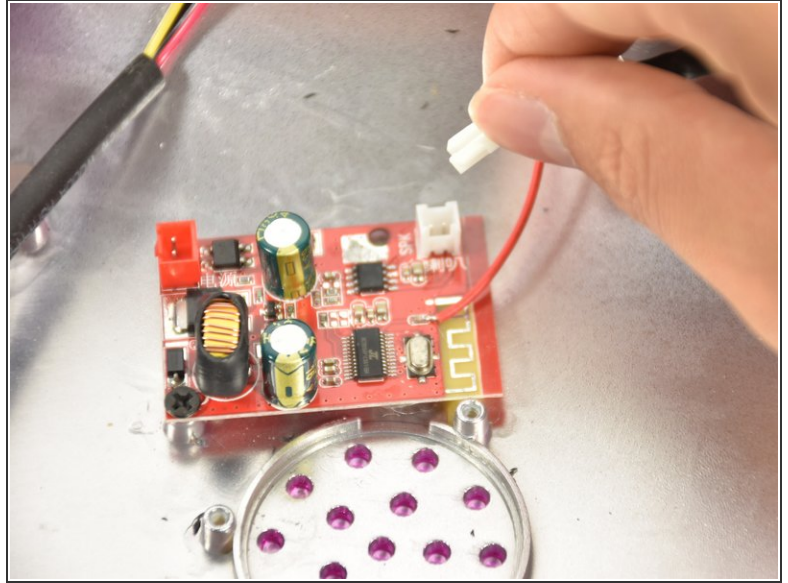
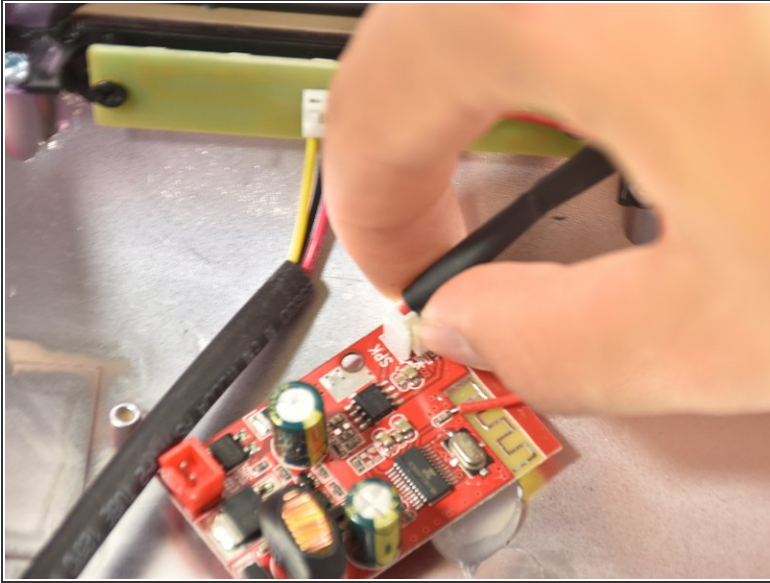
- Lift the shell with the speaker grille so the speaker can be accessed.
- Remove the three 14 mm Phillips #2 screws holding the speaker to the bottom left shell.

### Step 4



- Pull off the bracket holding the speaker in place.
- Place the speaker to the side so that the tab on the cable connector to the sound card can be accessed.

## Step 5



- Disconnect the cable attaching the speaker to the sound card.

To reassemble your device, follow these instructions in reverse order.