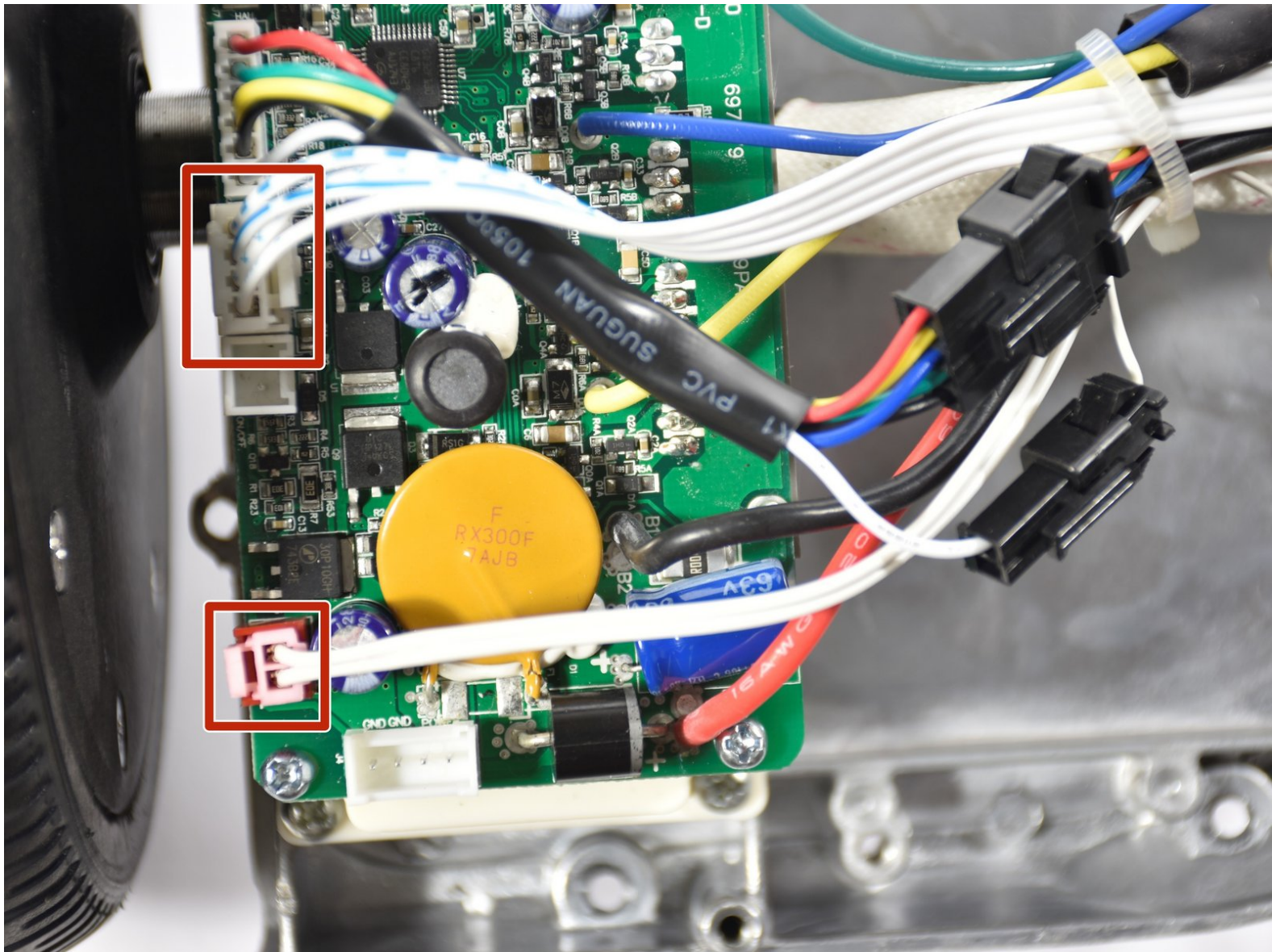




# Hover-1 Chrome Left Gyroscope Sensor Board Replacement

Replace the left gyroscope sensor board to fix technical malfunctions you may experience in the Hover-1.

Written By: Nick McGuire



This document was generated on 2019-09-22 07:02:54 PM (MST).

---

# INTRODUCTION

You will need a Phillips #2 screwdriver and a soldering iron.



## TOOLS:

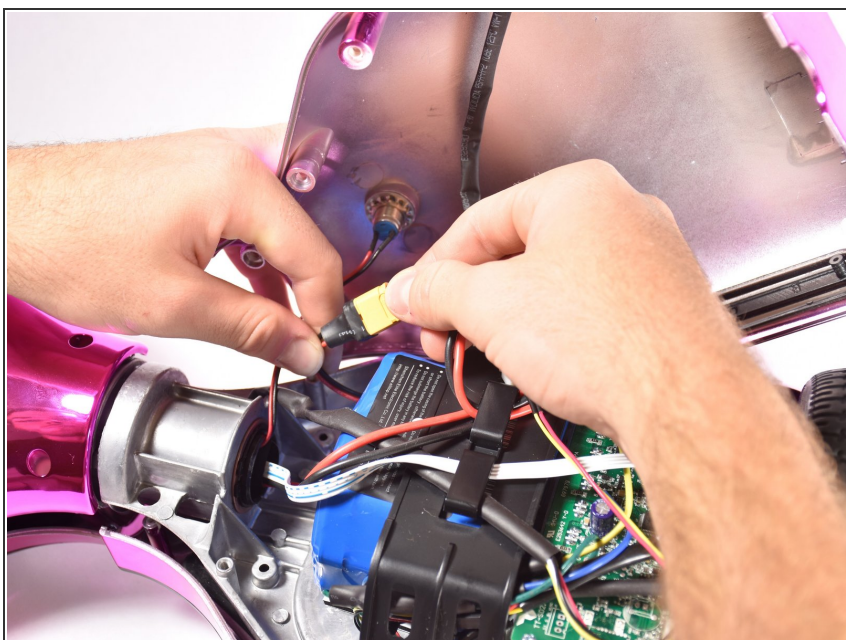
- [Phillips #2 Screwdriver](#) (1)
  - [Portable Soldering Iron](#) (1)
-

## Step 1 — Hover-1 Chrome Disassembly



- Flip the Hover-1 Chrome upside down.
- Use a Phillips #2 screwdriver to remove the fourteen 14 mm screws from the bottom of the Hover-1.
- Break the two black tape circles, and remove the two 15 mm Phillips screws underneath.

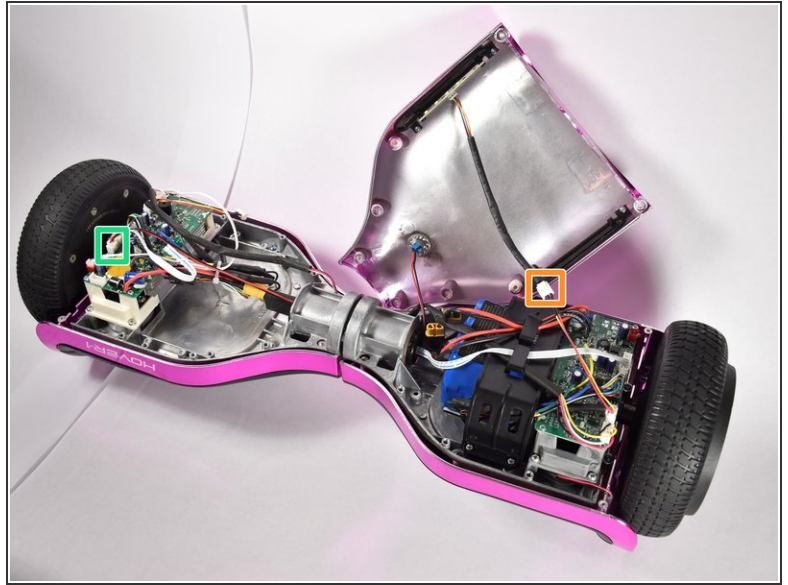
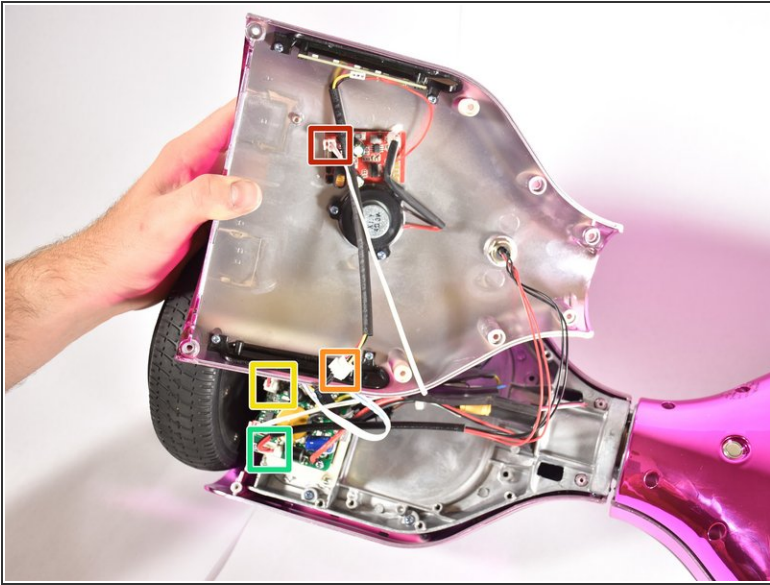
## Step 2



- Lift the shell without the speaker grille and unplug the battery.

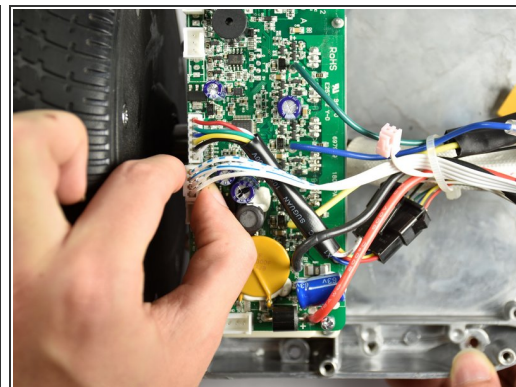
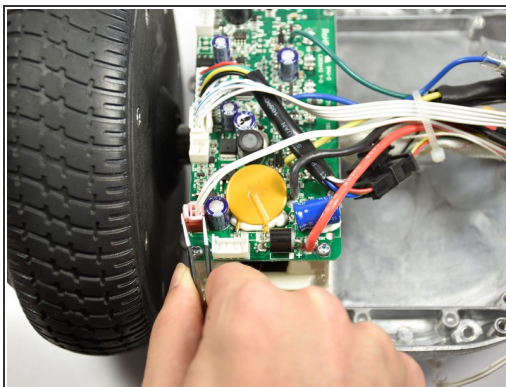
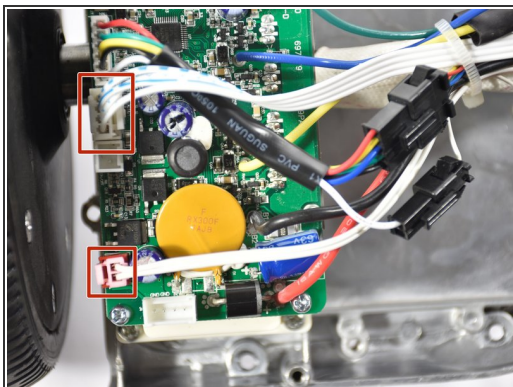


## Step 3



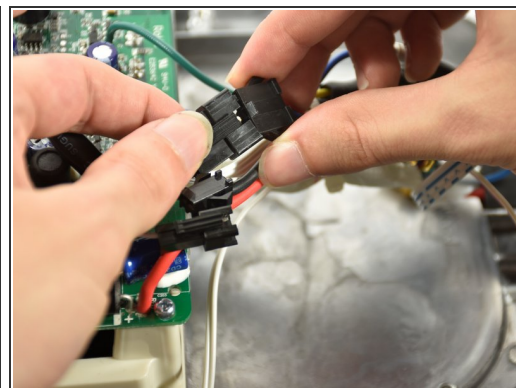
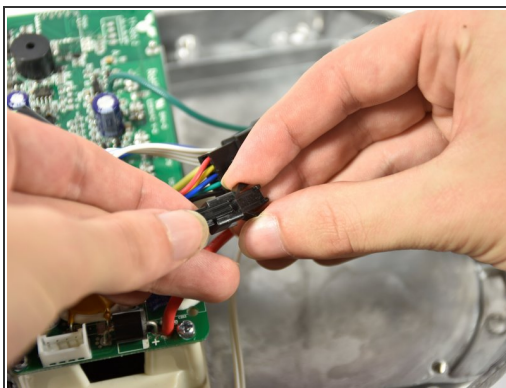
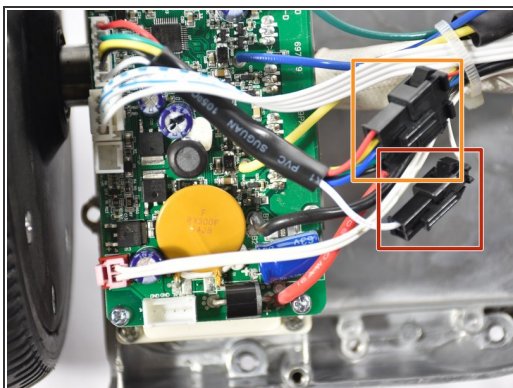
- Lift the shell with the speaker grille.
- Unplug the speaker.
- Unplug the LEDs.
- Unplug the power button
- Unplug the charging port.

## Step 4 — Left Gyroscope Sensor Board



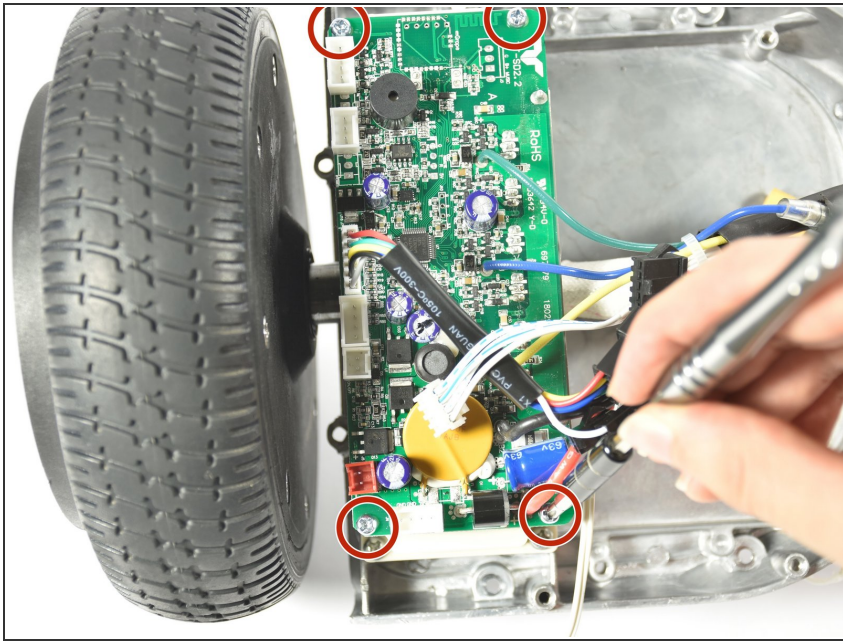
- Disconnect the speaker cable.
- Disconnect the cable that travels to the other sensor board.

## Step 5



- Disconnect the smaller connector midway on the cable.
- Disconnect the larger connector midway on the cable.

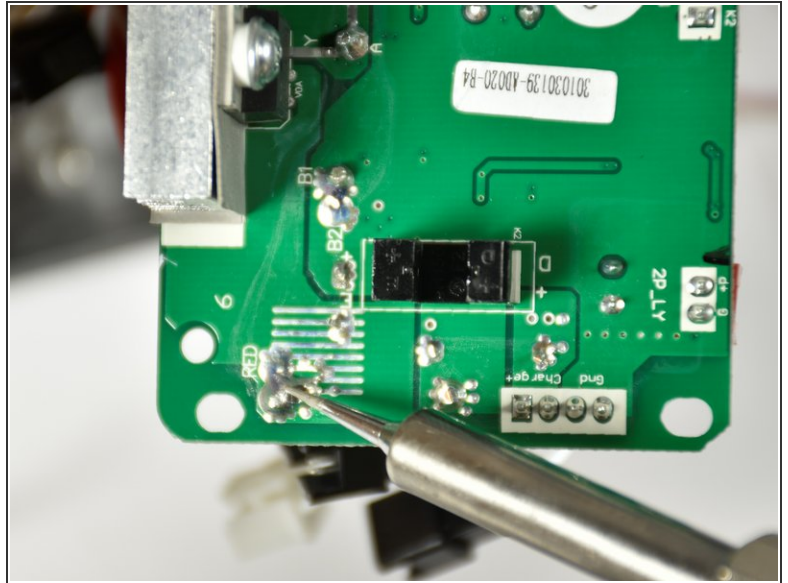
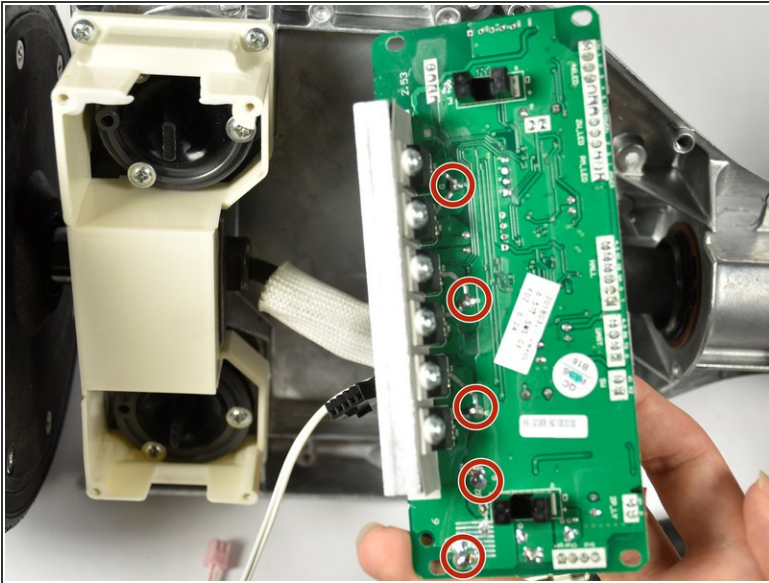
## Step 6



- Remove the four 12mm Phillips #2 screws securing the sensor board.



## Step 7



- Locate the five solder locations on the underside of the gyroscope sensor board.
  - Plug in soldering iron and wait for the tip to reach its target temperature.
  - Rest the tip of the iron on the solder and wait for the solder to melt. The wire will drop out of the sensor board.
- ⚠ Be aware of where the tip of the soldering iron is at ALL times. Put on safety glasses before picking up the soldering iron. Turn on a fan and face it towards the device to vent harmful fumes away from the solderers face.

To reassemble your device, follow these instructions in reverse order.