



Hover-1 Coast Controller Battery Replacement

In this guide you will remove and replace the battery in the Hover-1 Coast controller.

Written By: Jace Oppenlander



INTRODUCTION

In order for your Hover-1 Coast to be used, you must have a functioning controller. It is essential to have a fully functioning controller for the Hover-1 Coast to be used to its full potential. This guide is not too difficult and can be done by anyone.



TOOLS:

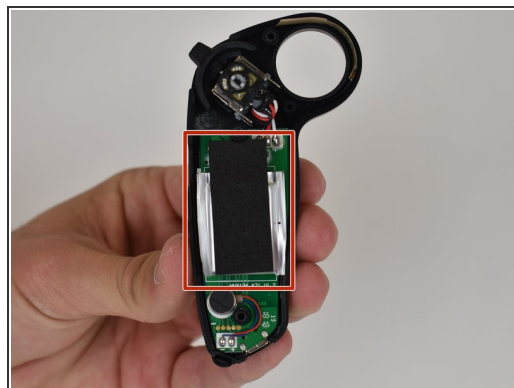
- [Phillips #1 Screwdriver](#) (1)
 - [Soldering Iron](#) (1)
 - [ESD-safe pry tool](#) (1)
-

Step 1 — Controller Battery



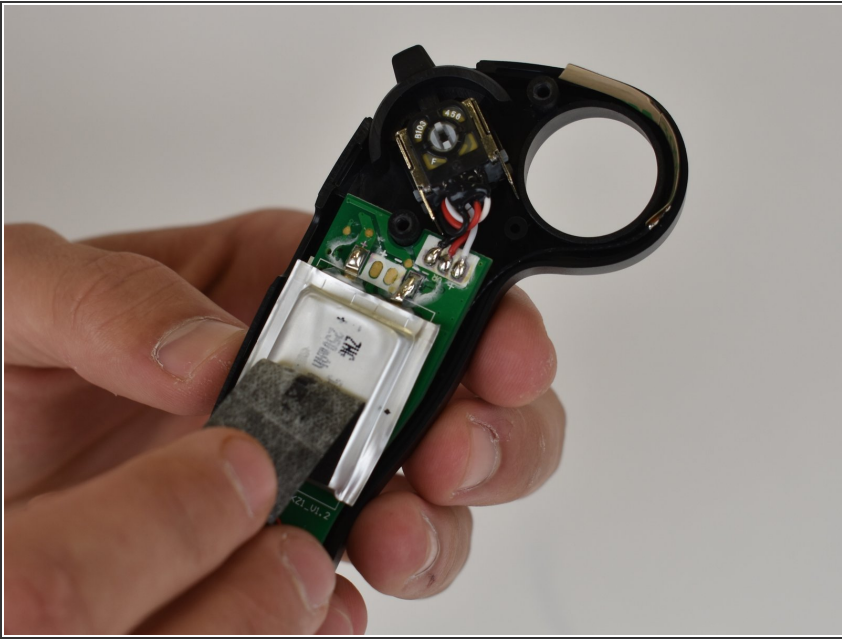
- Identify the three screws and using a Phillips #1 screwdriver loosen the the screws.
- Remove the three screws.

Step 2



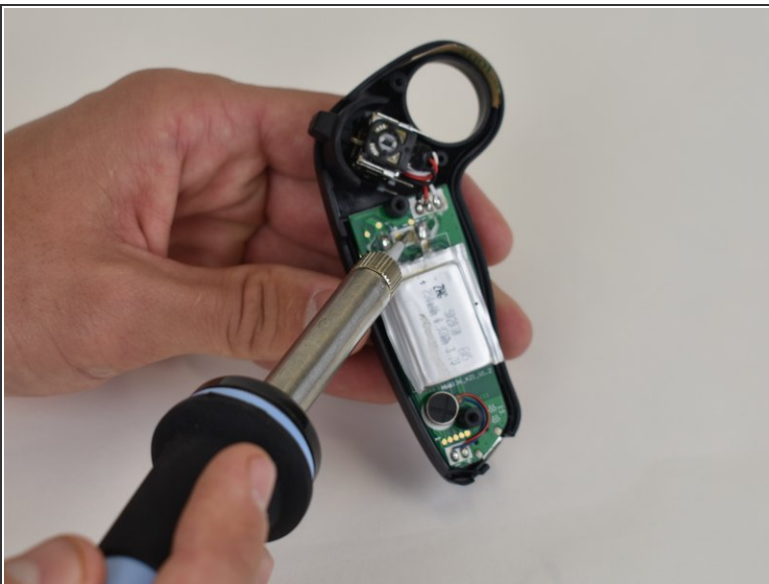
- Pull the backside of the controller off.
- The inside of the controller should look like this.
- The marked area is the battery.

Step 3



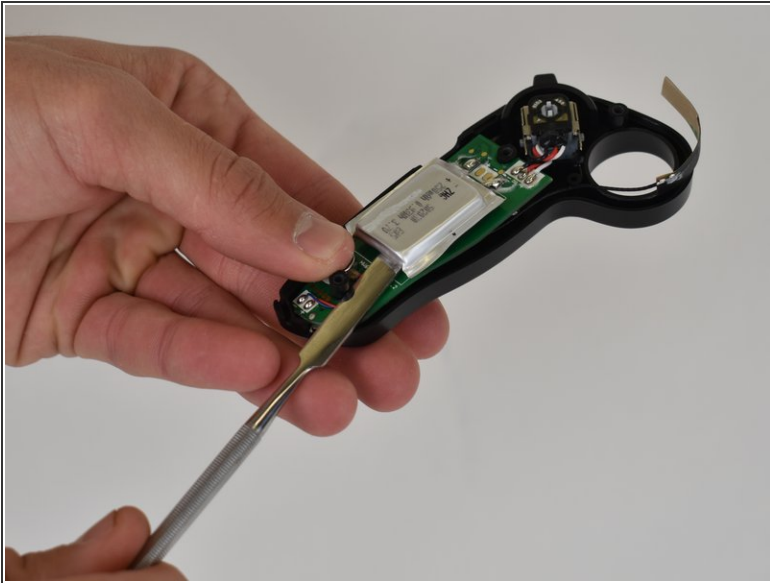
- Remove the black foam piece covering the battery.

Step 4



- [Desolder](#) the battery connections from the motherboard.

Step 5



- Using a plastic opening tool, pry the battery off the motherboard.
- The inside of the controller should look like this.

To reassemble your device, follow these instructions in reverse order.