



Hover-1 Folding E-Scooter Brake Pad Replacement

This guide will show you how to replace the brake pad on a Hover-1 Folding E-Scooter.

Written By: Meagan Chan



INTRODUCTION

Are you riding with risk because your brake no longer slows down your scooter? Learn how to replace your brake pad to make your scooter safe to ride again.

TOOLS:

- [4mm Hex Key](#) (1)
 - [4 mm Bit Extension](#) (1)
 - [Phillips #2 Screwdriver](#) (1)
-

Step 1 — Rear Wheel



- Remove either of the two 0.2 mm axle screws by using a hex bit 4.0 by turning clockwise.
- i The two screws are the same thread so find the screw that has the least torque. Only that screw will be able to be removed in this step.
- ⚙ Turn the hex bit 4.0 counterclockwise to reassemble the axle screws.

Step 2



- Slide off the plastic side panel.

Step 3



- Use a hex bit 4.0 to screw back in the 0.2 mm screw as tightly as possible by turning clockwise.
- ⓘ You will need to hold the other screw you are not replacing with an additional hex bit 4.0, so that the screws don't spin freely.

Step 4



- Flip over the scooter and use the hex bit 4.0 to remove the other 0.2 mm screw.

Step 5



- Slide off the other plastic side panel.

Step 6



- On the same side you removed the screw, use the bit extender to push down on the axle inside the wheel.
- ⓘ The axle pops out and the wheel easily comes off.
- ⓘ Two washers will pop out with the axle.

Step 7 — Brake Pad

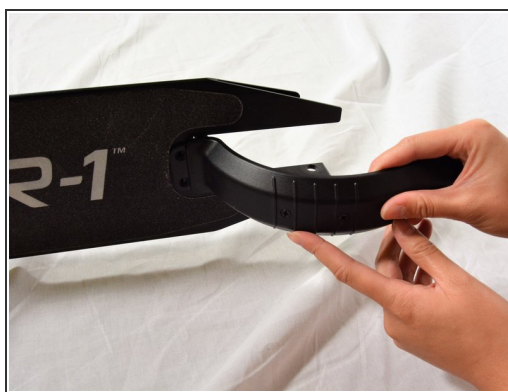


- Remove the two 25mm screws by twisting a Phillips #2 screwdriver counterclockwise.

✦ Twist the screwdriver clockwise to reassemble.

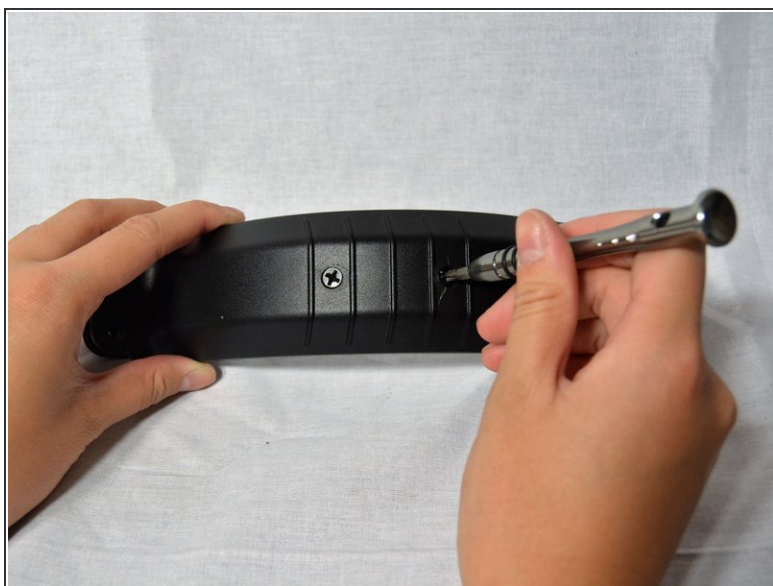
i There are also two nuts that secure the screws.

Step 8



- Wobble to remove the brake step.

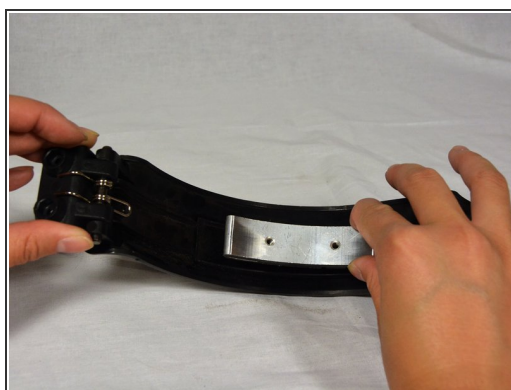
Step 9



- Remove the two 8 mm screws by twisting a Phillips #2 screwdriver counterclockwise.

 Twist the screwdriver clockwise to secure the screws.

Step 10



- Remove the brake pad.

To reassemble your device, follow these instructions in reverse order.