



Hover-1 Folding E-Scooter Deck Replacement

How to replace a damaged deck on the Hover-1 Folding eScooter.

Written By: Nicolo DiFronzo



INTRODUCTION

Is your deck on your Hover-1 Folding eScooter damaged? If so here is a guide to help you replace it with a new one.



TOOLS:

- [4mm Hex Key](#) (1)
 - [Phillips #2 Screwdriver](#) (1)
 - [4 mm Bit Extension](#) (1)
 - [10mm Wrench](#) (1)
-

Step 1 — Rear Wheel



- Remove either of the two 0.2 mm axle screws by using a hex bit 4.0 by turning clockwise.
- ⓘ The two screws are the same thread so find the screw that has the least torque. Only that screw will be able to removed in this step.
- ☑ Turn the hex bit 4.0 counterclockwise to reassemble the axle screws.

Step 2



- Slide off the plastic side panel.

Step 3



- Use a hex bit 4.0 to screw back in the 0.2 mm screw as tightly as possible by turning clockwise.
- ⓘ You will need to hold the other screw you are not replacing with an additional hex bit 4.0, so that the screws don't spin freely.

Step 4



- Flip over the scooter and use the hex bit 4.0 to remove the other 0.2 mm screw.

Step 5



- Slide off the other plastic side panel.

Step 6



- On the same side you removed the screw, use the bit extender to push down on the axle inside the wheel.
- ⓘ The axle pops out and the wheel easily comes off.
- ⓘ Two washers will pop out with the axle.

Step 7 — Brake Pad



- Remove the two 25mm screws by twisting a Phillips #2 screwdriver counterclockwise.

✦ Twist the screwdriver clockwise to reassemble.

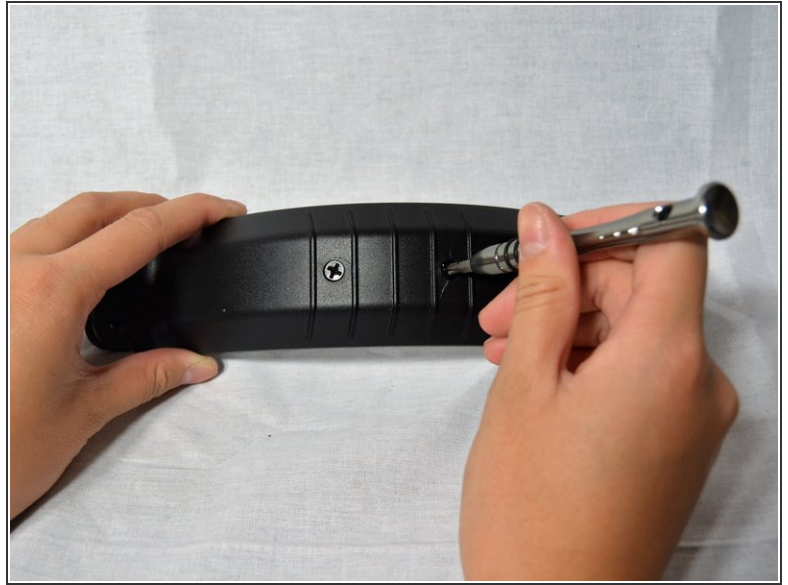
i There are also two nuts that secure the screws.

Step 8



- Wobble to remove the brake step.

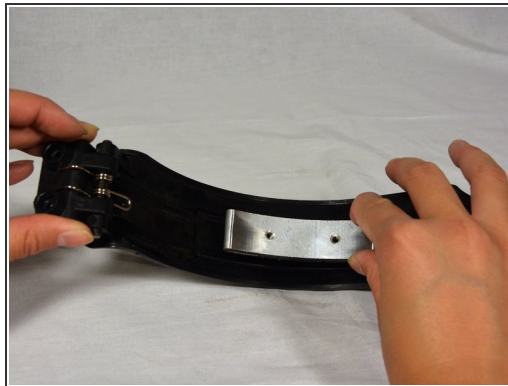
Step 9



- Remove the two 8 mm screws by twisting a Phillips #2 screwdriver counterclockwise.

- ☑ Twist the screwdriver clockwise to secure the screws.

Step 10



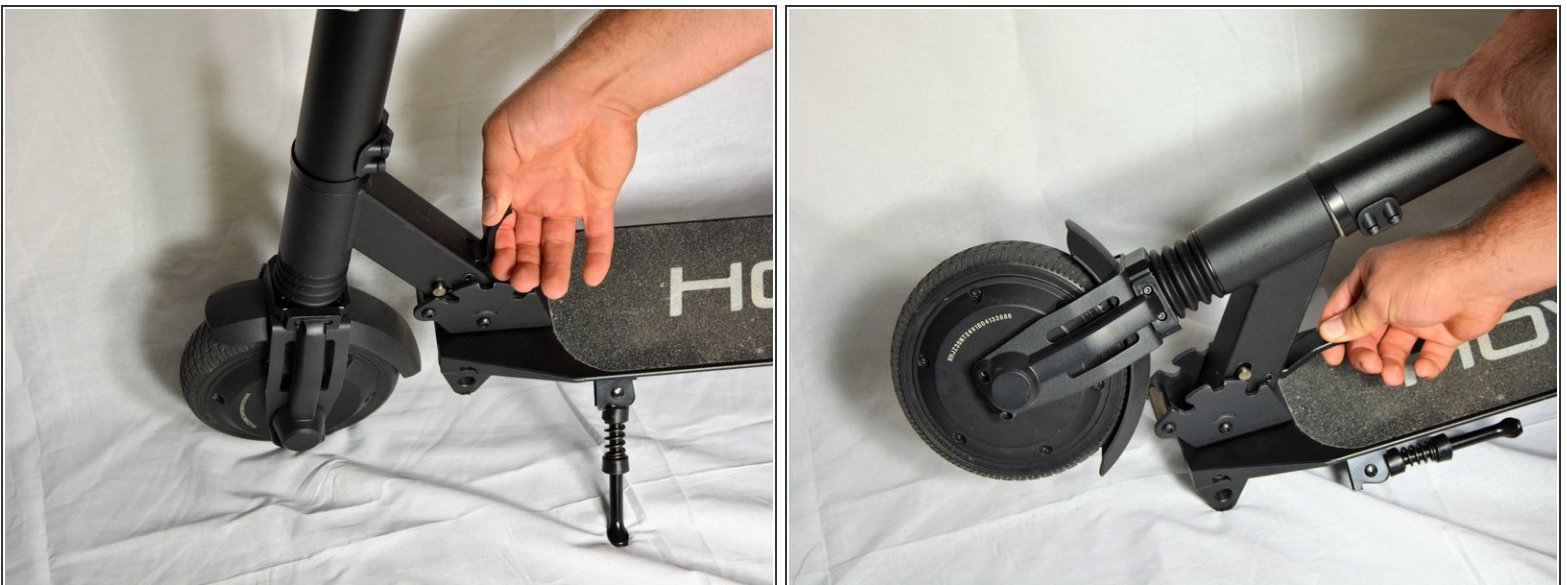
- Remove the brake pad.

Step 11 — Deck



- Hold the two 10mm nuts in place with a 10mm wrench.
 - Remove the two 33mm bolts connected to the 10 mm nuts by turning a hex 4.0 screwdriver counterclockwise.
- i** The nuts are on the bottom of the deck.
- ★** Turn clockwise to reassemble the bolts.

Step 12



- Fold the scooter by releasing the latch and pushing the handlebars to the rear of the device.

Step 13



- Hold the two hex nuts in place with a 10mm wrench.
- Remove the next two 33 mm bolts attached to the 10 mm hex nuts by turning a hex 4.0 screwdriver counterclockwise.
- ⓘ The deck will fall off after you remove the final bolts.
- 🔧 Turn the hex bit clockwise to reassemble.

To reassemble your device, follow these instructions in reverse order and use the new deck instead.