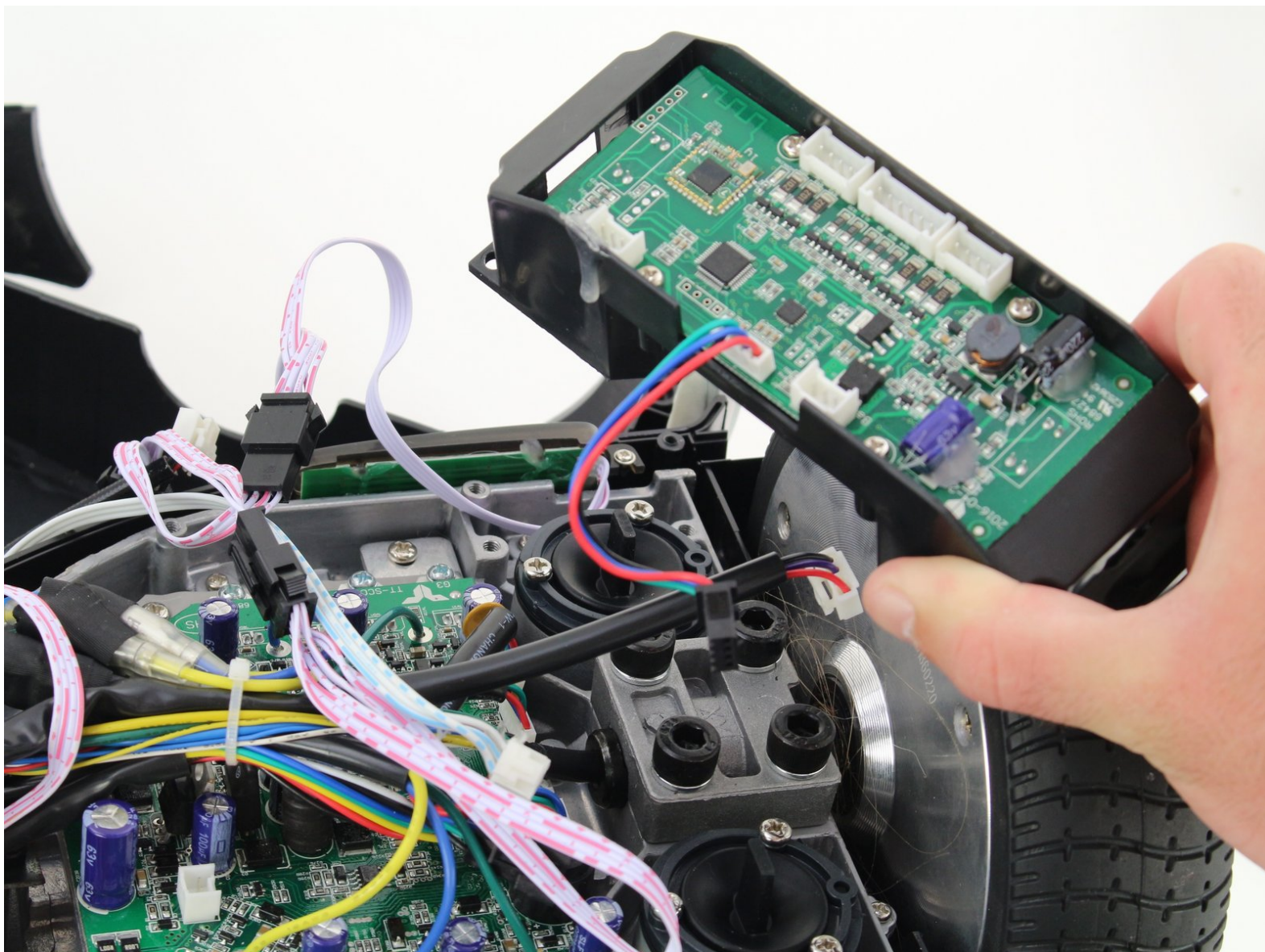




# Hover-1 H1 Gyroscope Sensor Assemblies Replacement

How to remove the gyroscope sensor assemblies for your Hover-1 H1 hover board.

Written By: Aaron Teh



---

## INTRODUCTION

This guide explains how to remove the sensor assembly for your Hover-1 H1 hover board.

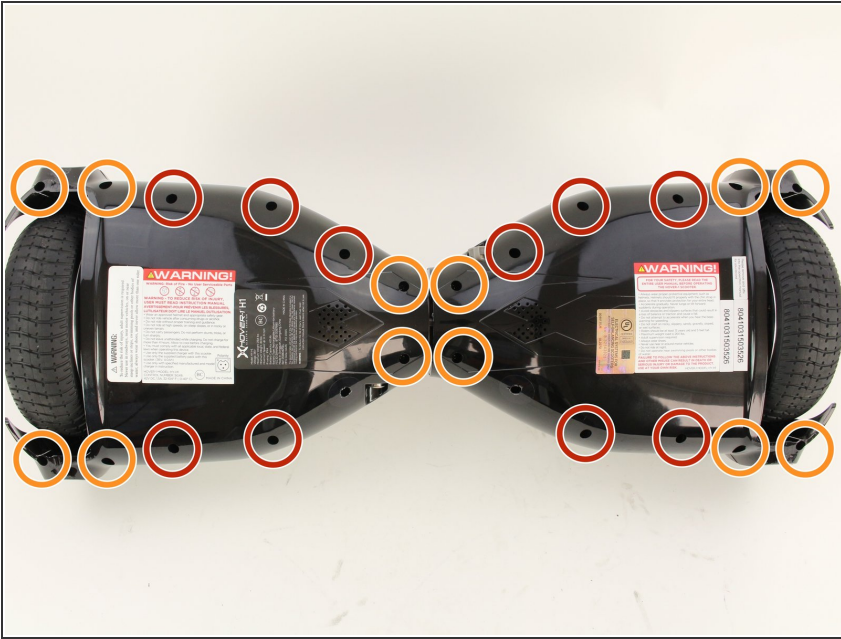
---



### TOOLS:

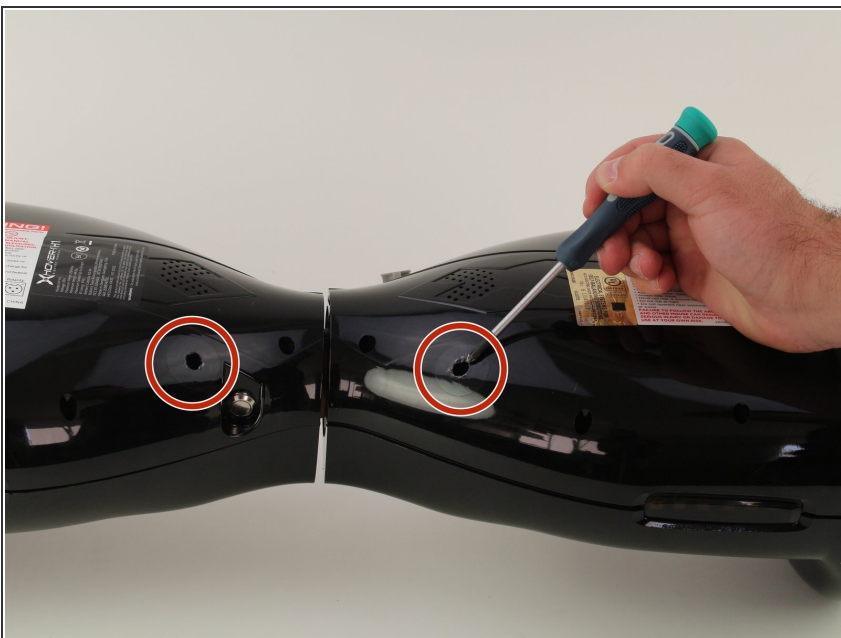
- [Phillips #2 Screwdriver](#) (1)
  - [Utility Knife](#) (1)
-

## Step 1 — Bottom Shell



- Remove the ten 9mm machine screws by using a long Phillips #2 screwdriver to rotate the screws counterclockwise.
- Remove the twelve 9mm sheet metal screws by using a long Phillips #2 screwdriver to rotate the screws counterclockwise.

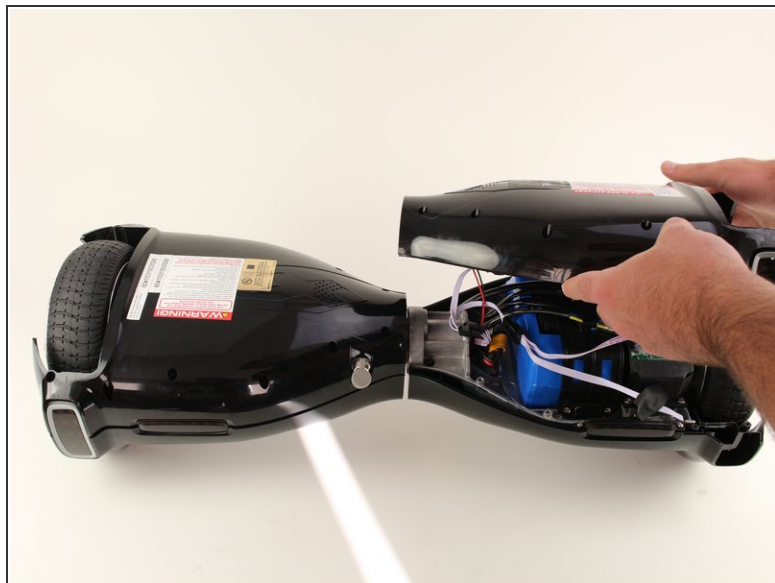
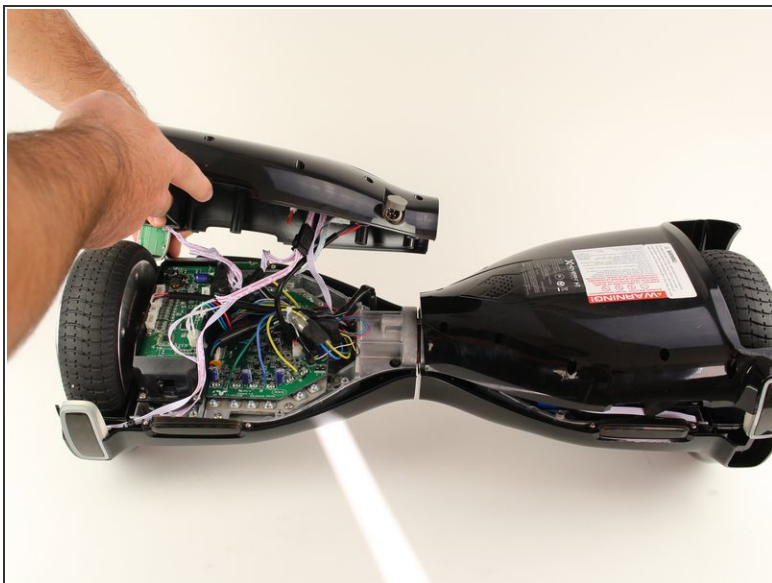
## Step 2



- Puncture the two black stickers by using the tip of a screwdriver.
- Remove the two 9mm machine screws by using a long Phillips #2 screwdriver to rotate the screws counterclockwise.



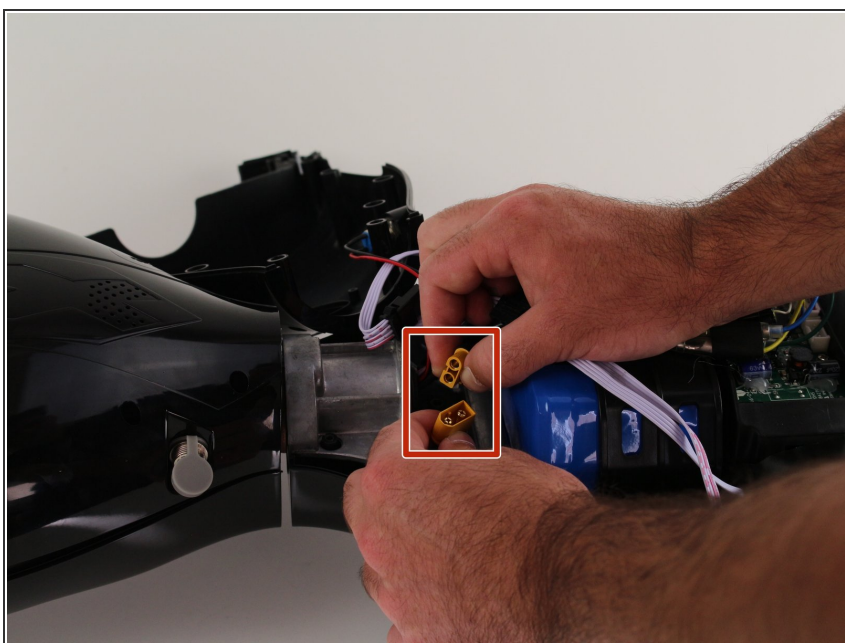
## Step 3



- Lift each side of the bottom shell by pulling up.

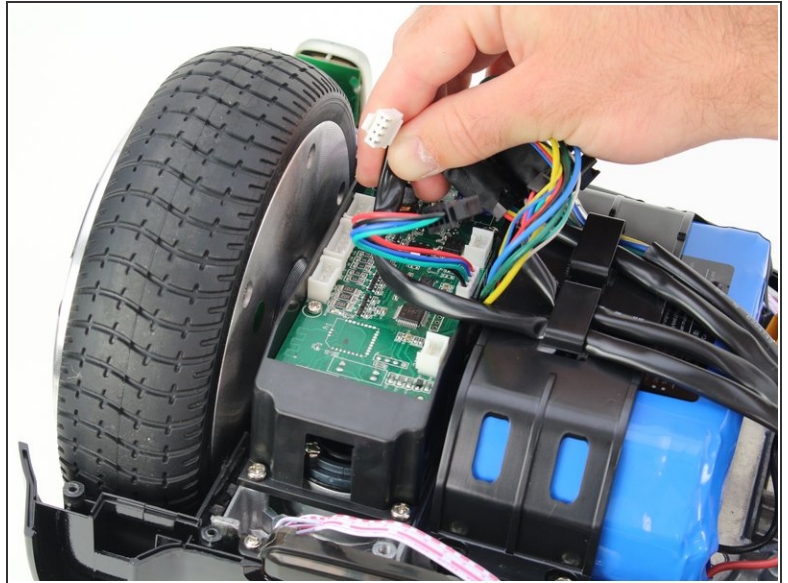
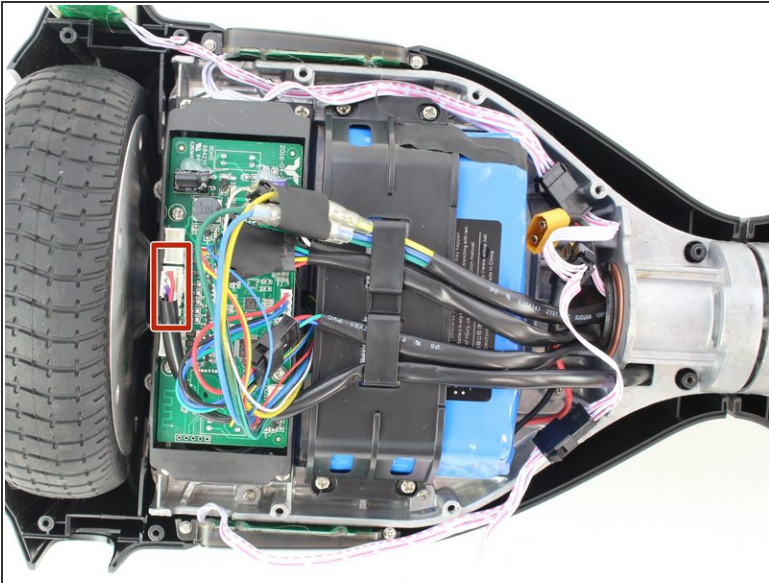
⚠ When lifting the shell, take care to not tear any cables from their connectors.

## Step 4



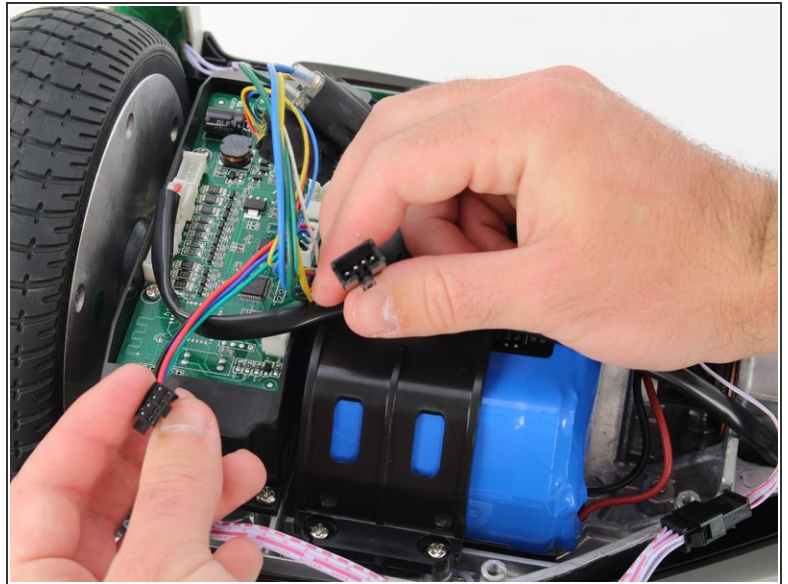
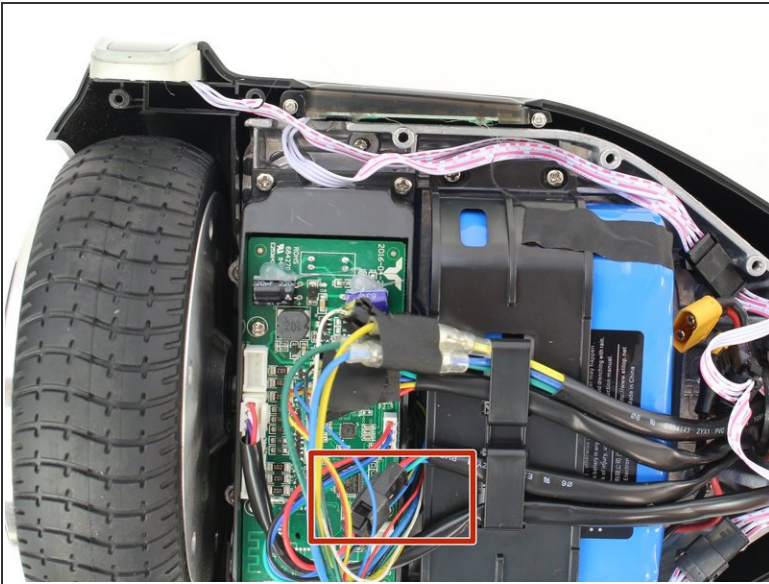
- Unplug the battery by pulling gently on both sides of the orange connector.

## Step 5 — Gyroscope Sensor Assemblies



- On the battery side of the hoverboard, remove the red, black, and purple sleeved cable from the sensor assembly by squeezing the tab and pulling up.

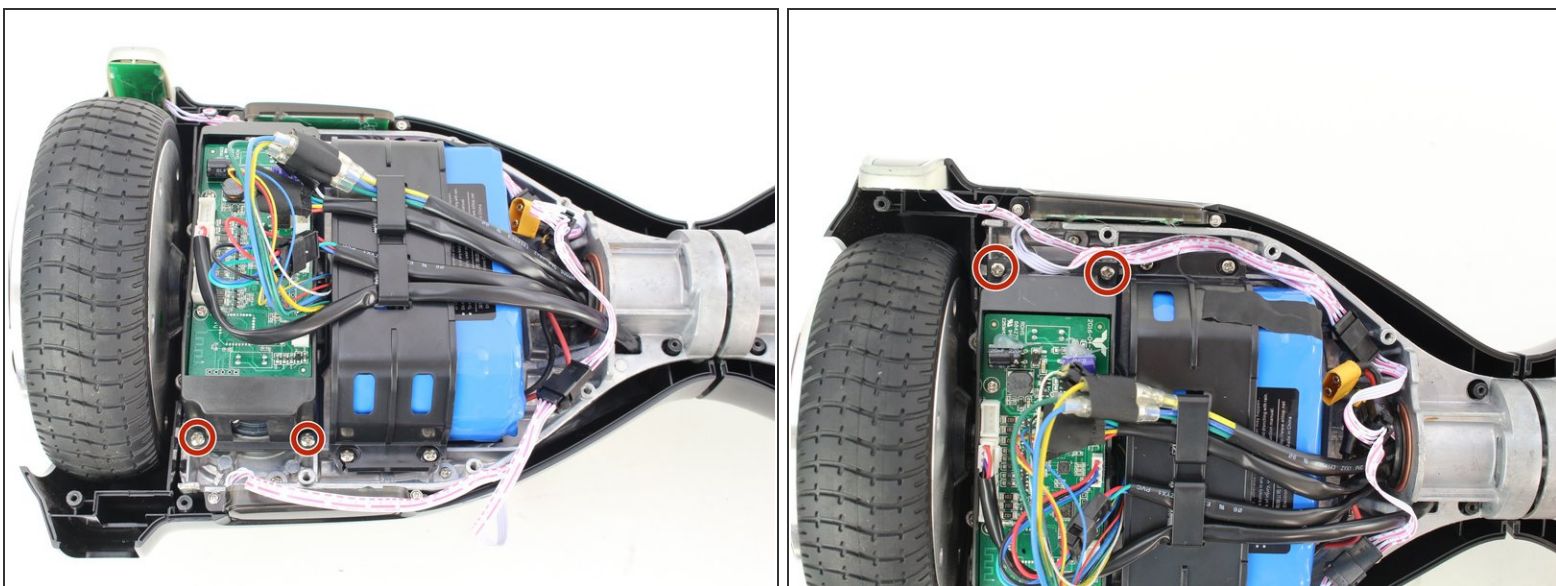
## Step 6



- Remove the red, blue, and green cable from the cable extension connected to the sensor assembly by squeezing the tabs on the side of the connector.

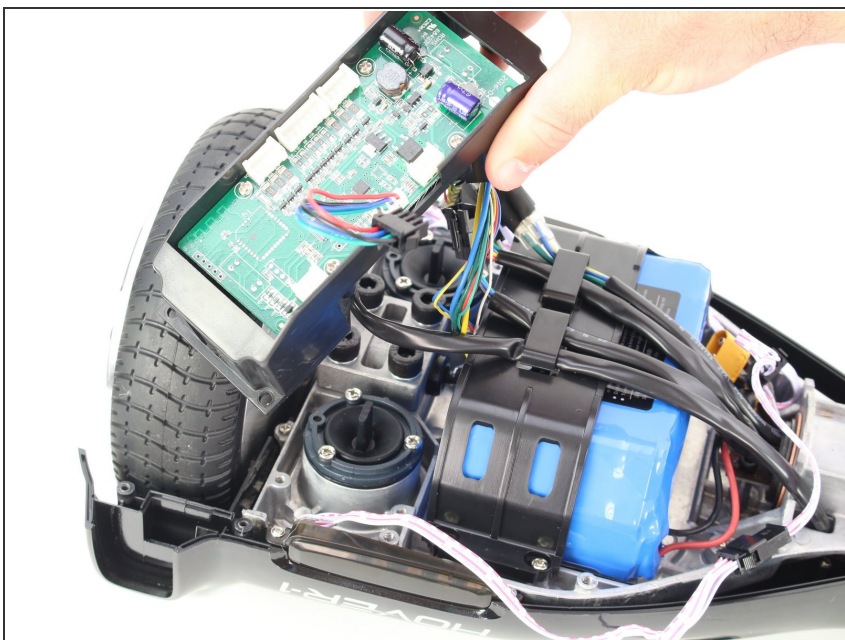


## Step 7



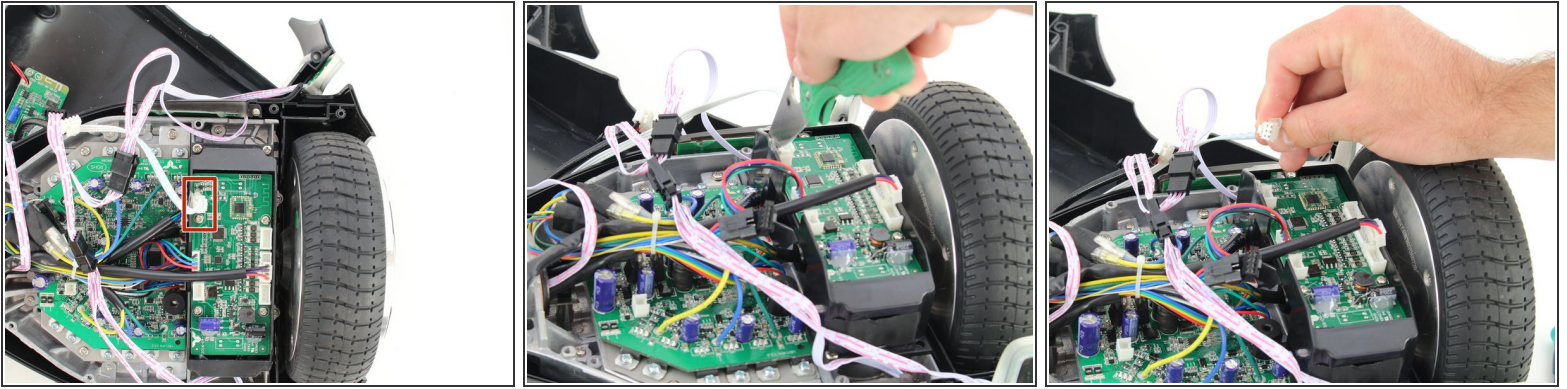
- Remove the four 7mm screws by using a Phillips #2 screwdriver to rotate the screws counterclockwise.

## Step 8



- Remove the sensor assembly on the battery side of the hoverboard by gently lifting and pulling away from the hoverboard.

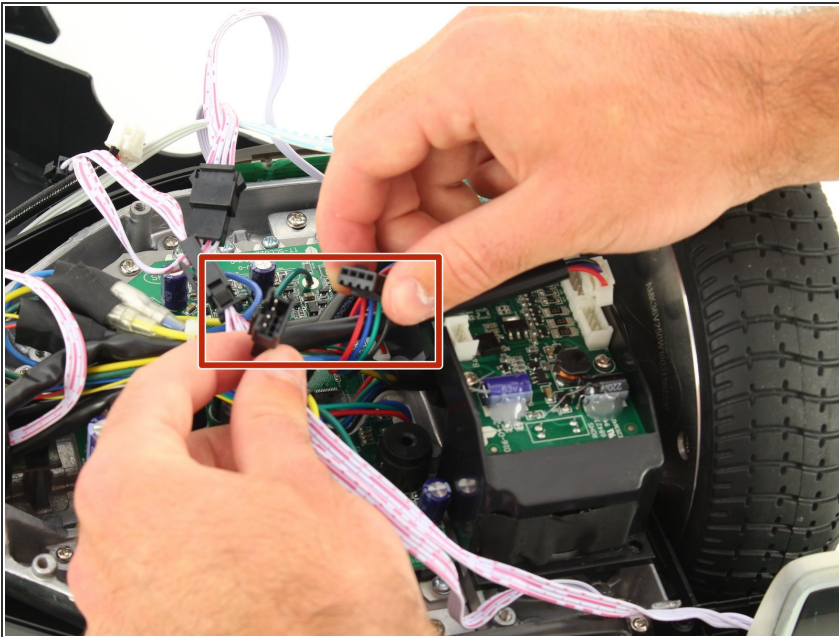
## Step 9



- Remove the hot glue holding in the connectors with a utility knife.
- Remove the white cable from the sensor assembly by squeezing the connector and pulling the connector up.

⚠ Be careful not to touch any parts of the circuit boards with the knife.

## Step 10

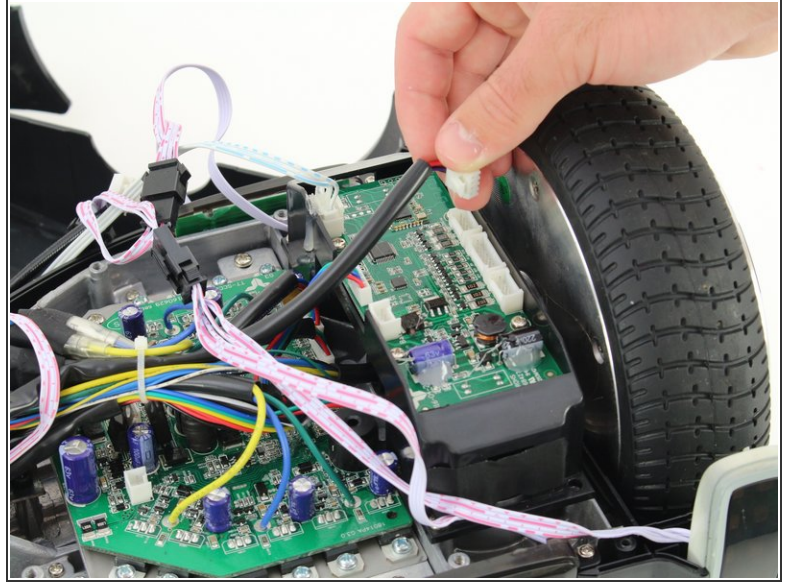
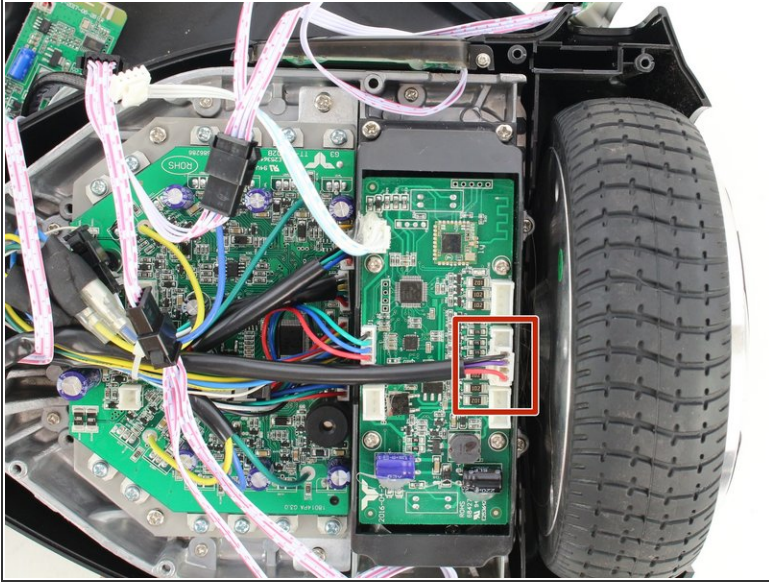


- Remove the red, blue, and green cable from the extension connected to the sensor assembly by



squeezing the tabs on the side of the connector.

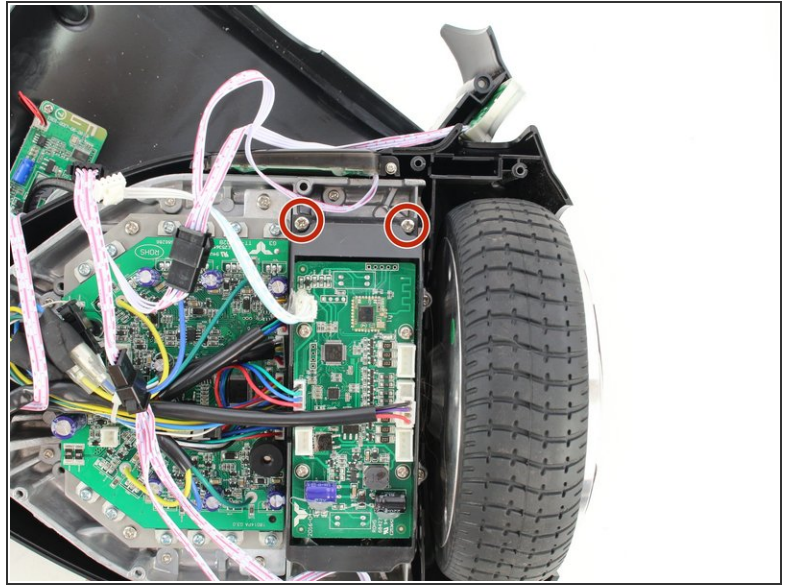
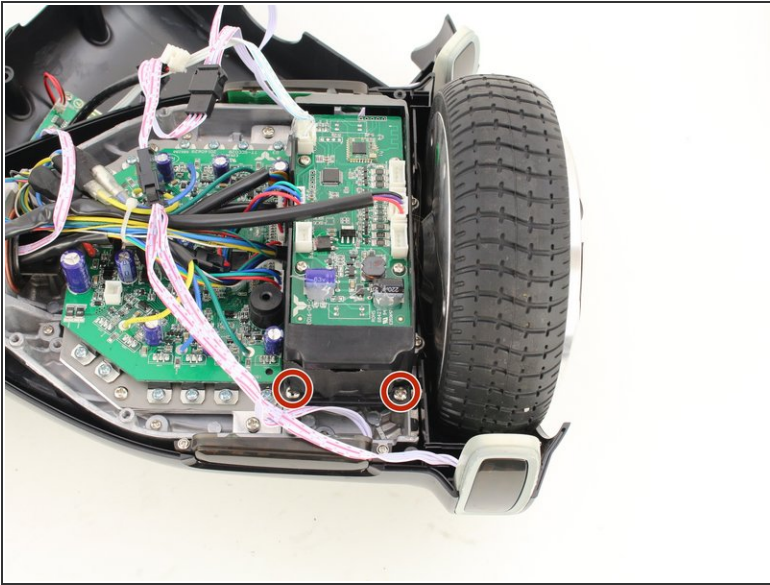
## Step 11



- Remove the red and black sleeved connector from the sensor assembly by squeezing the tab and pulling up.

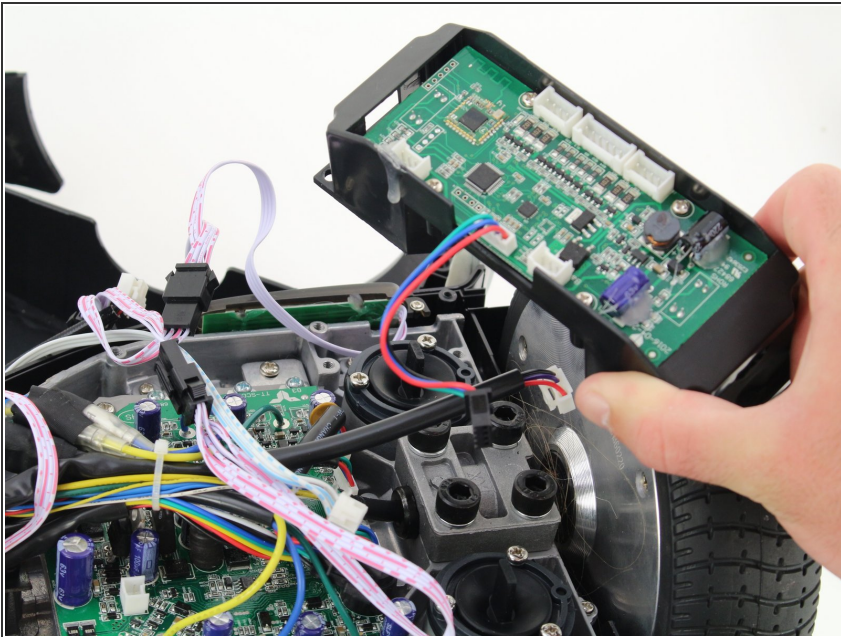


## Step 12



- Remove the four 7mm screws by using a Phillips #2 screwdriver to rotate the screws counterclockwise.

## Step 13



- Remove the sensor assembly on the motherboard side of the hoverboard by gently lifting and pulling away from the hoverboard.

To reassemble your device, follow these instructions in reverse order.