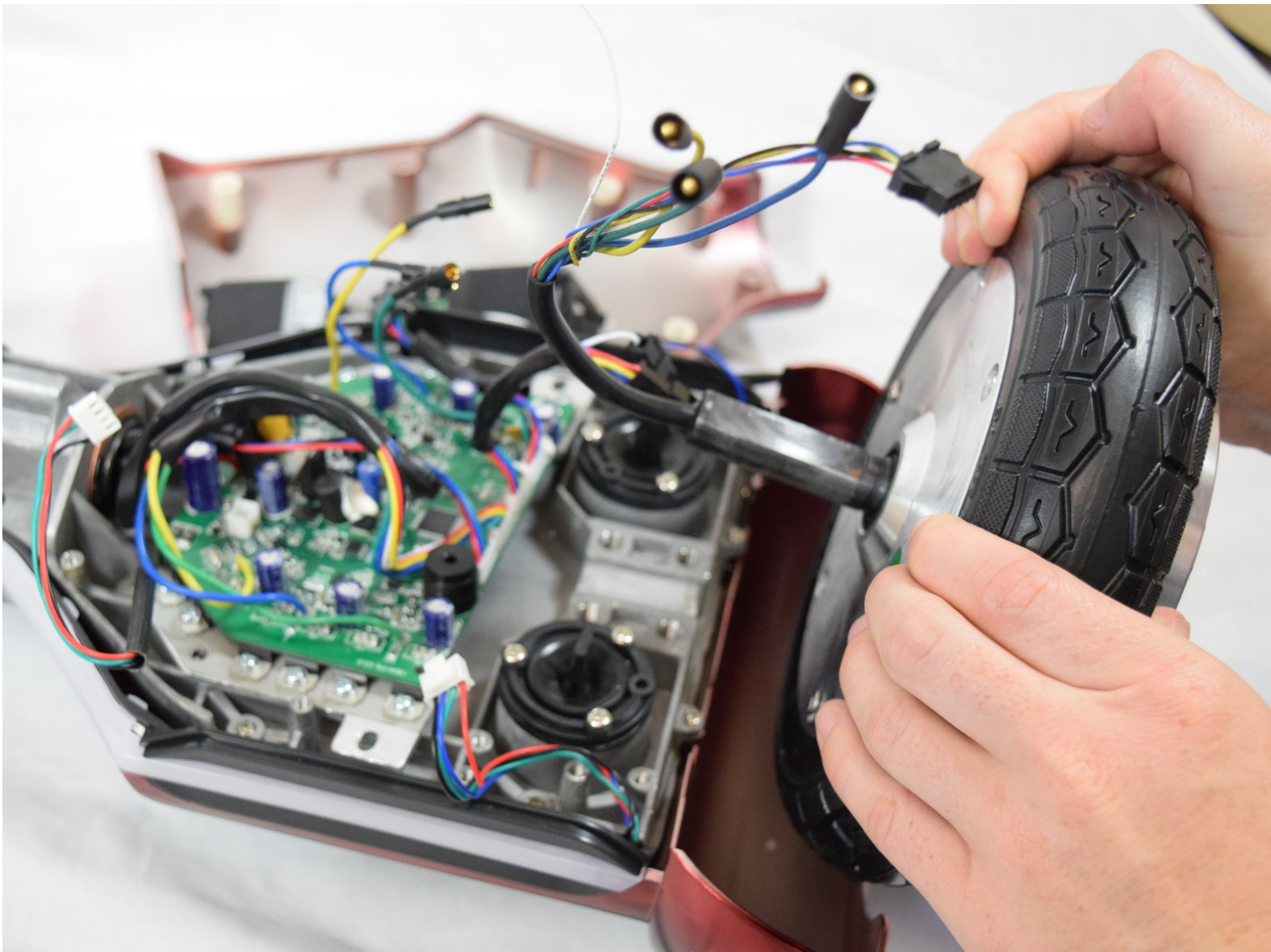




# Hover-1 Horizon Wheel/Motor Replacement

How to replace the wheel and motor of the Hover-1 Horizon.

Written By: Casey Winans



## INTRODUCTION

Is one side of the hoverboard not functioning, or unresponsive? This is a guide to show you how to replace the wheel, or motor (which is apart of the wheel) on the Hover-1 Horizon. This guide requires a Phillips #2 and a Phillips #1 screwdriver, and a 6mm hex key.



### TOOLS:

- [Phillips #1 Screwdriver](#) (1)
  - [Phillips #2 Screwdriver](#) (1)
  - [6 mm Hex Key](#) (1)
-

## Step 1 — Base Plate



- Remove the six 12mm Phillips #2 screws holding the base plate.

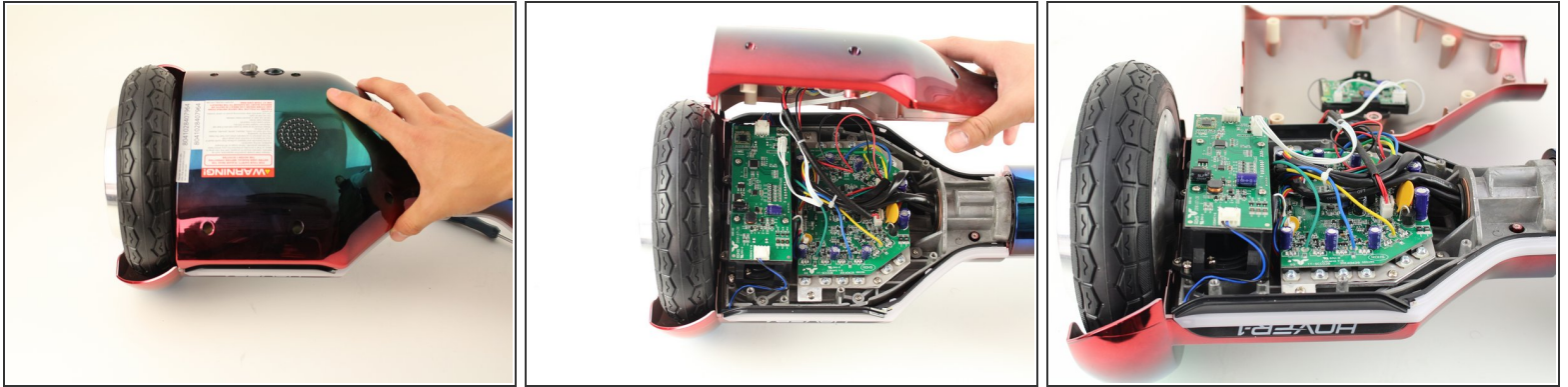
## Step 2



- Remove the two 11mm Phillips #1 screws that hold the base plate to the body.

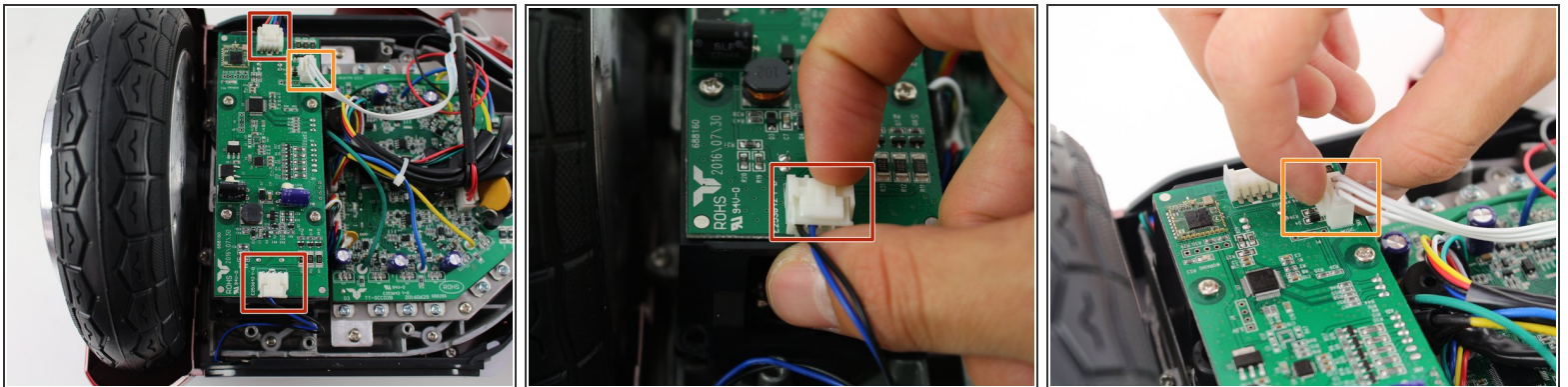


## Step 3



- Remove the base plate by lifting it up.
- ⓘ The base plate is connected to the body with wires. The wires are long enough to set the base plate to the side.

## Step 4 — Left Gyroscope Sensor Board



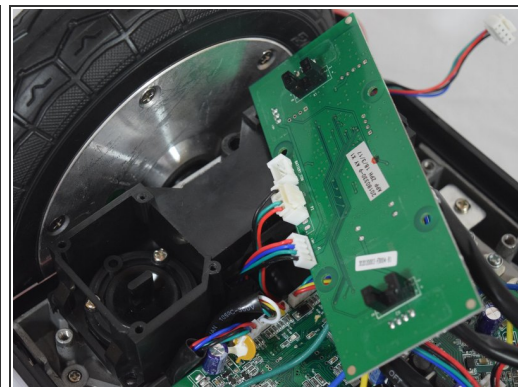
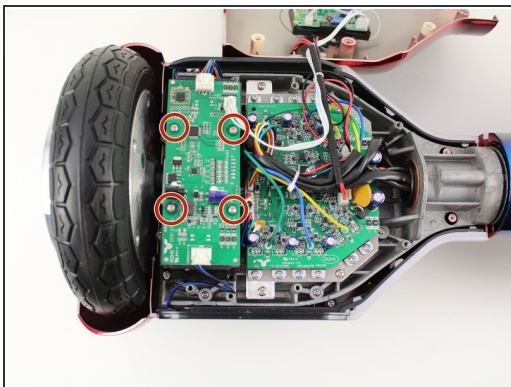
- Remove the two connectors on either side of the board by lifting the tab and pulling out.
- Remove the connector in the middle of the board by squeezing the tab and pulling up.

## Step 5



- Remove the four 11mm Phillips #1 screws that hold the cover on.

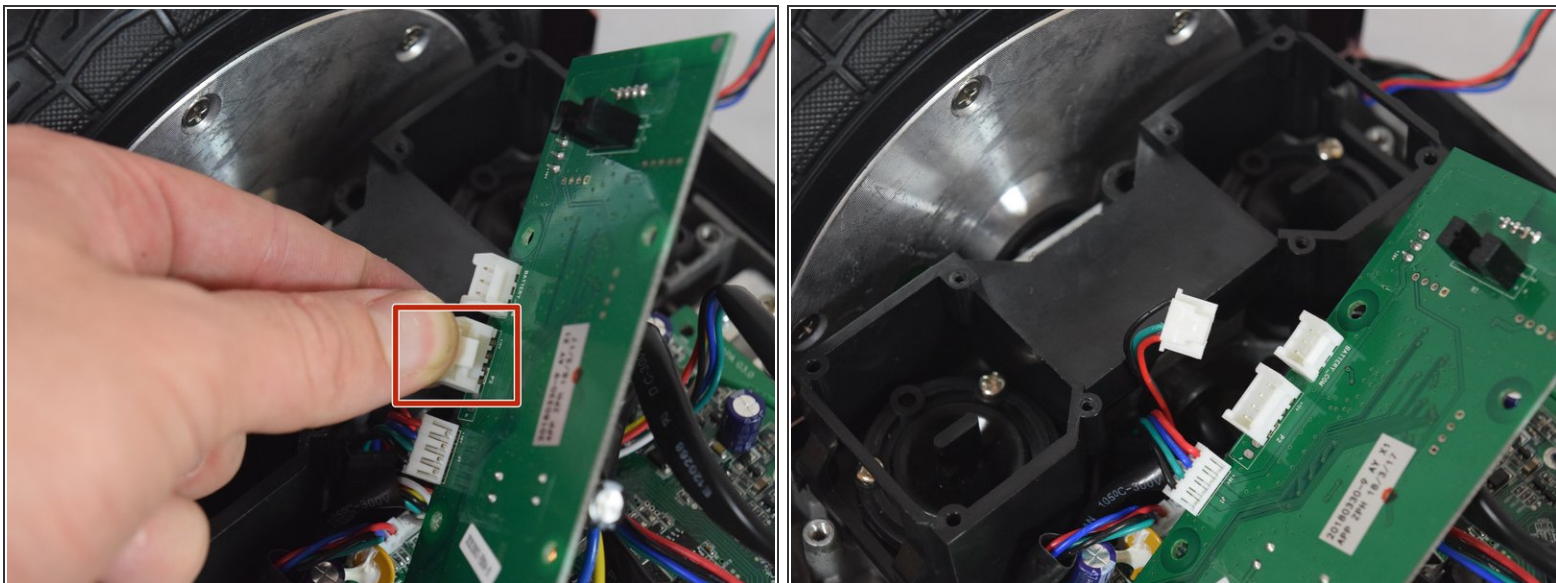
## Step 6



- Remove the four 11mm Phillips #1 screws that attach the gyroscope board to the mount.
- Lift the board to reveal the connections on the bottom.

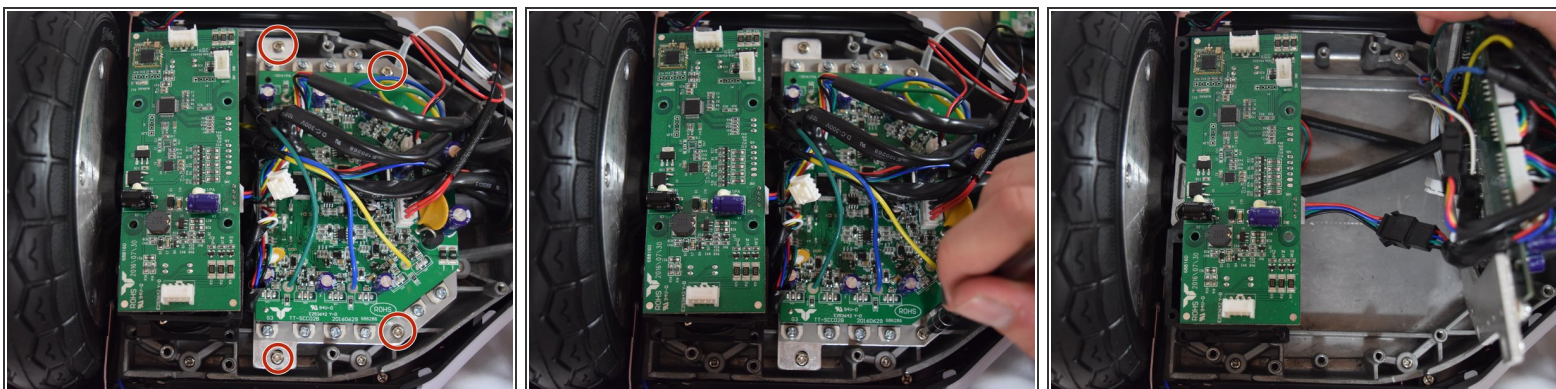


## Step 7



- Remove the middle connector by squeezing the top of the tab and pulling up.

## Step 8



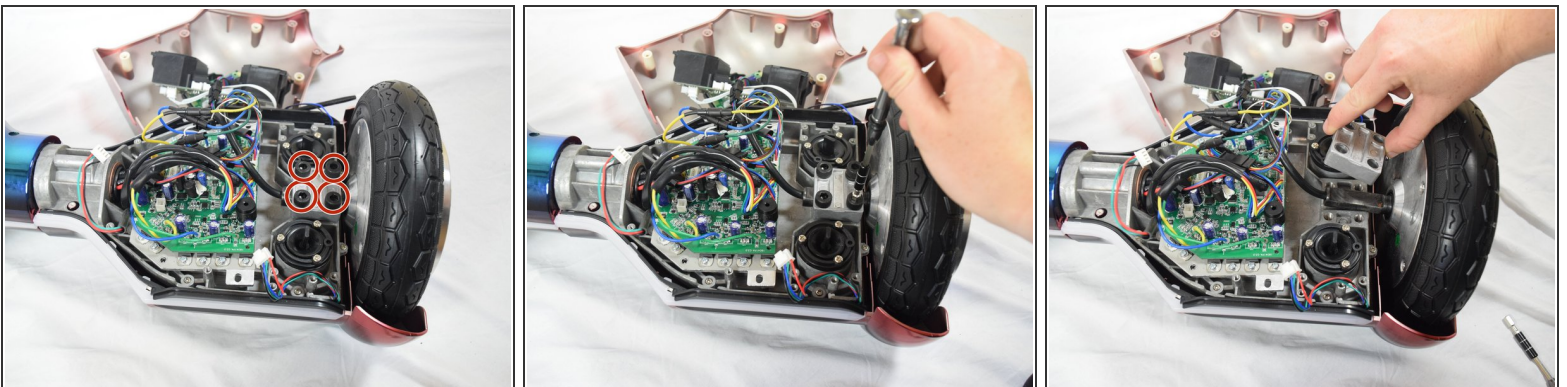
- Remove the four 12mm Phillips #2 screws that hold the motherboard to the base.
- Pull the motherboard away from the gyroscope by grabbing it with two hands and pulling it to the right .

## Step 9



- Unclip the black connector by squeezing both sides and pulling them apart.

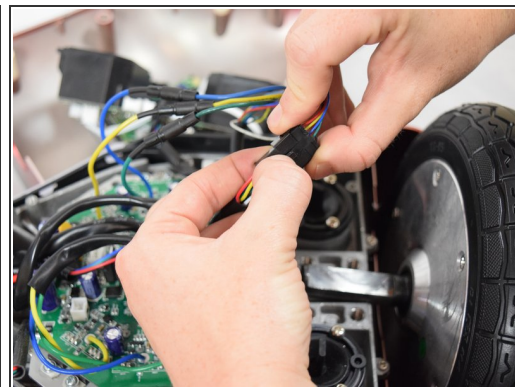
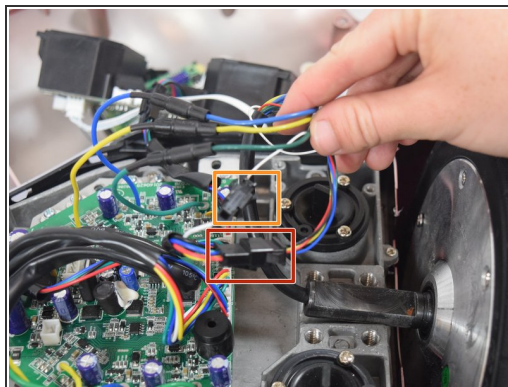
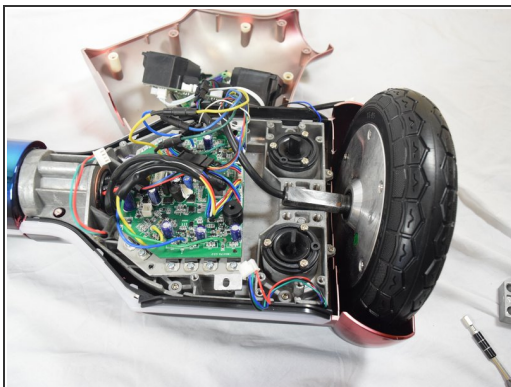
## Step 10 — Wheel/Motor



- Remove the four 30mm Hex #6 screws.
- Lift away the silver bracket and set it to the side.

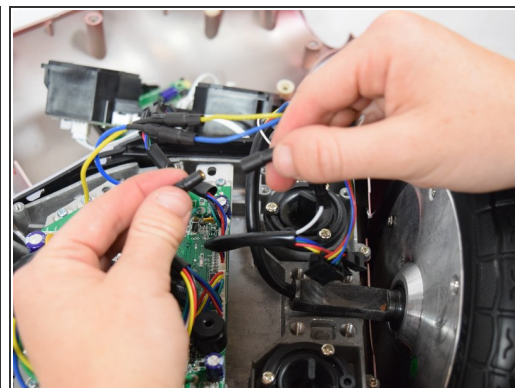
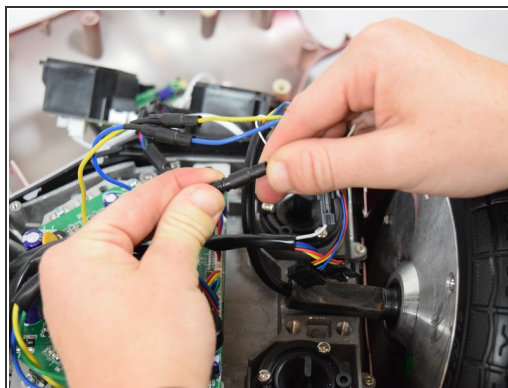
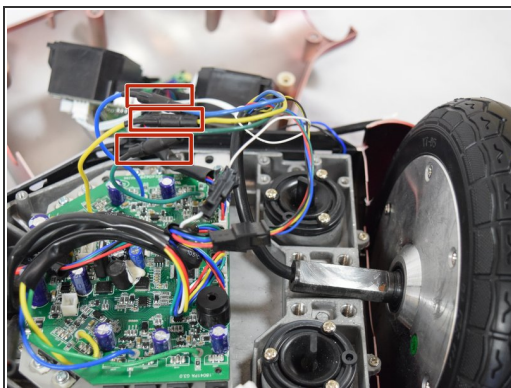


## Step 11



- Disconnect the first clip by squeezing the latch that hold the clips together while pulling apart.
- Disconnect the second clip by squeezing the tab while pulling the clip apart.

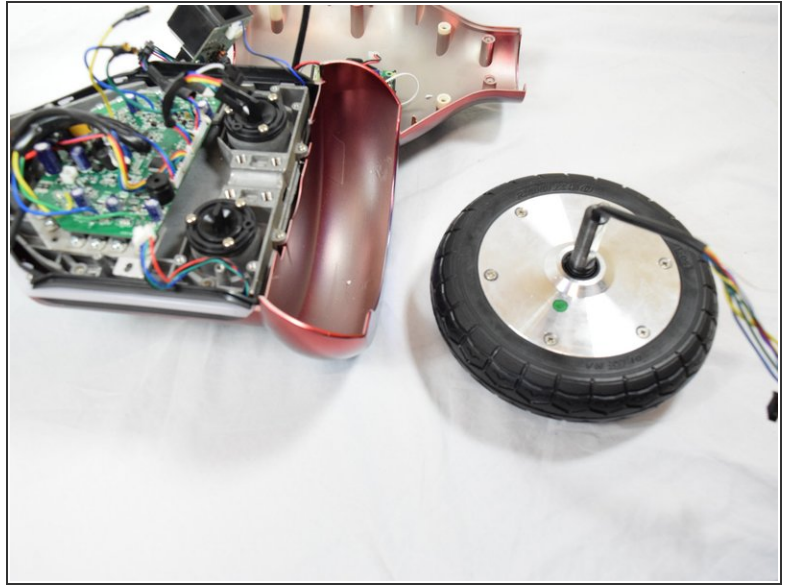
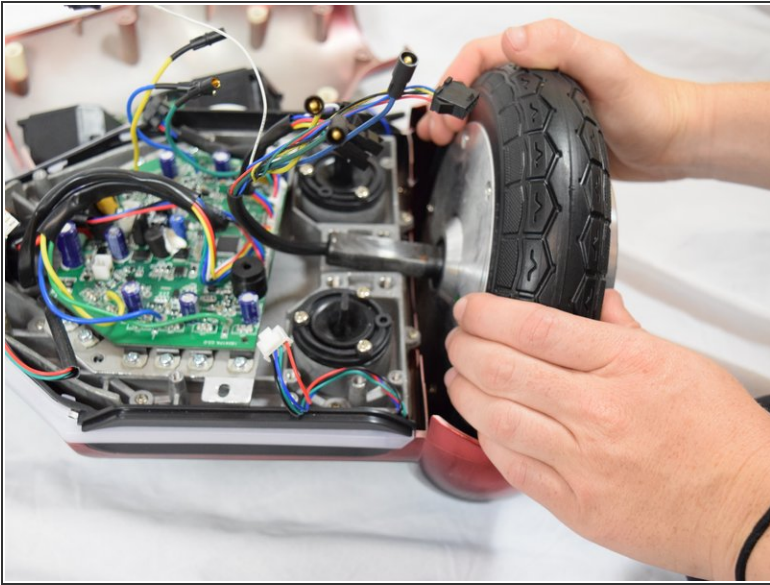
## Step 12



- Detach the remaining three connections by pulling them apart.



## Step 13



- Remove the wheel by lifting it away from the base with both hands.

To reassemble your device, follow these instructions in reverse order.