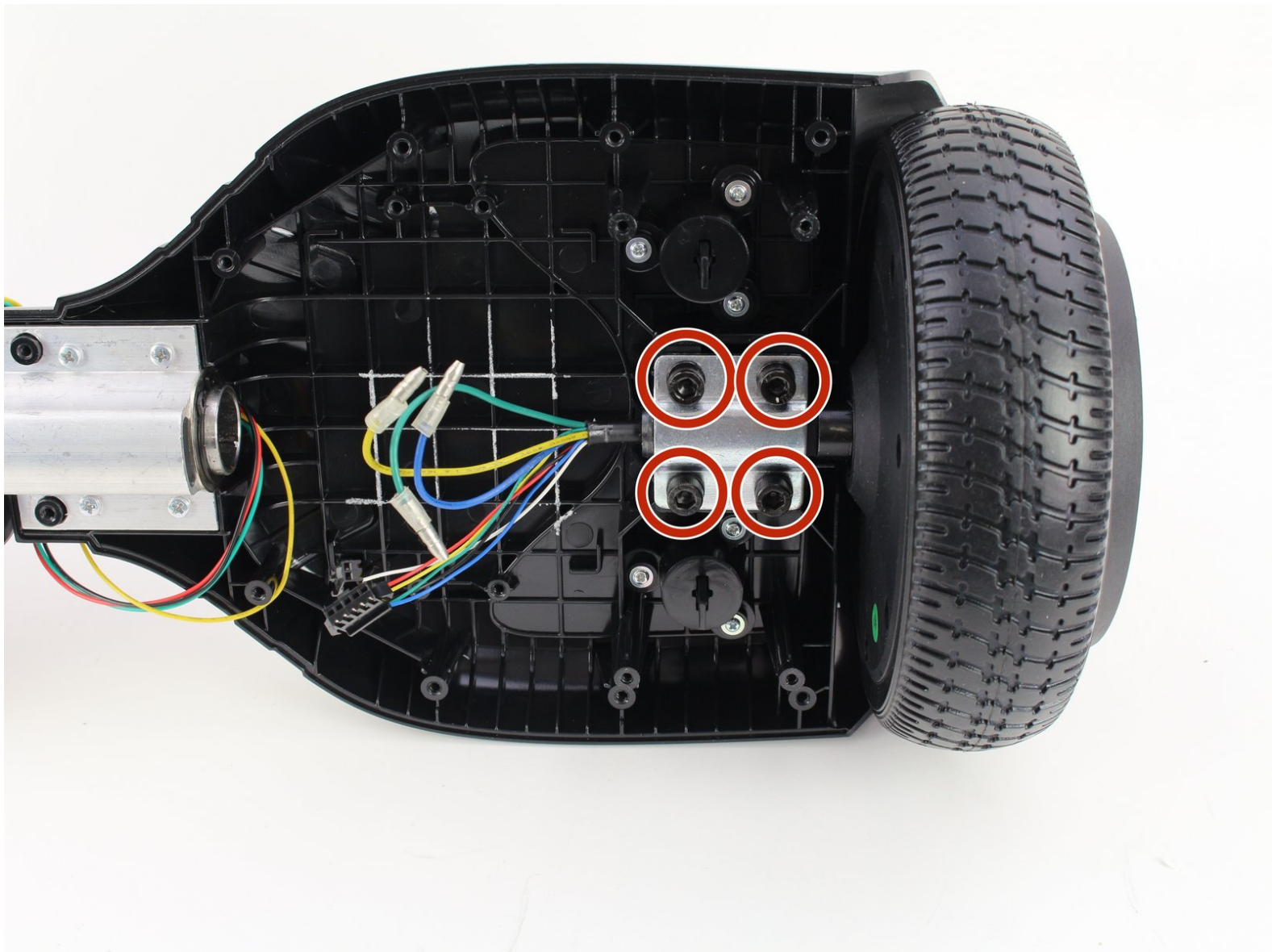




Hover-1 Liberty Wheel Motor Replacement

Replace the wheel of the Hover-1 Liberty hoverboard.

Written By: Eduardo Miranda



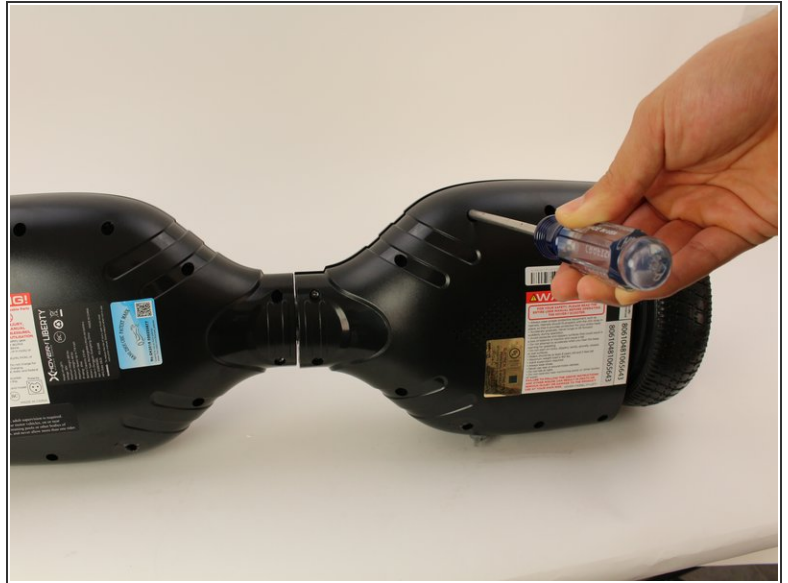
INTRODUCTION

If the hoverboard is unwilling to move and it is fully charged, there may be an issue with the wheel motors.

TOOLS:

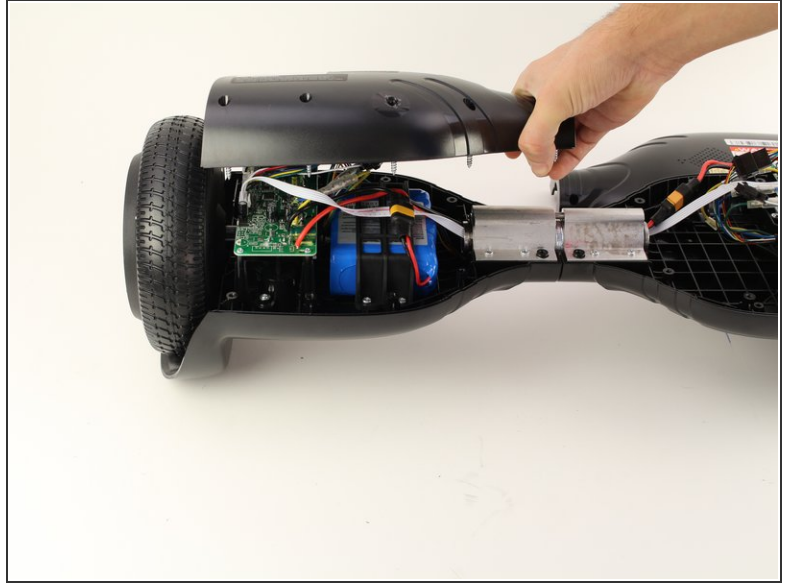
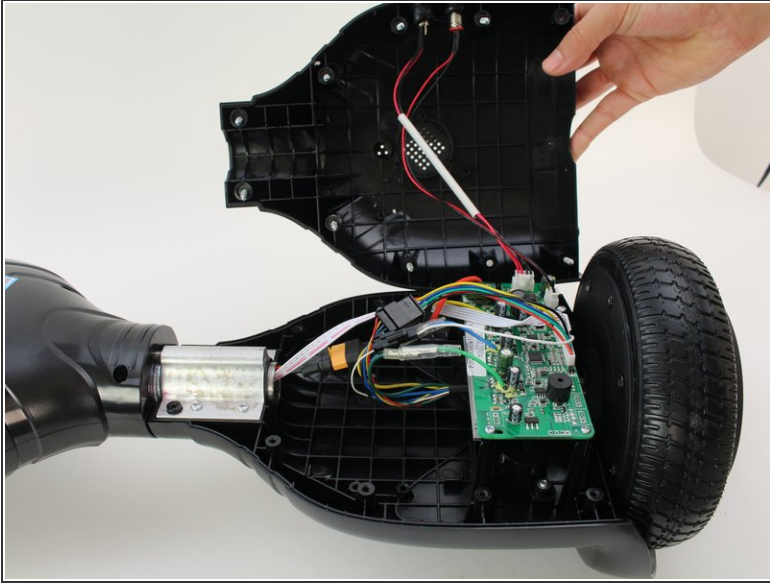
- [Phillips #2 Screwdriver](#) (1)
 - [Phillips #1 Screwdriver](#) (1)
 - [6mm Allen Socket](#) (1)
-

Step 1 — Bottom Cover



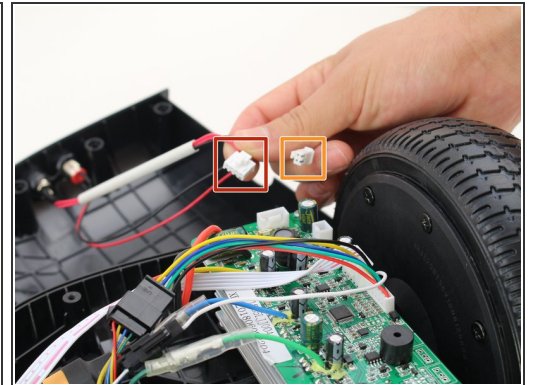
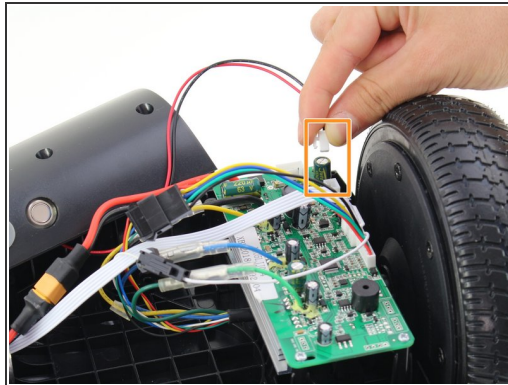
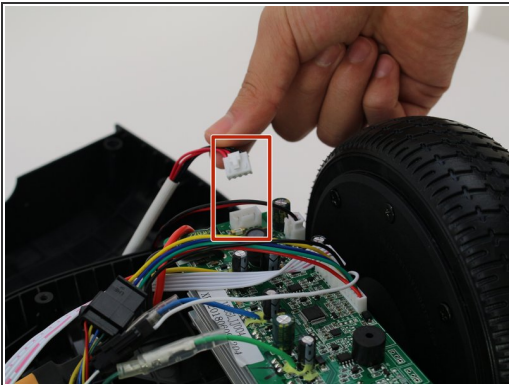
- Flip the hoverboard over so the labels are facing upwards.
- Remove the twenty 18mm screws using a Phillips #2 screwdriver and twisting counterclockwise.

Step 2



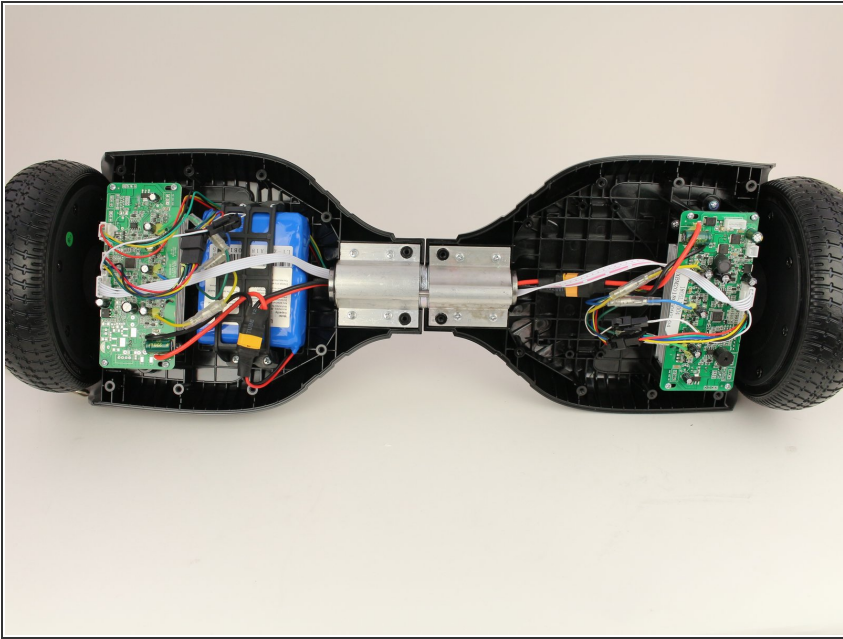
- Remove the bottom cover by lifting it away from the hoverboard.
- ⓘ The cover on the side without the battery has two wires connecting the power button and charging port.

Step 3



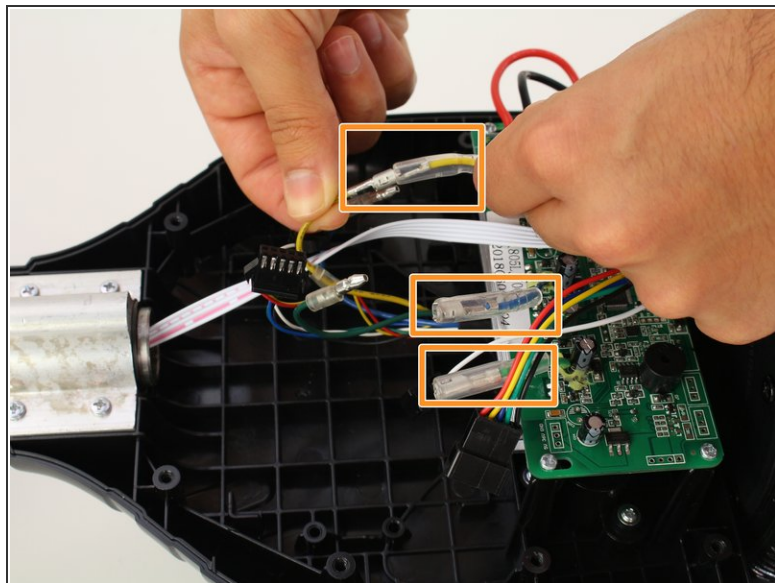
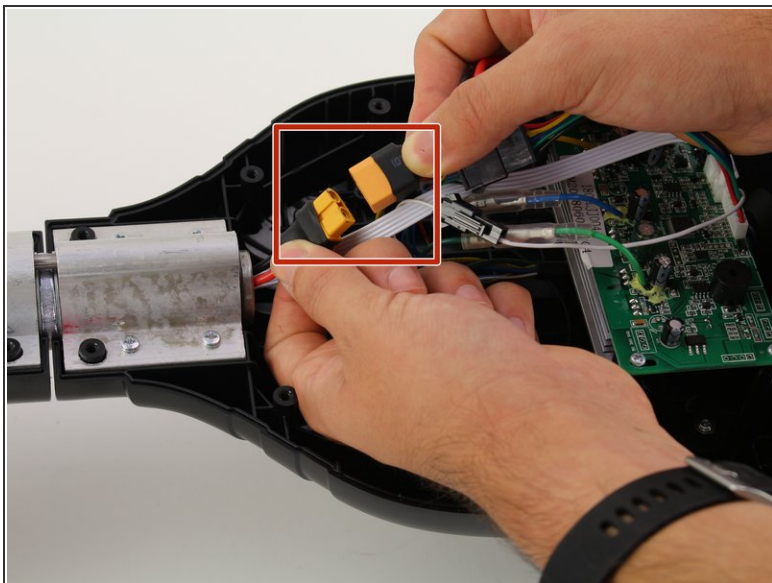
- Remove one connector from the non-battery side circuit board.
- Remove the next connector from the non-battery side circuit board.
- ⓘ To remove the connectors, pinch the plug and pull away from the circuit board.

Step 4 — Gyroscope Sensor Boards



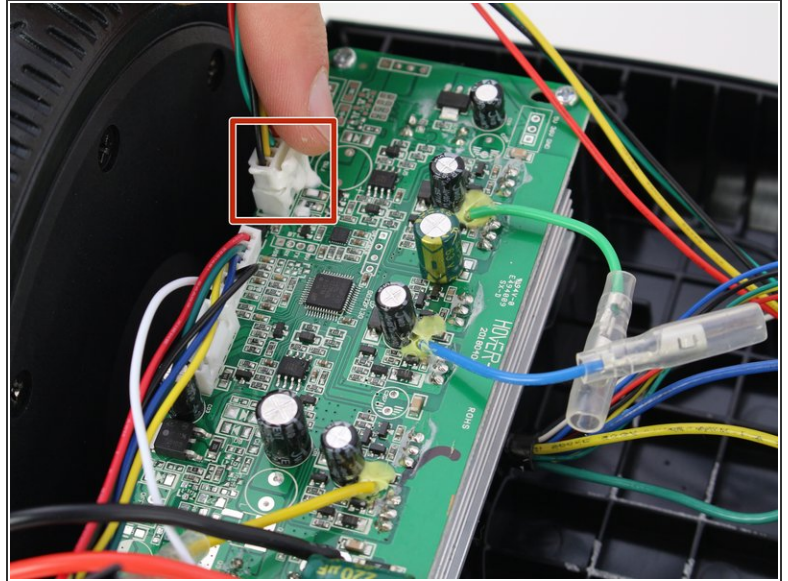
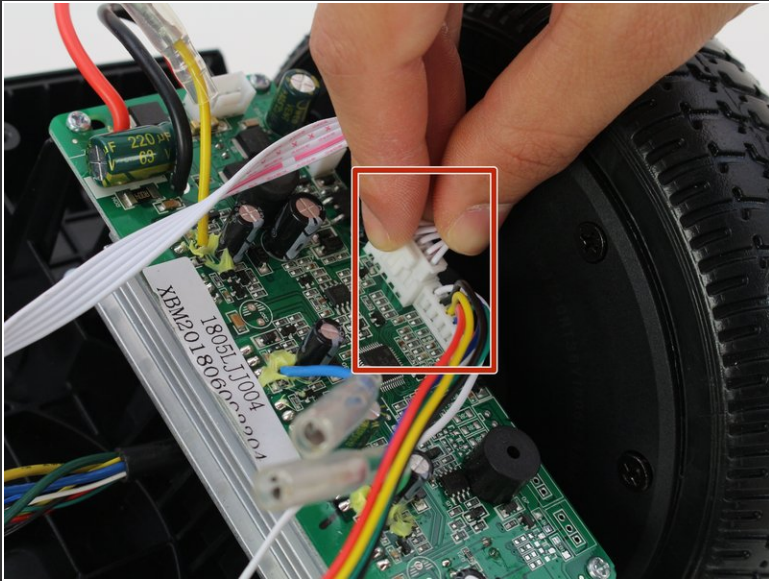
- Place the hoverboard so the sensor boards face you.

Step 5



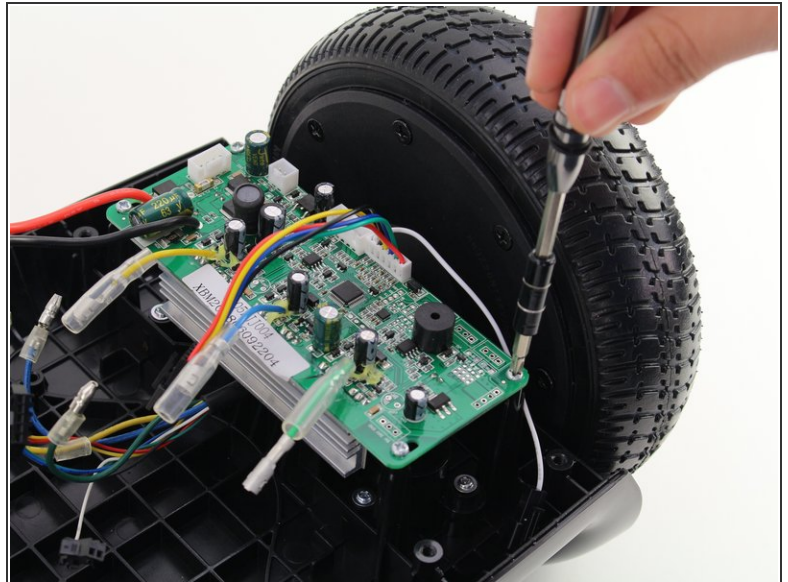
- Remove battery connector by pulling it apart.
 - Slide the rubber sheaths away from the connector on the blue, green, and yellow wires.
 - Disconnect the colored wires by pulling them apart.
- ✦ The large colored wires connecting the sensor boards to the wheels need to match for the motor to operate correctly.

Step 6



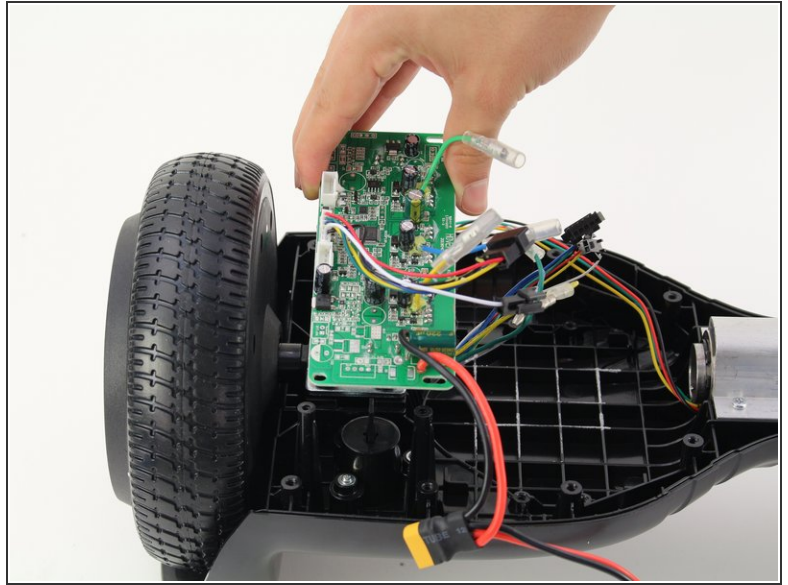
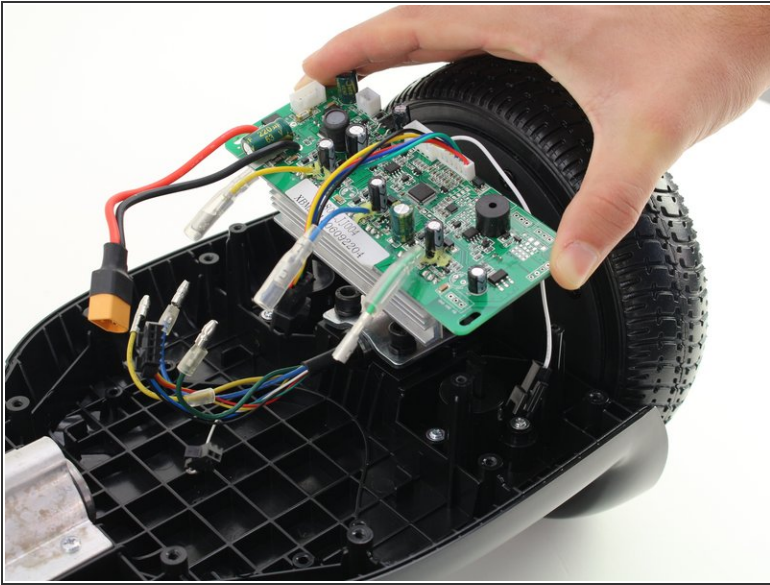
- Remove the white cable from the sensor boards by disconnecting the cable on each side of the hoverboard.
- ⓘ To release the cable connector, squeeze the sides while pulling it away from the sensor board.

Step 7



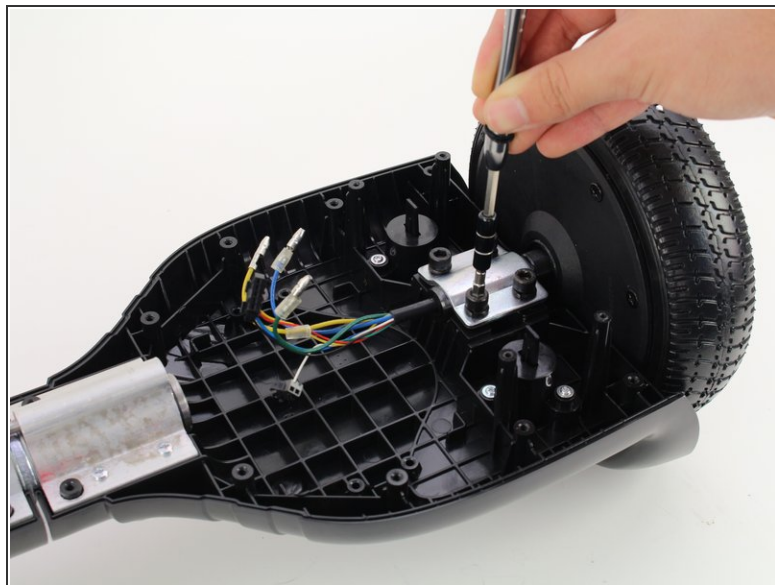
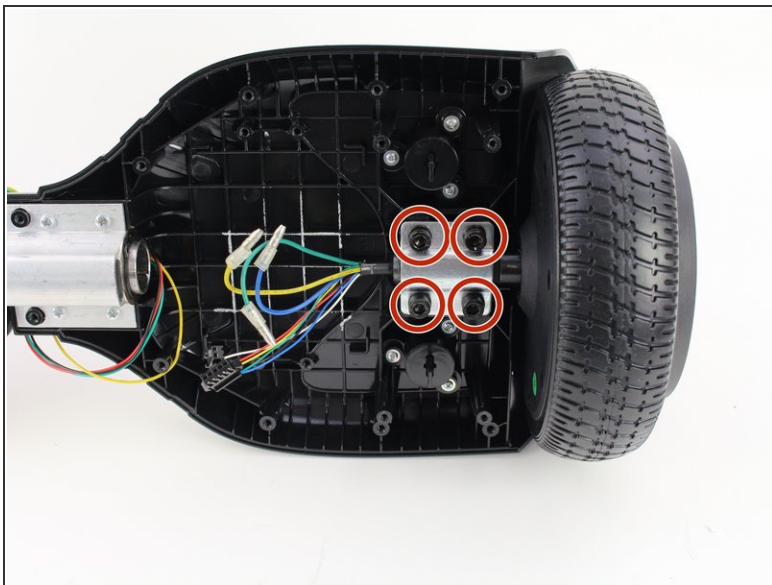
- Remove the four 10mm screws with a Phillips #1 screwdriver.

Step 8



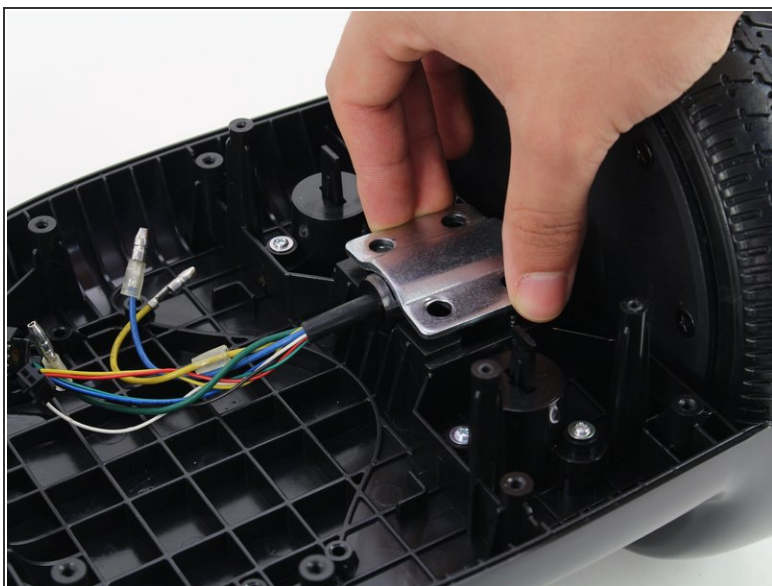
- Remove the sensor board by lifting it away from the hoverboard.
- ⓘ Repeat steps 4-8 to remove the sensor board from the other side.

Step 9 — Wheel Motor



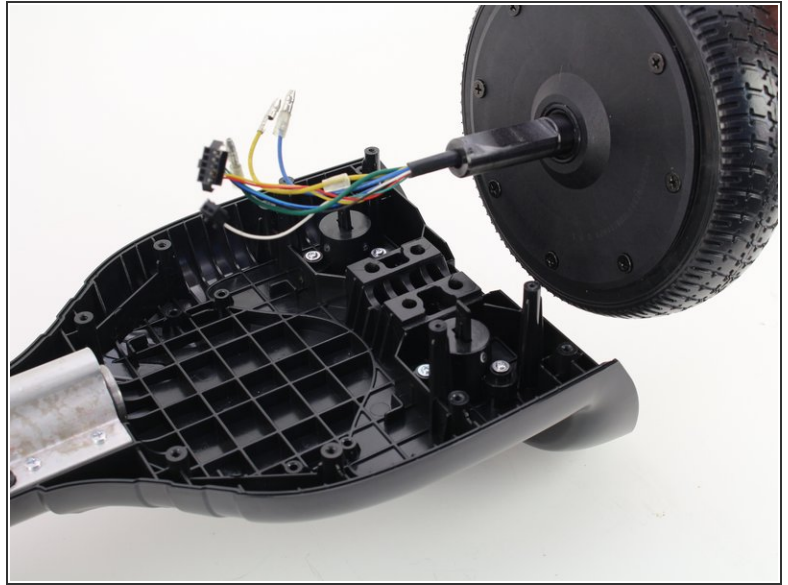
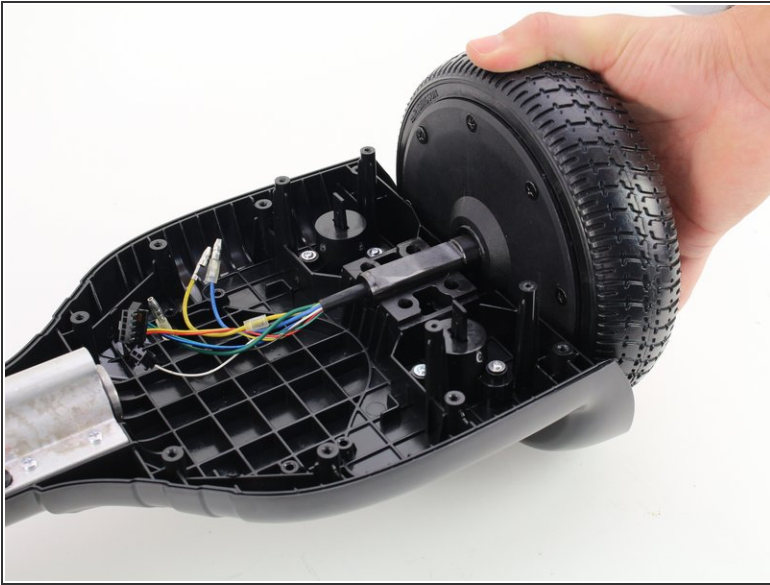
- Place the hoverboard so the four 36mm Allen bolts are pointing up.
- Remove the four 36mm Allen bolts on each side using a 5mm Allen Wrench.
- ☑ The four Allen bolts have lock washers.

Step 10



- Lift the metal retaining plate away from the motor shaft.

Step 11



- Lift motor assembly away from hoverboard.
- ☒ There is a flat section on the motor shaft that needs to point up, towards metal plate.
- ☒ The motor assembly should be flush with side of hoverboard.

To reassemble your device, follow these instructions in reverse order.