



Hover-1 Matrix LED Replacement

When the Hover-1 Matrix is turned on, the LED light will also be turned on, showing users that the hover board is on.

Written By: Jici Zhuang



INTRODUCTION

Use this guide to replace the LED lights in your Hover-1 Matrix.



TOOLS:

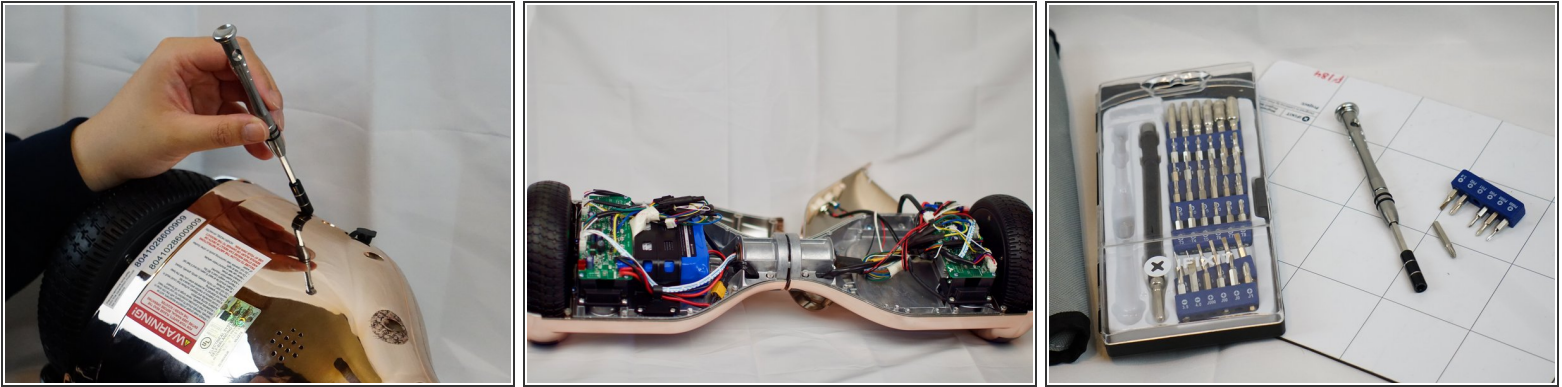
- [54 Bit Driver Kit](#) (1)



PARTS:

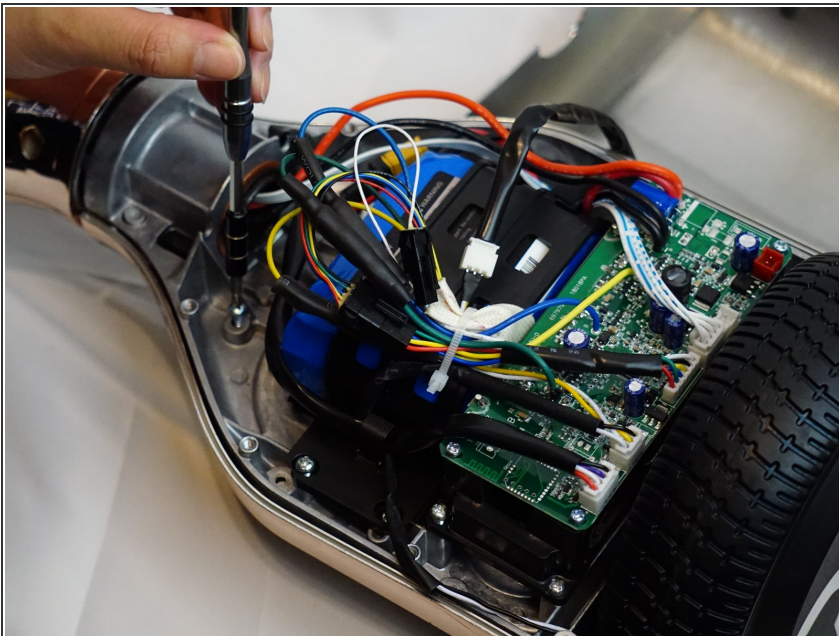
- [LED light](#) (1)

Step 1 — LED light



- Use screw driver to remove screws on the back of the hover board.
- The second image shows what the hover board would look like when the back shell is removed.
- Use Phillips #1 screwdriver from the 54 bit driver toolkit.

Step 2



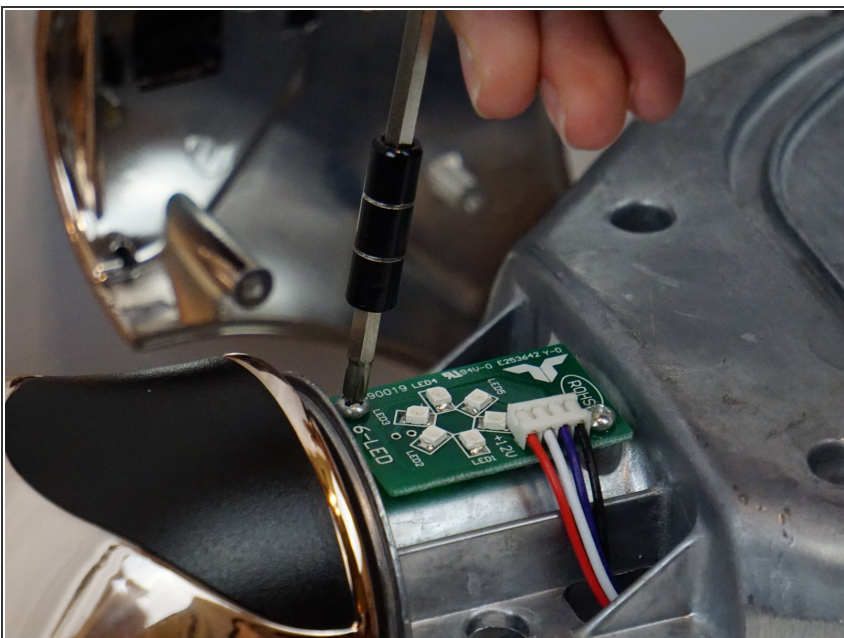
- After the back shell is removed, you need to remove the screws on the metal layer inside.
- Use Phillips #1 screwdriver from the 54 bit driver toolkit.

Step 3



- Once the screws are removed, you will be able to separate the upper shell and the metal layer inside like in the picture.
- Use Phillips #1 screwdriver from the 54 bit driver toolkit.

Step 4



- After the upper shell is removed, you can see a small green pad. This small green pad is the LED light.
- Unscrew the two screws using Phillips #1 screwdriver from the 54 bit driver toolkit, and you should be able to take this small green pad off.
- Once you have taken it off, put on a new LED light and screw the screws back on. Now, you have successfully replaced the LED light.

To reassemble your device, follow these instructions in reverse order.