



Hover-1 Matrix Pad Replacement

Replacing damaged pads for Hover-1 Matrix.

Written By: Jici Zhuang



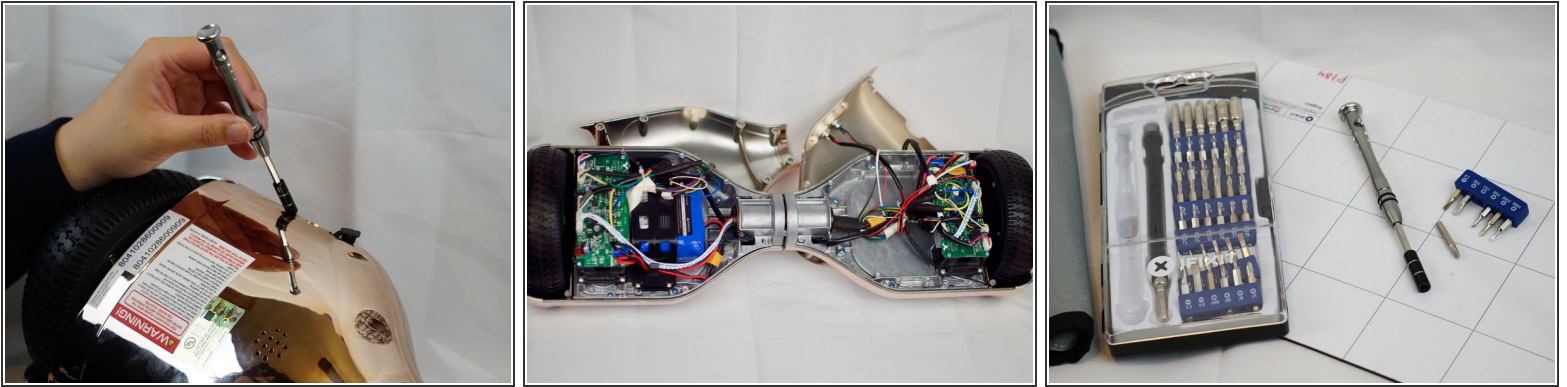
INTRODUCTION

The pads on Hover-1 Matrix are weight sensitive. When they sense weight, the hover board will start moving automatically. In order for the Hover-1 Matrix to move when there is a rider, over used pads must be replaced so the hover board is sensitive.

TOOLS:

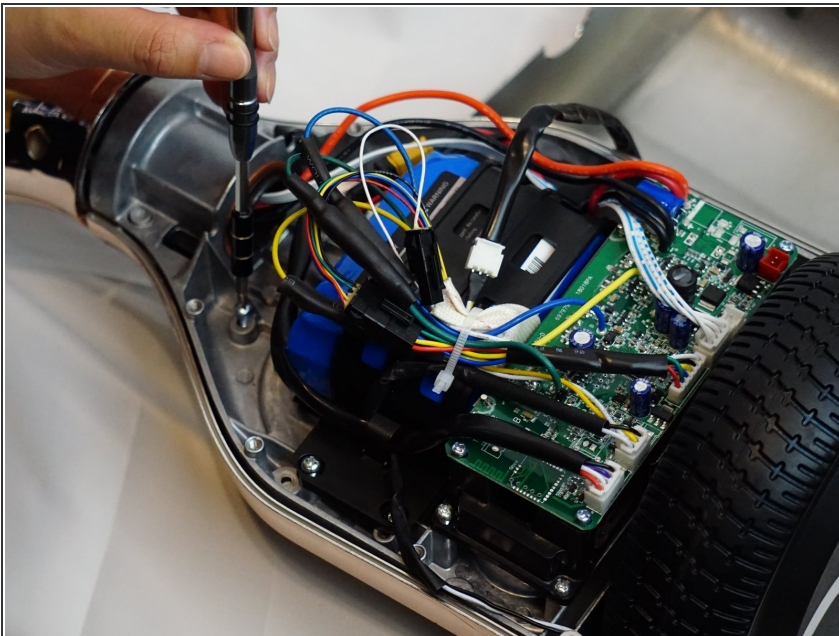
- [54 Bit Driver Kit](#) (1)

Step 1 — Pad



- Use screw driver to remove screws on the back of the hover board.
- The second image shows what the hover board would look like when the back shell is removed.
- Use Phillips #1 screwdriver from the 54 bit driver toolkit (shown in the third image).

Step 2



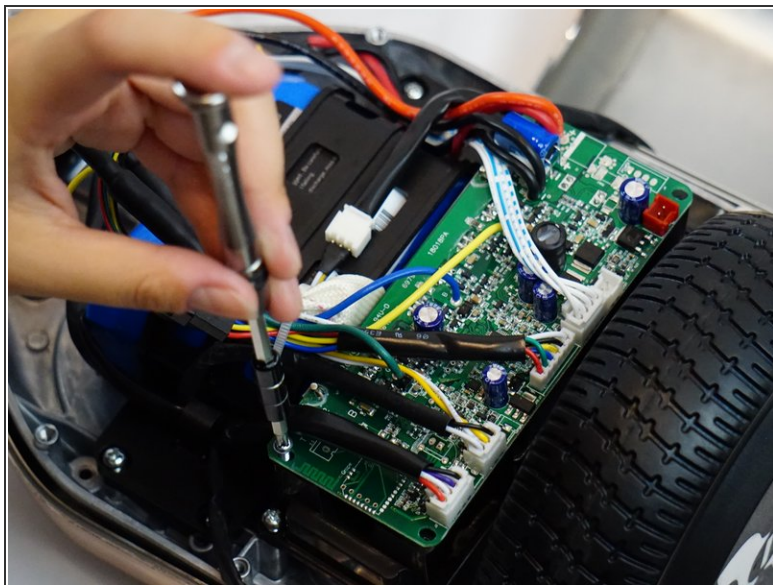
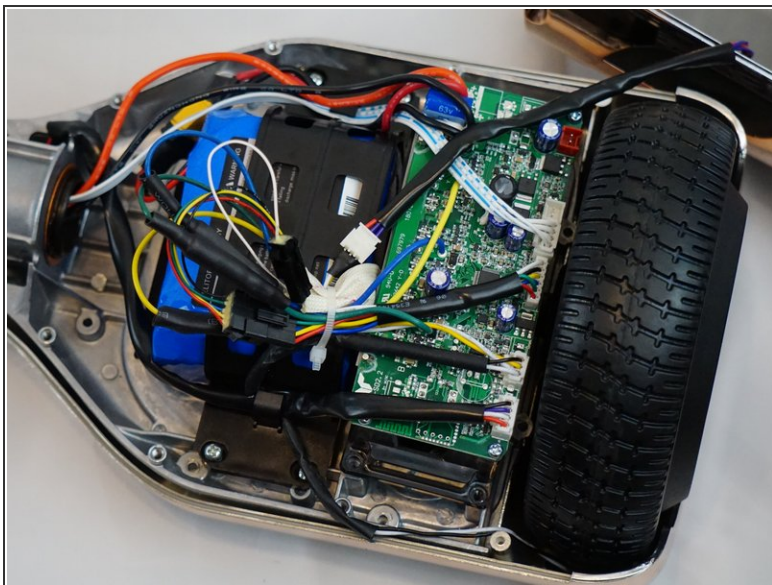
- Now, remove the screws on the metal layer inside.
- Use Phillips #1 screwdriver from the 54 bit driver toolkit.

Step 3



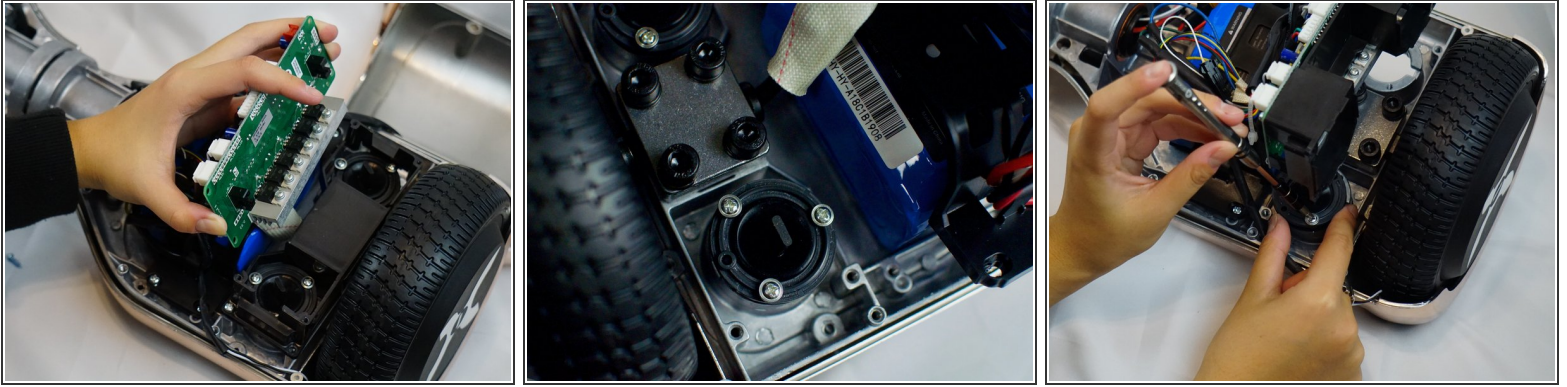
- Separate the upper shell and the metal layer inside like in the picture.

Step 4



- Identify the motherboard, which is the green pad shown in the picture.
- Unscrew the motherboard and take it off.
- There are cables attached to the motherboard so just move it out the way.
- Use Phillips #1 screwdriver from the 54 bit driver toolkit.

Step 5



- Move the motherboard to the other side like in picture 1.
- Identify two black rubber buttons (shown in the second picture).
- Unscrew the screws and remove the two rubber buttons.
- Use Phillips #1 screwdriver from the 54 bit driver toolkit.

Step 6



- Removing the rubber buttons in the previous step allows you to take the pad off.
- Now, you can take off the old pad and put on a new pad.

To reassemble your device, follow these instructions in reverse order.

