



Hover-1 Matrix Right Gyroscope Sensor Board Replacement

The guide is about how to replace the right gyroscope of the hoverboard.

Written By: Qingxi Liu



INTRODUCTION

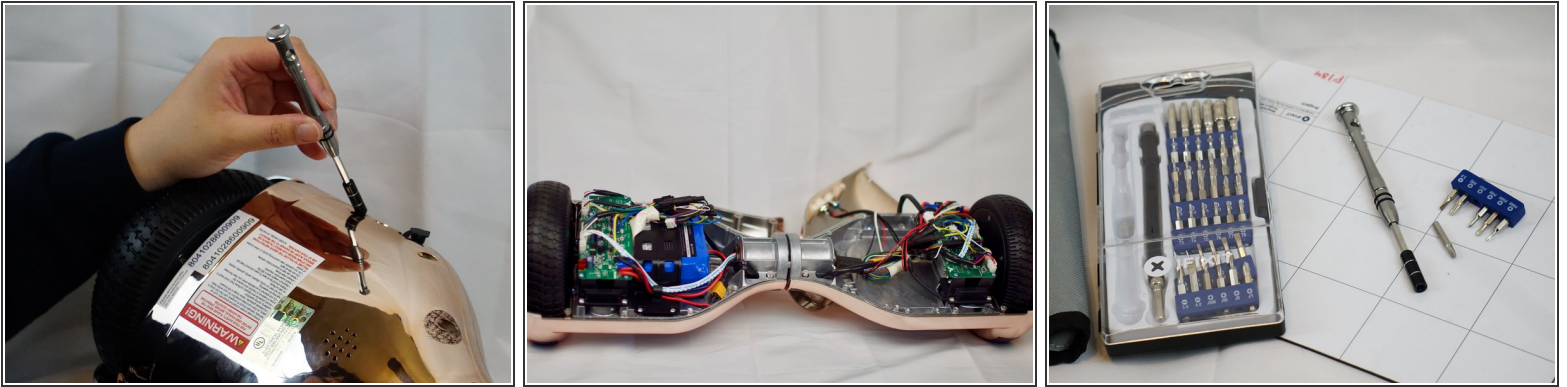
Gyroscopes help to control orientation. If it is hard to control hoverboard's orientation during driving, people can change the gyroscopes.



TOOLS:

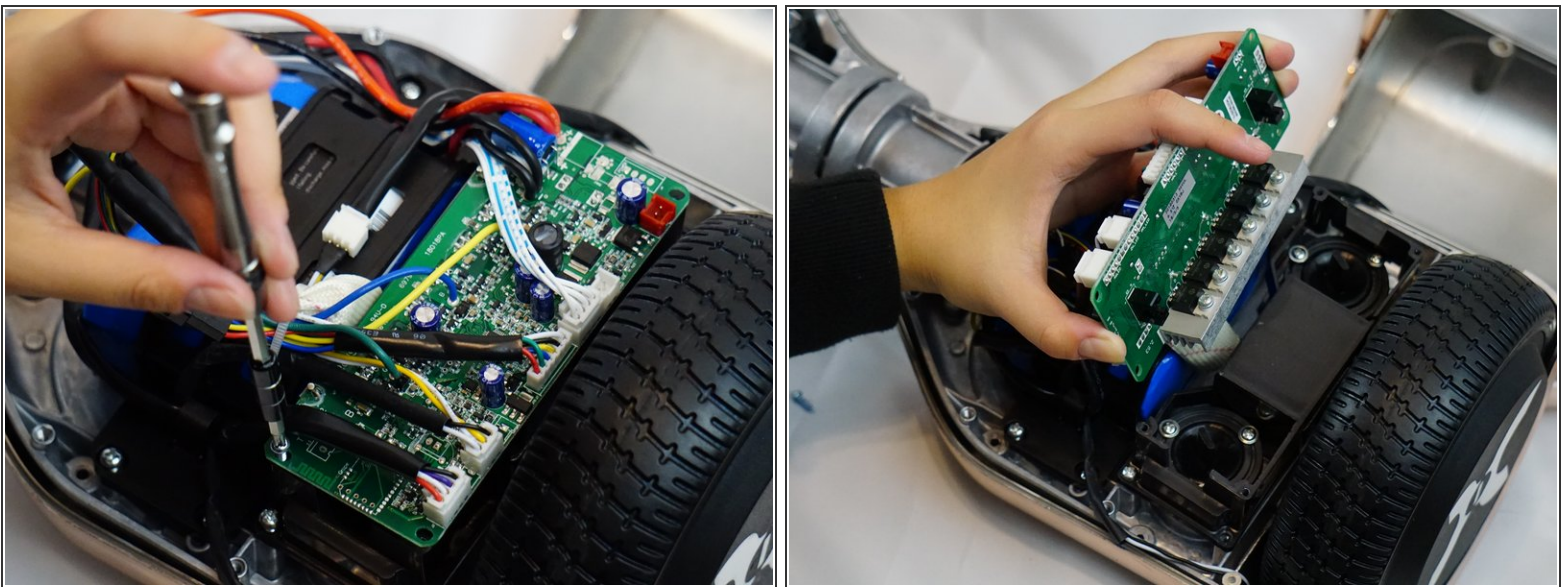
- [54 Bit Driver Kit](#) (1)
-

Step 1 — Right Gyroscope Sensor Board



- Use screw driver to remove screws on the back of the hover board and then remove the back shell as the second image shows. In the third image, there is screw driver we used from the 54 bit driver kit.

Step 2



- The gyroscopes is the green electric board at the end of both sides of the hover board. Use the screw driver to remove screws at the corner of the gyroscopes as the first image shows. Then, you can remove the whole board as the second image shows.

To reassemble your device, follow these instructions in reverse order.