



Hover-1 Nomad Charging Port Replacement

How to replace the charging port on your Hover-1 Nomad.

Written By: Samuel Frazee



INTRODUCTION

If your Nomad is not charging correctly, your charging port may be damaged. Follow this guide to replace the charging port in your Hover-1 Nomad.

TOOLS:

- [Phillips #2 Screwdriver](#) (1)
 - [Spudger](#) (1)
 - [Slip Joint Pliers](#) (1)
-

Step 1 — Outer Shell



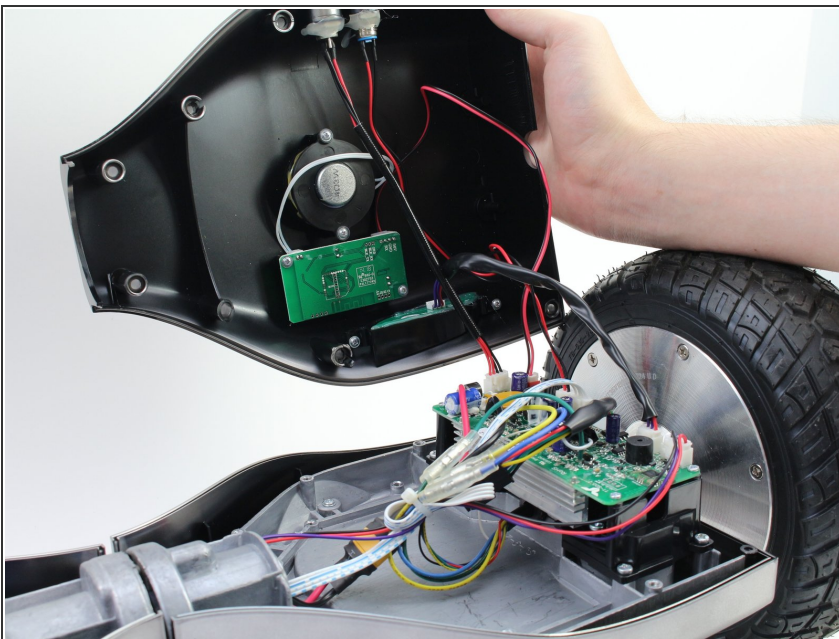
- Break the two warranty stickers by poking a screwdriver through them or peeling them off.
- Remove the following twenty screws by rotating the screwdriver counterclockwise:
 - Eight 16.2mm Phillips #2 screws
 - Eight 15mm Phillips #2 screws
 - Four 19.1mm Phillips #2 screws
- ⓘ The holes containing most of the screws are deep and narrow. A screwdriver with interchangeable bits will not be able to reach them.
- ✦ Do not over-tighten the screws during reassembly. Over-tightened screws can crack the plastic channels holding the shell to the frame of the hoverboard.

Step 2



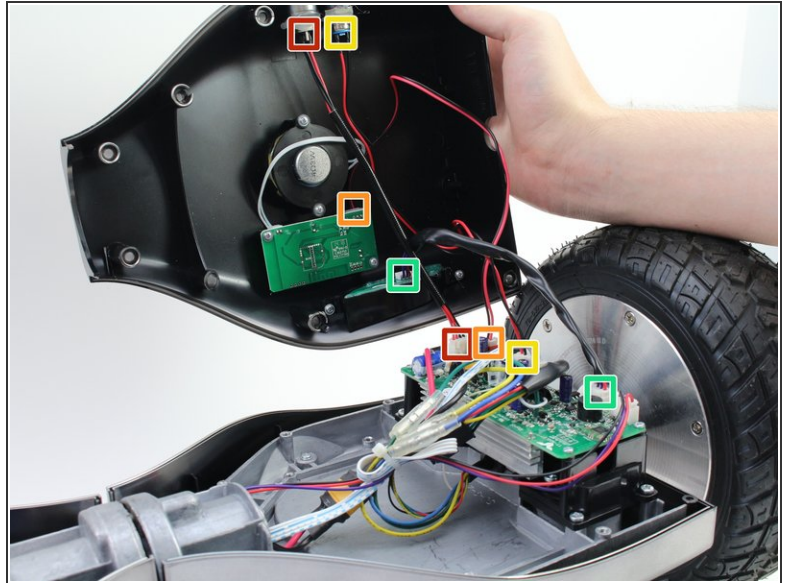
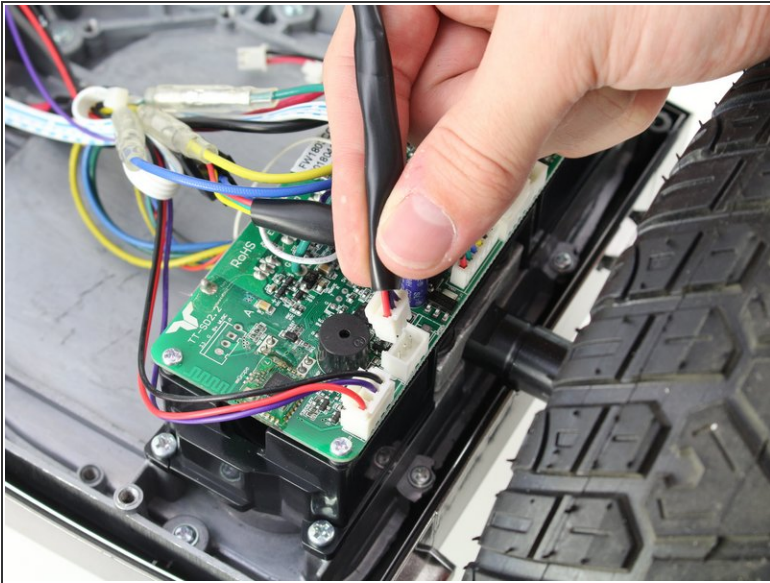
- Use a nylon spudger to pry the metal handle away from the outer shell.
- Rotate the metal handle toward the center of the hoverboard to unlock the plate from the retaining clips.
- Lift the hoverboard off the metal handle.
- Repeat for the handle on the other side of the hoverboard.

Step 3



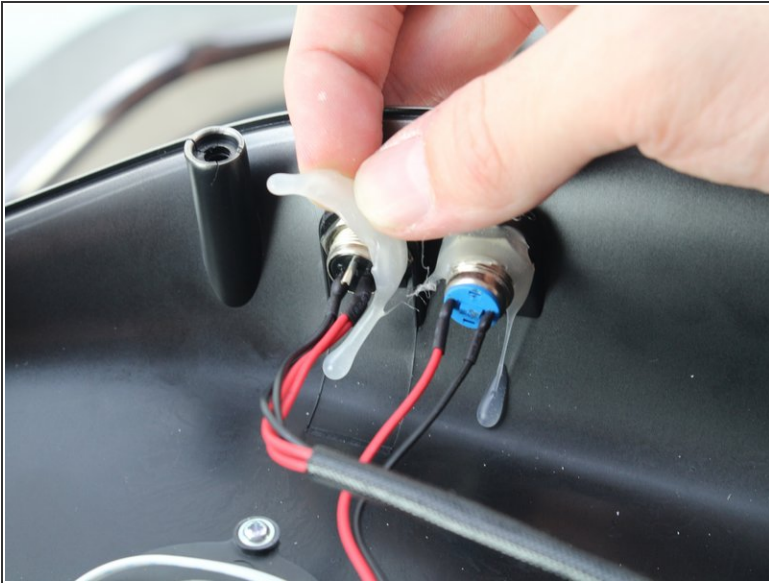
- Lift the plastic cover on each side up and away from the device.
- ⚠ Multiple wires connect the circuit boards to the outer shell. Remove the shell gently to avoid damaging the wires or components.

Step 4



- Disconnect the following wires by pinching the connector tabs and pulling the plugs out of the connectors:
 - Charging port wires
 - Speaker assembly wires
 - Power button wires
 - Headlight wires
- ⓘ Only the headlight wires need to be disconnected from the other circuit board.
- ✦ Ensure the wires are connected to the correct ports on the circuit board during reassembly.

Step 5 — Charging Port



- Peel off the glue around the charging port.
- Unscrew the hexagonal nut around the charging port by rotating the nut counterclockwise with a pair of pliers.

Step 6



- Feed the wire and connector through the removed nut and pull the charging port out through the hole in the outer casing.
- ⓘ Pulling the connector through the nut is a tight fit. Try turning the plug sideways to fit the connector through the nut.

To reassemble your device, follow these instructions in reverse order.