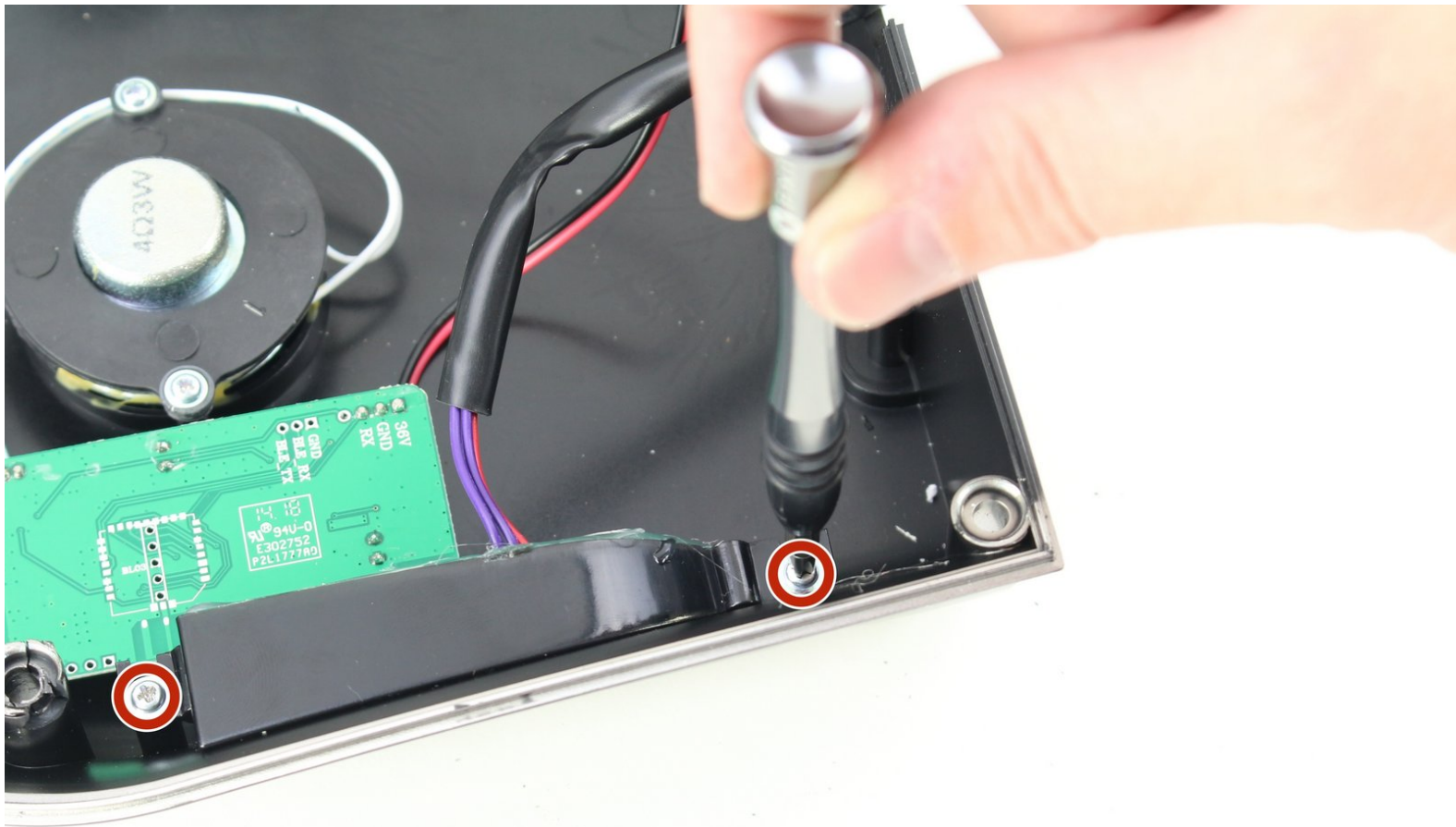




Hover-1 Nomad LED Headlights Replacement

How to replace the LED headlights in your Hover-1 Nomad.

Written By: Samuel Frazee



INTRODUCTION

If the LED headlights on your Nomad do not light up when the hoverboard is powered on, your headlights may be damaged. Follow this guide to replace the headlights in the Hover-1 Nomad.

TOOLS:

- [Phillips #2 Screwdriver](#) (1)
 - [Spudger](#) (1)
 - [Phillips #1 Screwdriver](#) (1)
-

Step 1 — Outer Shell



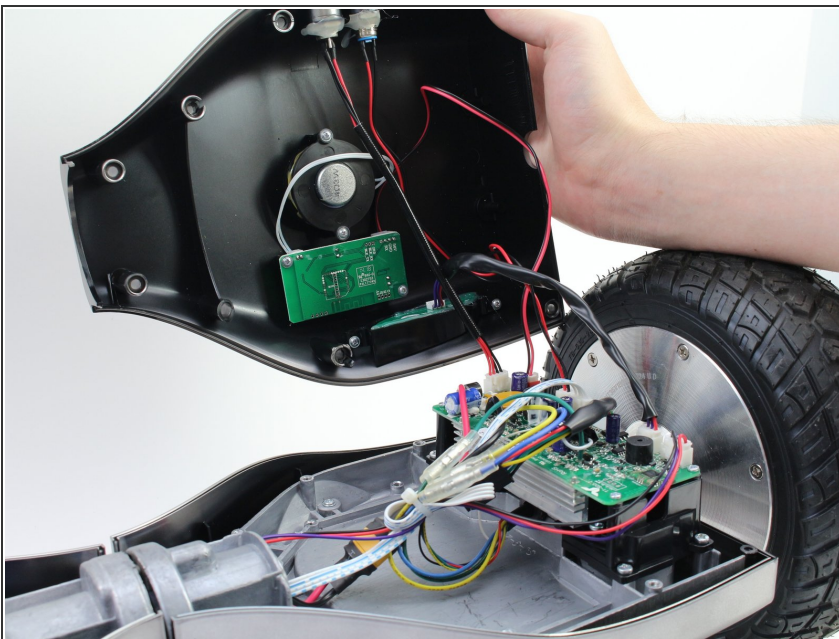
- Break the two warranty stickers by poking a screwdriver through them or peeling them off.
- Remove the following twenty screws by rotating the screwdriver counterclockwise:
 - Eight 16.2mm Phillips #2 screws
 - Eight 15mm Phillips #2 screws
 - Four 19.1mm Phillips #2 screws
- ⓘ The holes containing most of the screws are deep and narrow. A screwdriver with interchangeable bits will not be able to reach them.
- ✦ Do not over-tighten the screws during reassembly. Over-tightened screws can crack the plastic channels holding the shell to the frame of the hoverboard.

Step 2



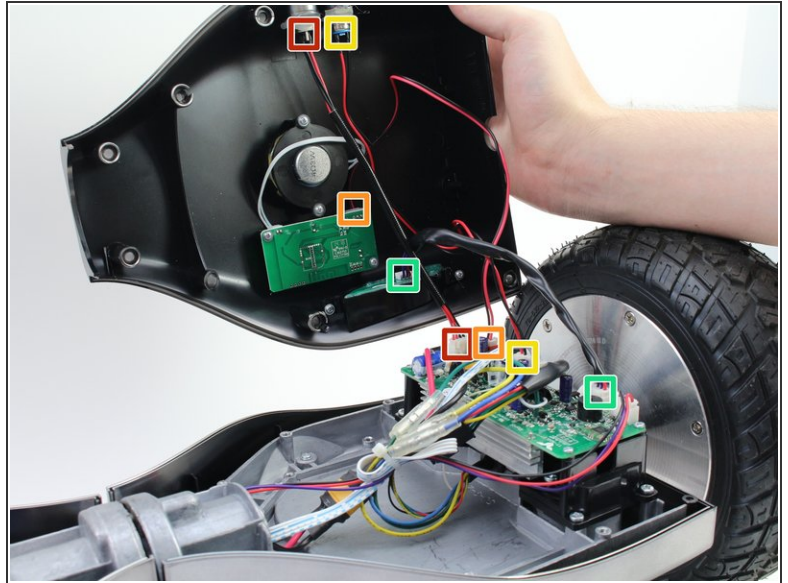
- Use a nylon spudger to pry the metal handle away from the outer shell.
- Rotate the metal handle toward the center of the hoverboard to unlock the plate from the retaining clips.
- Lift the hoverboard off the metal handle.
- Repeat for the handle on the other side of the hoverboard.

Step 3



- Lift the plastic cover on each side up and away from the device.
- ⚠ Multiple wires connect the circuit boards to the outer shell. Remove the shell gently to avoid damaging the wires or components.

Step 4



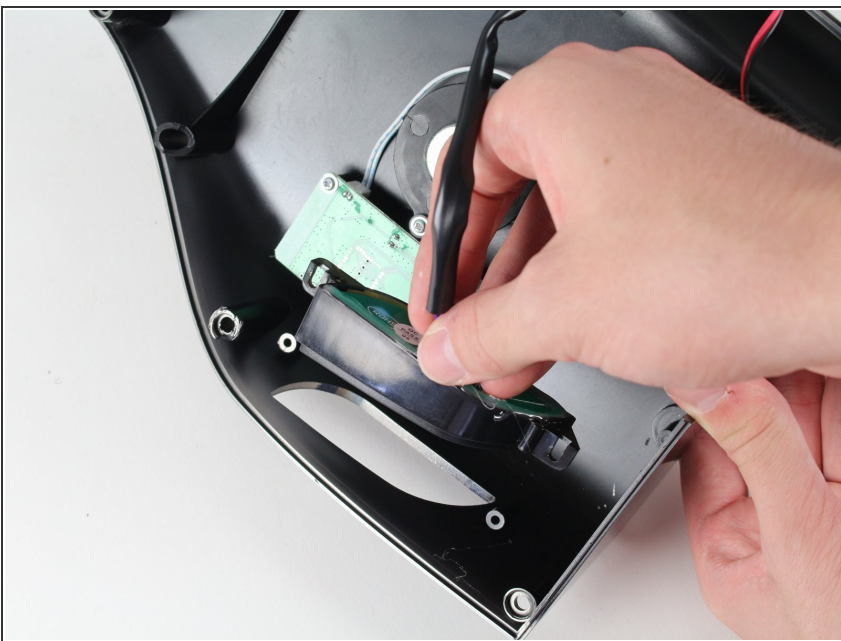
- Disconnect the following wires by pinching the connector tabs and pulling the plugs out of the connectors:
 - Charging port wires
 - Speaker assembly wires
 - Power button wires
 - Headlight wires
- ⓘ Only the headlight wires need to be disconnected from the other circuit board.
- ✦ Ensure the wires are connected to the correct ports on the circuit board during reassembly.

Step 5 — LED Headlights



- Remove the two 13mm Phillips #1 screws by rotating the screwdriver counterclockwise.
- ⓘ Repeat on the other side of the hoverboard to remove the other headlight.

Step 6



- Pull the headlight up and off the outer shell.
- ⓘ Repeat on the other side of the hoverboard to remove the other headlight.

To reassemble your device, follow these instructions in reverse order.