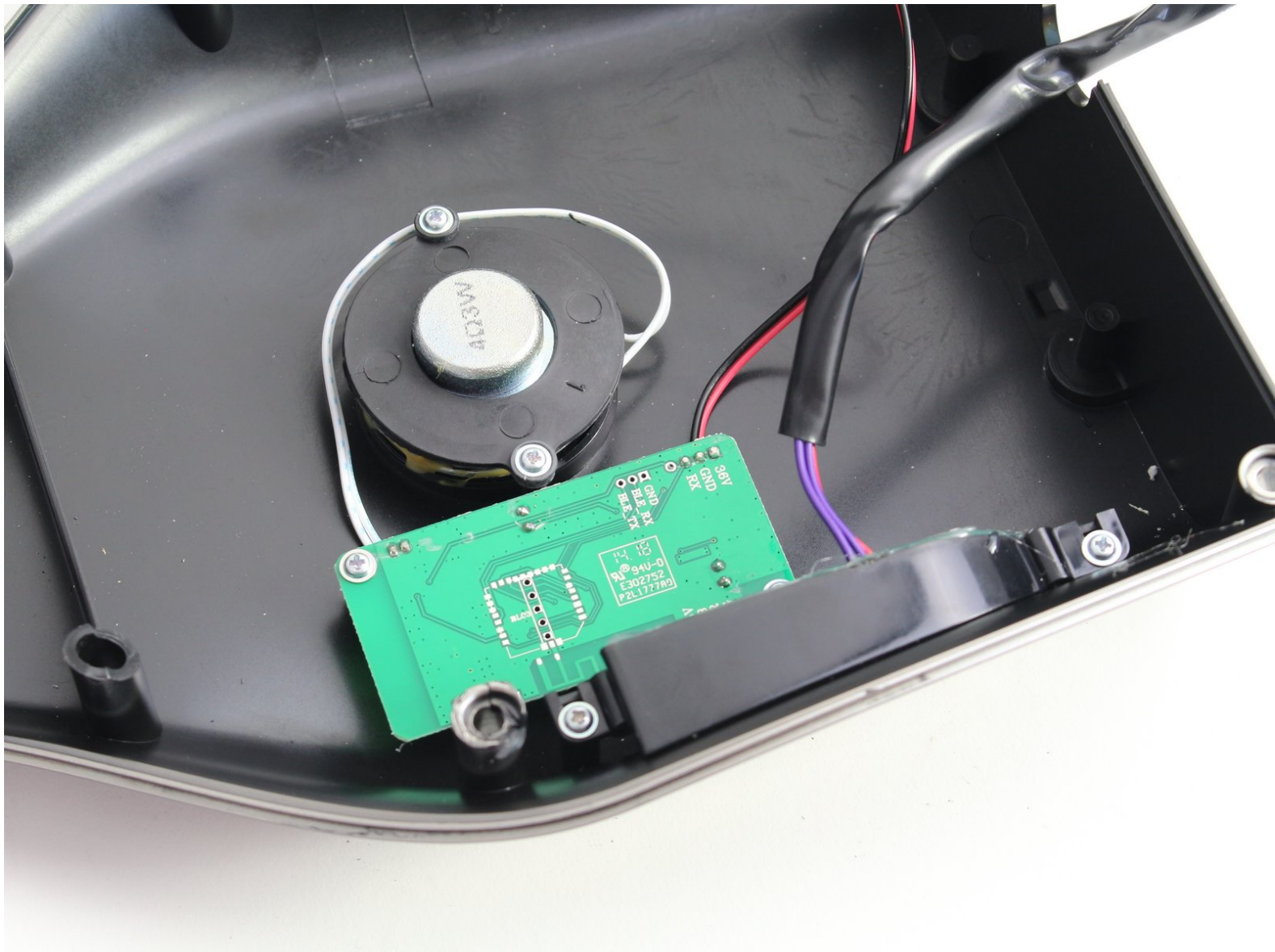




Hover-1 Nomad Speaker Assembly Replacement

How to repair the speaker assembly on your Hover-1 Nomad.

Written By: Samuel Frazee



INTRODUCTION

If your Nomad doesn't play audio even while booting up, your speaker assembly may be damaged. Follow this guide to replace the speaker assembly in your Hover-1 Nomad.



TOOLS:

- [Phillips #2 Screwdriver](#) (1)
 - [Phillips #1 Screwdriver](#) (1)
 - [Spudger](#) (1)
-

Step 1 — Outer Shell



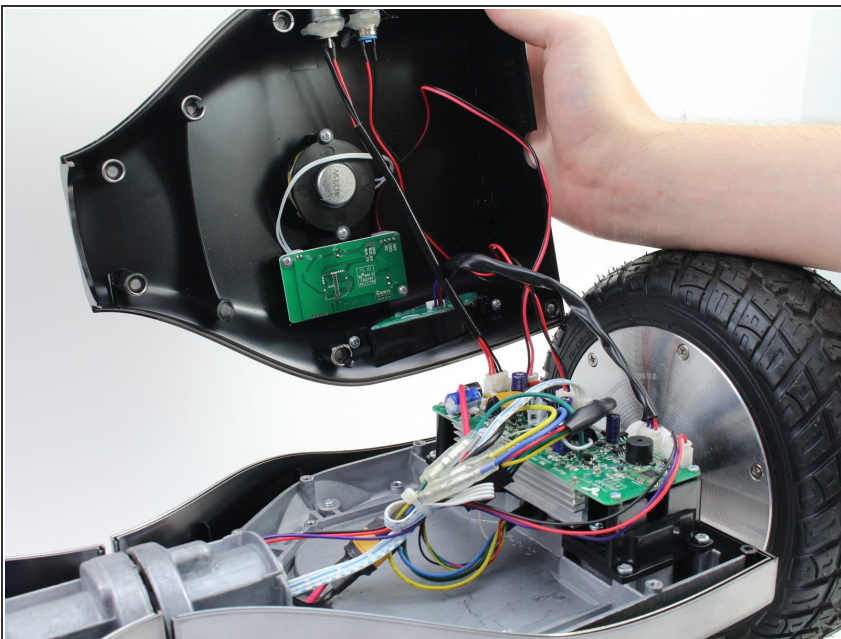
- Break the two warranty stickers by poking a screwdriver through them or peeling them off.
- Remove the following twenty screws by rotating the screwdriver counterclockwise:
 - Eight 16.2mm Phillips #2 screws
 - Eight 15mm Phillips #2 screws
 - Four 19.1mm Phillips #2 screws
- ⓘ The holes containing most of the screws are deep and narrow. A screwdriver with interchangeable bits will not be able to reach them.
- ✦ Do not over-tighten the screws during reassembly. Over-tightened screws can crack the plastic channels holding the shell to the frame of the hoverboard.

Step 2



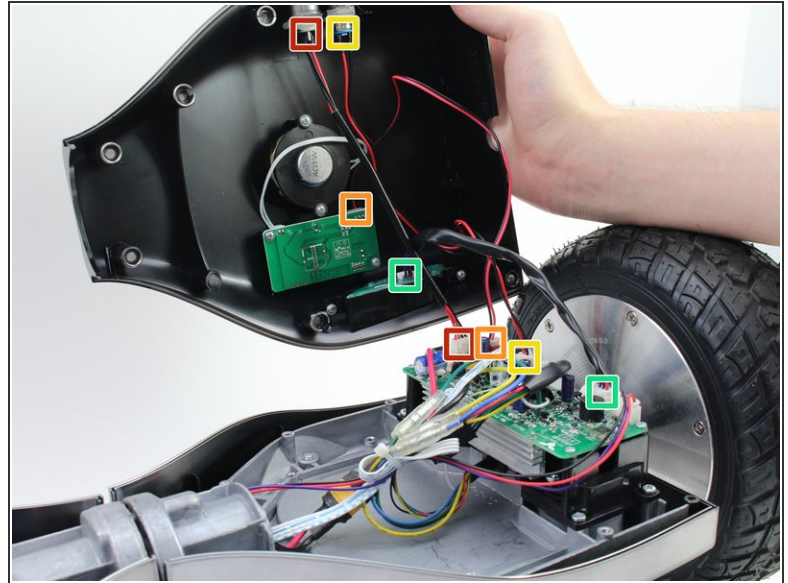
- Use a nylon spudger to pry the metal handle away from the outer shell.
- Rotate the metal handle toward the center of the hoverboard to unlock the plate from the retaining clips.
- Lift the hoverboard off the metal handle.
- Repeat for the handle on the other side of the hoverboard.

Step 3



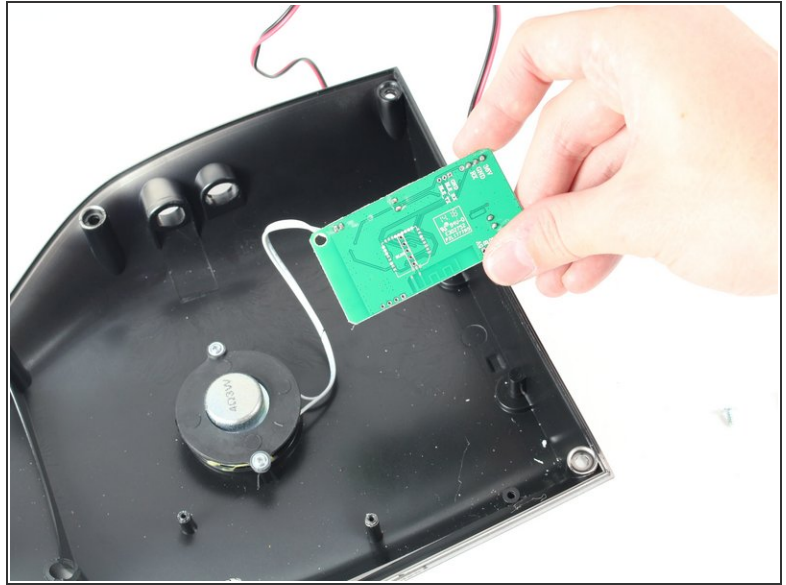
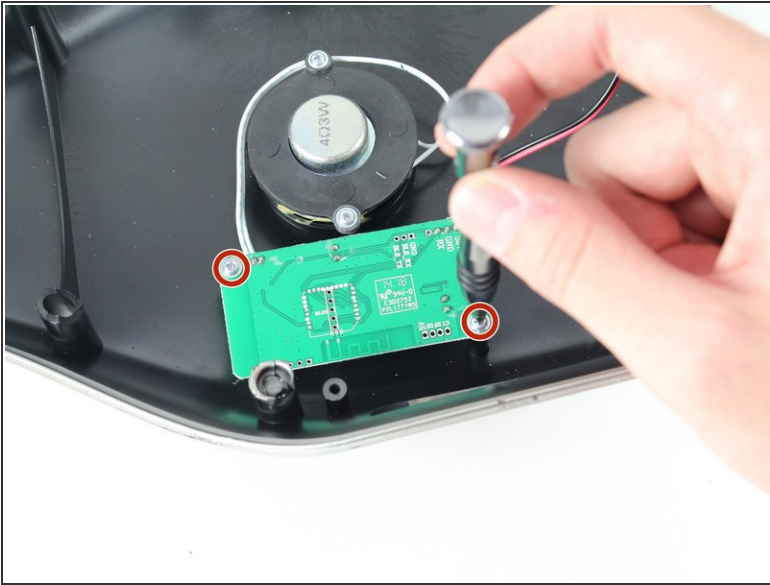
- Lift the plastic cover on each side up and away from the device.
- ⚠ Multiple wires connect the circuit boards to the outer shell. Remove the shell gently to avoid damaging the wires or components.

Step 4



- Disconnect the following wires by pinching the connector tabs and pulling the plugs out of the connectors:
 - Charging port wires
 - Speaker assembly wires
 - Power button wires
 - Headlight wires
- ⓘ Only the headlight wires need to be disconnected from the other circuit board.
- ✦ Ensure the wires are connected to the correct ports on the circuit board during reassembly.

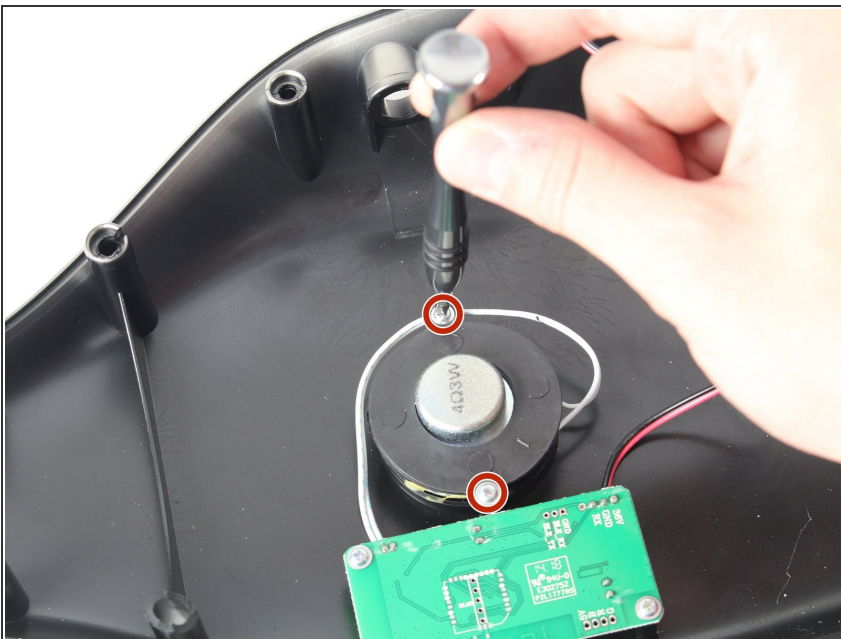
Step 5 — Speaker Assembly



- Remove the two 13mm Phillips #1 screws in the corners of the speaker assembly circuit board.

i You cannot fully disconnect the circuit board from the speaker. Set it aside for now.

Step 6



- Remove the two 13mm Phillips #1 screws fastening the speaker retention bracket to the shell.

Step 7



- Lift the speaker retention bracket up and off the speaker.

Step 8



- Break the glue connecting the speaker to the outer shell by prying the speaker up with a nylon spudger.
- Lift the speaker off the outer shell.

Step 9



- Use a nylon spudger to scrape the fabric speaker cover off the outer shell.
- Peel the fabric off the outer shell.
- ☑ New speakers and fabric will already be glued together. Apply the whole assembly to the outer shell at once during reassembly.

To reassemble your device, follow these instructions in reverse order.