



Hover-1 Titan Left Gyroscope Replacement

How to replace broken or malfunctioning gyroscopes in the Hover-1 Titan.

Written By: Jessica Ouyang



INTRODUCTION

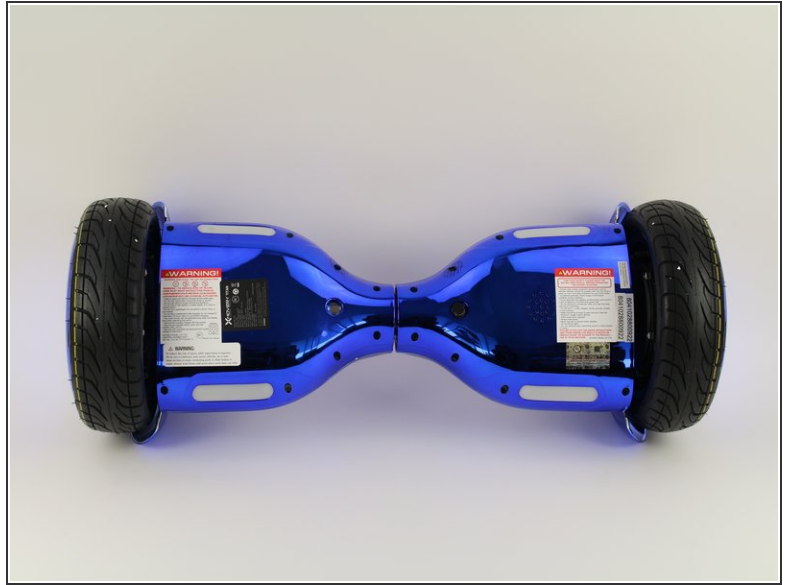
If your hoverboard will not turn on, retain a charge, move, or spin properly, use this guide to help replace your Hover-1 Titan gyroscope/motherboard.



TOOLS:

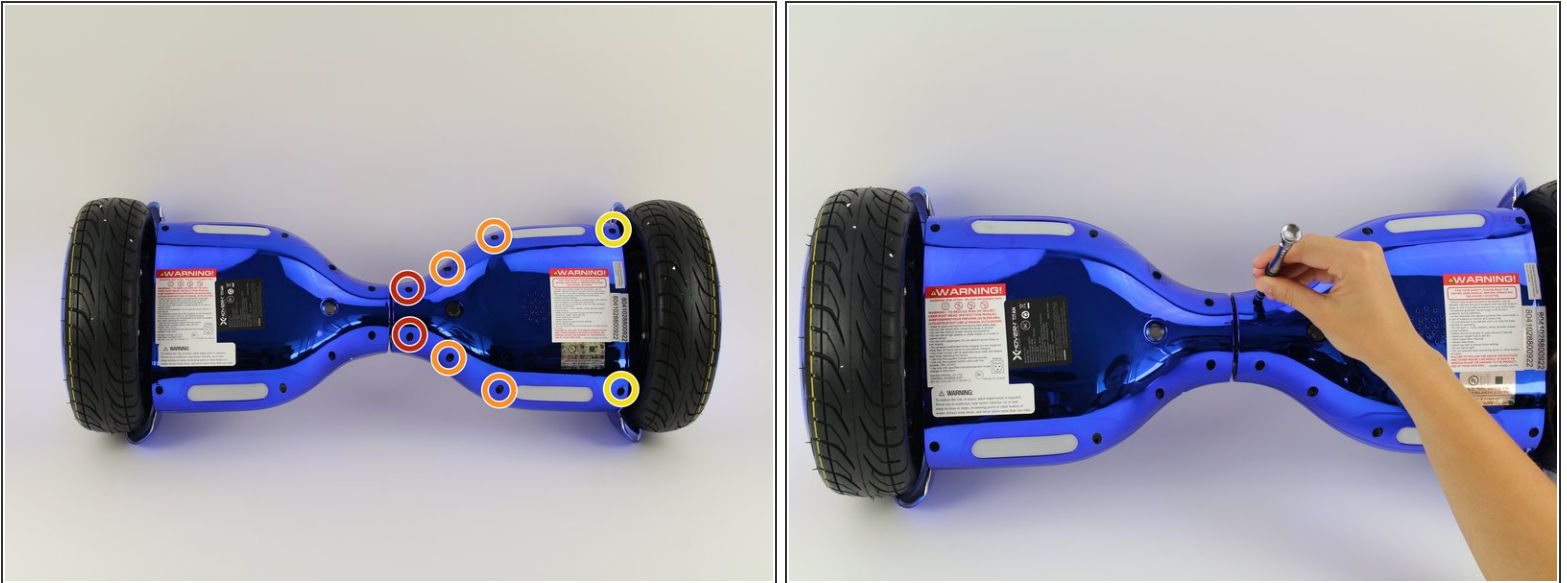
- [Phillips #1 Screwdriver](#) (1)
-

Step 1 — Bottom Left Panel



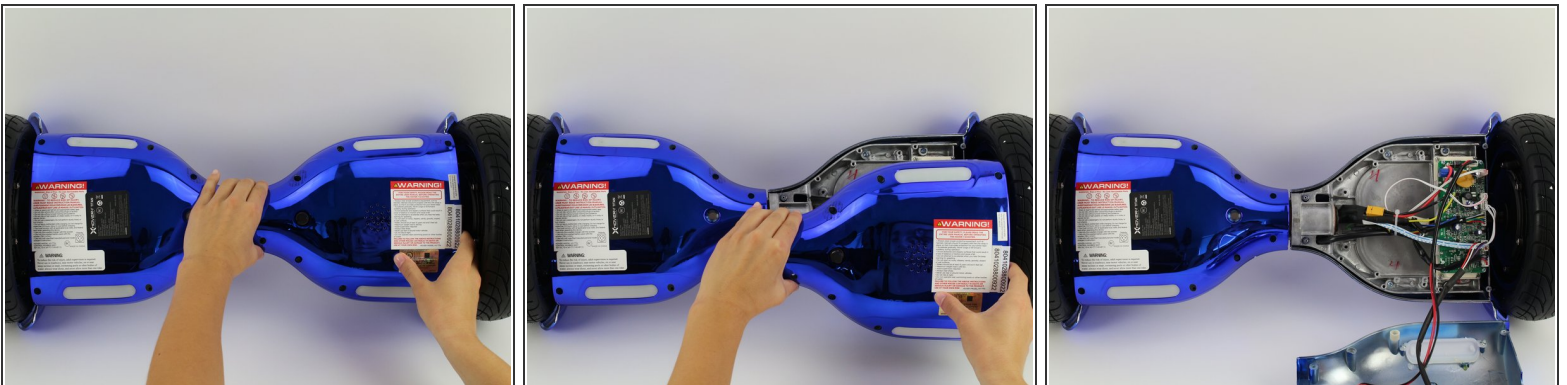
- Flip the hoverboard so the bottom is facing up.
- ⓘ The left side is the side that has the charge port. There is also an "L" on the metal plate underneath the wires.

Step 2



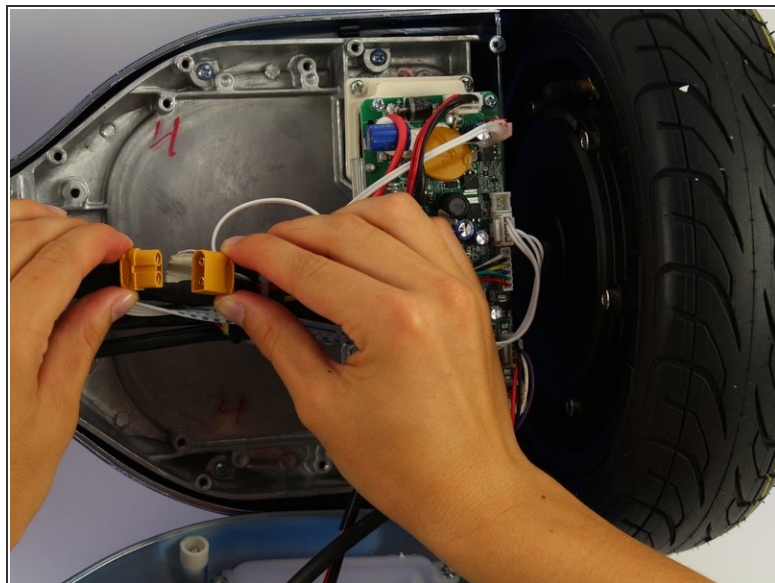
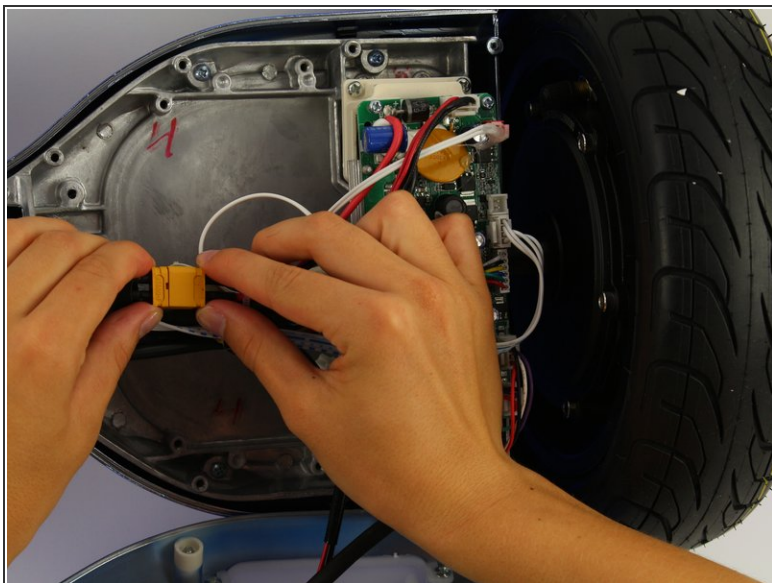
- Using a Phillips #1 screwdriver, remove the two 14 mm screws located closest to the center of the hoverboard.
- Using a Phillips #1 screwdriver, remove the four 12 mm screws located in the middle of the panel.
- Using a Phillips #1 screwdriver, remove two 15 mm screws located closest to the wheel.

Step 3



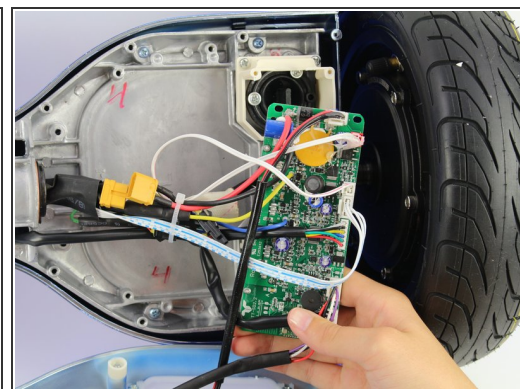
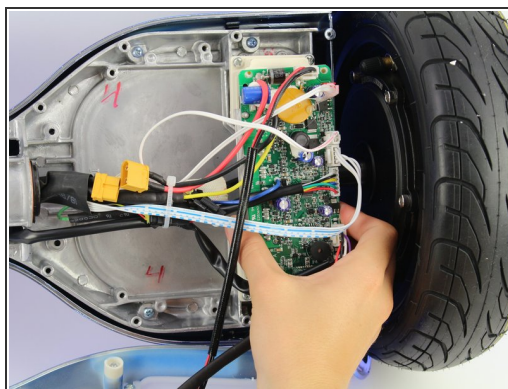
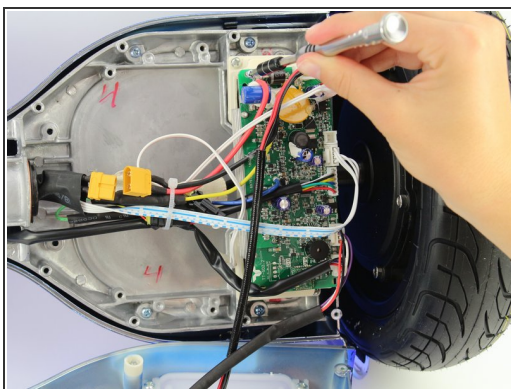
- Grip the bottom left panel and lift up to remove.

Step 4 — Left Gyroscope and Motherboard



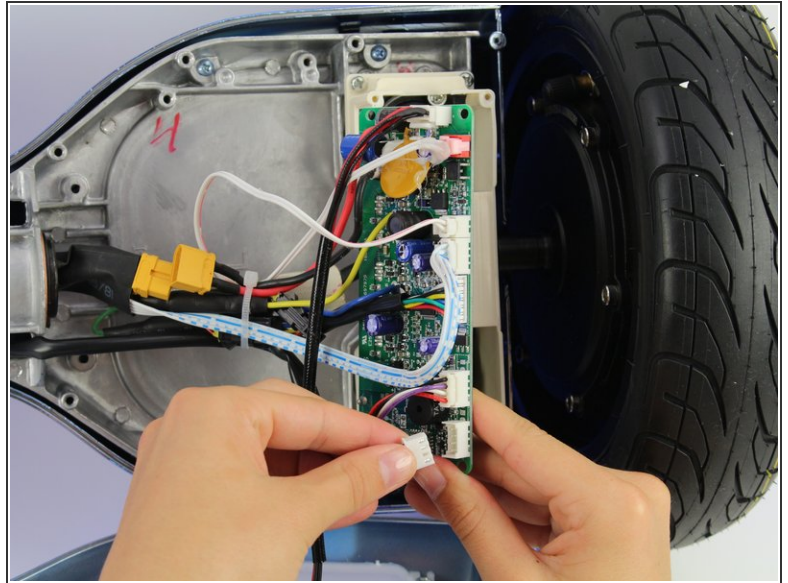
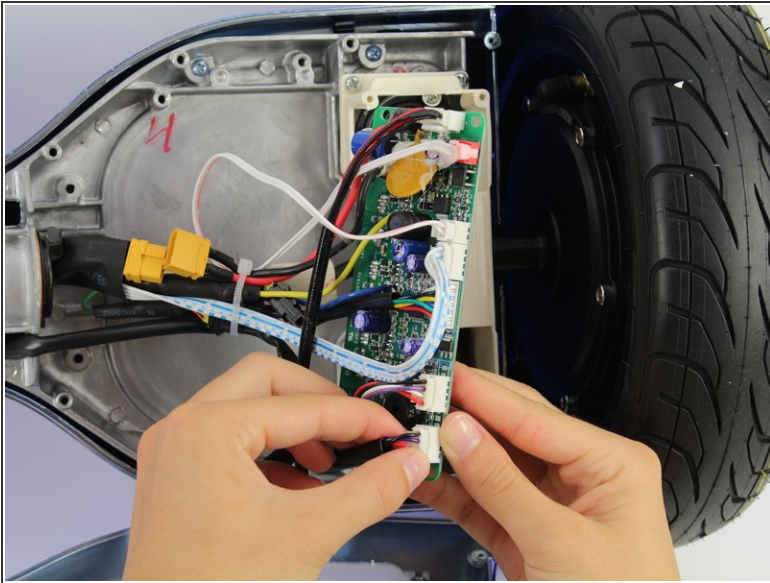
- Unplug the battery from the gyroscope by holding the yellow connector and pulling apart.

Step 5



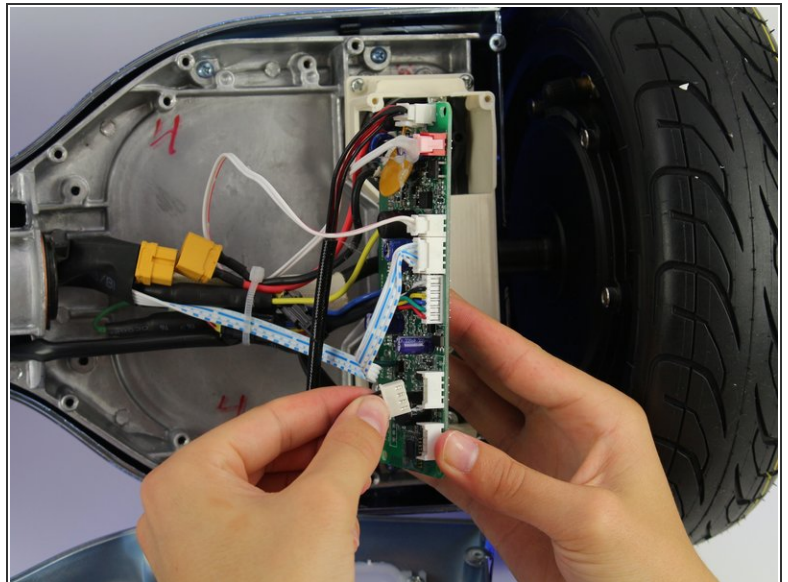
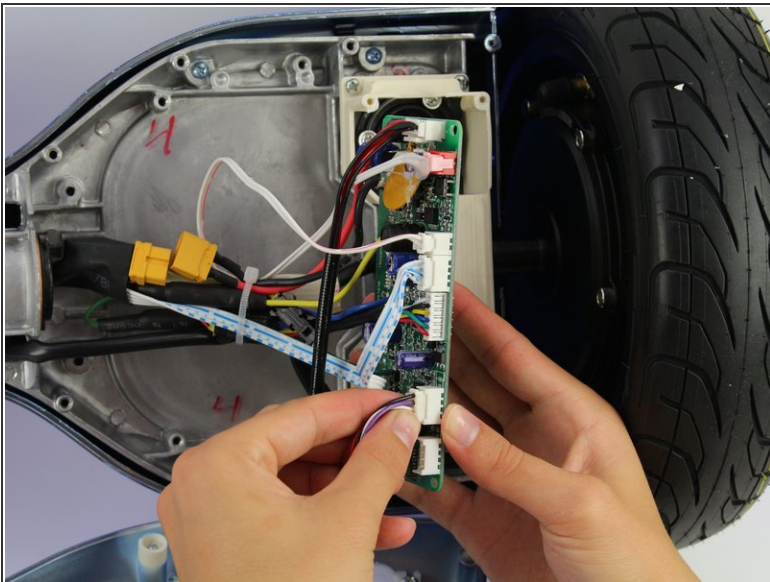
- Remove four 12 mm Phillips #1 head screws from the corners of the green gyroscope/motherboard.

Step 6



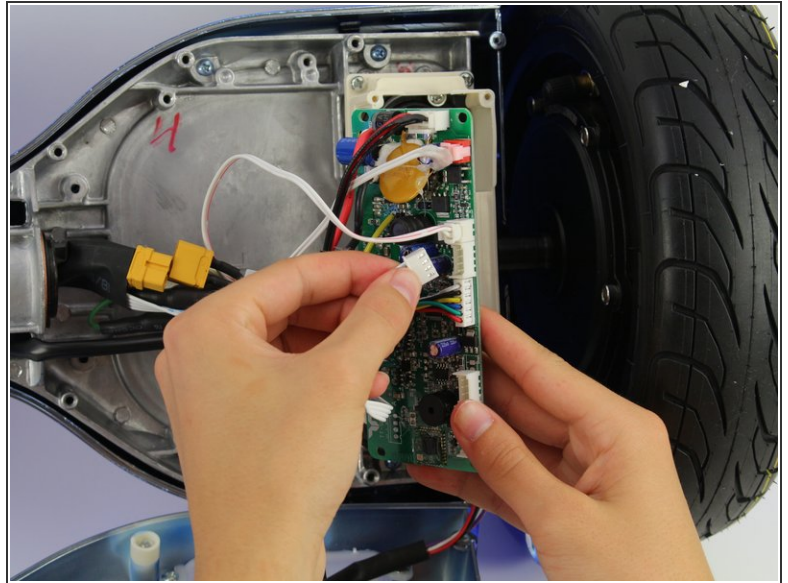
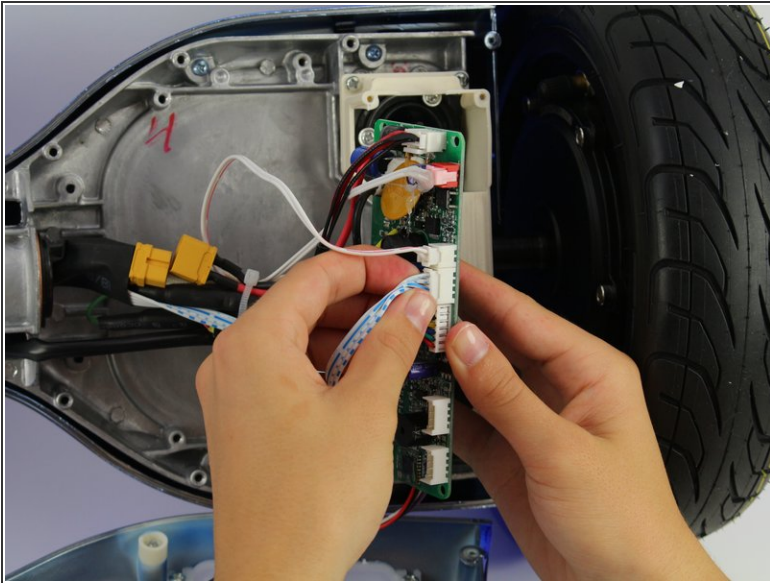
- Unplug the bottom right connector by squeezing it and pulling it away from the board.

Step 7



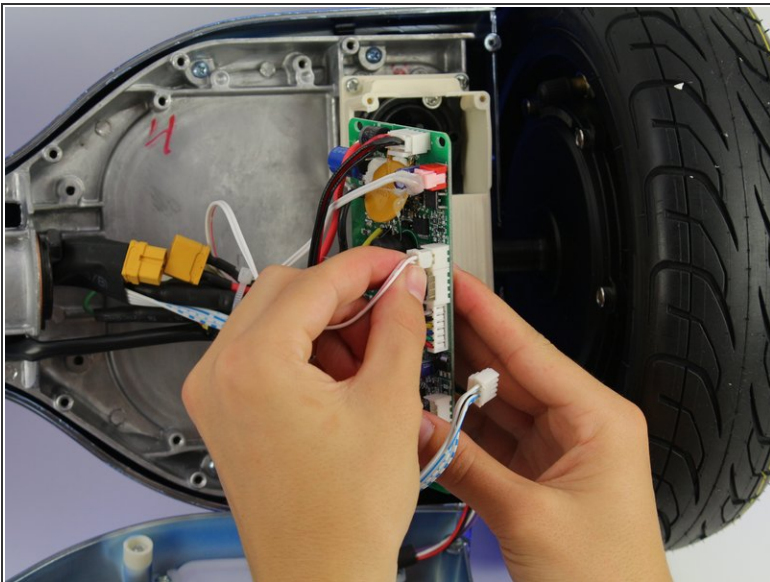
- Unplug the light connector by squeezing it and pulling away from the board.

Step 8



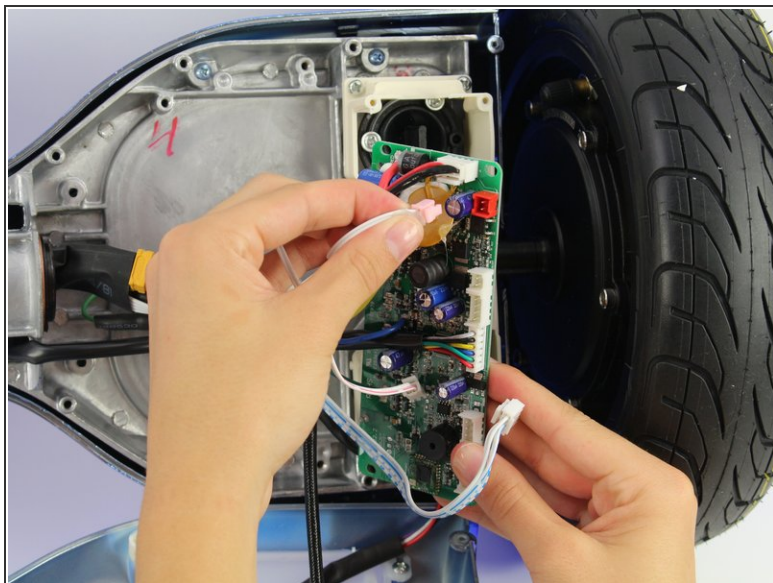
- Unplug the blue and white wires by squeezing the connector and pulling away from the board.

Step 9



- Unplug the small white connector by squeezing it and pulling away from the board.

Step 10



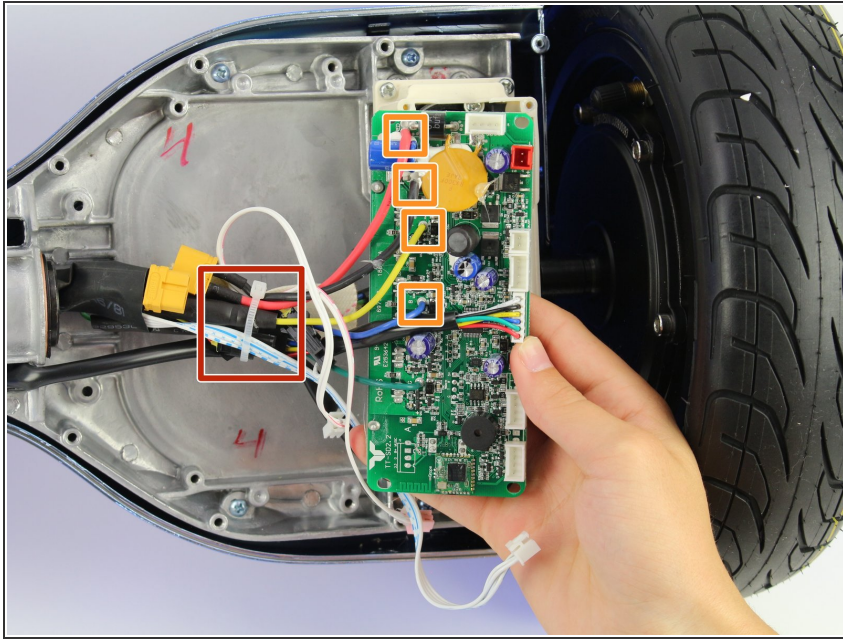
- Unplug the plug in the red connector.
- ⓘ The red plug is glued to the board, so this step will require extra force.

Step 11



- Unplug the charging cable connector by squeezing it and pulling it away from the board.

Step 12



- Cut the cable tie.
- Unplug the remaining wires.
- ⓘ The connectors for the remaining wires are in the rubber covers.

To reassemble your device, follow these instructions in reverse order.