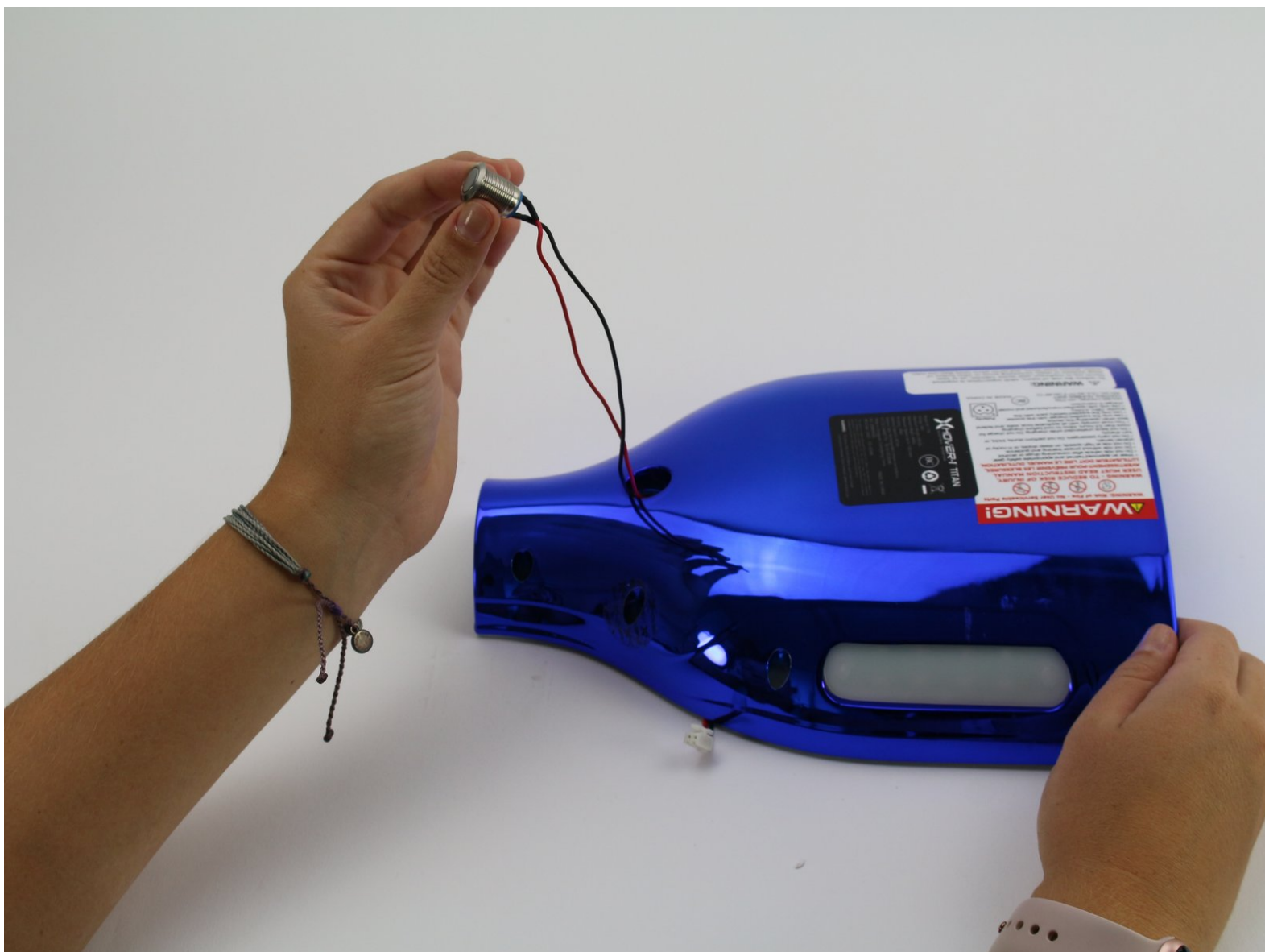




Hover-1 Titan Power Button Replacement

How to replace an old or malfunctioning power button in Hover-1 Titan.

Written By: Alexander Pham



INTRODUCTION

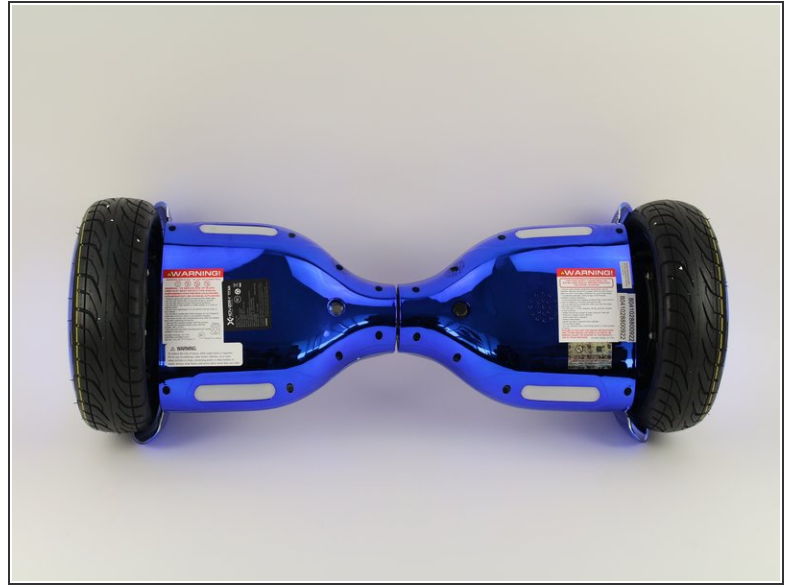
If your hoverboard will not turn on, follow this guide to replace the power button.



TOOLS:

- [Phillips #1 Screwdriver](#) (1)
 - [14mm Wrench](#) (1)
-

Step 1 — Bottom Right Panel



- Flip the hoverboard so the bottom is facing up.
- ⓘ The right side is the side that has the power button. There is also an "R" on the metal plate underneath the battery.

Step 2



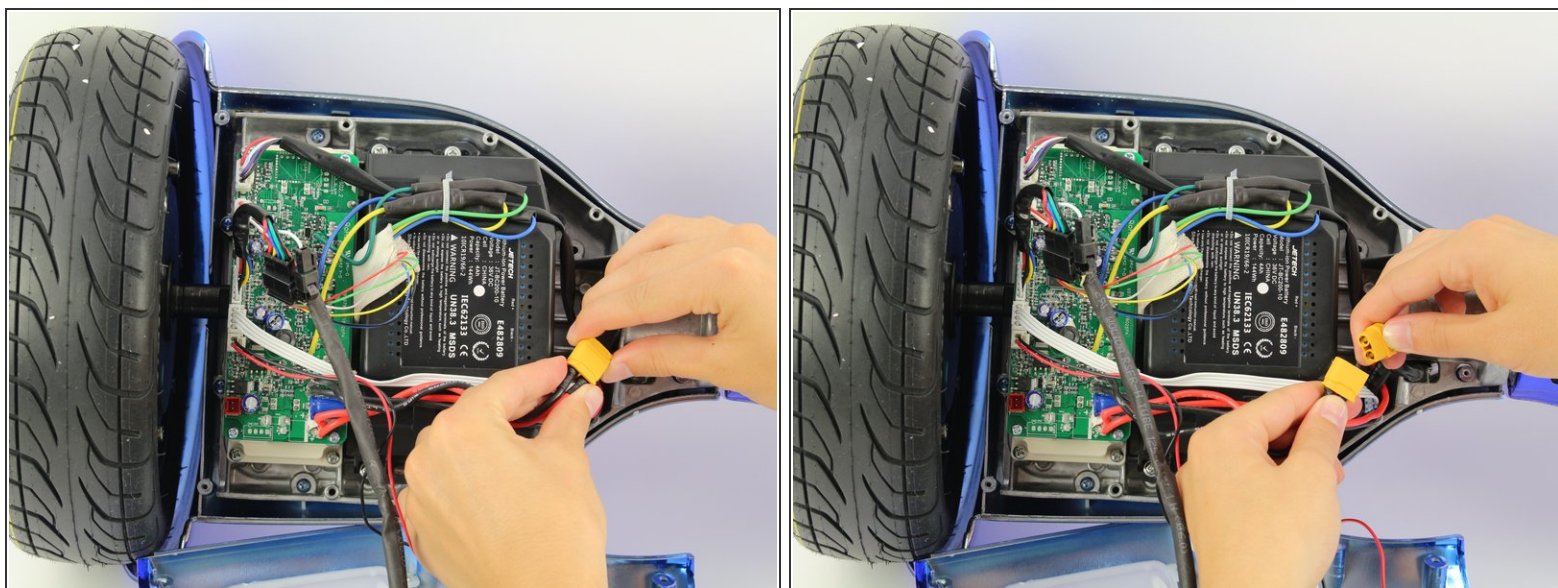
- Using a Phillips #1 screwdriver, remove the two 14 mm screws closest to the center of the hoverboard.
- Using a Phillips #1 screwdriver, remove the four 12 mm screws located in the middle of the panel.
- Using a Phillips #1 screwdriver, remove the two 15 mm screws located closest to the wheel.

Step 3



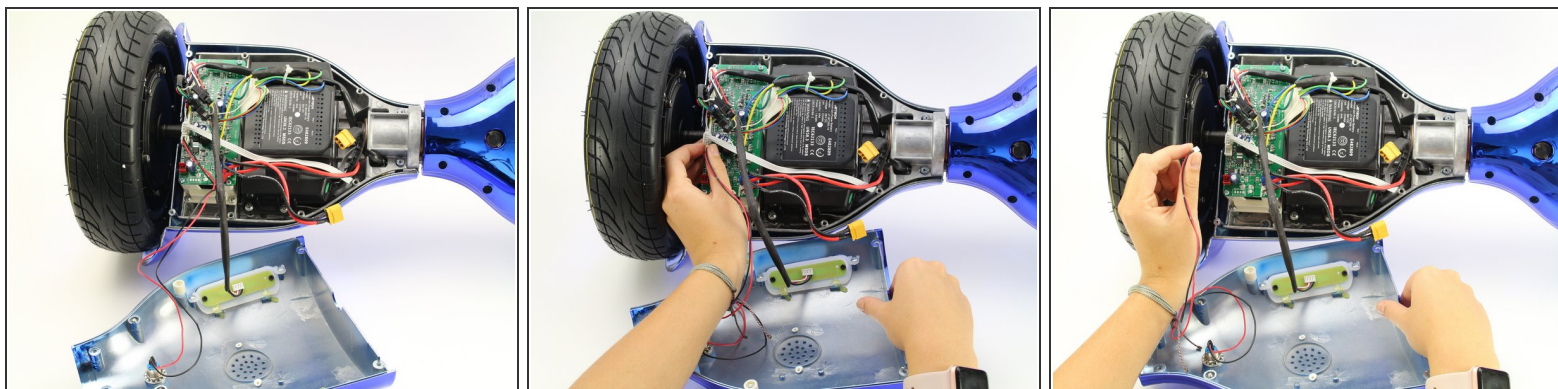
- Grip the bottom right panel and lift to remove it.

Step 4 — Power Button



- Disconnect the battery by holding the yellow connectors and pulling apart.

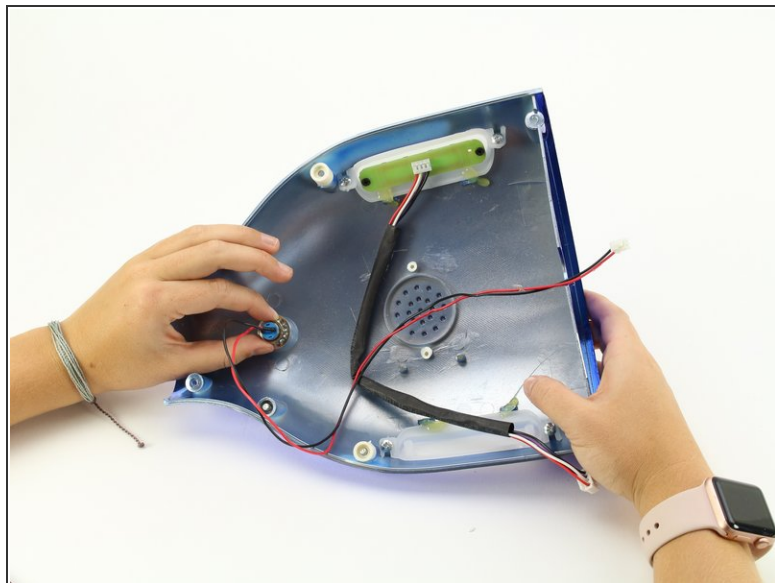
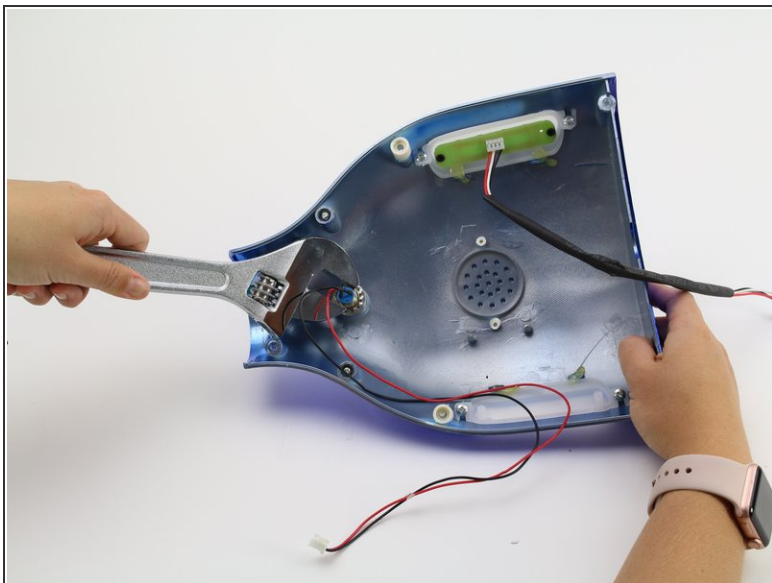
Step 5



- Unplug the red and black power button connector on the motherboard by squeezing the connector and pulling away from the board.

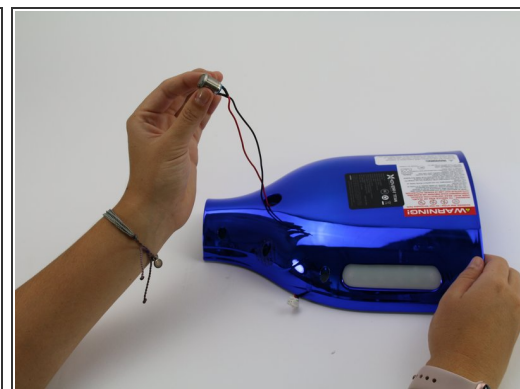
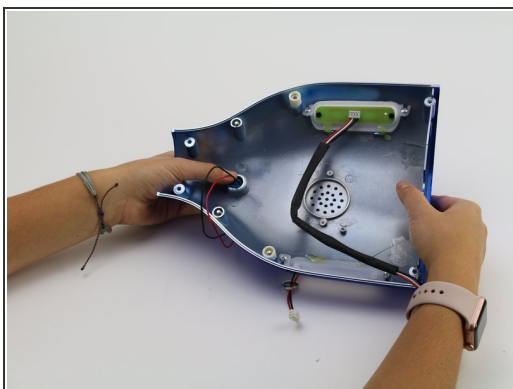
 You can also unplug the light connector to free up your work space.

Step 6



- Use an adjustable wrench to remove the 14 mm nut holding the button in the shell.

Step 7



- Pull the power button out of the panel.
- Replace the power button.

To reassemble your device, follow these instructions in reverse order.