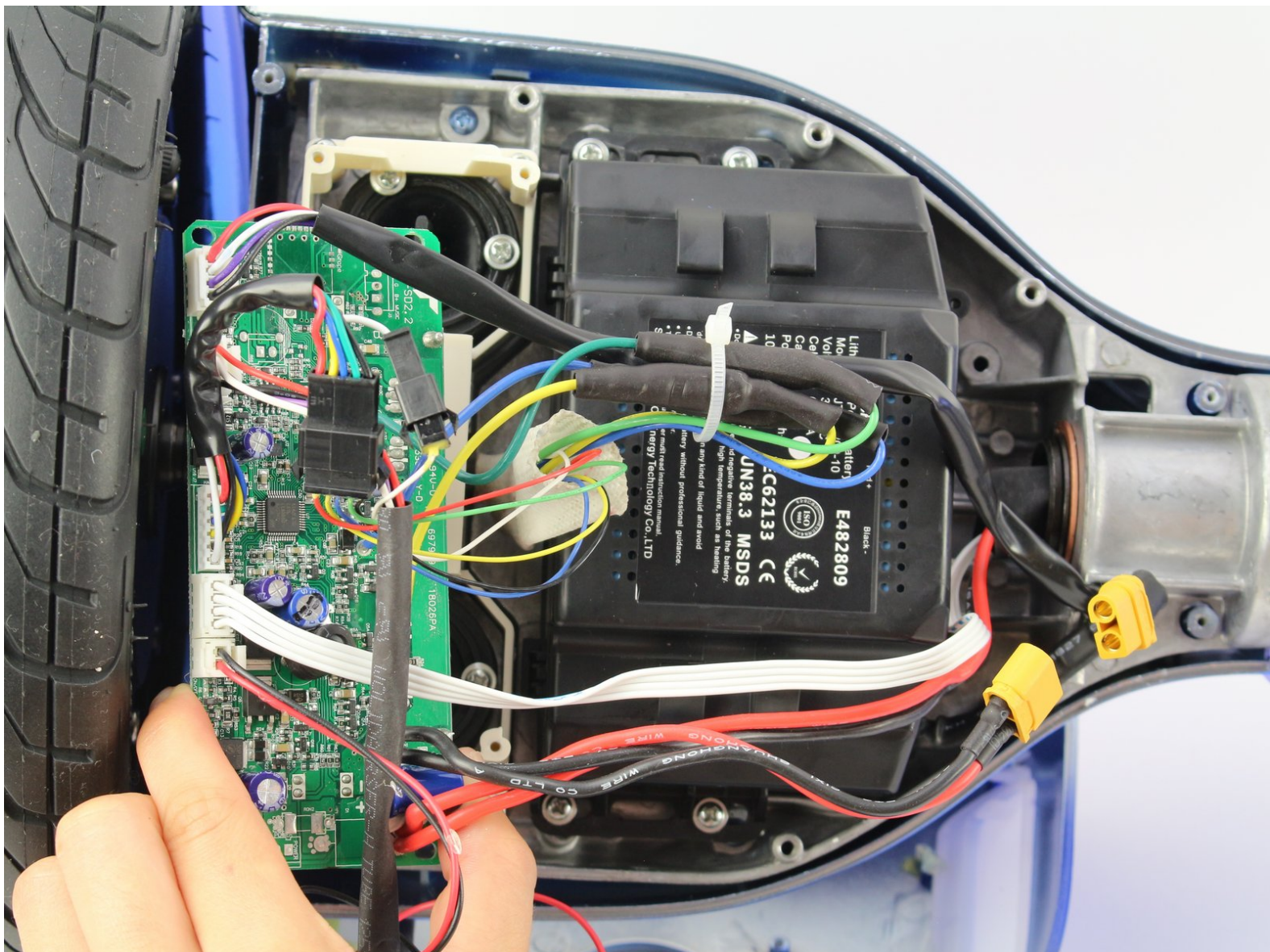




# Hover-1 Titan Right Gyroscope Replacement

How to replace a faulty or malfunctioning gyroscope on the Hover-1 Titan.

Written By: Jessica Ouyang



---

## INTRODUCTION

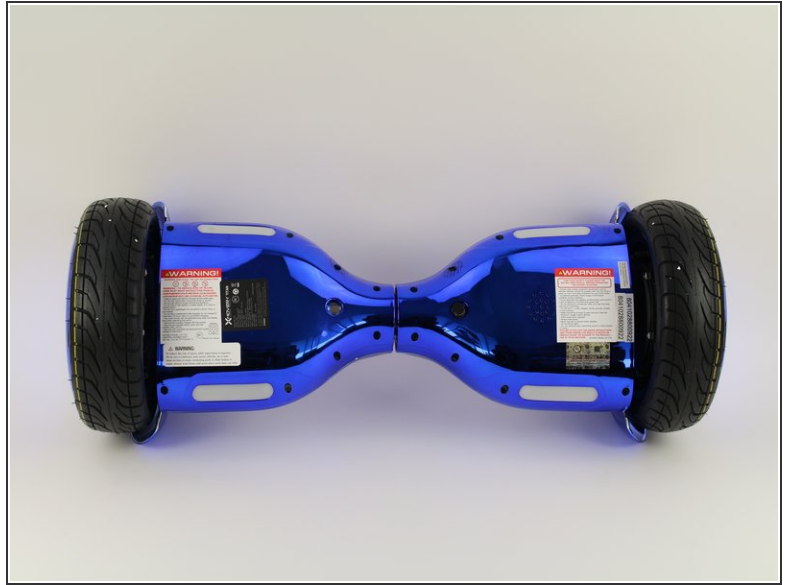
If your hoverboard will not turn on, retain a charge, move, or spin properly, use this guide to help replace your Hover-1 Titan gyroscope/motherboard.



### TOOLS:

- [Phillips #1 Screwdriver](#) (1)
-

## Step 1 — Bottom Right Panel



- Flip the hoverboard so the bottom is facing up.
- ⓘ The right side is the side that has the power button. There is also an "R" on the metal plate underneath the battery.



## Step 2



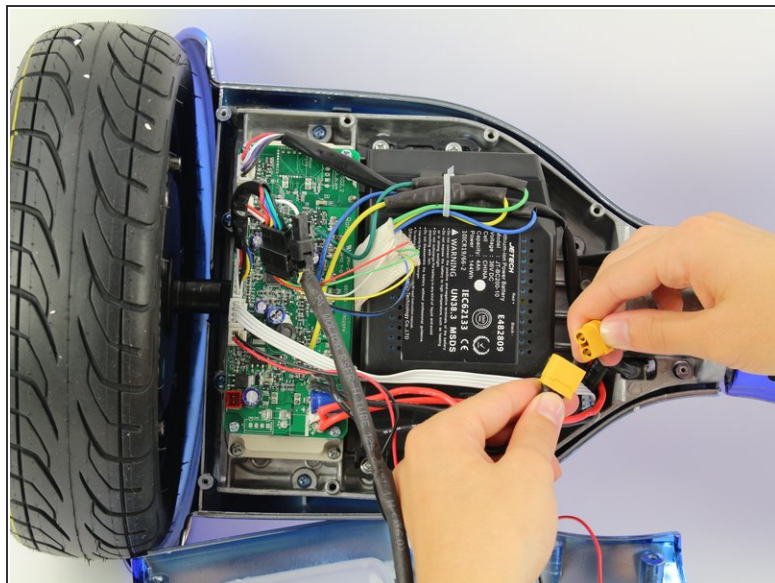
- Using a Phillips #1 screwdriver, remove the two 14 mm screws closest to the center of the hoverboard.
- Using a Phillips #1 screwdriver, remove the four 12 mm screws located in the middle of the panel.
- Using a Phillips #1 screwdriver, remove the two 15 mm screws located closest to the wheel.

## Step 3



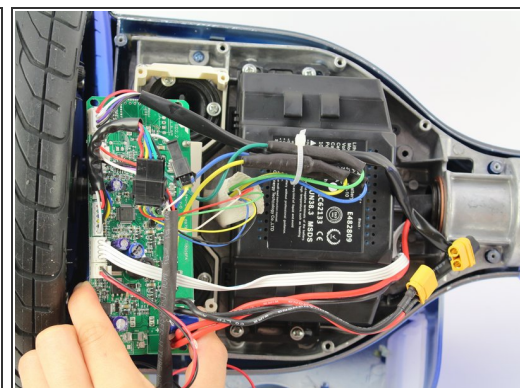
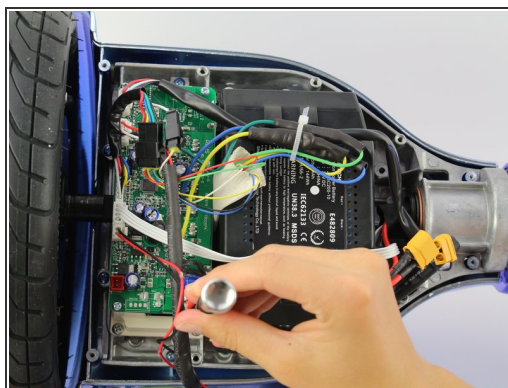
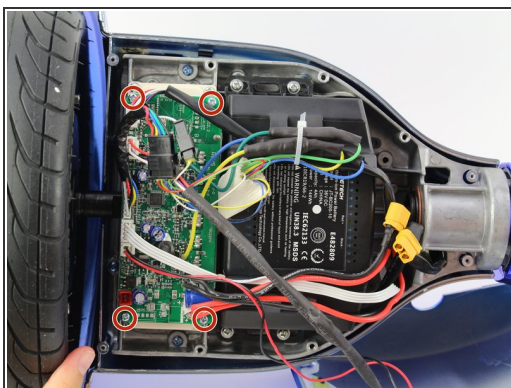
- Grip the bottom right panel and lift to remove it.

## Step 4 — Right Gyroscope and Motherboard



- Unplug the battery from the gyroscope/motherboard by holding the yellow connector and pulling apart.

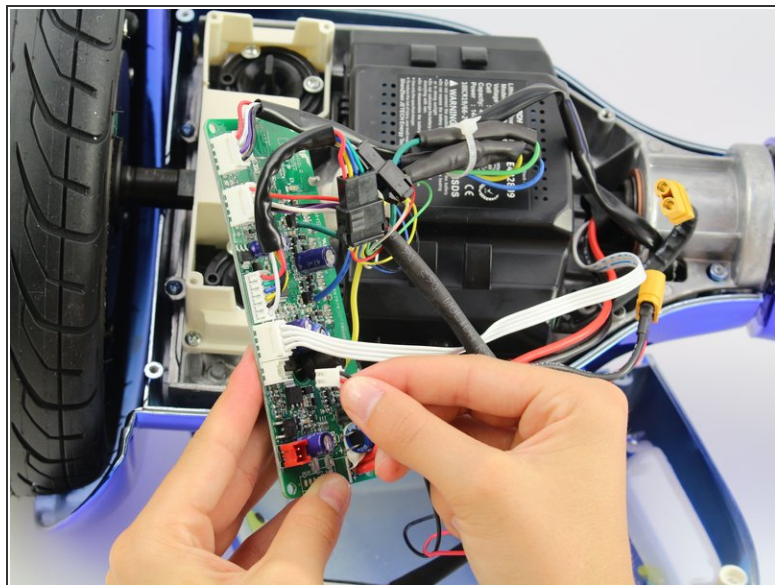
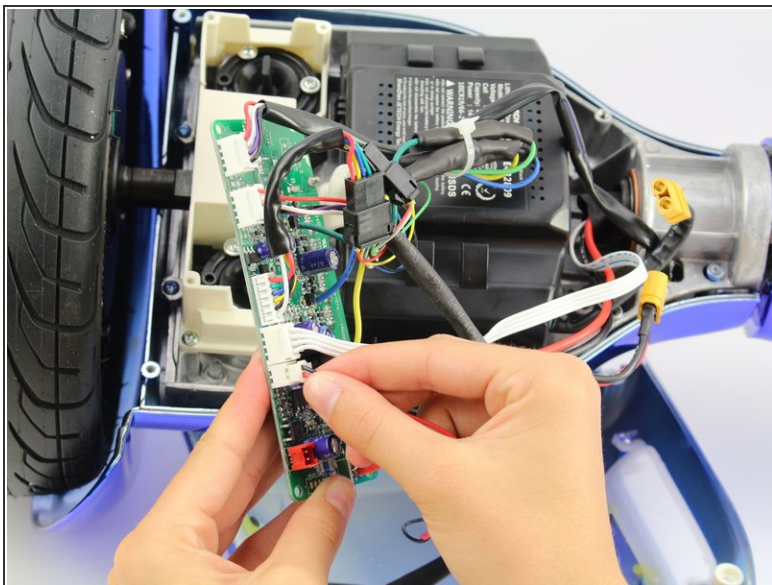
## Step 5



- Remove four 12 mm Phillips #1 head screws from the corners of the green gyroscope/motherboard.

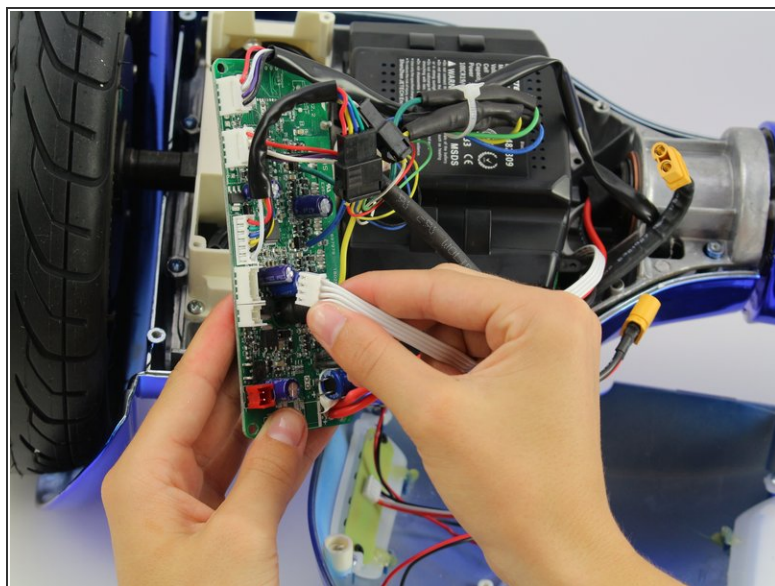
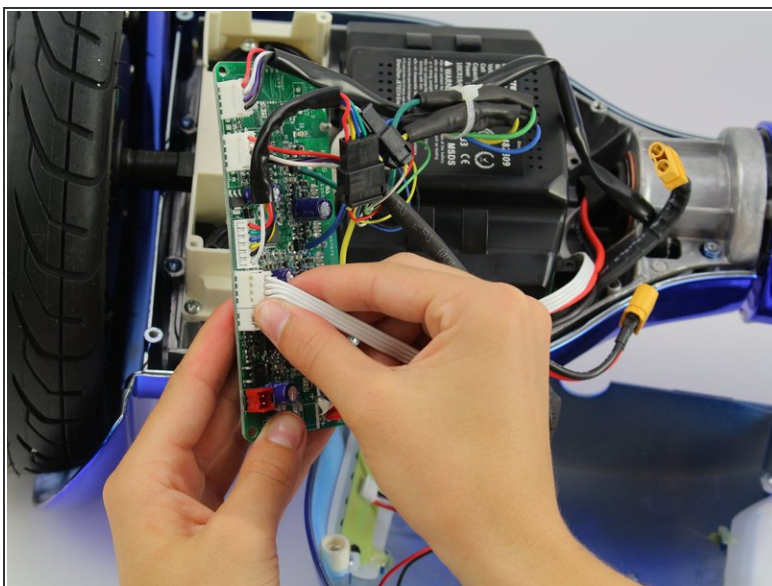


## Step 6



- Unplug the bottom left connector by squeezing it and pulling it away from the board.

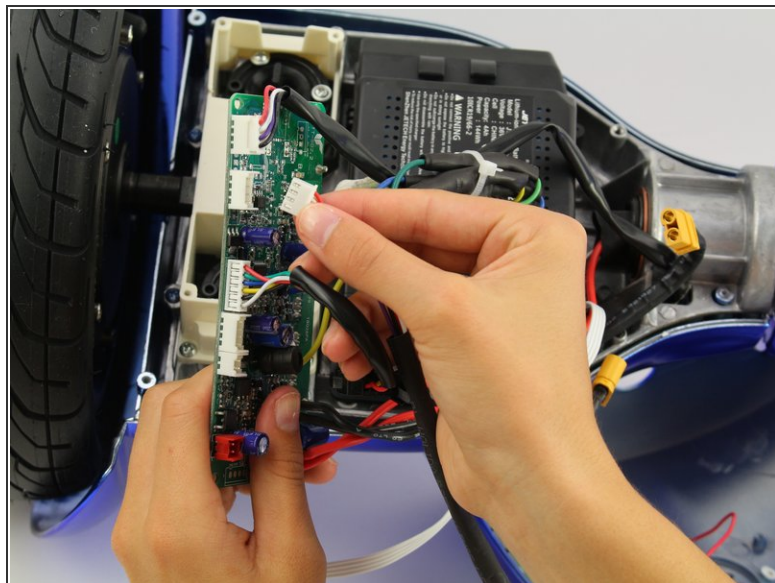
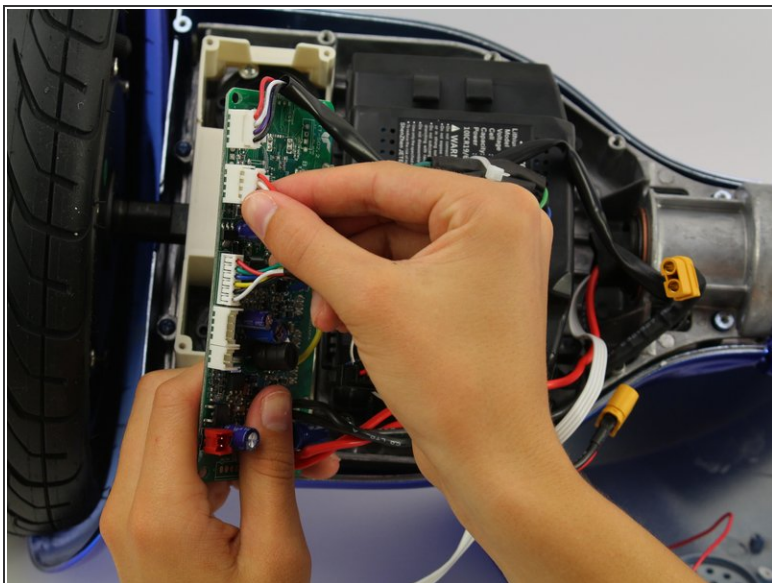
## Step 7



- Unplug the white wires by squeezing the connector and pulling away from the board.

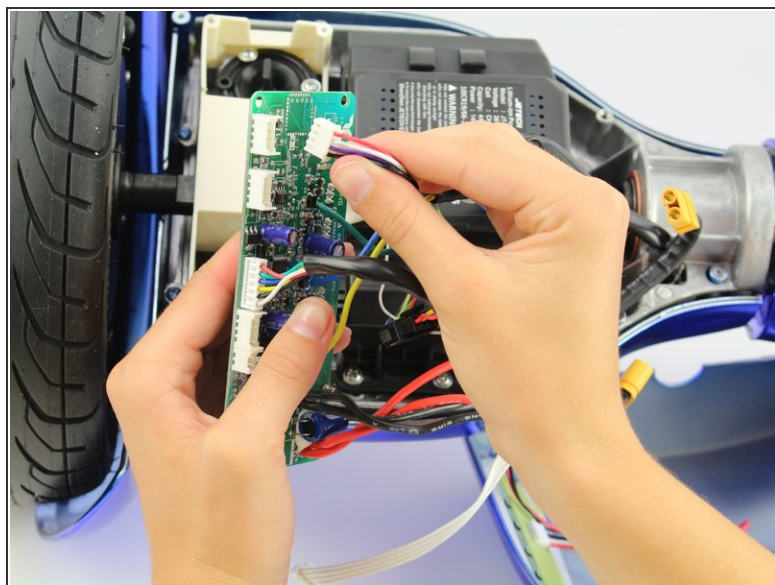
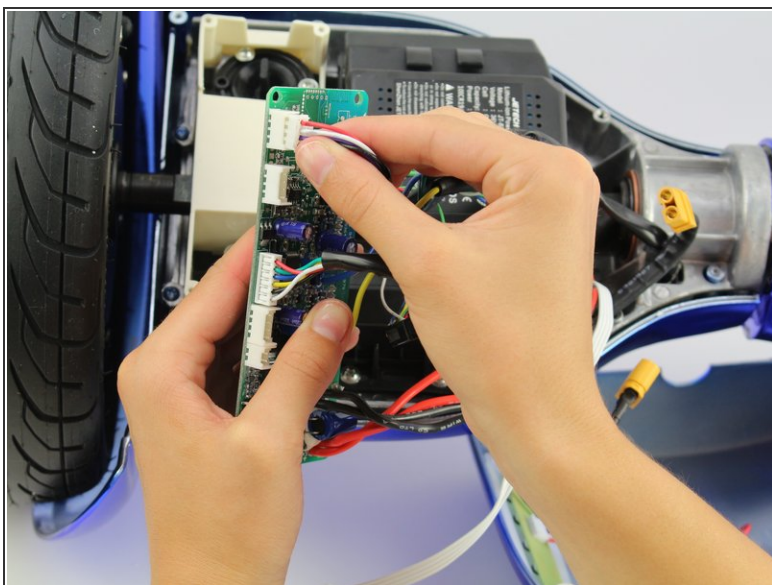


## Step 8



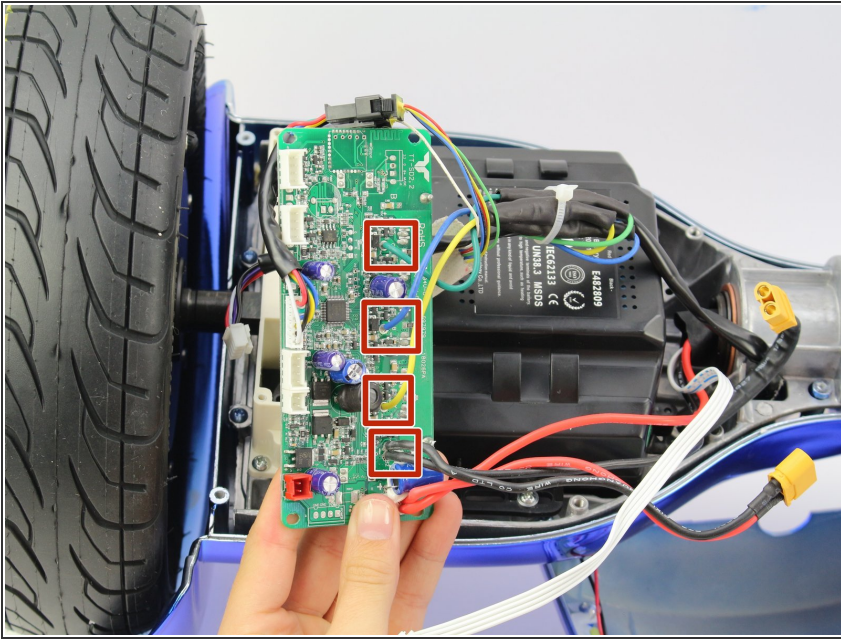
- Unplug one set of the red, white, purple, and black wires by squeezing the connector and pulling away from the board.

## Step 9



- Unplug the other set of the red, white, purple, and black wires by squeezing the connector and pulling away from the board.

## Step 10



- Cut the cable tie and unplug the remaining wires.

To reassemble your device, follow these instructions in reverse order.