



# Hover-1 Ultra Battery Replacement

Replace a malfunctioning battery on your Hover-1 Ultra Hover Board, to continue riding at full speed and distance

Written By: Camron Clifton



---

## INTRODUCTION

Is your Hover-1 riding slowly, dying while riding, or not going as fast? If you are facing these problems, a simple replacement of the battery could solve your issues. You will need a Phillips #1 screwdriver to remove the screws.



### TOOLS:

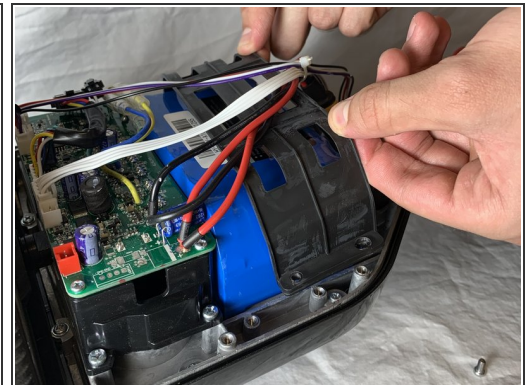
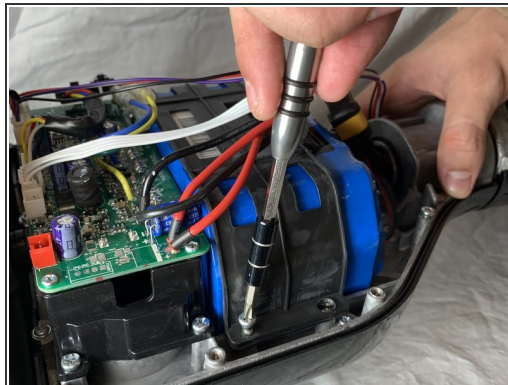
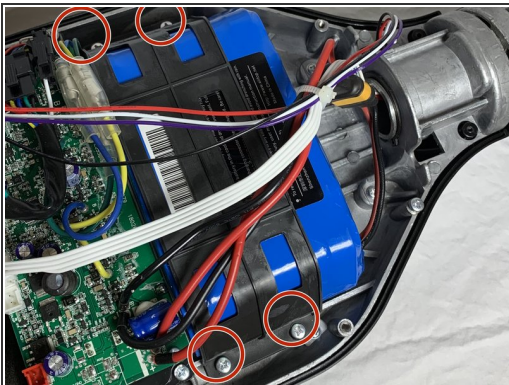
- [Phillips #1 Screwdriver](#) (1)
-

## Step 1 — Battery



- Orient the hoverboard so that the pads are facing down.
- With the Phillips #1 screwdriver, remove all 18 of the screws on the underside of the board.
- Carefully remove the shell, lifting directly up.

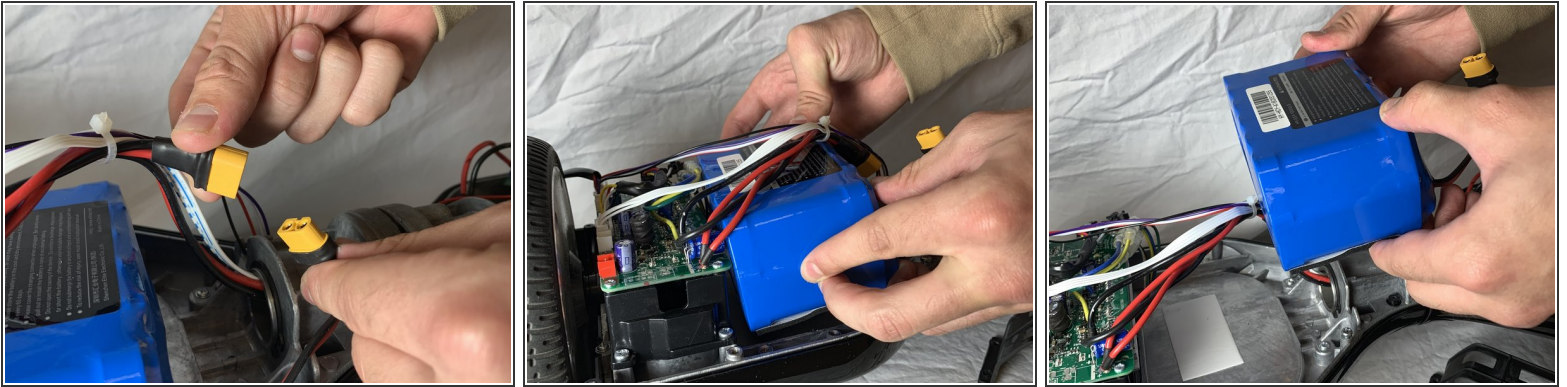
## Step 2



- Remove the 4 screws around the battery on the case using the Phillips #1 screwdriver.
- Remove the case that houses the battery.



## Step 3



- Pinch and pull apart the connecting black and yellow cable.
- Remove the battery from the hoverboard.

To reassemble your device, follow the instructions in step 1 in reverse order.