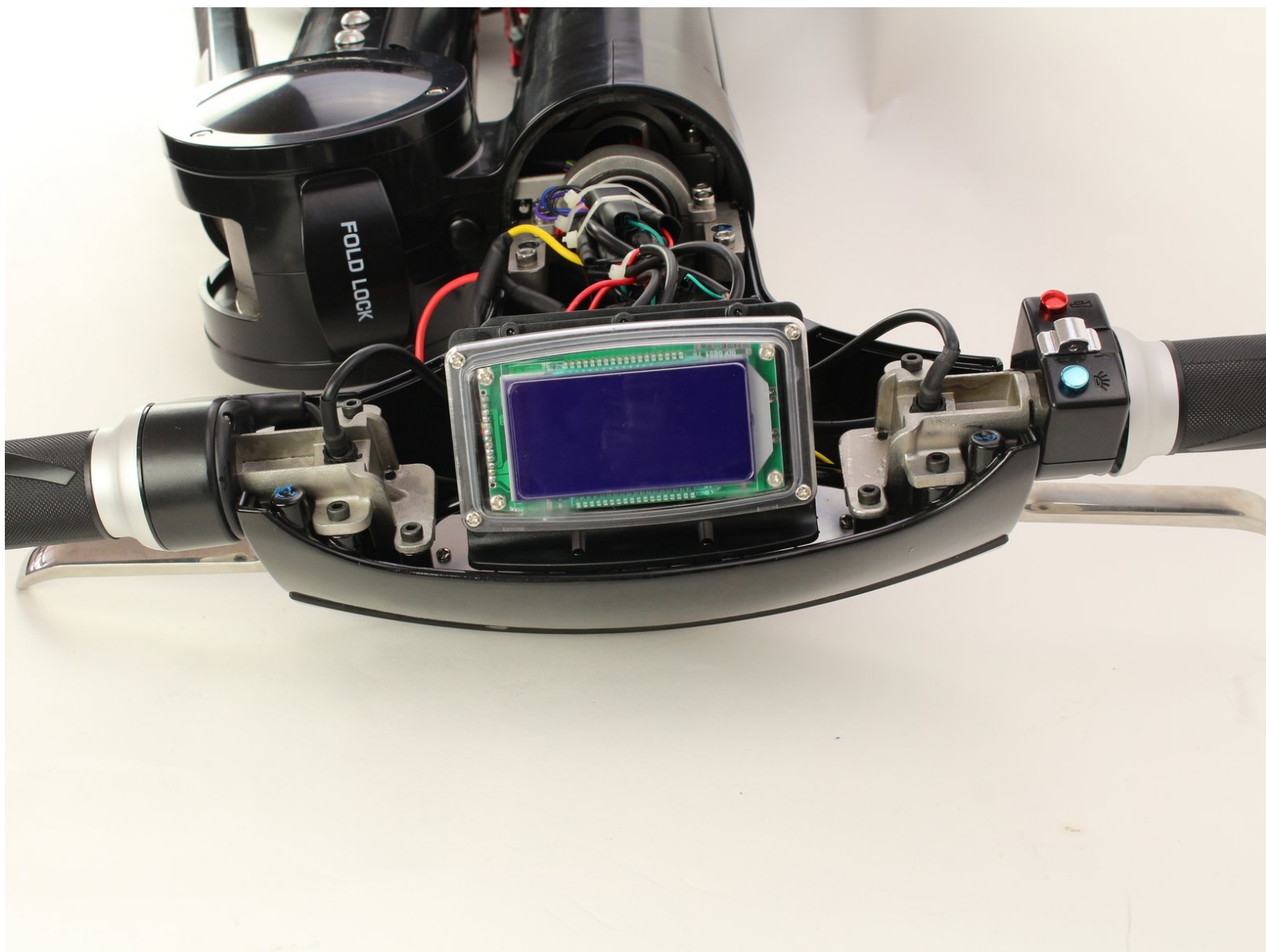




# Hover-1 XLS LCD Screen Replacement

How to replace the LCD screen in the Hover-1 XLS.

Written By: Jonathan Hidalgo



---

## INTRODUCTION

The LCD Screen displays the status of the bike and is a clear indicator if your bike is on or off. Before beginning this replacement, you should know that it is a prerequisite to get to the ignition off. To get to the ignition, follow the ignition guide. You should also be able to solder. If you don't know how to solder, just follow the soldering guide in iFixit.



### TOOLS:

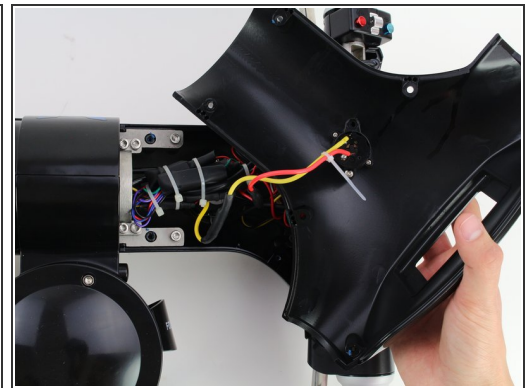
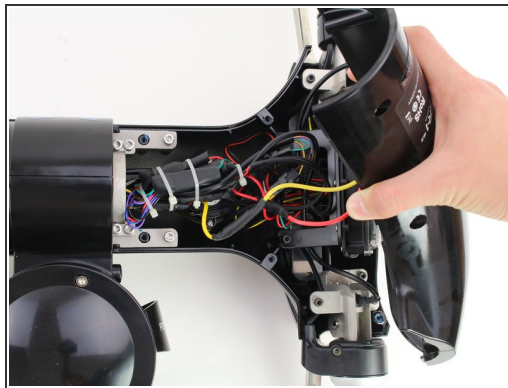
- [3mm Hex Key, T-grip](#) (1)
  - [Phillips #2 Screwdriver](#) (1)
-

## Step 1 — Ignition



- Remove the six 16mm #3 Hex head screws located on the front panel.
- ⓘ The screws are held in with Teflon tape, so use a chemical remover like B'laster to loosen the screws.

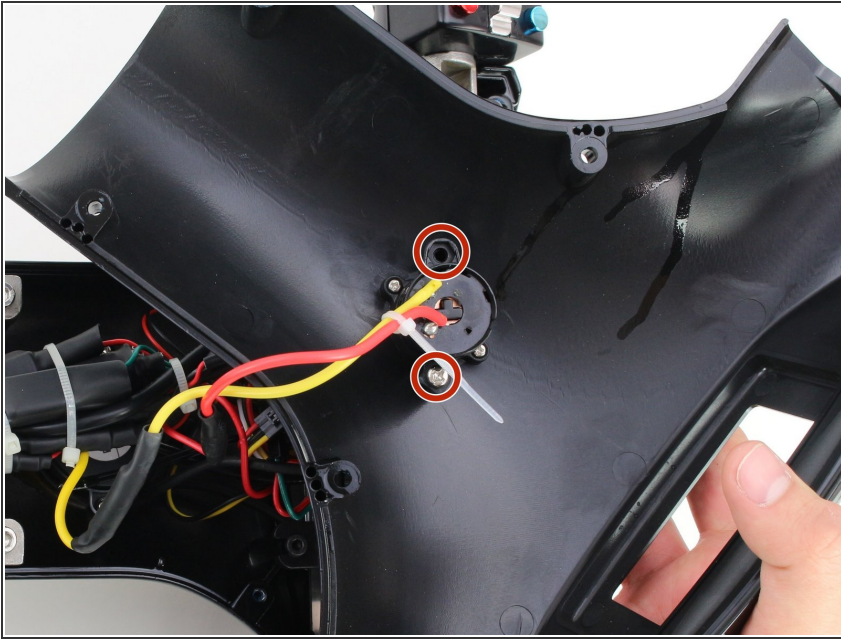
## Step 2



- Grab the front panel and gently lift it up to the side.

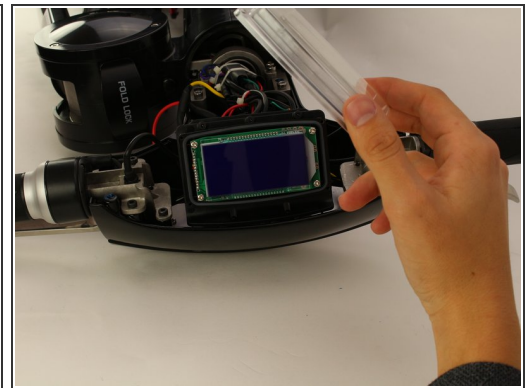
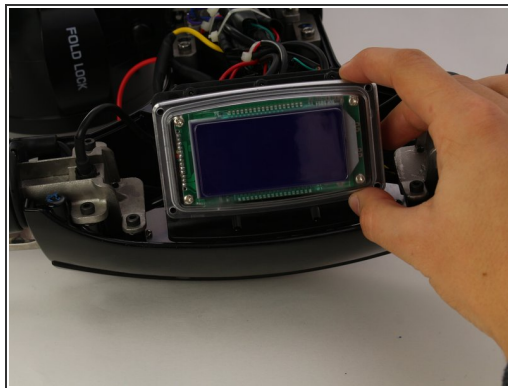
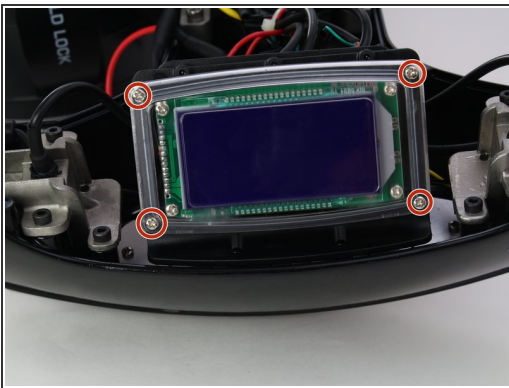
⚠ The front panel is connected to the ignition, so don't pull too hard or the wires will get damaged.

### Step 3



- Remove the two, 19 mm Phillips #2 screws holding the ignition.
- ⓘ Remove the yellow and red wires that are connected to the ignition. To remove them, look at the [soldering guide](#) provided by iFixit.

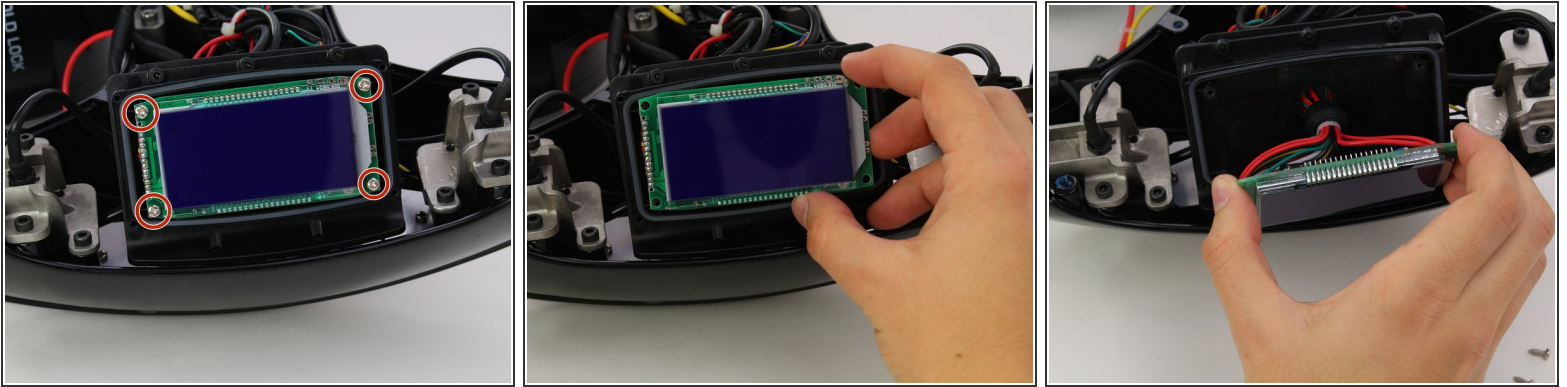
### Step 4 — LCD Screen



- Remove the four 10mm Phillips #2 screws holding the casing of the LCD.
- Remove the casing on the LCD.



## Step 5



- Remove the four 10mm Phillips #2 screws holding the LCD onto the bike.
- Gently lift off the LCD screen.
- ⓘ Follow iFixit's [soldering guide](#) to remove the LCD screen.

To reassemble your device, follow these instructions in reverse order.