



# How To Get Your iPhone Working Again With A Faulty PMU

How To Get Your iPhone Working Again With A Faulty PMU

Written By: Phryne



## INTRODUCTION

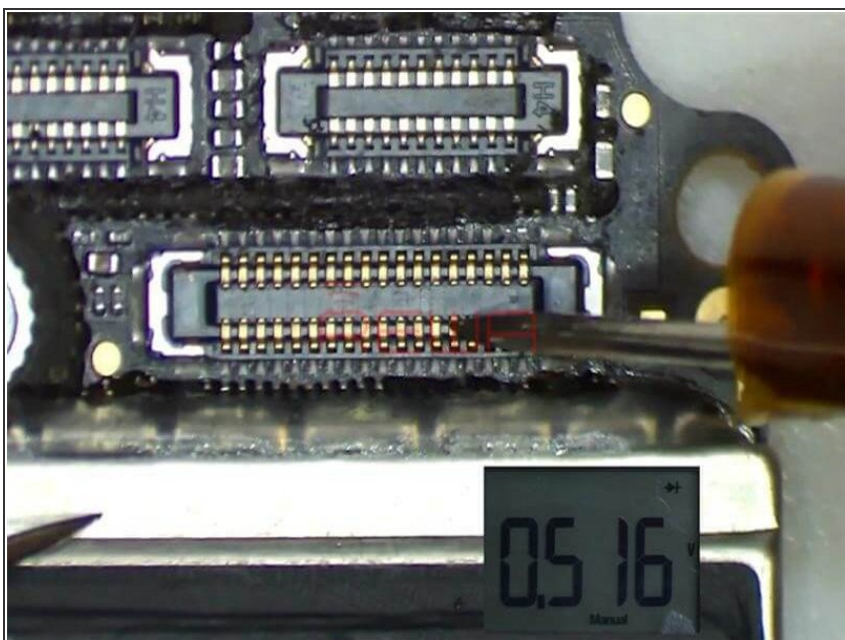
iPhone front camera not working? What should a repair technician start with? Follow our repair guide today and learn how to troubleshoot step by step. What's more, REWA LAB will show you how to avoid further damaging the logic board by adopting a fresh new repair solution.

## Step 1 — Test



- Tap 'Camera' icon and enter into camera mode. The rear camera works normally. Switch to front camera. It can not be activated.

## Step 2 — Diagnosis



- Let's check front camera connector J4503 and relevant circuits first. Run diode mode measurement of pins

on J4503. The measured value is normal.

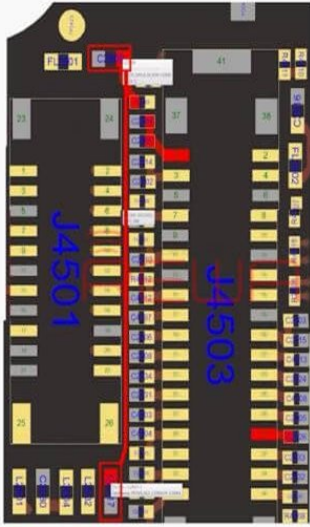
### Step 3 — Diagnosis



- Next, we need to measure working voltage of the front camera.
- Tap 'Camera' icon to enter into camera mode. Run voltage mode measurement of front camera power supply test points FL2901 and C2909.
- The measured value of FL2901 is normal. There is no voltage measured on C2909, which is abnormal.
- Continue to run diode mode measurement of FL2903. Nothing goes wrong. We can confirm now that the fault is related to U1801.

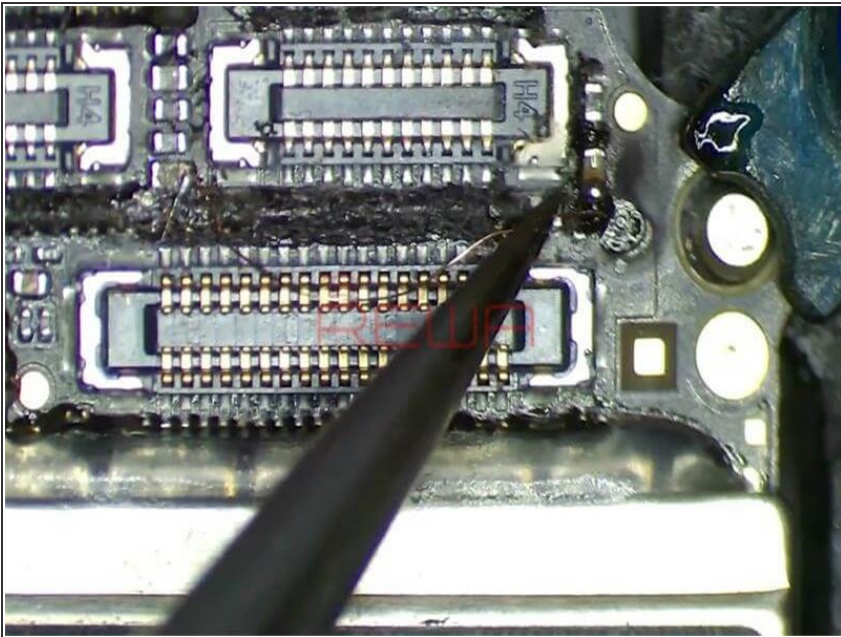


## Step 4 — Troubleshooting



- We can fix it by replacing with a new U1801 or borrow 3V voltage from other points on the board.

## Step 5 — Troubleshooting



- Here we need 0.1mm solder tinned enamelled wire. With one end of the wire soldered to C2917, a 3V

voltage point nearby, solder the other end to C2909.

## Step 6 — Reassemble And Test



- Tap 'Camera' icon to enter into camera mode. The front camera works normally. Switch to rear camera. The rear camera works normally.

## Step 7 — Video Reference



- For more repair cases, please visit [REWA YouTube Channel](#).
- Credit: [REWA Technology](#)

To reassemble your device, follow these instructions in reverse order.