



# How To Patch A Hole In The Wall

By the end of this guide, you will know the tools that are needed and steps taken in order to patch a hole in the wall.

Written By: Joseph Garcia



# INTRODUCTION

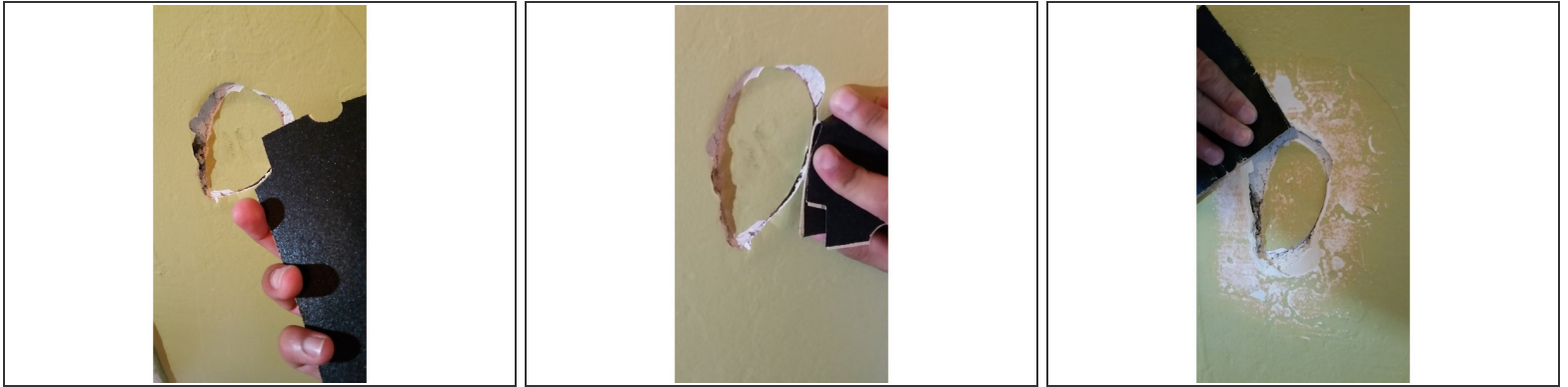
For your shoddy walls that have holes in them, here is a quick and easy guide to completely repair the holes.

---

## TOOLS:

- [Putty knife](#) (1)
  - [Medium Grit Sand Paper](#) (1)
  - [Toothbrush](#) (1)
  - [Spackle](#) (1)  
*mixing directions may vary*
  - [clean rags, about A4 size](#) (1)
  - [container](#) (1)
-

## Step 1 — How To Patch A Hole In The Wall



- Sand down the hole and the area surrounding. This is in order to get paint off the wall.

## Step 2



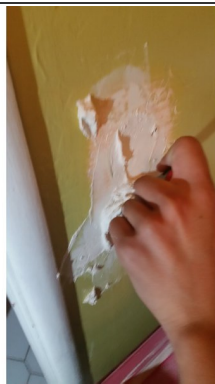
- Use the rag and the toothbrush to clean off any excess rubble near the hole.

### Step 3



- Follow the directions on the spackle box to prepare the spackle for application.
- ❗ Although all spackle brands are different, spackle should have a consistency similar to toothpaste when mixed with water.

### Step 4



- Take the spackle mix and apply it to the hole.
- Make sure to layer the spackle evenly and remove excess spackle.

## Step 5



- Wait 30-45 minutes for the spackle patch to dry.
- ⓘ Wait time may vary depending on the depth of the hole and spackle mix used.

## Step 6



- Make sure the spackle is dry.
- Sand the spackle until it is smooth and flush with the wall.

Now your wall should be looking as good as new!