



# How To Rebuild Coaster Brakes

How to remove, clean, grease, and reassemble an older model coaster brake for a bicycle.

Written By: Jacob Reiter



# INTRODUCTION

This guide will walk you through removing, cleaning, lubricating, and reassembling an older model coaster brake.



## TOOLS:

- [Adjustable Wrench](#) (2)

*Fixed Wrenches can also be used, but several sizes will be needed, and they will be metric*

- [Latex or nitrile gloves](#) (2)

*More than one pair is advisable, as they may break, or get greasy*

- [Toothbrush](#) (1)

*This will get stained*

- [Rags](#) (2)

*Dry and Clean*

- [Phillips #2 Screwdriver](#) (1)

- [Paper Towels](#) (1)

*Several will be needed*

- [Plastic Tub](#) (1)

*This is to wash the parts. Put about two inches of water in it.*



## PARTS:

- [Tube of Marine Bearing Grease](#) (1)

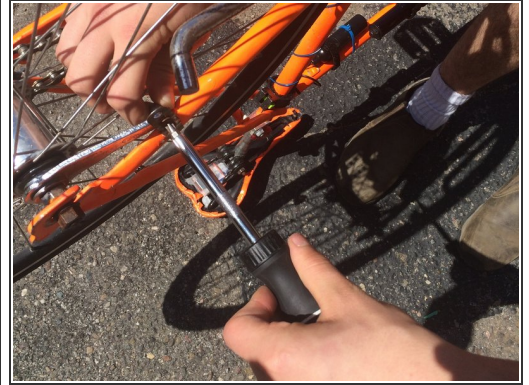
*Type isn't critical, but this is cheap and easy to find. I actually used White Lithium Grease.*

- [WD-40](#) (1)

- [Dish Soap](#) (1)



## Step 1 — How To Rebuild Coaster Brakes



- i** This step will be easier if you flip your bicycle upside down, and balance it on the seat and handlebars.
- Loosen the nuts holding the axle in place using the two wrenches.
  - Unscrew the brake arm from the frame of the bicycle using the screwdriver.

## Step 2



- Loosen the nuts holding the axle in the wheel using the wrenches. Unscrew the axle, and remove the bearings and brake assembly. Set them off to the side on a rag.
- i** When pulling the parts out, arrange them in the order in which you took them out. This way, you don't forget the order.



### Step 3



- Clean the inside of the wheel hub using a paper towel and some WD-40.
- ⓘ Be sure to wipe out excess grease and grit.
- ☑ When done, set the wheel off to the side.

### Step 4



- Add some soap to the water in the plastic tub, and mix it around
- ⓘ A small squirt of soap will do. Too much soap, and you'll have to deal with excess bubbles.



## Step 5



- Clean all of the internal parts in the tub using the toothbrush.
- i** You may occasionally have to wipe excess grease and grit off of the toothbrush with a paper towel.
- Be sure to get all of the areas where the bearings will sit (see red circles)
- Also scrub the threads on the sprocket (see orange line)

## Step 6



- i** When cleaning the bearings, spin the balls to help remove grit from inside.



## Step 7



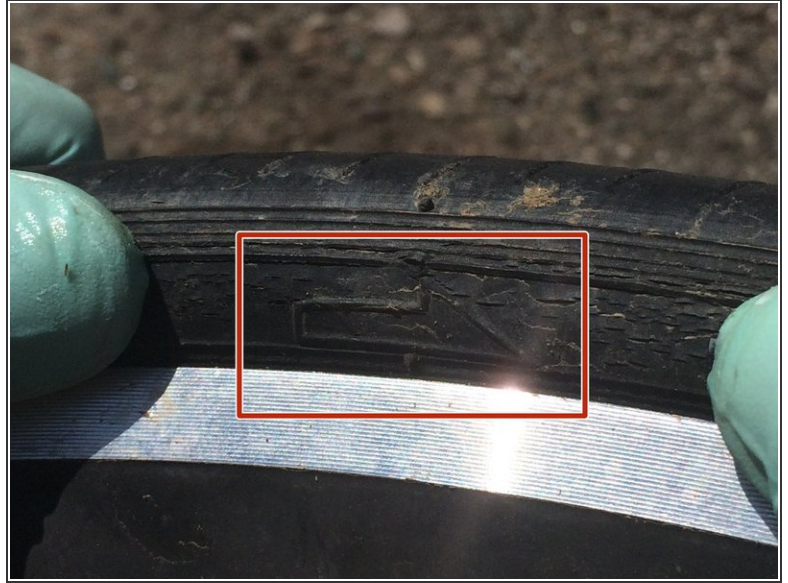
- Dry the parts using a paper towel.
- When dry, set them off to the side on a rag.
- ⓘ Be sure to keep them in order

## Step 8



- Reassemble the parts of the bearing and axle assembly which go on the opposite side of the hub from the sprocket. This includes the brake pads and the cone
- Using your fingers, make sure the bearings are well coated with grease.
- Make sure to add some grease at key points shown (red lines).

## Step 9



- Put the axle and bearings back into the cleaned hub.
- ⓘ Make sure that you put the axle in from the side opposite where the sprocket is.
- ⓘ If you don't remember, look at your tire. Most tires have an arrow pointing in the direction the wheel turns when you go forward. The axle should go in from the side where the arrow points counter-clockwise



## Step 10



- Gently screw the sprocket into the hub.
  - Screw the bearing race on. Make sure not to tighten too much. The sprocket and wheel should still spin easily.
- i** Remember to place the bearings in the right spot. The large one is placed as shown by the red line, and the small one as shown by the orange line.



## Step 11



- Replace the wheel onto the bicycle.
- ✦ Don't forget to put the chain around the sprocket!
- ⓘ Make sure the wheel is straight relative to the bicycle, and that the chain is relatively taut.
- Tighten the nuts to hold the wheel in place.
- Before continuing, spin the wheel and crank the pedals to make sure everything spins smoothly. If not, check to make sure the axle nuts aren't too tight.

Congratulations! You've finished cleaning your coaster brake. Test-ride the bicycle. Listen to make sure that there are no grinding noises. Be sure to test the brake several times. When you're done, make sure all the nuts are still tight.