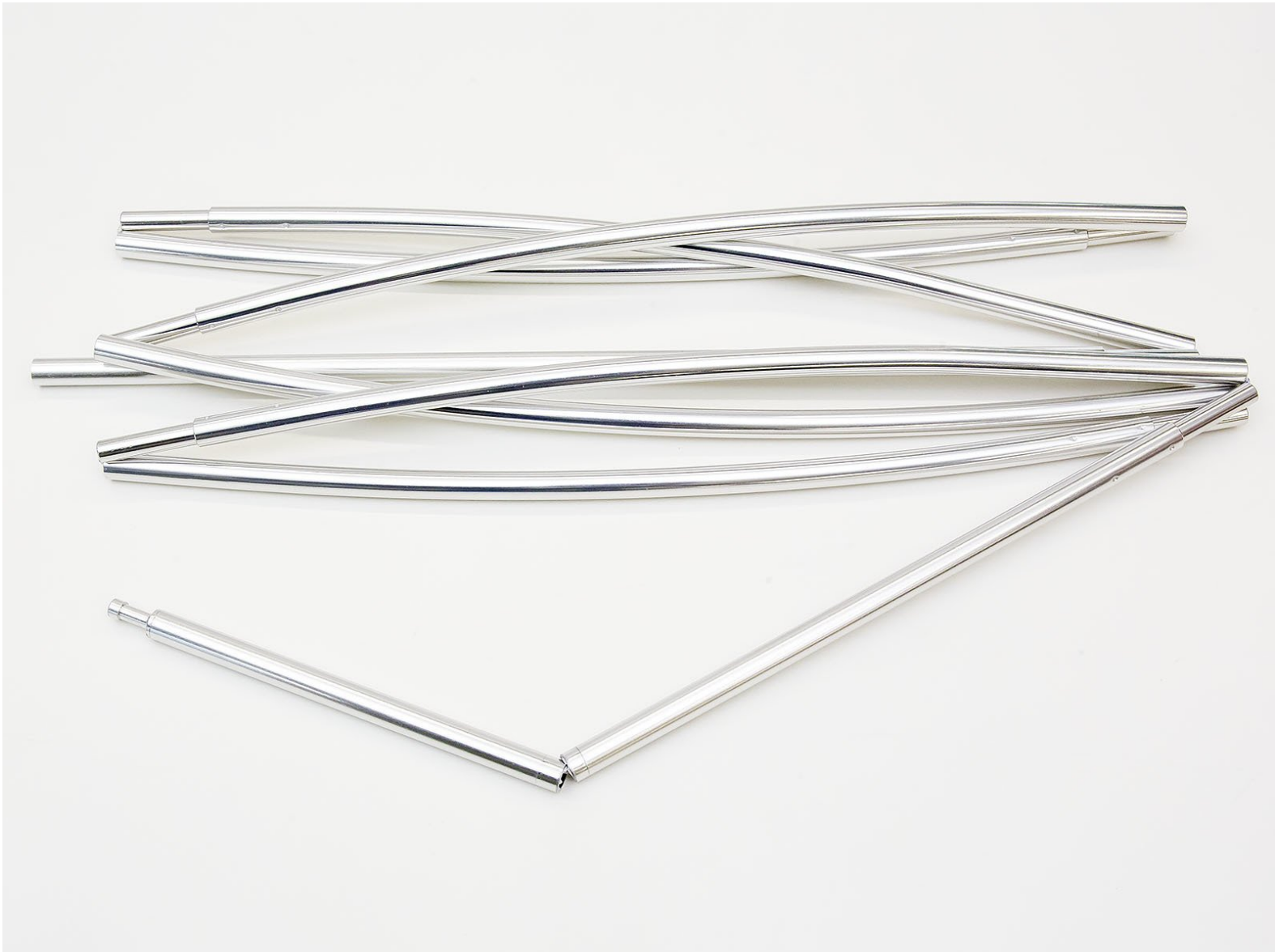




# How do I replace a broken segment of my tent pole?

These instructions cover the necessary steps for replacing a tent pole segment.

Written By: VAUDE Reparaturteam



## INTRODUCTION

Our tents are constructed to stand up to extreme wind and weather conditions. Nevertheless, segments can occasionally break due to excessive strain or other influences (i.e. not completely connecting two segments when setting up the tent, transportation damage). These instructions cover the necessary steps for replacing a tent pole segment.



### TOOLS:

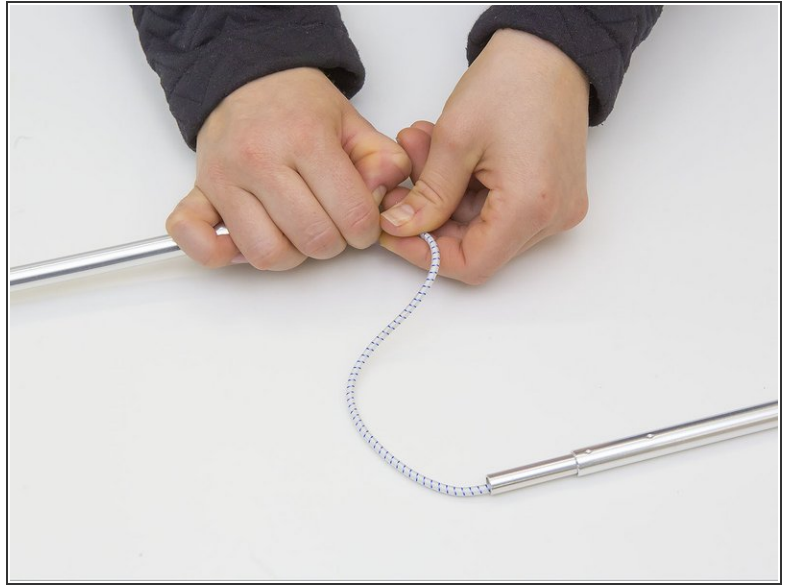
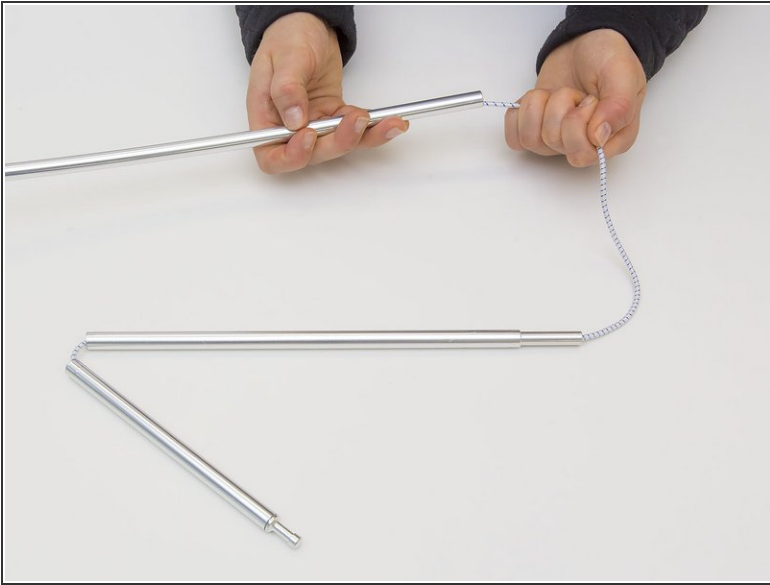
- [Measuring Tape](#) (1)
- [Utility Scissors](#) (1)
- [Flat File](#) (1)
- [Round File](#) (1)
- [Handsaw](#) (1)



### PARTS:

- [VAUDE Tent Pole](#) (1)

## Step 1 — Broken segment of tent pole



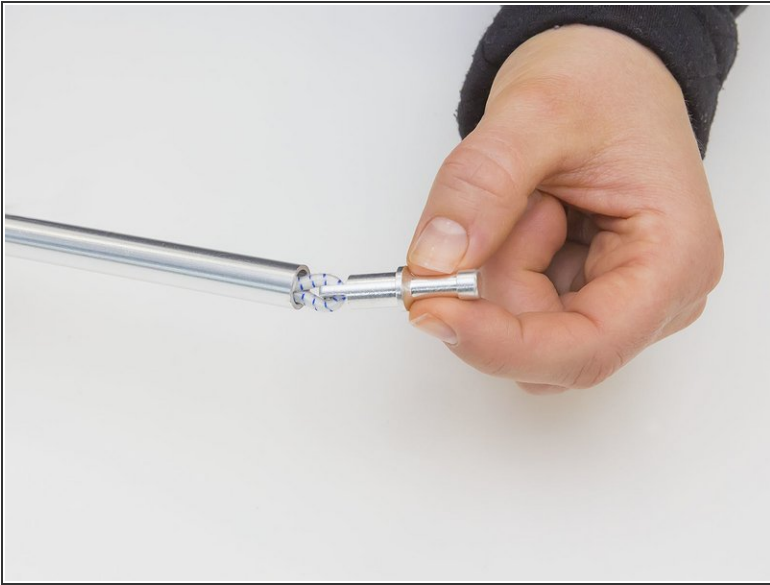
- Loosen the shock cord between the last good segment and the broken segment so that you can remove the pin from the end.

## Step 2



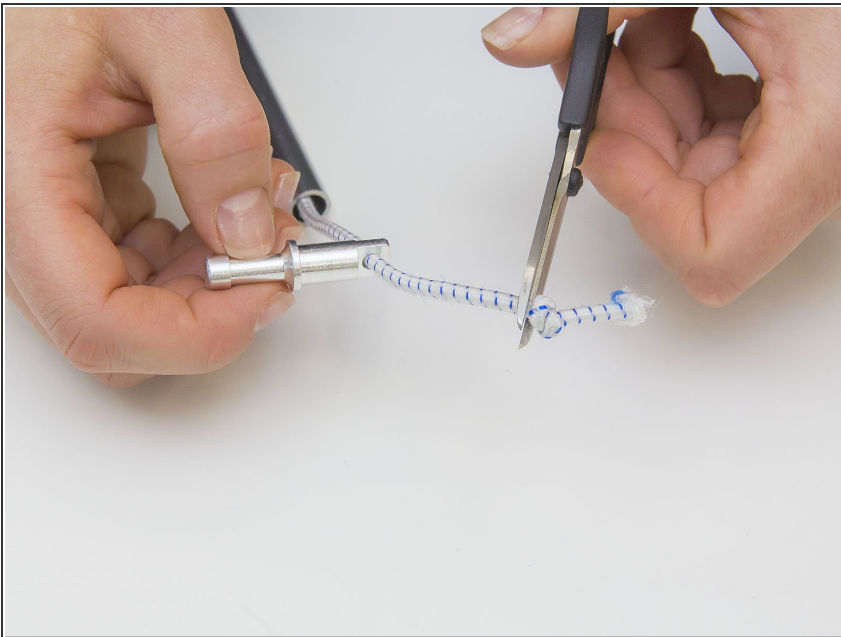
- Attach the shock cord to a clothes pin or similar item.

### Step 3



- Pull the pin out of the segment.

### Step 4



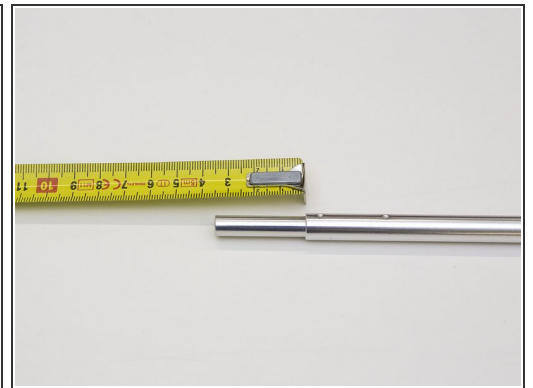
- Cut off the knot.

## Step 5



- Remove the shock cord from the broken segment.
- ❗ If the broken segment is in the middle of the tent pole, you have to first remove the good segment(s). Take care to keep the pole segments in the same order when reassembling the tent pole, numbering them if necessary.

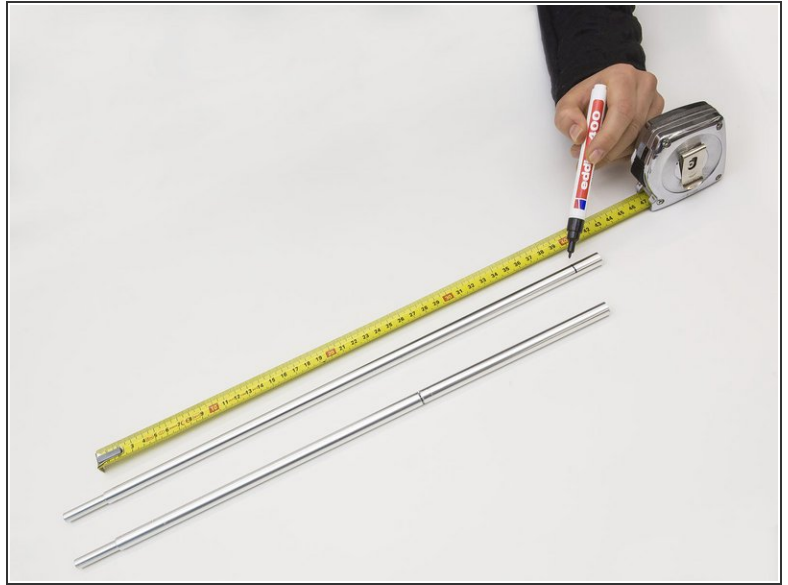
## Step 6



- To determine which replacement segment to order, measure the outer diameter of the pole and of the tapered end.
- ❗ A caliper makes it easier to measure the diameter. If you don't have one on hand, you can use a normal measuring tape.



## Step 7



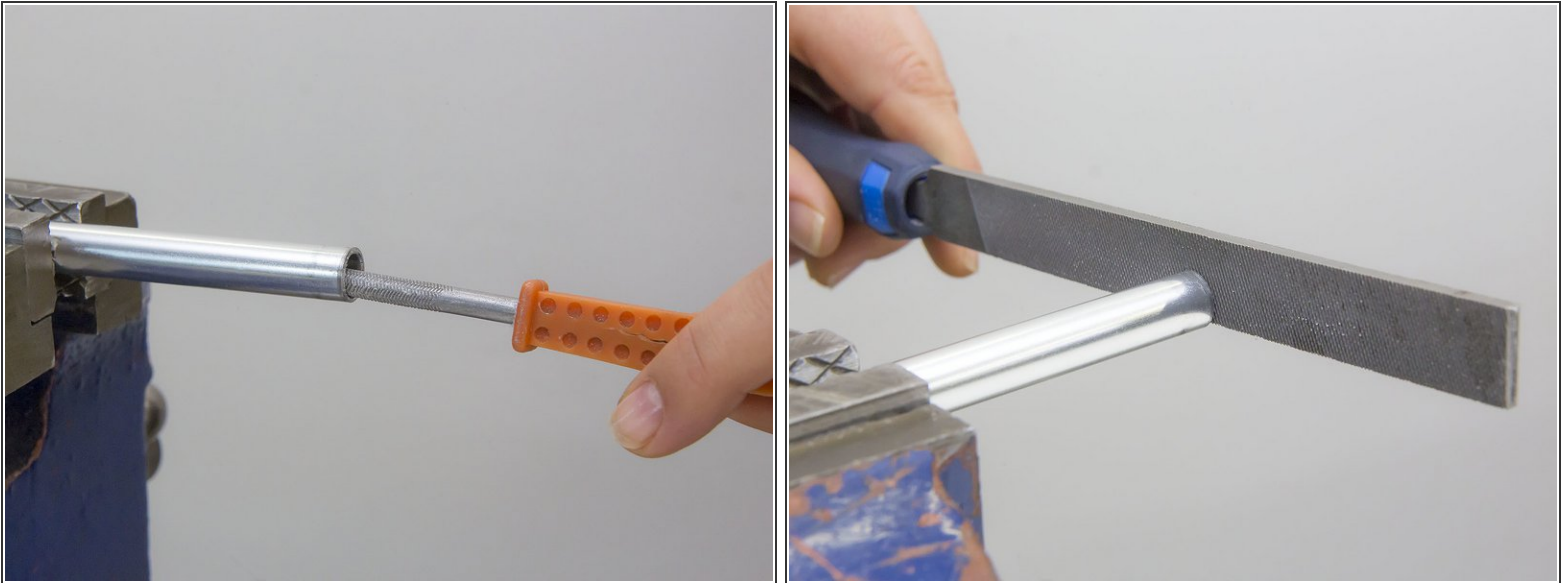
- Transfer the length of the broken segment to the new segment. Start measuring after the tapered end, and mark the length with a marker.

## Step 8



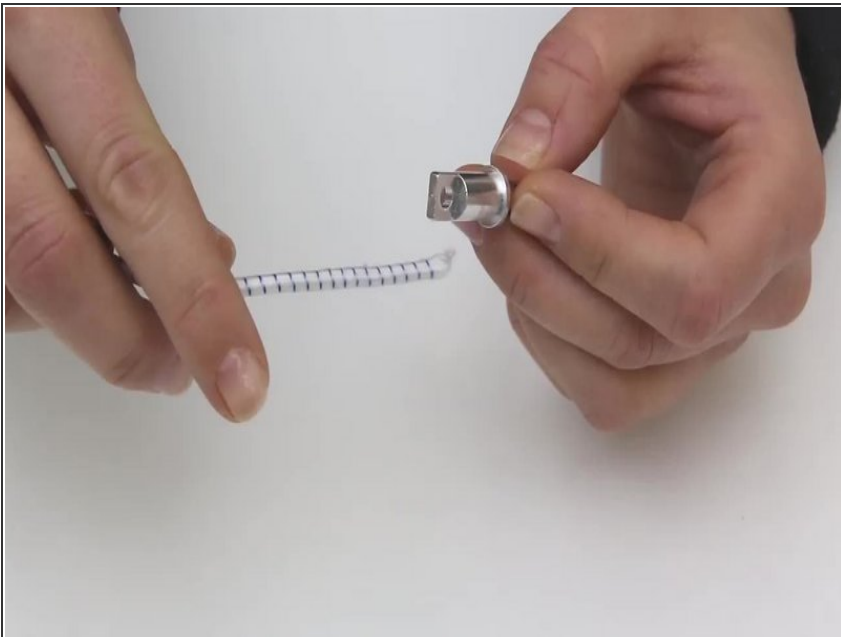
- Put the pole segment into a vice and saw it off at the correct length.

## Step 9



- File off any sharp ends using the round file on the inside and the flat file for the outer edges.

## Step 10



- Rethread the shock cord through the segment. Tie the end of the shock cord to the pin and thread the other end through the pole.