



# How do I replace the wheels on my Melbourne trolley?

Follow this guide to replace the wheels of your VAUDE Melbourne trolley.

Written By: VAUDE Reparaturteam



## INTRODUCTION

Whether over asphalt, marble floors or cobblestone – a trolley has to be able to take a lot when you're travelling. Trolley wheels can become damaged by frequent use or just normal wear and tear. When that happens, it's time to change the tyres – just like a tyre change for your car. We'll show you how to change the trolley wheels for the Melbourne trolley in just a few steps.



### TOOLS:

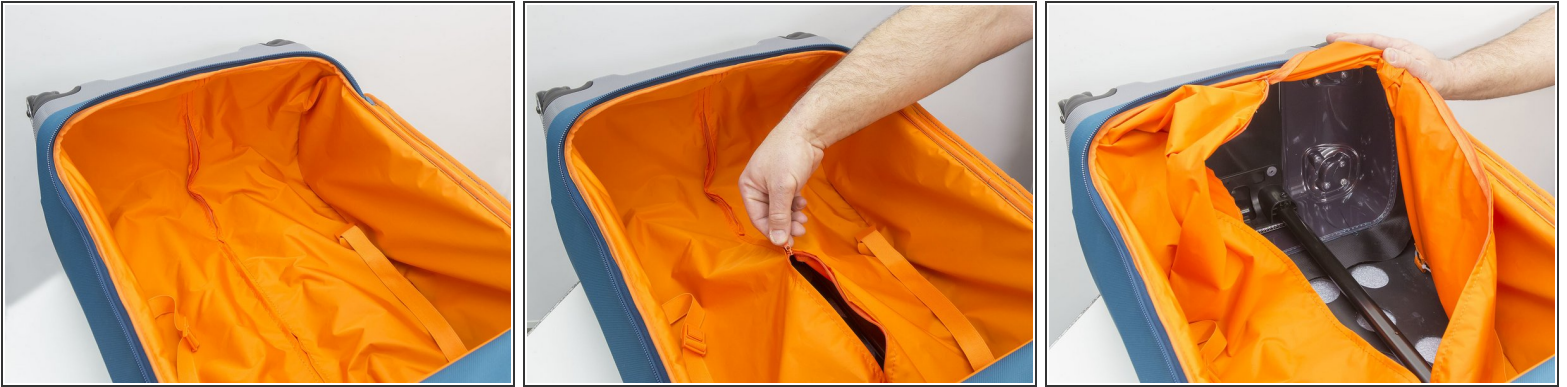
- [Phillips #2 Screwdriver](#) (1)



### PARTS:

- [New wheel set](#) (1)

## Step 1 — Wheels



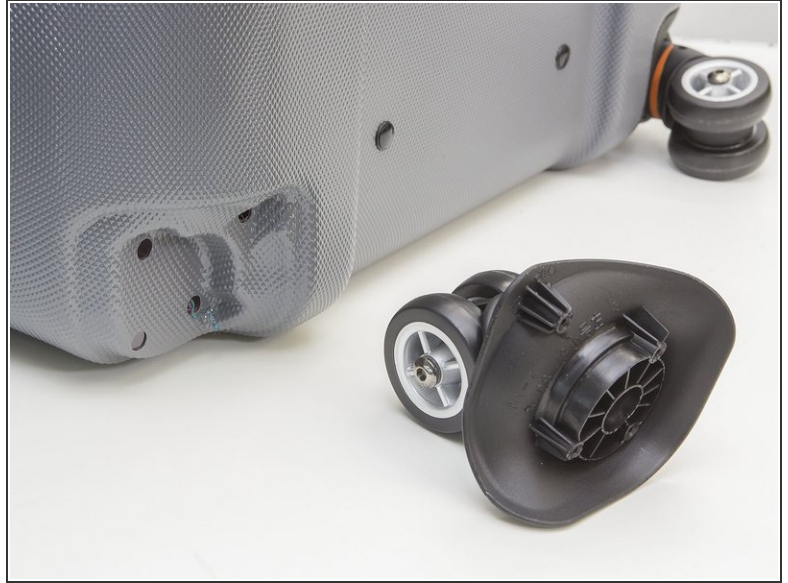
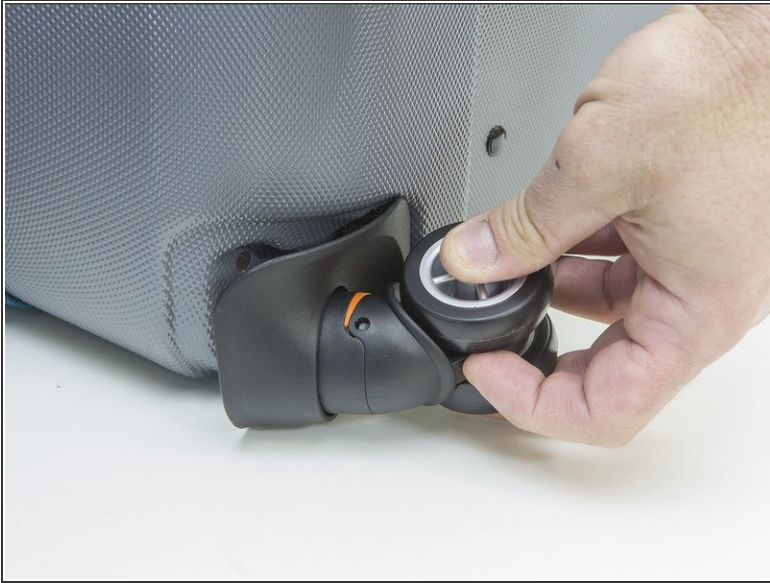
- Open the trolley and unzip the lining.

## Step 2



- Unscrew the 4 screws with a Phillips screwdriver PH2 die 4.

### Step 3



- Remove the wheels from the wheelhouse.

Follow the instructions in reverse order to finish the repair.