



How to Access the Internal Components of an HP 15-R011DX

This guide is a prerequisite to replacing many parts in the HP 15-R011DX. This guide will show you how to access the internal components of the laptop.

Written By: Ethan Guillotte



This document was generated on 2020-03-27 05:49:47 PM (MST).

INTRODUCTION

Accessing the internal components of the HP 15-R011DX is the beginning to find and solve the majority of all problems in the laptop. You're going to need a Phillips #1 screwdriver and a safe place to put small pieces such as the screws and other components so to prevent loss.



TOOLS:

- [Phillips #1 Screwdriver](#) (1)
 - [Metal Spudger](#) (1)
-

Step 1 — Battery



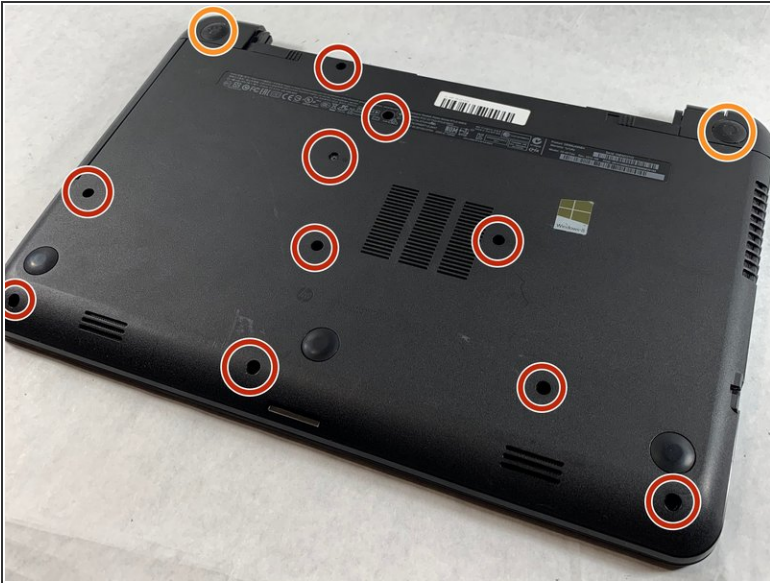
- Slide the lock mechanism on the left side of the laptop to the right.

Step 2



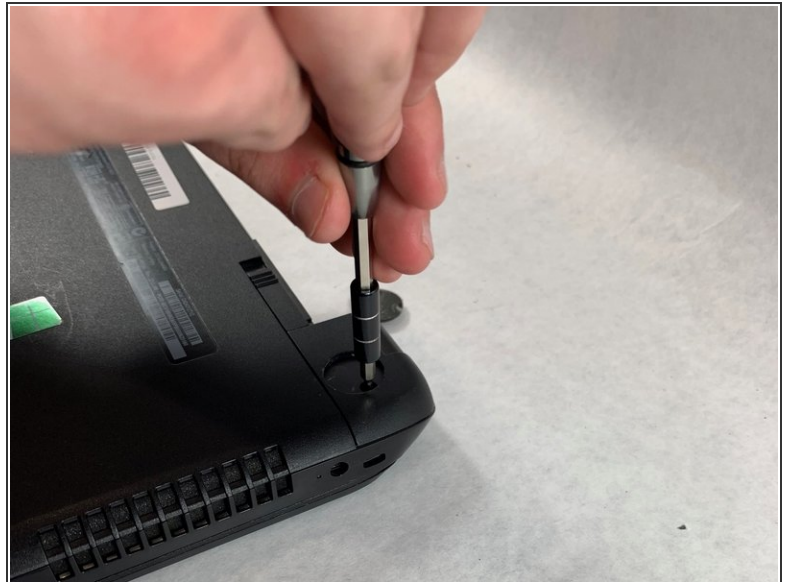
- While holding the right slide mechanism, remove the battery from the laptop.
- ⓘ The battery is not pictured here because it is missing from this particular device.

Step 3 — How to Access the Internal Components of an HP 15-R011DX



- Flip the laptop over to reveal screw locations.
- Use a metal spudger to remove the two rear rubber feet. There are screws hidden underneath them.

Step 4



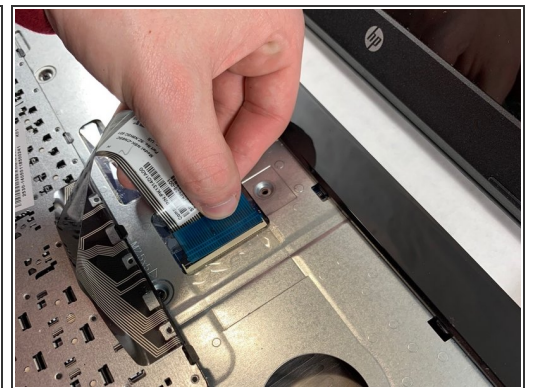
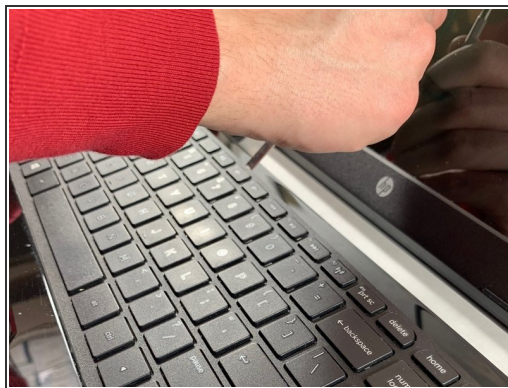
- Remove the twelve 5mm Phillips #1 screws on the back of the laptop.

Step 5



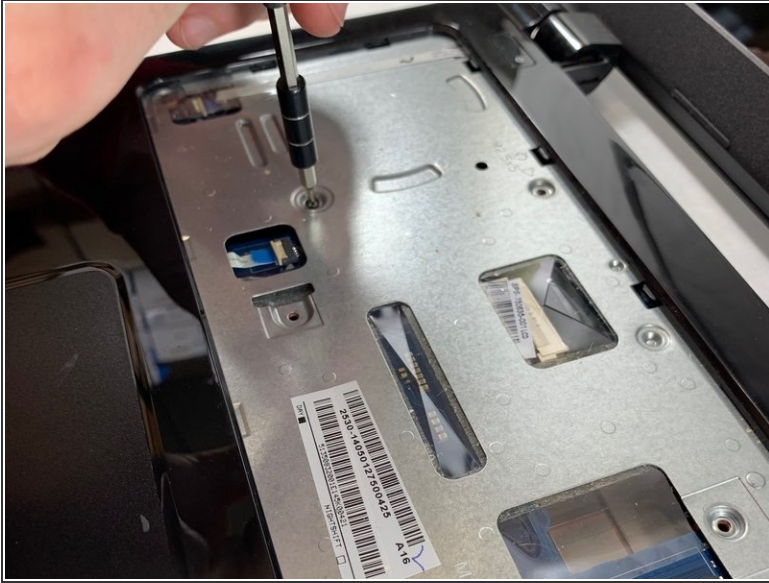
- Remove the DVD drive from the laptop.
- Remove the two 3 mm Phillips #1 screws underneath the DVD drive.

Step 6



- Flip the laptop and open.
- Detach the keyboard by prying it free from the laptop using a spudger.
 - ⚠ Do not completely remove the keyboard yet. It is still attached by a ribbon cable.
- Disconnect the keyboard ribbon cable.

Step 7



- Disconnect the two narrow ribbon cables to the left of the keyboard connection.
 - Remove five 4 mm Phillips #1 screws from the metal tray for the keyboard.
 - Pry open the plastic casing using a spudger.
- ⚠ If struggling to remove the plastic case, check that all screws have been removed.

To reassemble your device, follow these instructions in reverse order.