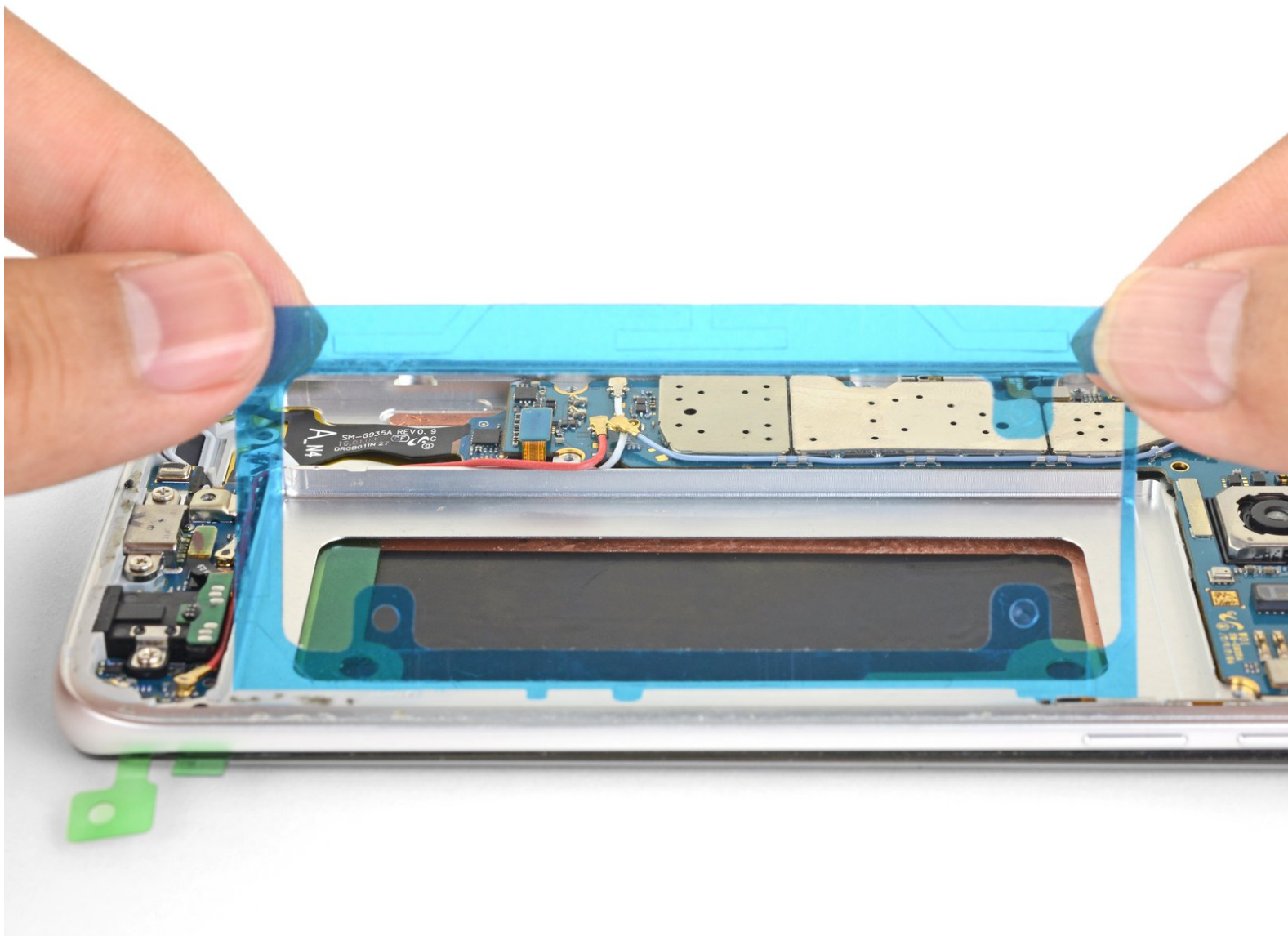




How to Apply Custom-cut Battery Adhesive

How to install custom-cut adhesive to the battery during replacement.

Written By: Arthur Shi



INTRODUCTION

This guide shows how to apply custom-cut battery adhesive when you replace a battery.

If you are using double-sided tape instead, use this guide as a general guideline for where to apply the tape.



TOOLS:

- [iFixit Opening Tools](#) (1)
- [Tweezers](#) (1)



PARTS:

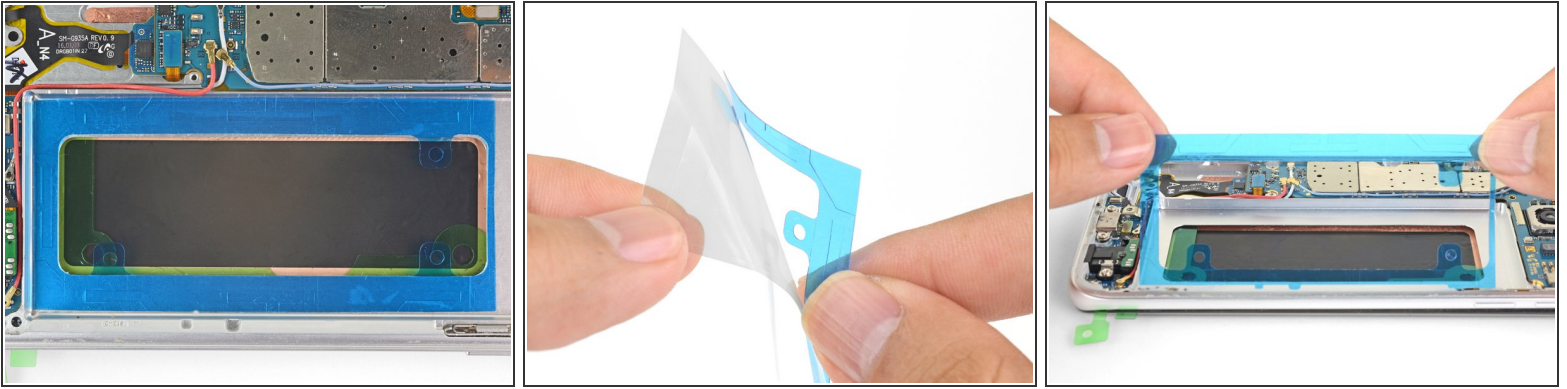
- [Galaxy S7 Edge Battery Adhesive Strips](#) (1)
- [Galaxy S7 Battery Adhesive Strips](#) (1)
- [Galaxy S8 Battery Adhesive Strips](#) (1)
- [Galaxy S8 Plus Battery Adhesive Strips](#) (1)
- [Galaxy S9 Battery Adhesive Strips](#) (1)
- [Galaxy S9 Plus Battery Adhesive Strips](#) (1)

Step 1 — How to Apply Custom-cut Battery Adhesive



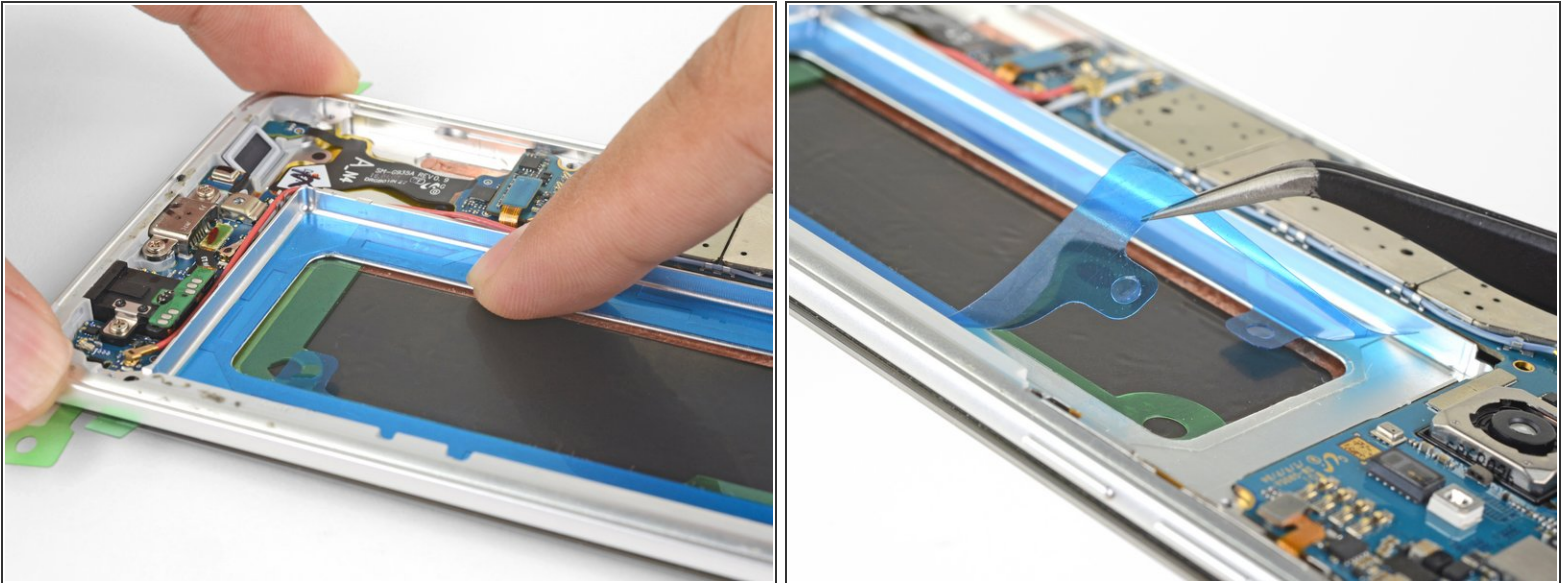
- Remove any remaining adhesive from the phone frame, and clean the glued areas with isopropyl alcohol and a lint-free cloth.

Step 2



- i** Before you begin, figure out how the pre-cut adhesive strip should be oriented and which surface to attach it to.
- If your pre-cut adhesive has pull tabs facing the center hole, the adhesive will attach to the phone's battery well first.
 - If your pre-cut adhesive strip has pull tabs on the outer perimeter, the adhesive will attach to the battery first.
 - Peel the **clear plastic liner** off of the pre-cut adhesive strip, exposing the adhesive.
 - Line up a long edge of the adhesive with the proper surface, as determined above.
 - Set the adhesive down lightly on the surface.
 - If it is not properly aligned, you can carefully peel the adhesive back up and realign it.

Step 3



- Once the adhesive is aligned, use your fingers to press the adhesive into place.
- When you are ready to stick the battery onto the frame, carefully peel away the **blue plastic liner** to expose the adhesive.
- Set the battery lightly in place.
- Plug in the battery connector *temporarily* to ensure that the cable reaches the socket. Disconnect the battery before resuming re-assembly.
- Press the battery perimeter firmly with your fingers to help the adhesive bond.

For optimal performance, calibrate your newly installed battery: Charge it to 100% and keep charging it for at least 2 more hours. Then use your device until it shuts off due to low battery. Finally, charge it uninterrupted to 100%.