



How to Check Resistance of Suzuki Wagon R Temperature Sensor

I am trying out a dummy guide to learn how to use IFIXIT

Written By: ananda





TOOLS:

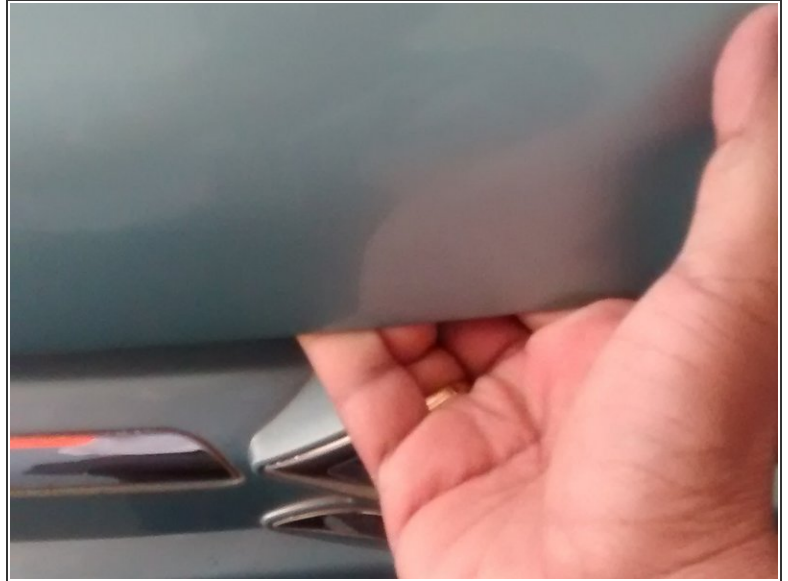
- [Digital Multimeter](#) (1)
-

Step 1 — Safety Information




Be careful when working on Engine! Dont test when engine is running. Wait for engine to cool down!!

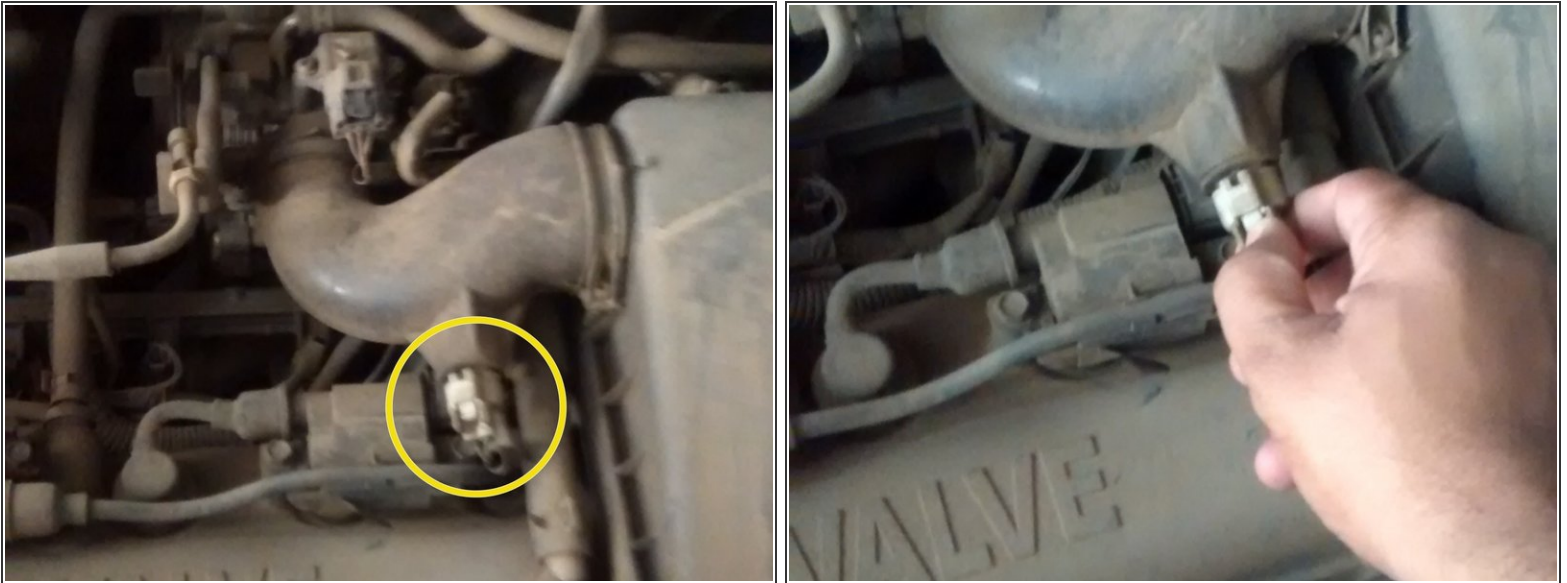
Step 2 — Open the Bonnet to access Engine Compartment



- Pull the bonnet release handle located on the outboard side of the driver's side of the instrument panel. This will disengage the bonnet lock halfway
- Push the under-bonnet release lever sideways with your finger. While pushing the lever, lift up the bonnet
- Continue to lift up the bonnet until it is high enough to support with the prop rod

 Make sure the bonnet is fully closed and latched before driving. If it is not, it can fly up unexpectedly during driving, obstructing your view and resulting in an accident.

Step 3 — Unplug the Plug connection



- The component Intake air temperature sensor is located in the intake pipe just after the Air Filter.
- Unplug the plug connection by pressing the release tab

Step 4 — Measure Resistance



- Turn the knob in the multimeter to set the test to Ohms/Resistance
- Connect the terminal 1 and 2 of the component Intake air temperature sensor to Multimeter positive and negative
- The set value at ignition on and engine cold is 1.3KOhms

To reassemble your device, follow these instructions in reverse order.