



# How to Clean Canon PIXMA MP190 Print Head Nozzle

Over time debris can build up on the print head nozzle causing irregular flow resulting in poor print quality.

Written By: Garret Wescott



## INTRODUCTION

Over time debris can build up on the print head nozzle causing irregular flow resulting in poor print quality.

## Step 1 — Turn printer on.



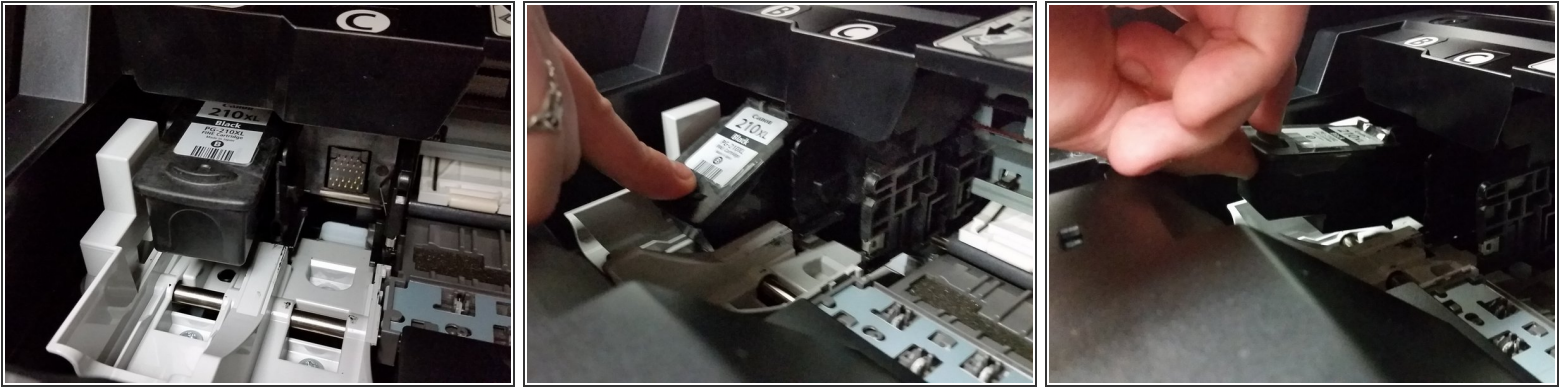
- The printer needs to be on in order to change the ink cartridges.

## Step 2 — Locate Ink Cartridges



- To locate the ink cartridges the paper output tray must be in the lowered position.
- Next lift the scanning unit until the scanning support is vertical.
- Lower the scanning unit until the scanning unit support seats in the scanning unit support slot.

### Step 3 — Remove Ink Cartridge



- Allow the printer to position the ink cartridge carrier into the ink cartridge removal location.
  - Before replacing the ink cartridge ensure the correct ink cartridge is installed.
- Push down on the front edge of the ink cartridge.
  - Observe the angle at which the ink cartridge is removed.
- Grasp ink cartridge and pull up and out to remove.

### Step 4 — Clean Ink Nozzle



- Hold the ink cartridge with the ink nozzle facing up. Using a paper towel firmly wipe the entire ink nozzle.
  - Repeat until the nozzle appears free of any ink and debris.

To reassemble your device, follow these instructions in reverse order.