



# How to Convert a 360 (Fat) Hard Drive into a 360 S Hard Drive

ATTENTION: The Xbox Live ToS technically prohibits this modification. While the odds of being banned are low, it can still happen. YOU HAVE BEEN WARNED!!!

Written By: Nick

## Storage Devices



All Devices

2 devices



Hard Drive



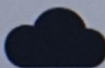
13.8 GB free



Memory Unit



2.9 GB free



Cloud Saved Games

Configure Device

## INTRODUCTION

**ATTENTION: Technically the Xbox Live ToS prohibit this, but the Xbox Live enforcement team typically doesn't care about the hard drive modification. You may be banned from Xbox Live. YOU HAVE BEEN WARNED!!!**

If you have an Xbox 360 4GB console, this guide will show you convert a fat 360 hard drive to work in a E/S console. This can be used as a low cost solution to add more storage to a 4GB console and enable OG Xbox emulation. If you are coming from a dead Fat 360, this will allow you to keep using the old drive and treat the failure as business as usual. **NOTE: Most fat 360 drives are 20GB or 60GB and are therefore smaller than the OEM drive (120/250GB). Keep this in mind when using one of these drives.**

For this guide, I picked up a used 20GB drive (originally from a Fat 360). These are cheap and abundant and can be used as a meaningful bump for a 4GB system, but cannot be used for much more then game saves and 1-2 games stored on the drive since they are significantly smaller. **For mass storage, use a 120GB drive if at all possible.**

### Guide notes

- **DO NOT FORMAT THE DRIVE EXTERNALLY!!! This will erase the security sector.**
- **Depending on where you purchased your drive, THIS MAY VOID YOUR WARRANTY. Keep this in mind if you go this route.**
  - **There are no fat drives With a Microsoft warranty left. If the drive is sold as-is, there is nothing to worry about.**
  - **Since most Fat 360 consoles are dead (and all surviving ones will fail), it may be better to purchase a tested drive.**
- **Most Fat 360 drives are 20GB or 60GB.** Fat 120GB drives are uncommon.
  - **Consider your storage needs before buying one of these early drives.**
- **You must use an aftermarket enclosure. OEM drives are glued shut and will not re-seal.**
  - 3rd party enclosures are not hard to find but are typically only sold online.



### TOOLS:

- [Essential Electronics Toolkit](#) (1)  
T6 and T10 required  
Used to open the Fat 360 hard drive.



### PARTS:

- [Xbox 360 Hard Drive \(Fat\)](#) (1)  
Any working drive will work. 20/60GB drives are the most common.
- [Xbox 360 Hard Drive Enclosure \(S type\)](#) (1)  
**MUST BE AFTERMARKET.** OEM enclosures are glued shut.

## Step 1 — Remove the bottom screws




 ***This will void any present warranty. All Microsoft warranties are expired.***

 ***Depending on where your drive comes from, there may or may not be a warranty seal.***

- Remove the **3 screws** from the bottom of the drive. Use a **T6 Torx** driver.
- Remove the warranty seal (if present) and remove the final screw. Use a **T6 Torx** driver.

## Step 2 — Disassembly tip



 If your drive is difficult to open, a screwdriver or plastic pry tool can be used to help open the enclosure.

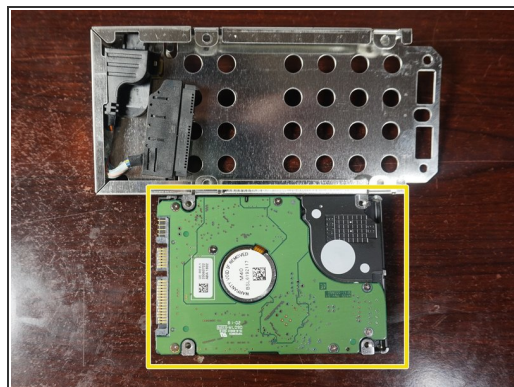
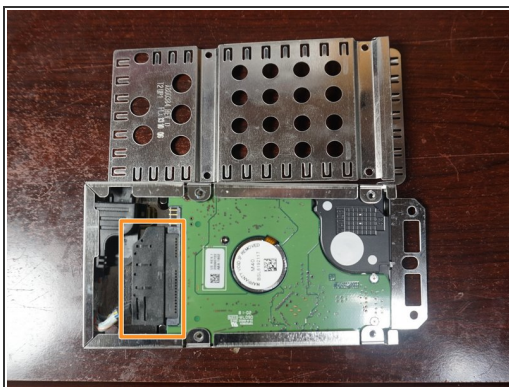
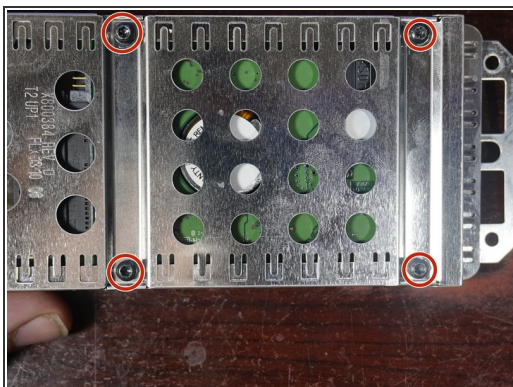
### Step 3 — Open the drive



☞ If you are taking the enclosure apart for the bare drive, less caution is needed.

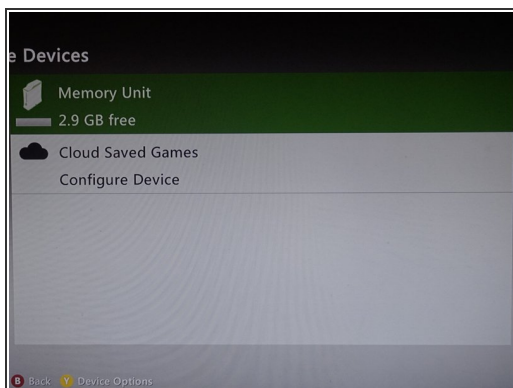
- **After removing the 4 bottom screws**, remove the bottom cover. The top of the drive will come off first. **Note: Open the drive where the spring will not get lost.**
- **After removing the top of the drive**, remove the drive from the enclosure. **Unopened drives will have more adhesive strength.**

### Step 4 — Disconnect and remove the hard drive



- Remove the **four T10 Torx** screws holding the cover and hard drive.
- After removing the screws, **slide the top cover off** and disconnect the drive.
- **Disconnect the hard drive** and remove it from the enclosure.

## Step 5 — Install the hard drive into the new enclosure



**⚠ If you do not use an official hard drive, you will need a WD hard drive, the Xbox hard drive sector security file and HDDhackr to partition the drive. Partition 2 must be restored manually.**

- After removing the drive from the old enclosure, open the new enclosure.
- Put the drive in the enclosure label side up. **Space may need to be added for 7mm drives.**
- Close the enclosure and install it in your console.