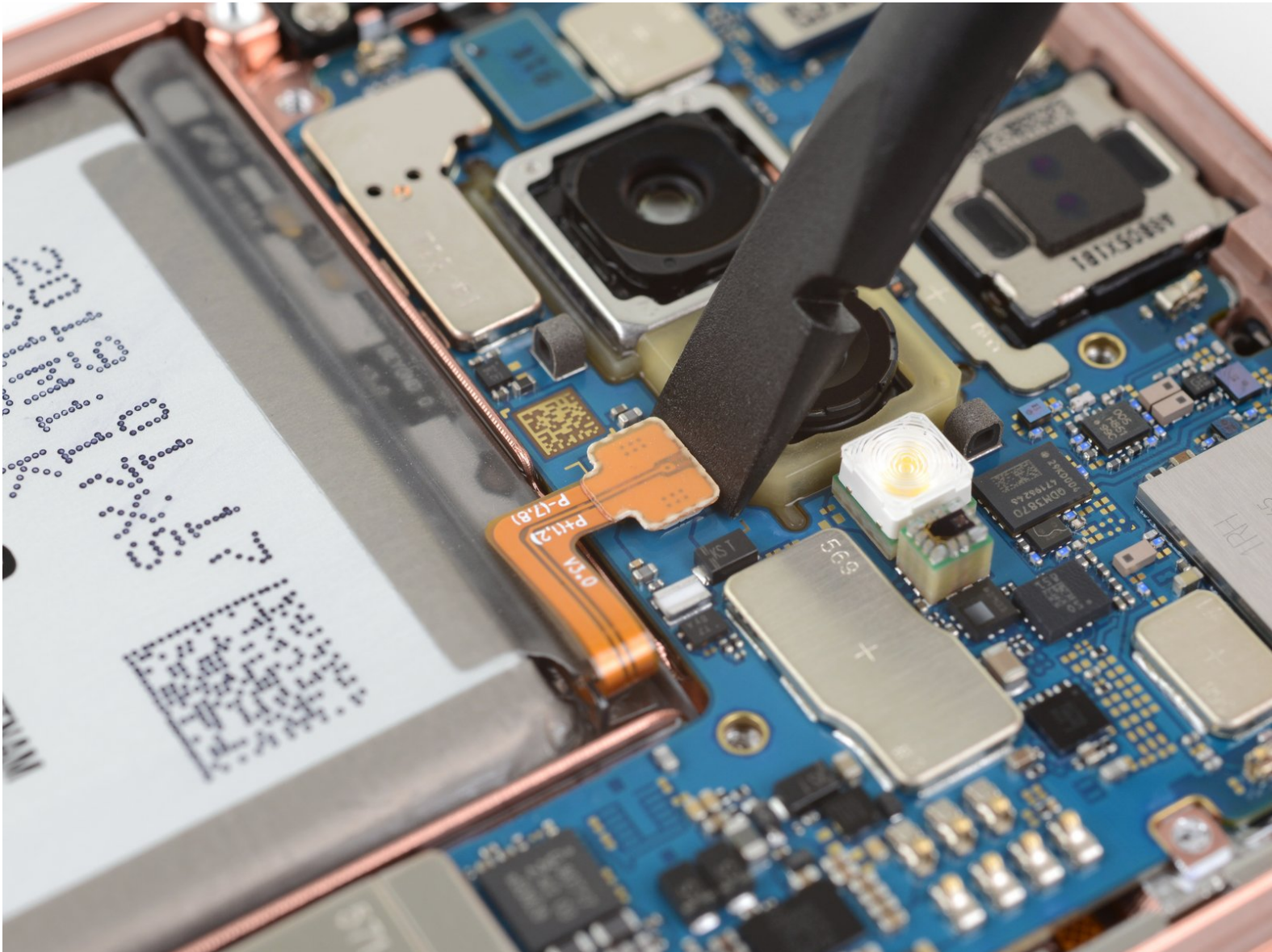




How to Disconnect Samsung Galaxy S10e Battery

Prerequisite-only guide to disconnect the battery in a Samsung Galaxy S10e for further repairs.

Written By: Adam O'Camb



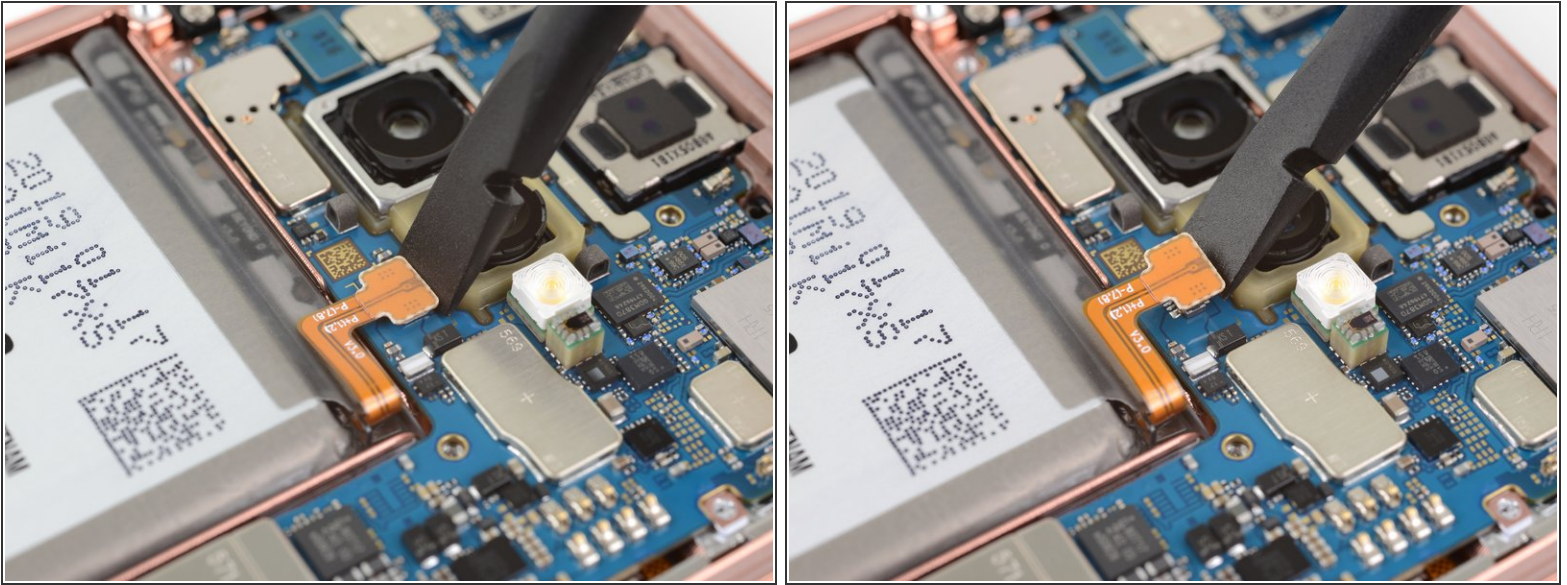
INTRODUCTION

Prerequisite-only guide to disconnect the battery in a Samsung Galaxy S10e for further repairs.

TOOLS:

- [Spudger](#) (1)
-

Step 1 — How to Disconnect Samsung Galaxy S10e Battery



- Use the flat end of a spudger to pry the battery connector straight up from its socket and disconnect it.

To reassemble your device, follow these instructions in reverse order.