



# How to Dry Wet Canon PowerShot SD850 IS Camera Components

Written By: iDeleted



---

## INTRODUCTION

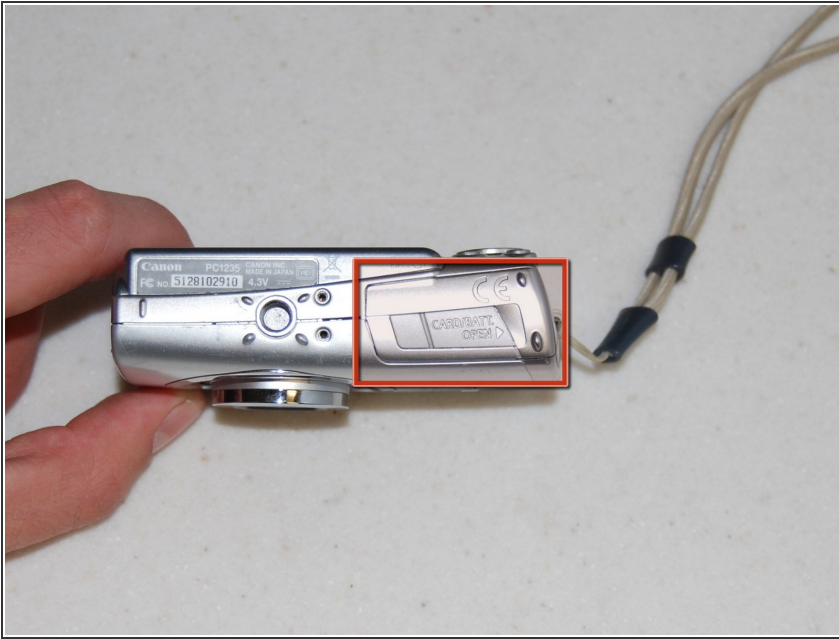
If your camera is wet, it is crucial to not turn the power on. Allow the camera to dry before assessing damage. Use this guide to access internal components to aid in the drying process.

---

### TOOLS:

- [Metal Spudger](#) (1)
  - [Phillips #1 Screwdriver](#) (1)
  - [Spudger](#) (1)
-

## Step 1 — Battery



- Identify the battery port on the underside of the camera.

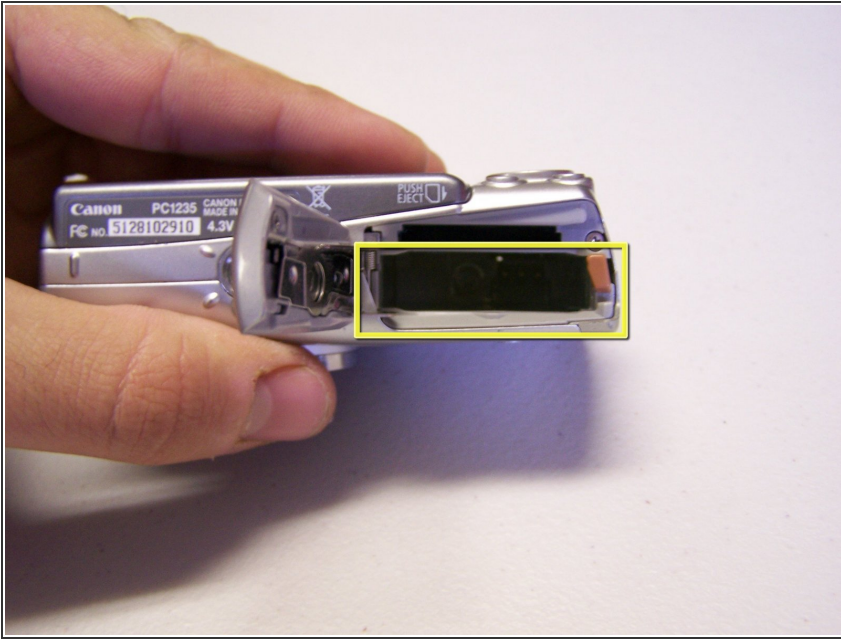
## Step 2



- Using your thumb, slide the port to the right and release.

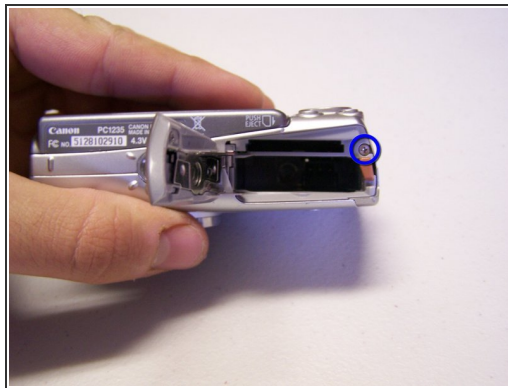



### Step 3



- Remove the battery.

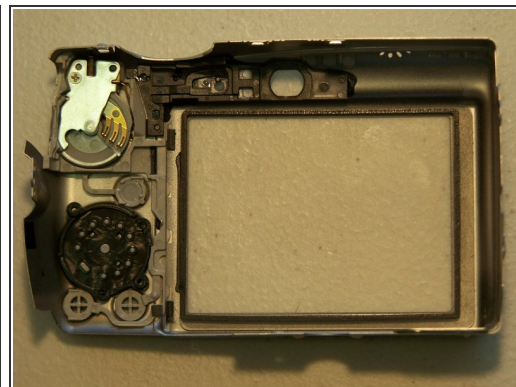
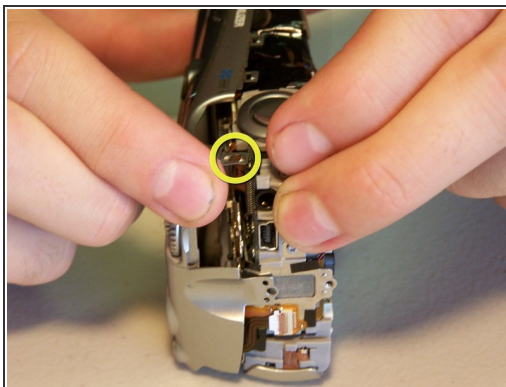
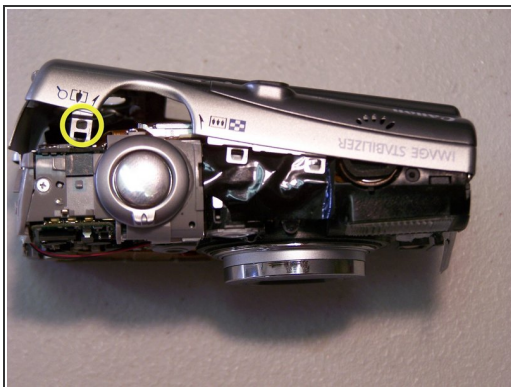
### Step 4 — Housing



 To avoid severe electric shock do not remove or tamper with internal camera flash components. An electrical capacitor is attached to the flash that can discharge if contact is made.

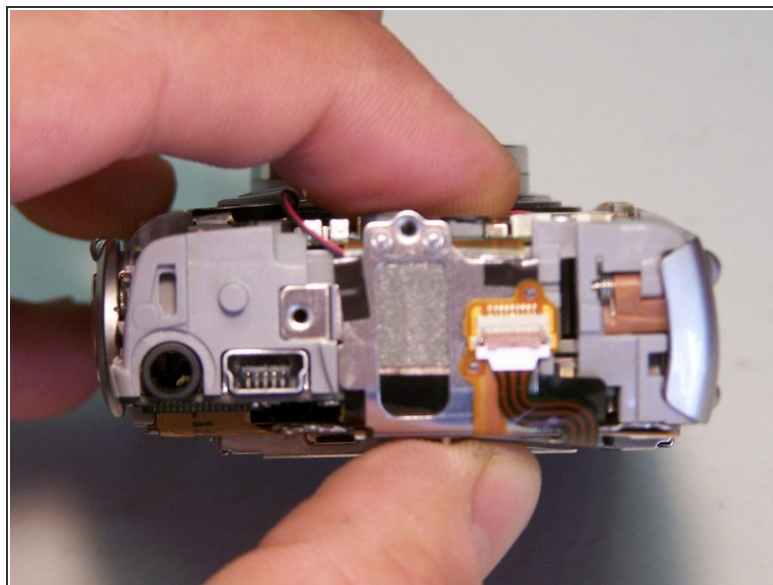
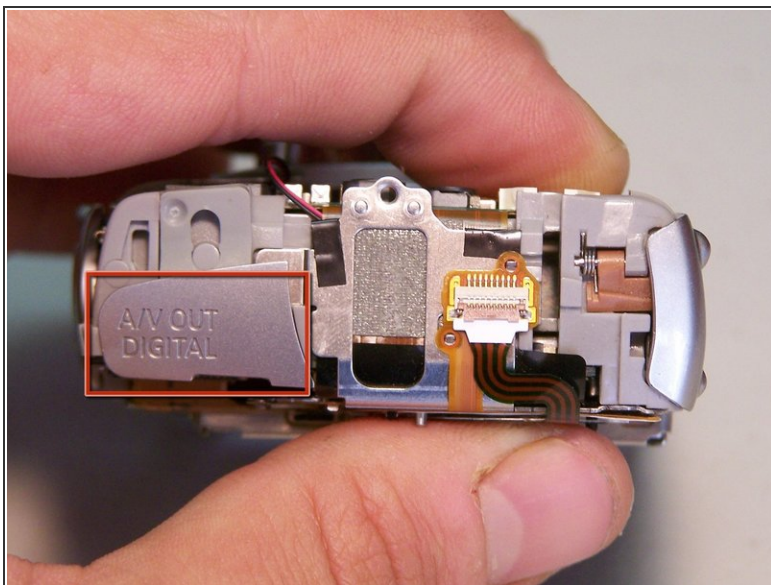
- Remove the two side screws, indicated by the red circles, using a Phillips #00 screwdriver.
- Remove the screw in the battery port, indicated by the blue circle, again using a Phillips #00 screwdriver.
- Remove the front face by gently peeling the housing away from the camera.

## Step 5



- Remove the back face by using a spudger to lift the tab highlighted in yellow
- Pivot the back face clockwise as seen in the second photo.

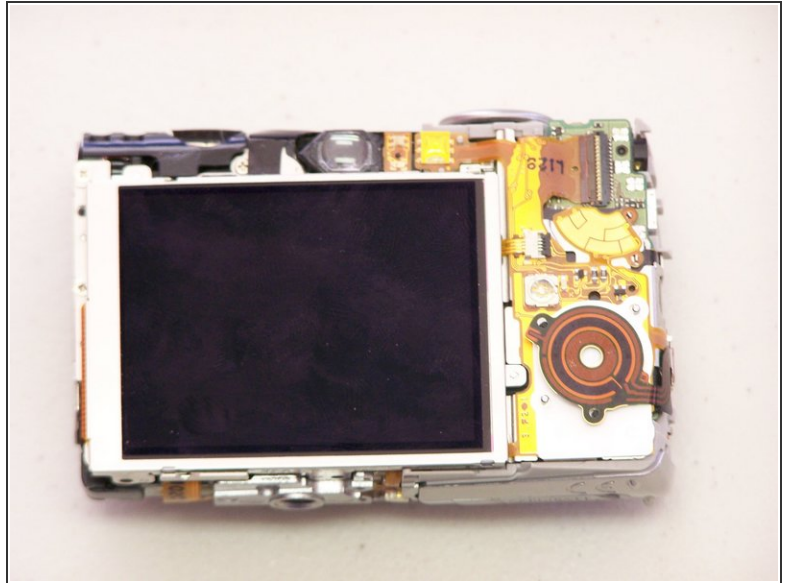
## Step 6




- Remove the A/V port cover [no tools are necessary]



## Step 7 — How to Dry Wet Canon PowerShot SD850 IS Camera Components



- Use compressed air to dry off camera's internal components.

 Use caution when performing this step. Compressed air could possibly damage components if sprayed directly at connections or other sensitive areas.

To reassemble your device, follow these instructions in reverse order.