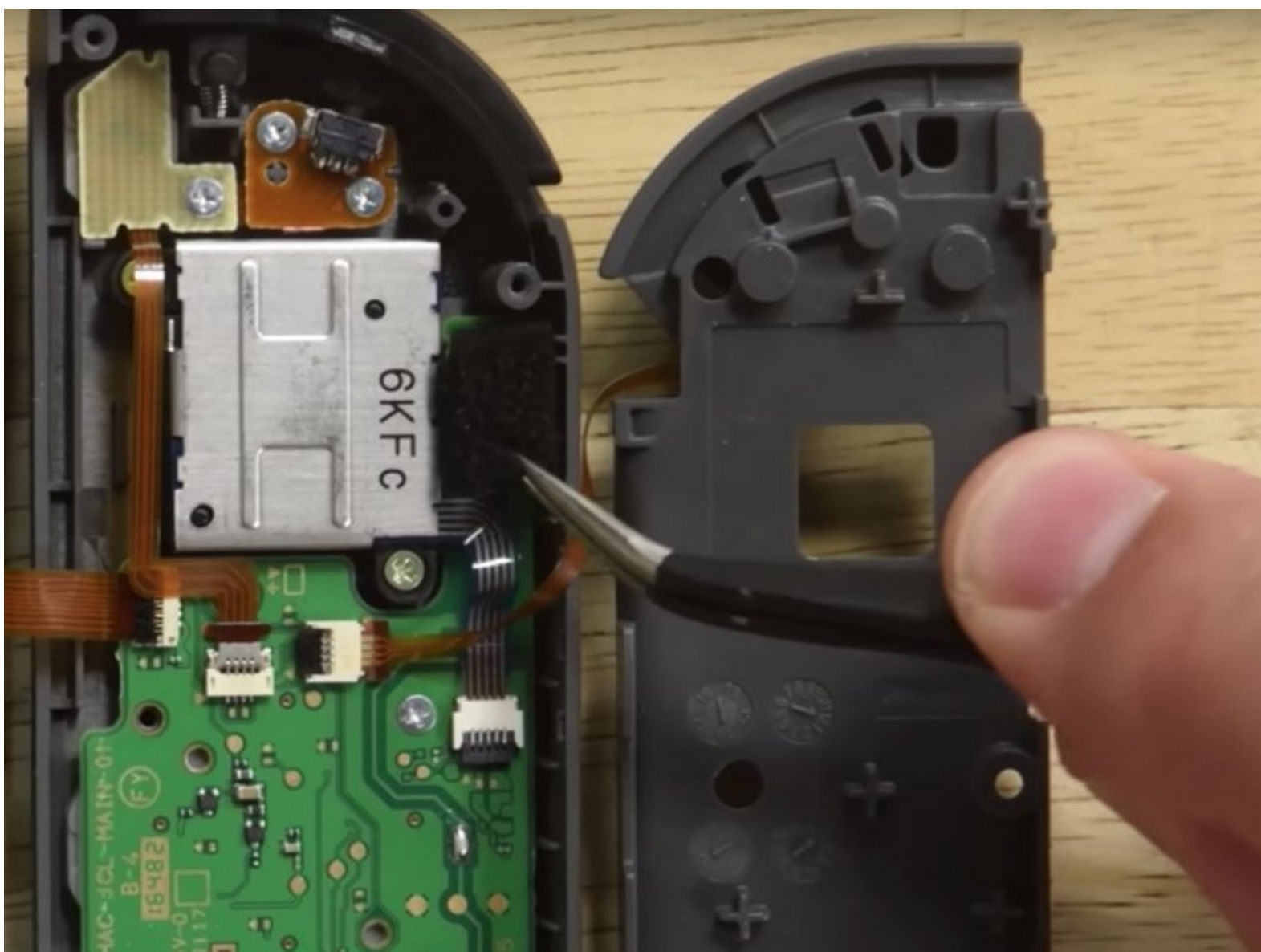




How to Fix Left Joy-Con Sync Issues

This guide will show you an easy modification you can make to your left Joy-Con to fix sync issues with the Nintendo Switch console.

Written By: Taylor Dixon



INTRODUCTION

Some of Nintendo's first-batch left Joy-Con controllers are notorious for sync issues. This is due to a minor design flaw, and can be remedied with a small piece of conductive foam that can be often be found in old packaging around the house!



TOOLS:

- [Tri-point Y00 Screwdriver](#) (1)
- [Phillips #00 Screwdriver](#) (1)
- [iFixit Opening Picks set of 6](#) (1)
- [Spudger](#) (1)



PARTS:

- [Conductive Foam](#) (1)

To reassemble your device, follow these instructions in reverse order.