



How to Fix a Ripped Stuffed Animal

This is a guide about how to repair a stuffed bear that has been ripped and lost some of its filling.

Written By: Megan Nash



INTRODUCTION

Having a broken/ripped toy isn't much fun. So these instructions will help you fix your beloved stuffed animal.

In this case, a stuffed bear has been ripped by its legs and has lost some of it's stuffing. We will go step-by-step on how to refill it with stuffing and sew it up.

TOOLS:

- [Sewing Thread](#) (1)
 - [Sewing Needle](#) (1)
 - [Polyester Fiberfill Stuffing](#) (1)
 - [iFixit Tech Knife](#) (1)
 - [Utility Scissors](#) (1)
-

Step 1 — How to Fix a Ripped Stuffed Animal



- Use Polyester Fiberfill stuffing to fill the stuffed bear via rip. Add more stuffing for a firmer toy.

⚠ Do not overfill the toy, or it may rip again.

Step 2



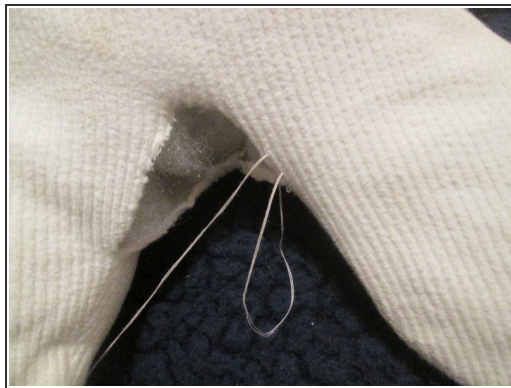
- Insert a thread through the eye of the needle (the hole) and tie it tightly to the needle.

Step 3



- Make a knot at the loose end of the thread.
- ⓘ This is so that the thread doesn't slip through the cloth while sewing up the bear.

Step 4



- Push needle through the end of the rip.
- Continue along the seam, putting the needle through both sides of the rip to create a stitch.

Step 5



- After the rip is sewn shut, tie the end of the thread by creating a knot
- Create the knot by wrapping the thread around the needle several times. Then pull the thread through to secure the knot at the base.
- Once is enough, but for more security, you can repeat this step twice.

Step 6



- Cut any excess thread and you're done!
- Enjoy your repaired stuffed bear!

To reassemble your device, follow these instructions in reverse order.