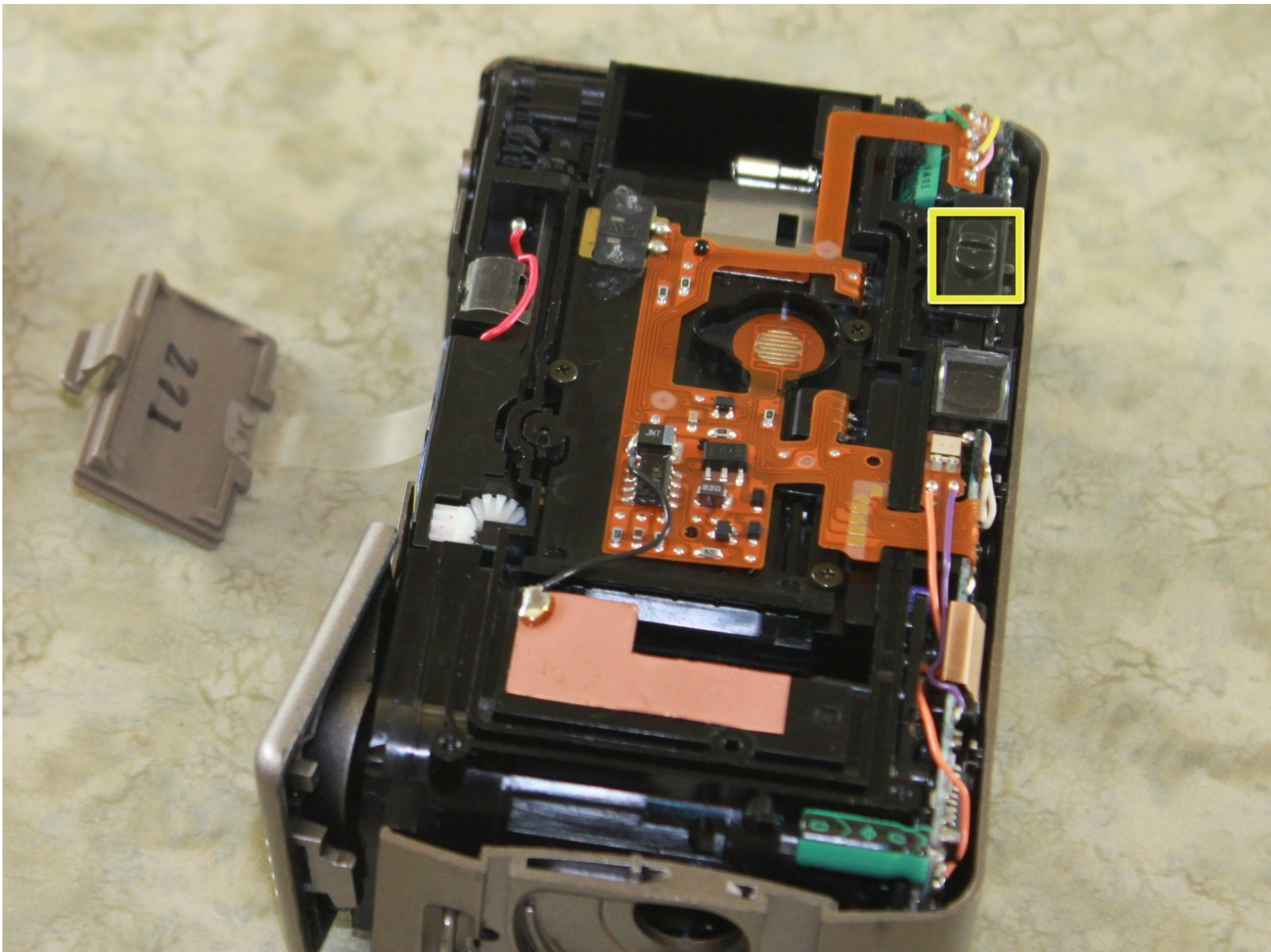




How to Fujifilm Endeavor 100ix

This guide provides instructions for repairing the CHP Mode Switch on the Fujifilm Endeavor 100ix.

Written By: Eric Nicolai



INTRODUCTION

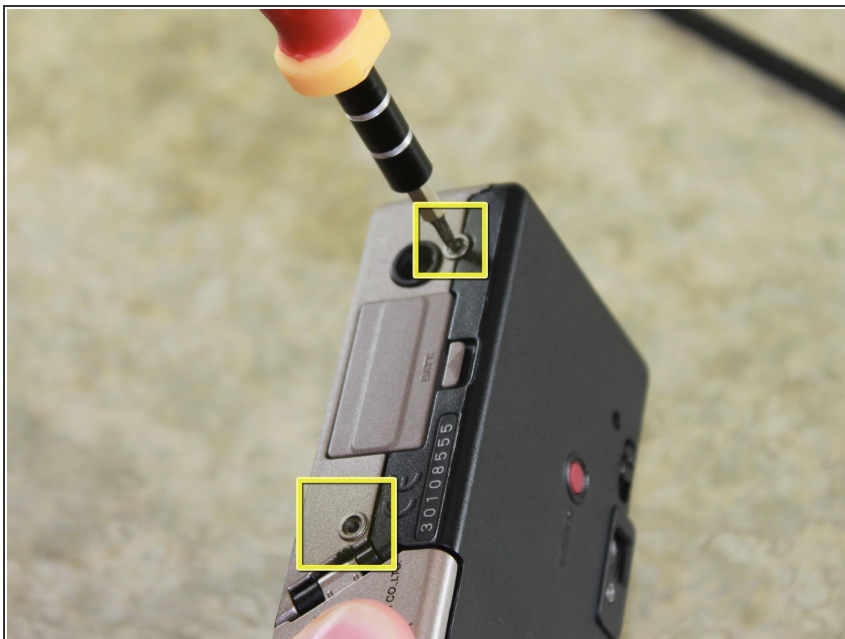
The following guide will help you to fix the CHP Mode Switch by taking off the back cover and cleaning around the switch.



TOOLS:

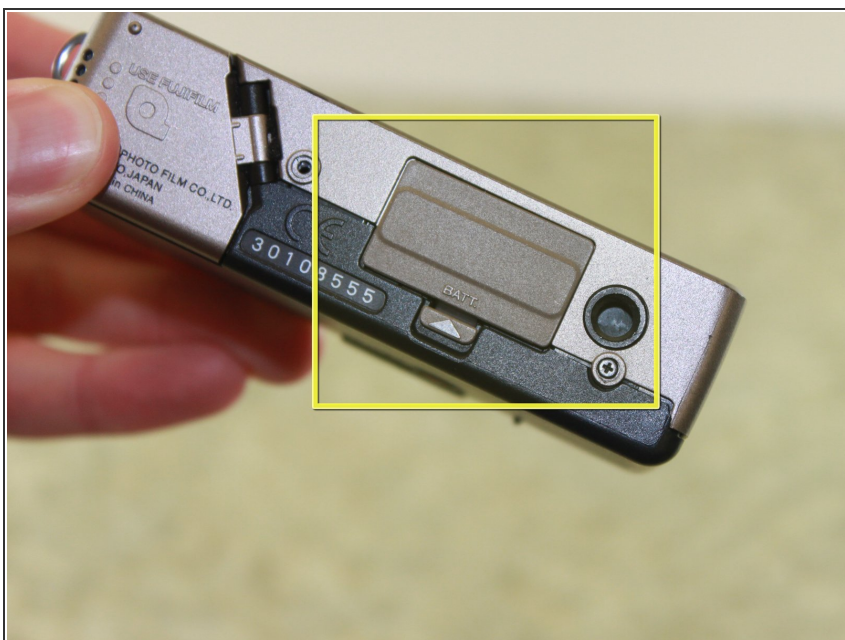
- [Phillips #00 Screwdriver](#) (1)
 - [Spudger](#) (1)
 - [Q-Tips](#) (1)
-

Step 1 — Outer Casing



- Locate and remove two 6.4mm screws on the bottom of the camera with a Phillips #00 screwdriver.

Step 2



- Locate the battery door.

Step 3



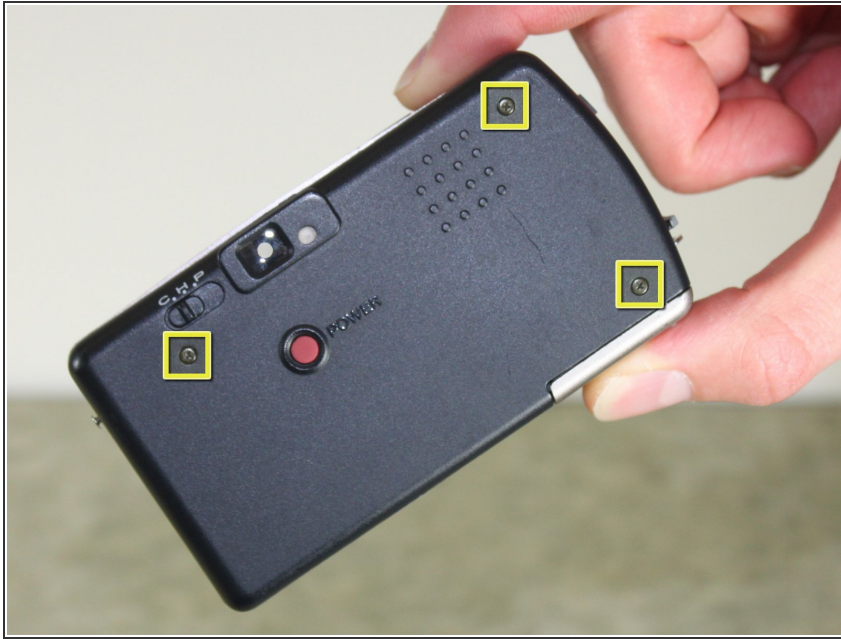
- Locate the latch on the battery door marked by the word "BATT." Use your finger to pry it open.

Step 4



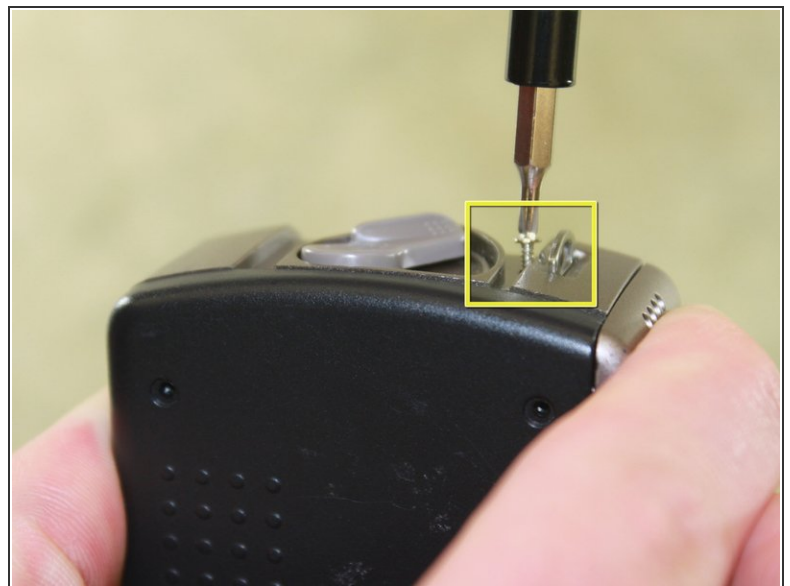
- Remove the battery from the camera by pulling the battery door outwards.

Step 5



- Locate and remove three black 3.80mm screws on the back of the camera with the Phillips #00 screwdriver.

Step 6



- Locate and remove the 6.4mm screws located on either side of the camera with a Phillips #00 screwdriver.

Step 7



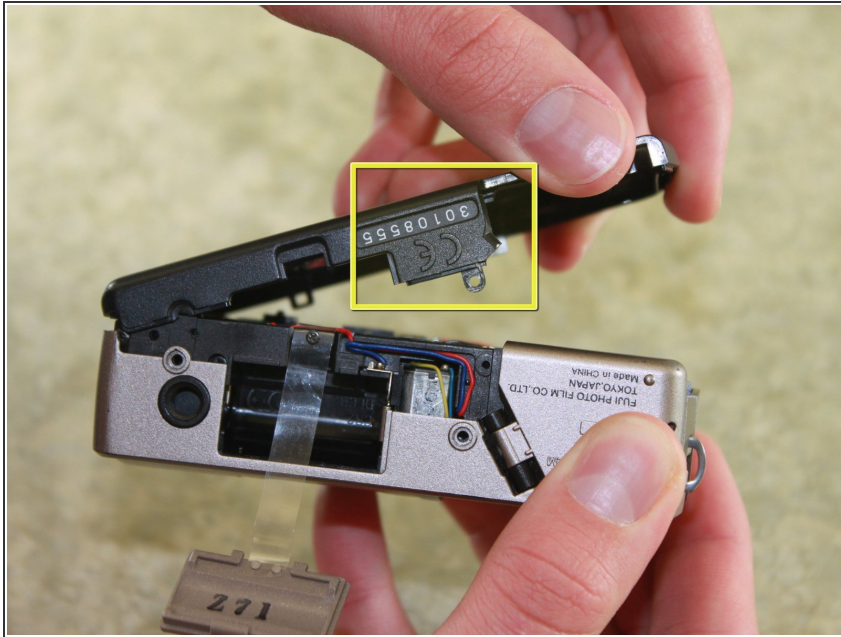
- Locate the film door latch located on the side of the camera.
- Insert the spudger under the latch.
- ⚠ Caution: Be careful during the following step in order to not break any parts within the camera. Prying the latch in any other direction than perpendicular may result in broken parts.
- Pry the latch upward, applying force perpendicular to the camera.

Step 8



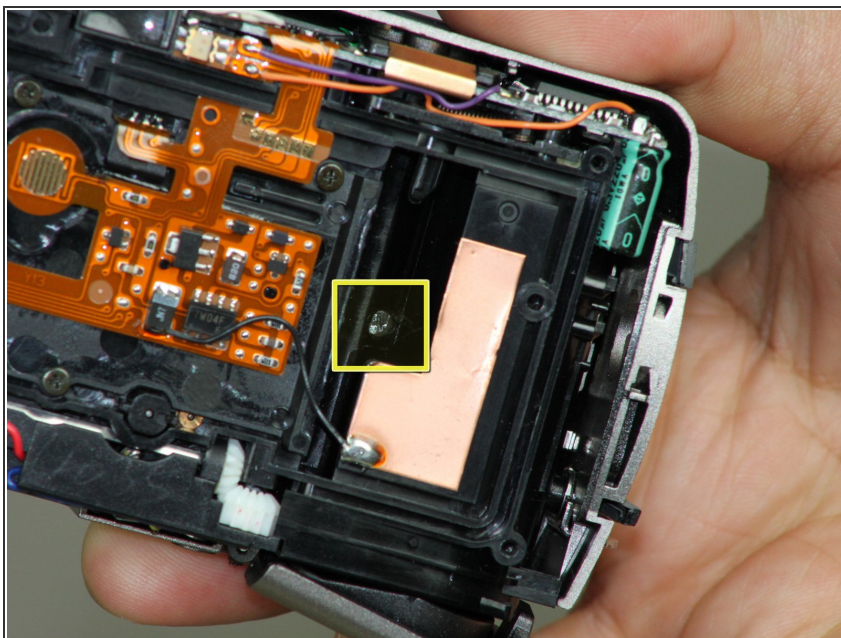
- Insert the flat edge of the spudger between the gold front casing and the black back casing.
- Pry the spudger upward until the black back casing snaps out and is dislodged on that edge of the camera.

Step 9



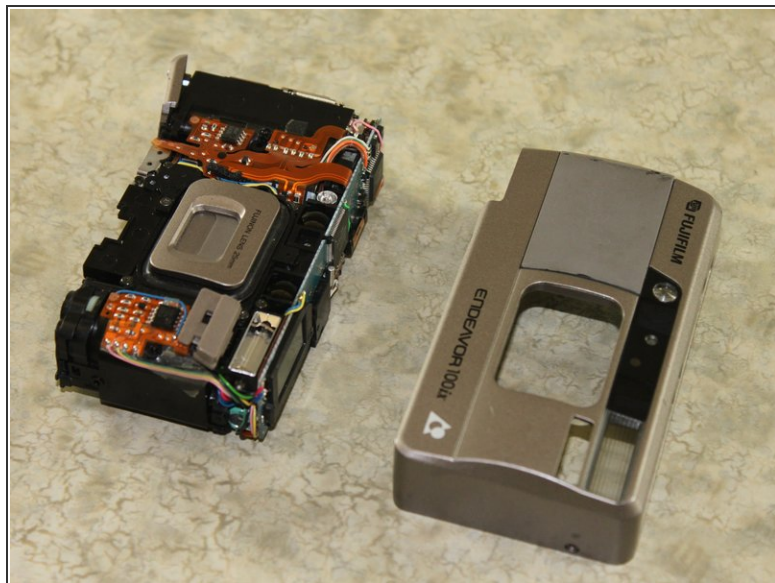
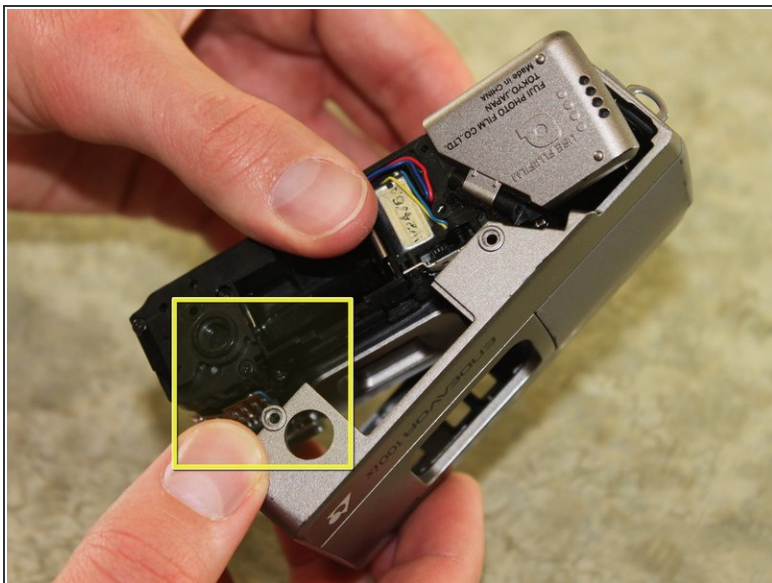
- Squeeze the camera by placing a thumb on the tab marked CE.
- Pull the back half of the camera firmly away from the camera body.

Step 10



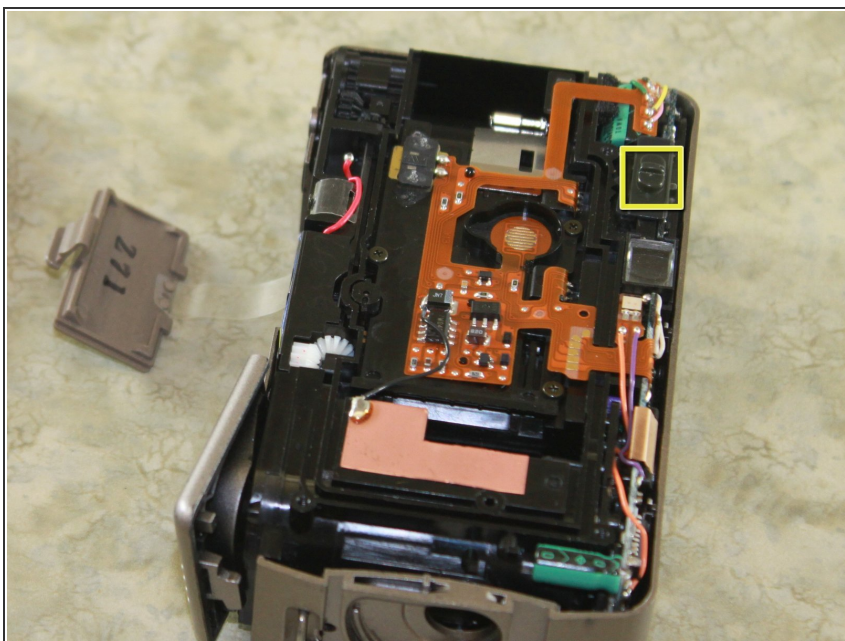
- Locate and remove the 3.80mm screw inside the film compartment with the Phillips #00 screwdriver.

Step 11



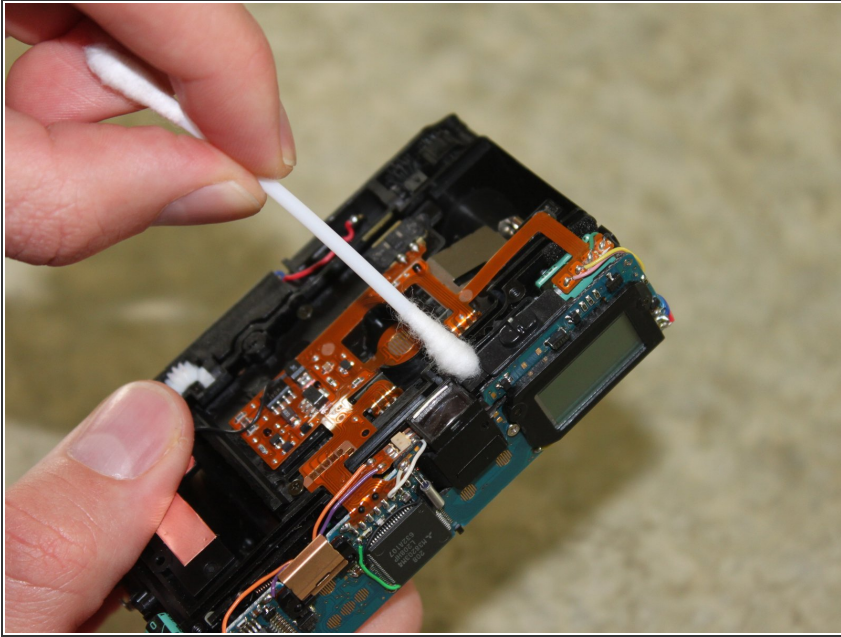
- Pull the front cover off of the camera by lifting the tripod tab over the tripod hole.

Step 12 — How to Fujifilm Endeavor 100ix



- Locate the CHP Mode Switch.

Step 13



- Remove any visible debris that may be blocking the CHP Mode Switch.
- Using the Q-tip **gently** wipe away any dust, dirt or residue, in and around the switch.
- Once you are sure the switch is clean, test it gently by sliding it back and forth between the 'C', the 'H', and the 'P'. If the switch is clean there should be very little resistance and the switch should glide smoothly from one mode to the next.

To reassemble your device, follow the instructions from the "Disassembling Fujifilm Endeavor 100ix Outer Casing" guide in reverse order.