



How to Hack Epson L200's Waste Ink Pad

This guide will show you how to hack the L200 and similar models waste ink pad.

Written By: Angela Penaherrera



INTRODUCTION

The Epson L200 and similar ink tank models are great, the ink replacements are very efficient and let you print much more for the money it costs replacing them. The big flaw is the waste ink pad.

The printer has a limited amount of times that it can clean the printer's nozzles and do a power ink flush to clean the printer heads. Once the printer reaches its limits its software will block you from printing on any computer. Now this is to protect the waste ink pad from overflowing with waste ink but the printer is designed in a way so that it is very hard to replace it.

First you need a software that is available online from many sites to reset the waste ink pad error counter on your printer, I only found it available for PC from this link: <http://appuals.com/step-step-guide-reset...>

and after that you can follow this guide and even look for youtube videos on how to do this.



TOOLS:

- [Tweezers](#) (1)
- [Syringe](#) (1)
- [Sharp knife](#) (1)



PARTS:

- [Aquarium Fish Tank Tubing kit](#) (1)
- [Small plastic bottle](#) (1)

Step 1 — How to Hack Epson L200's Waste Ink Pad



- A wild Epson Printer appears.
- Turn it around and look for a small door.

Step 2



- Locate the small door on the back and open it.
- You will find the tube that drains the waste ink to the ink pad.

Step 3



- As you can see, the pad is full with waste ink and is larger than the small door that gives you access to it, meaning it is not meant to be changed by mortals.

Step 4



- With a pair of tweezers gently pull the ink tube from the ink container.

⚠ Be careful not to grab it from the tube so as not to damage it.

Step 5



- With the help of a syringe or anything that can suck liquid, clean the remaining ink from the tube.
- I also went ahead and cleared the pad from as much ink as I could, it can buy you a bit more life span to the pad if you are in a hurry to print and not have the replacement items for this hack.
- ❗ I did not have a syringe at the time and used a desolder pump, takes way longer though.

Step 6



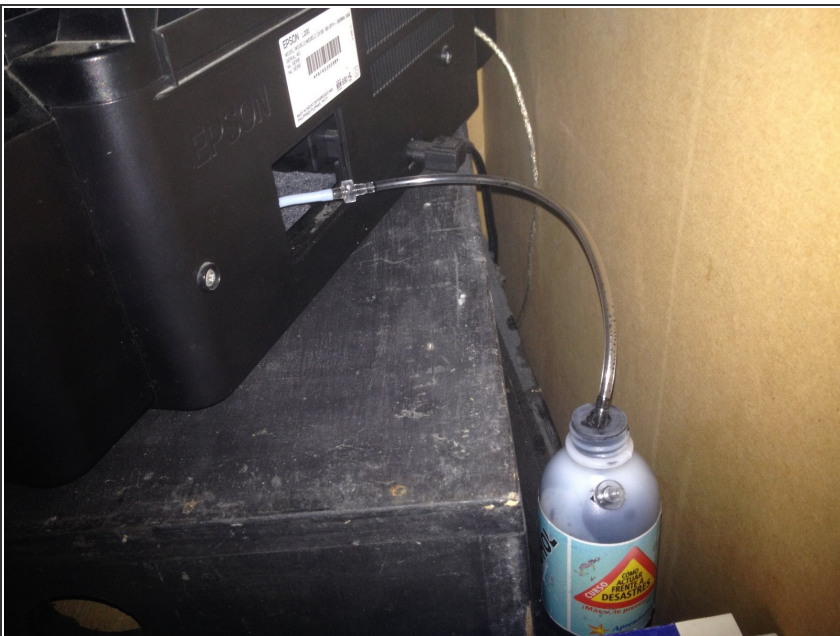
- Cut a 6" piece of the aquarium tubing and grab a connector.
- Connect the printer tube to the aquarium tubing you just cut with the connector.

Step 7



- Put a connector on the end of the aquarium tube and connect it to the top of the bottle. Make sure that there is no chance of spilling or else you will have a big black spot of ink under your printer.
- I inserted another connector on the top side of the bottle to release any pressure created by the ink coming in and the air in the bottle.

Step 8



- I placed the bottle in a lower elevation than the printer so that the ink can travel down the tube easier.
- ★ Check periodically to empty the waste ink bottle.

To reassemble your device, follow these instructions in reverse order.