



# How to Hard Reset the Lenovo A8

Your tablet not responding? The Hard Reset will momentarily disconnect the battery, forcing the tablet to turn off.

Written By: James Bailey



---

## INTRODUCTION

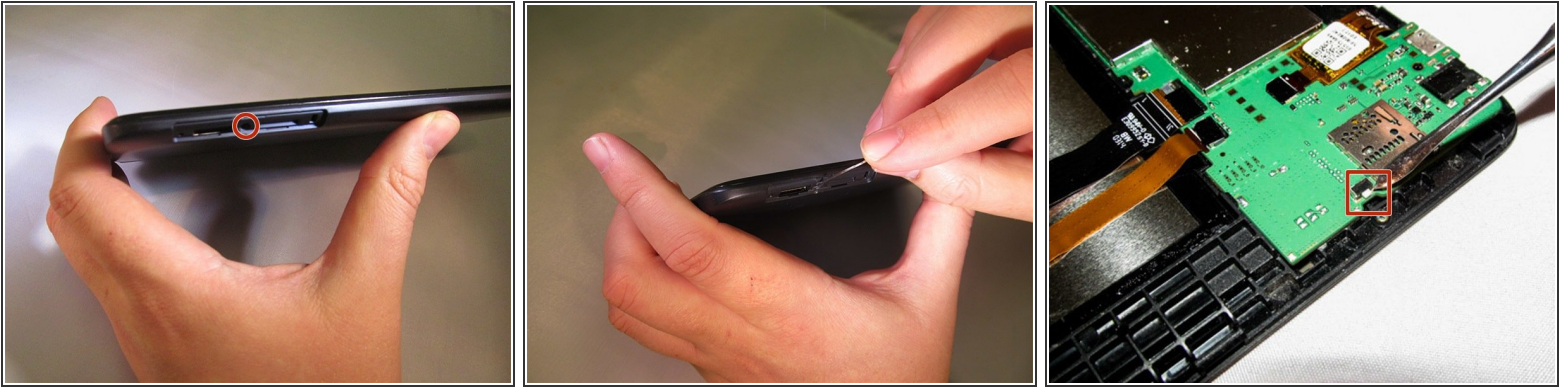
This guide shows you how to do a Hard Reset when your device is unresponsive.

---

### **TOOLS:**

- [Paper Clip](#) (1)
-

## Step 1 — How to Hard Reset the Lenovo A8



- Locate the reset button hole, housed between the memory ports on the side of the tablet.
- Using a paperclip, pin, or a toothpick, press the button.
- ⓘ No disassembly is required for this step. The interior picture is purely for information purposes.

To reassemble your device, follow these instructions in reverse order.