



How to Identify the Rear Camera Type for a Samsung Galaxy S7

The Samsung Galaxy S7 is currently shipped with two different camera parts. This will show how to identify the part in order to replace it properly.

Written By: William Chabot



INTRODUCTION

Unknown to the average user there are many different variants of the Galaxy S7. This guide outlines how to identify which rear camera you need in order to fix your Galaxy S7. If you replace the camera in your Galaxy S7 with the wrong type, you will get the "Camera Failed" message.



PARTS:

- [Galaxy S7 Rear Camera](#) (1)
-

Step 1 — Differences in Hardware



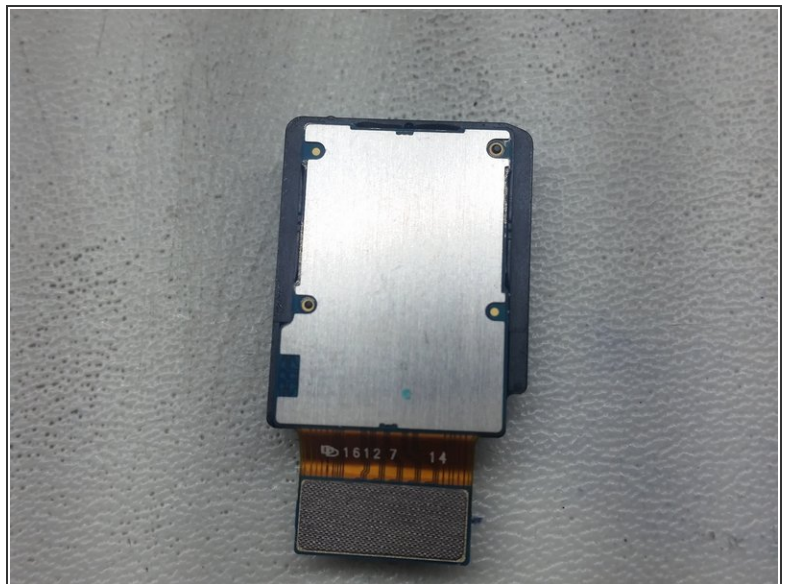
- Pictured left is a Samsung ISOCELL S5K2L1
- Pictured right is a Sony IMX260
- Currently different variants of the Samsung Galaxy S7 ship with different versions of the camera
- These cameras are NOT interchangeable. A Samsung camera must be replaced with a Samsung camera and vice versa
- Your handset will give the "Camera Failed" message if you replace the camera with the wrong type

Step 2 — Samsung ISOCELL S5K2L1



- This camera is identified by the lack of manufacturer identifiers
- It has a green colored flex cable near the connector

Step 3 — Sony IMX260



- This camera is identified by the "Sony" stamp on the flex cable
- This camera has a blue colored flex cable near the connector

Step 4 — Identification Through a 3rd Party Application



- Another way to tell the difference without opening the device is using an application
- AIDA64 can be downloaded from the Google Play Store
- Source: <http://www.androidauthority.com/galaxy-s...>

To reassemble your device, follow these instructions in reverse order.