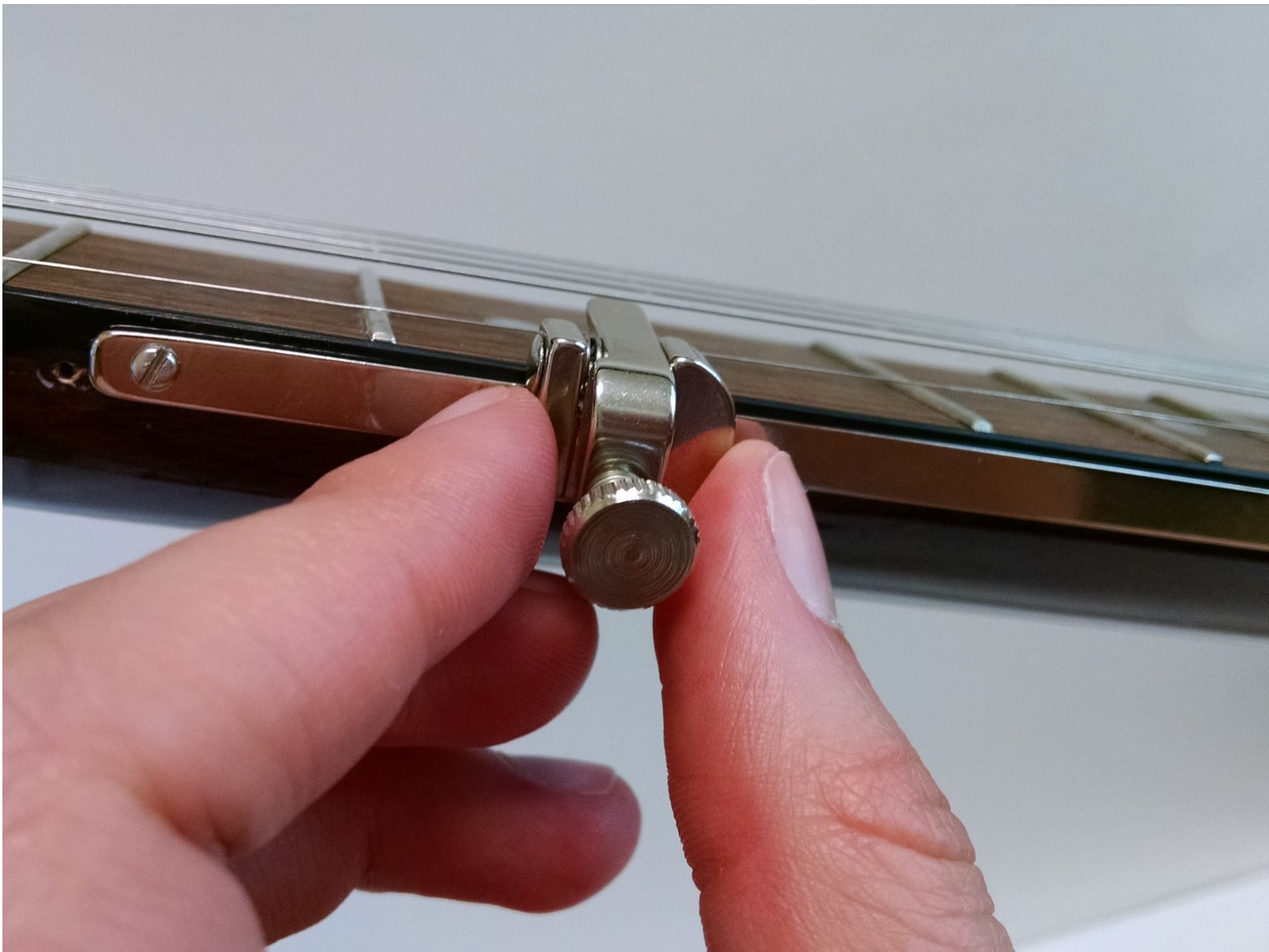




# How to Install a Fifth String Shubb Banjo Capo

Install a fifth string Shubb banjo capo on your beloved banjo.

Written By: Sara Wier



## INTRODUCTION

Use basic skills and handy work to install a capo that will expand the library of tablature available to your musical abilities. A fifth string capo is intended to adjust the tuning of the fifth (G) string on the banjo without having to constantly adjust the fifth string tuning key.

This installation process can be pretty intimidating, but if you approach it cautiously and double check your measurements, this fix can be empowering and rewarding.



### TOOLS:

- [Flathead Screwdriver](#) (1)
- [Cordless Drill](#) (1)
- [Marker](#) (1)
- [Ruler](#) (1)



### PARTS:

- [Shubb fifth string banjo capo](#) (1)
- [Banjo](#) (1)

## Step 1 — How to Install a Fifth String Shubb Banjo Capo



- Line the capo up along the fifth string side of the fretboard as shown.
  - Line the capo screw holes up about 12 mm from the fifth fret bar and about 4 mm from the face of the fret.
- ⚠ Be careful not to line the capo screw holes up directly below a fret bar or directly on top of a fret marker.

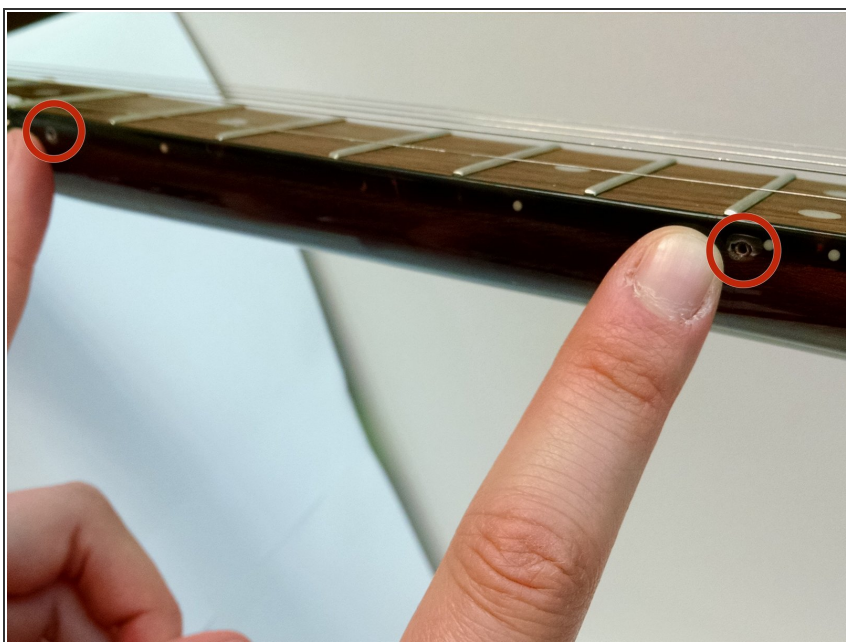
## Step 2



- Use the marker to mark where the screws should go.



### Step 3



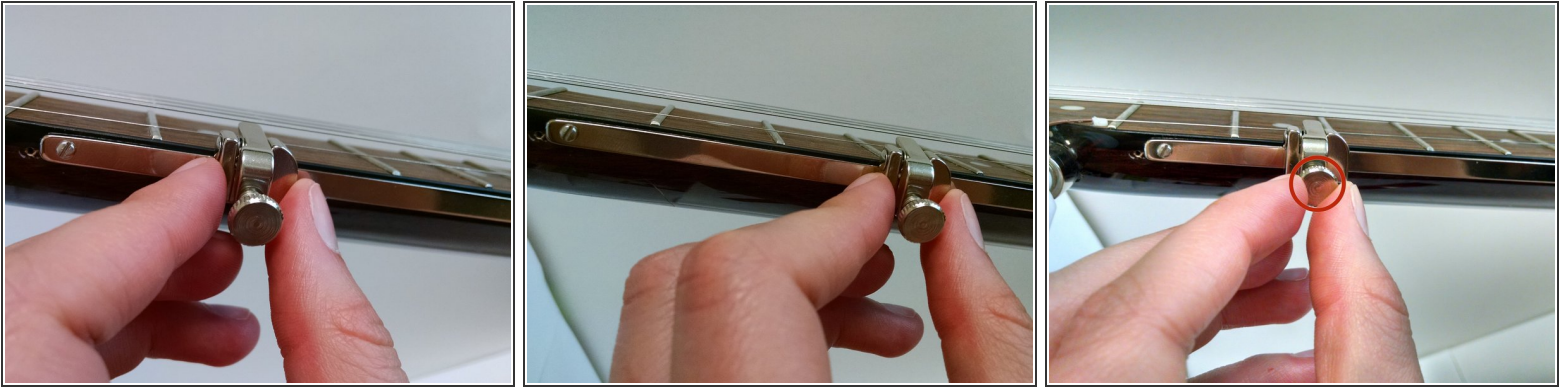
- Use the drill to drill both holes for the two screws.
- The holes should be drilled about 1 cm deep
- ⓘ You may need to borrow an extra pair of hands to help you stabilize the banjo while you perform this step.

### Step 4



- Use the flat head screw driver to insert and tighten the screws.

## Step 5



- To use the capo, slide the capo finger down to the desired fret.
- Then, tighten the spring knob.

For more information check out the Shubb fifth string capo website at:

<http://www.shubb.com/fs/index.html>