



# How to Open the Rocketfish RF-WHTIB-A Receiver

Prerequisite-Only This guide assists Rocketfish RF-WHTIB-A users on opening their receiver device.

Written By: Caitlin Charlton



---

## INTRODUCTION

Most technical problems with the Rocketfish RF-WHTIB-A receiver require opening up the device. This guide will show users how to successfully open up their device.

---

### **TOOLS:**

- [Phillips #1 Screwdriver](#) (1)
-

## Step 1 — How to Open the Rocketfish RF-WHTIB-A Receiver



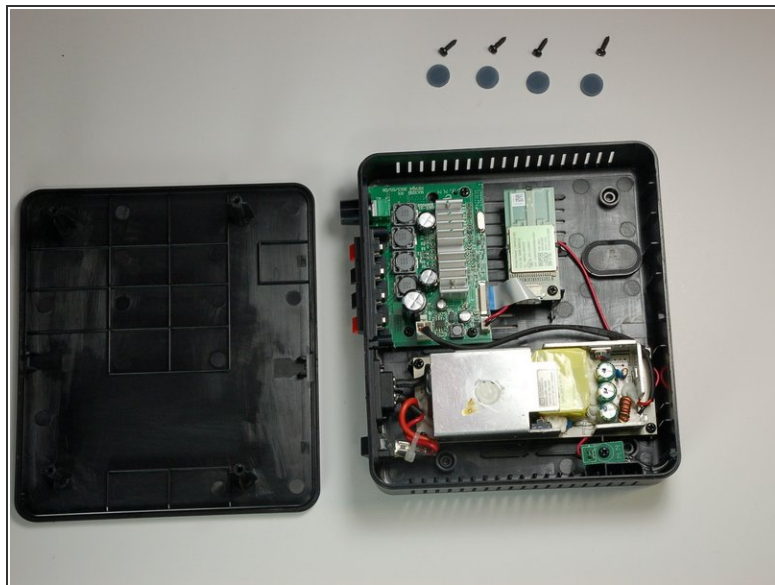
- Remove the 4 rubber tabs on the bottom side of the receiver.

## Step 2



- Unscrew the four 12 mm screws on the bottom side of the receiver.
- ⓘ Use a Phillips #1 screwdriver for this step.

## Step 3



- Remove top casing from the receiver.
- ⓘ The receiver top casing is difficult to remove. Internal clasps may have to be broken in order to remove the top casing (this will not effect the device's function)

To reassemble your device, follow these instructions in reverse order.