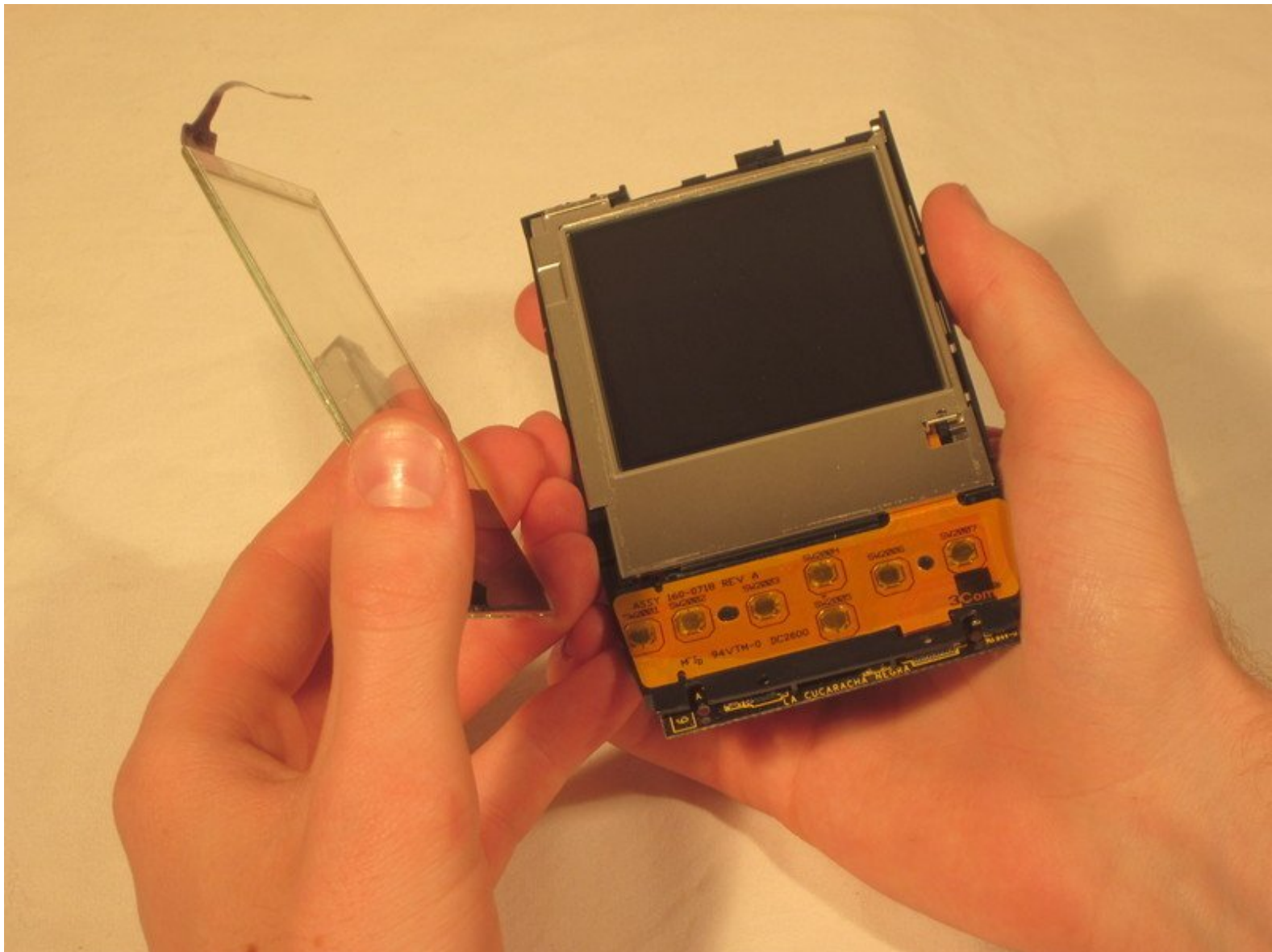




# How to Reassemble the Palm IIIc

These instructions will help you reassemble the Palm IIIc after tear down.

Written By: Angela Arthur

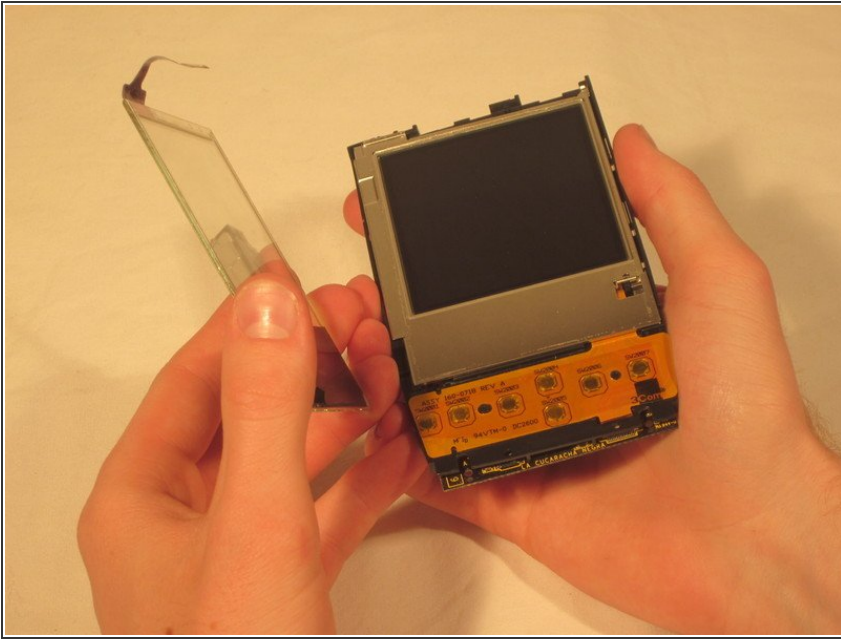




## TOOLS:

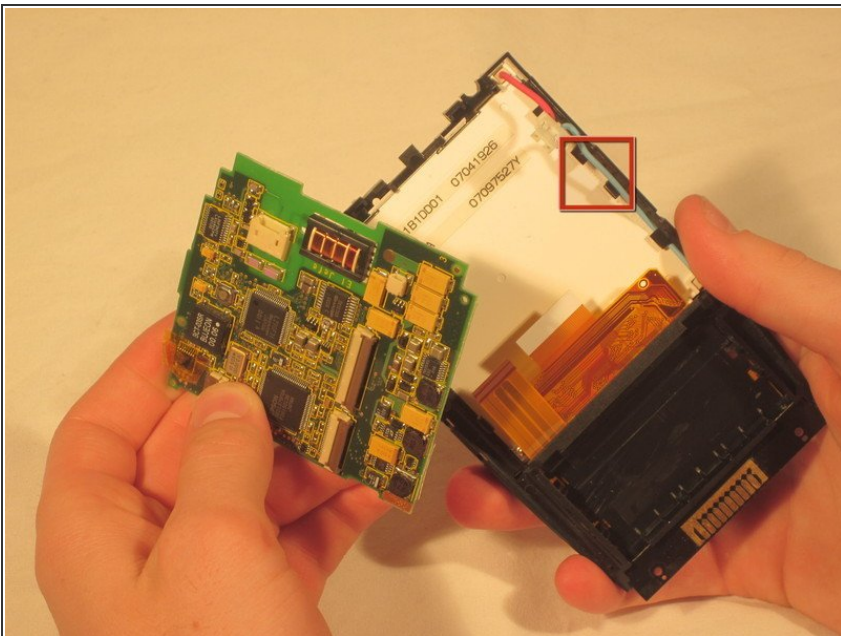
- [Phillips #00 Screwdriver](#) (1)
  - [Spudger](#) (1)
-

## Step 1 — How to Reassemble the Palm IIIc



- Reinsert the screen into the case that contains the buttons.

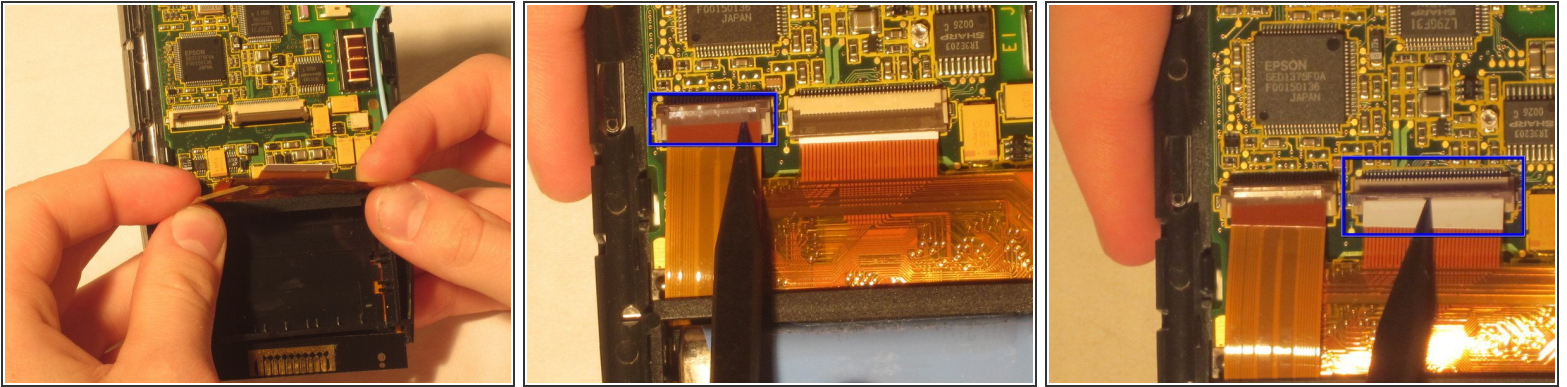
## Step 2



- Put the Motherboard back into casing from right to left.
- Make sure the black clips are securing the motherboard into the casing.

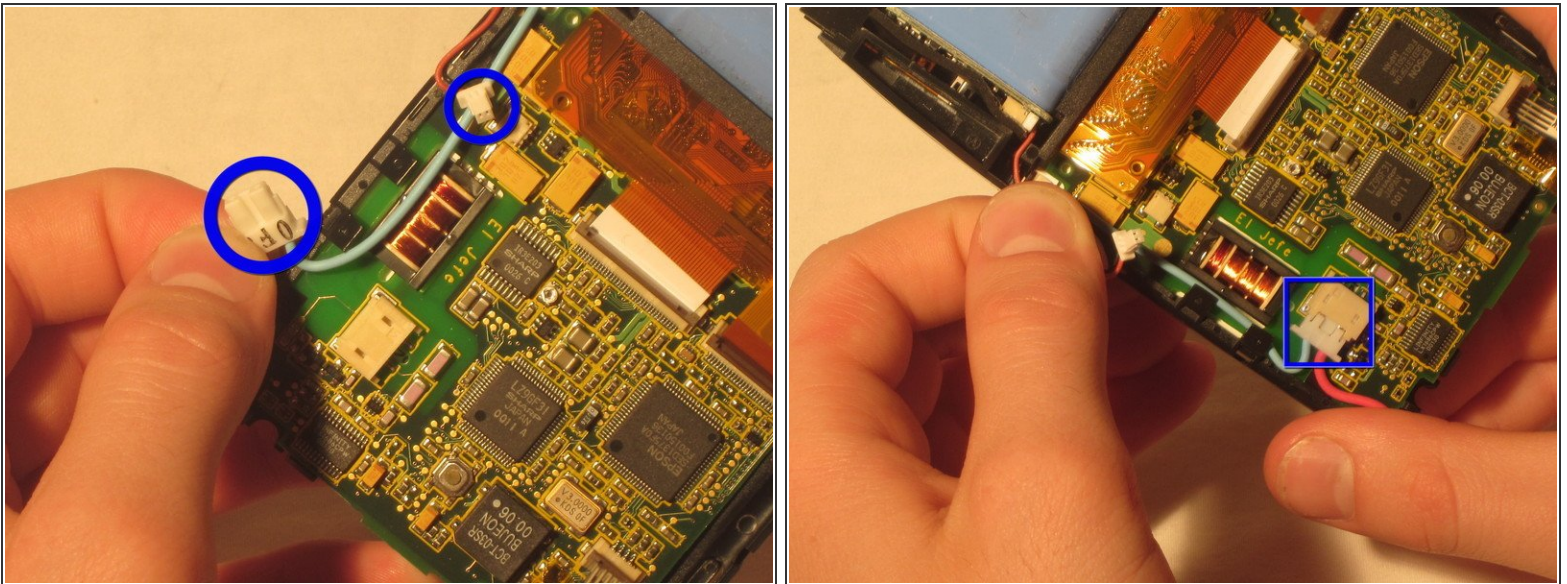


## Step 3



- Secure the bottom two ZIF connectors into their slots by opening the flap and inserting the ZIF connectors.
- Gently press down on the flap to secure the ZIF connector. This secures the screen and buttons to the motherboard.

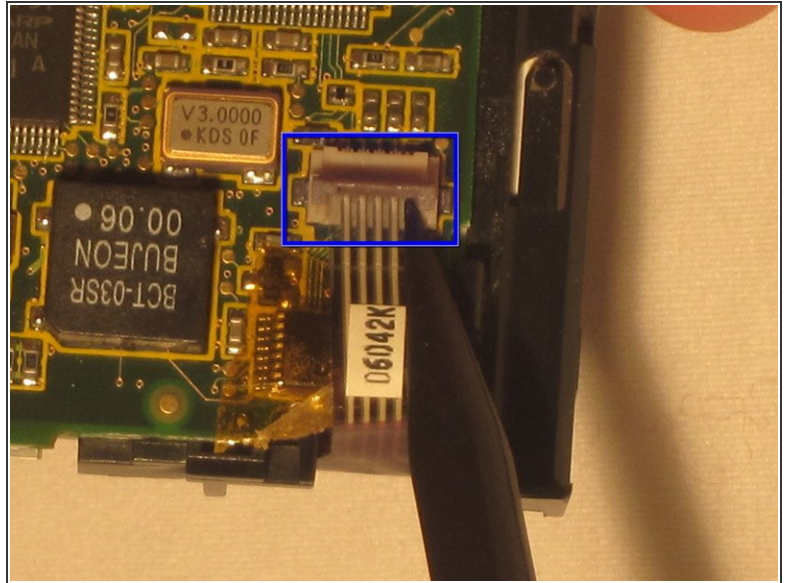
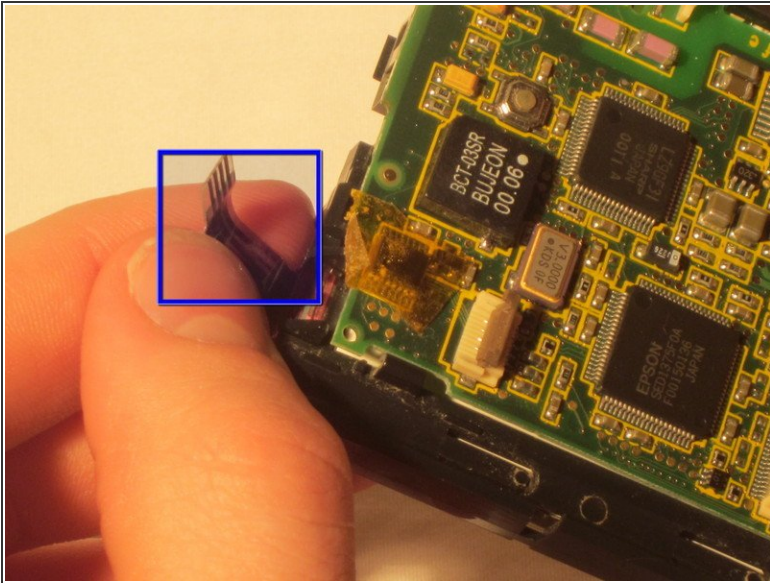
## Step 4



- Connect the blue and red screen cables to the beige box they were removed from.

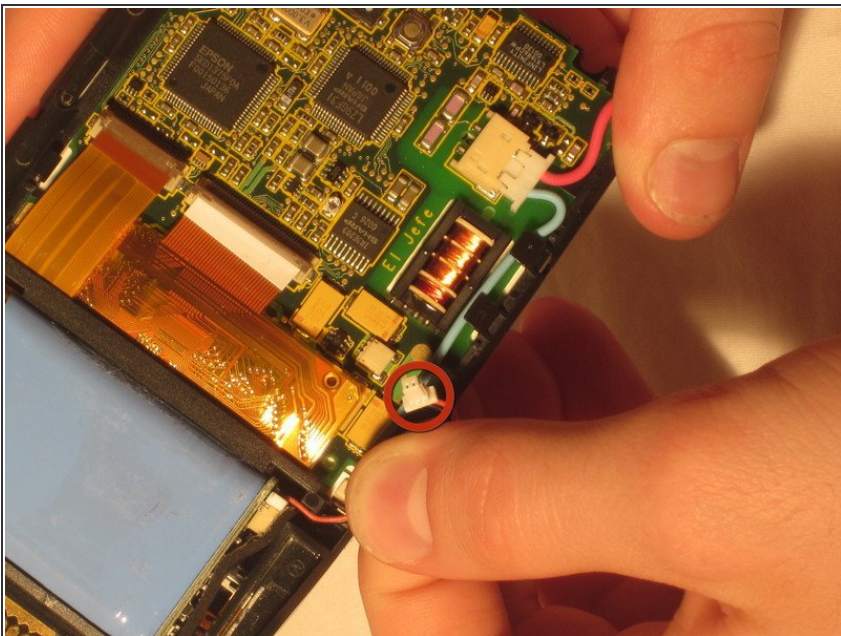


## Step 5



- Open the ZIF connector box at the top of the motherboard by gently pulling up on the flap.
- Insert the ZIF tab into the connector box.
- Gently press down on the flap to secure the ZIF tab in place.

## Step 6



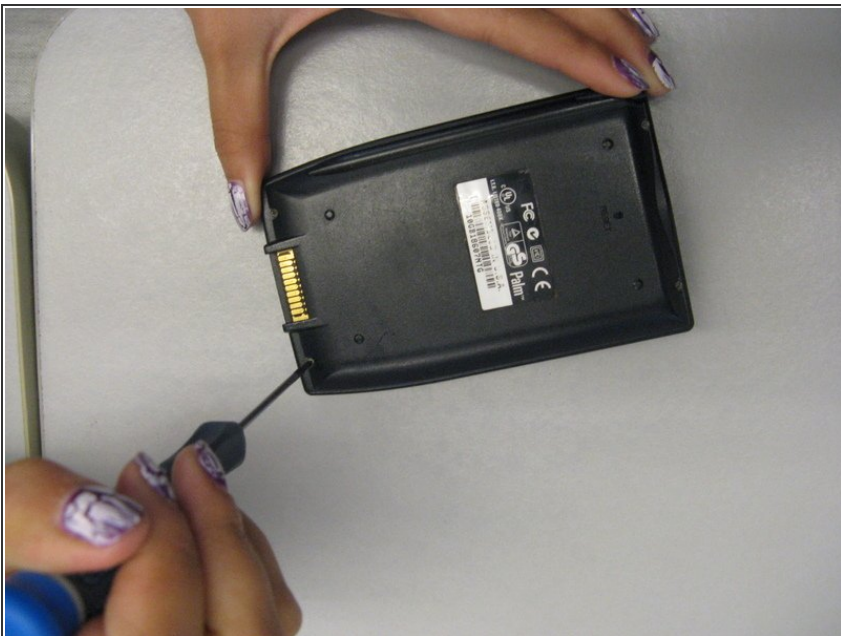
- Attach the white box on the end of the red cable connected to the battery into the connector box on the motherboard.

## Step 7



- Place the front and back covers around the casing containing the motherboard and screen.
- Before securing the covers, place the sensor in between the front and back cover at the top of the device.
- After the sensor is in place between the two covers, firmly secure the front and back covers.

## Step 8



- Replace the long screws at the top of the back case with the Philips head screwdriver.
- Replace the short screws to the bottom of the back case using the Philips head screwdriver.
- After the screws are in place, insert the stylus.

## Step 9



- Gently snap the flip cover back into place where it connects at the top of the Palm IIIc