



How to Reattach a Limb to a Stuffed Animal

How to replace an arm on a bear or other stuffed animal.

Written By: Jordan Chambers



INTRODUCTION

This repair will teach you how to reattach an arm onto a stuffed bear. You will use sewing techniques to follow through with this repair.



TOOLS:

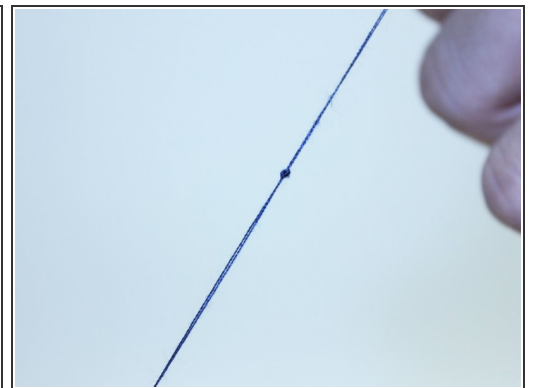
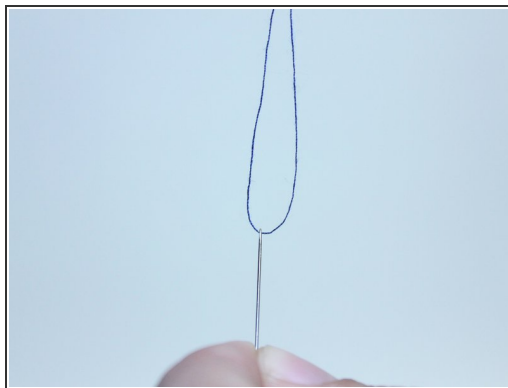
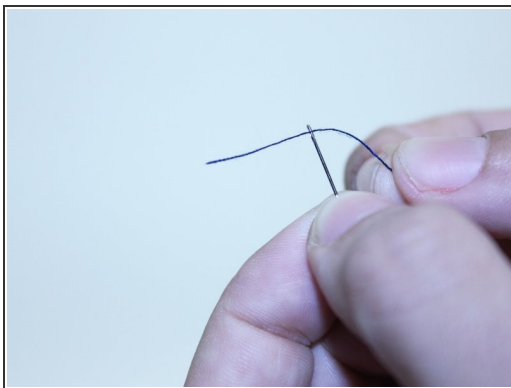
- [Utility Scissors](#) (1)
 - [Spool of Thread](#) (1)
 - [Sewing Needle](#) (1)
-

Step 1 — Teddy Bear and Materials



- Gather all materials
- Identify the area on the stuffed animal that needs sewn back together.

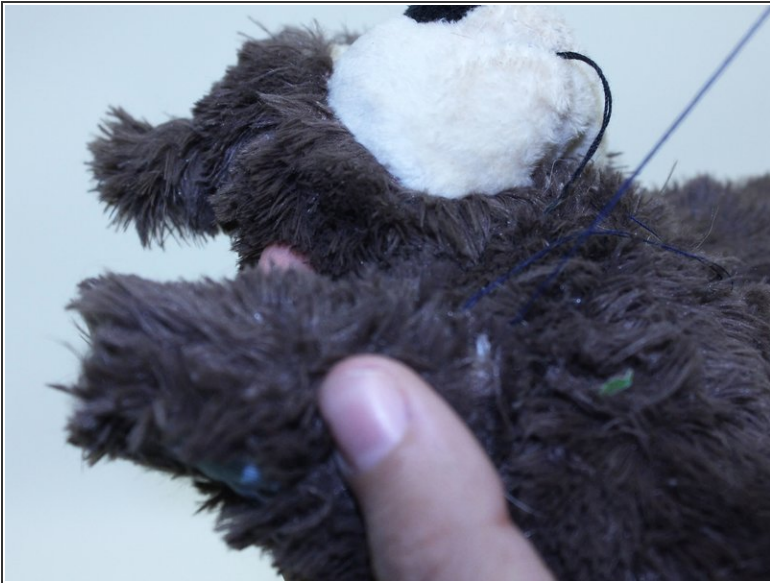
Step 2



- String one end of the thread through the sewing needles eye.
- Loop the thread so that the ends match at each end.
- Tie a double knot.

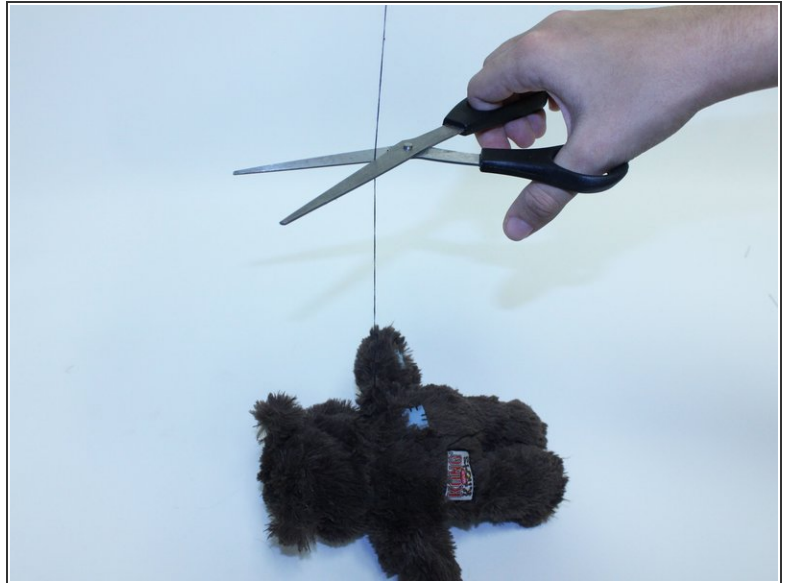
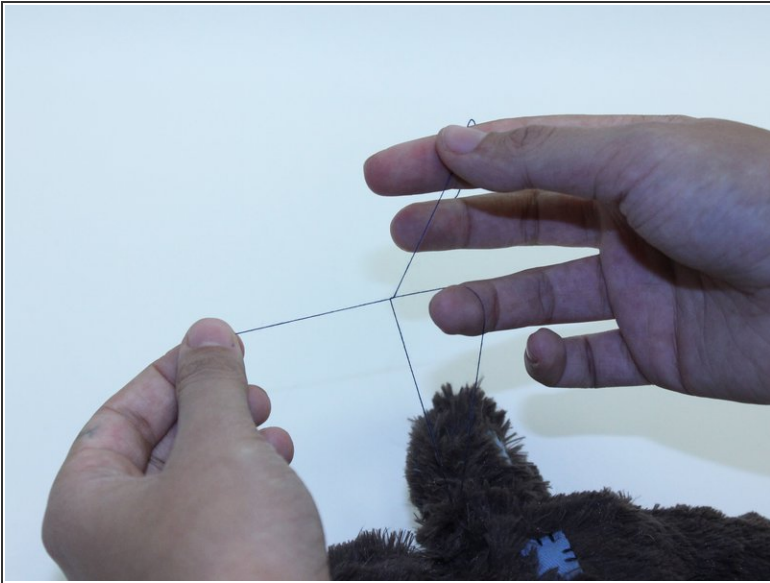
 Working with needles can be dangerous.

Step 3



- Weave the thread and needle through the limb and then into the body to attach.
- Pull the thread tightly to bring two pieces together, closing the hole. This creates an overcast stitch to secure the effected area.
- ⓘ Don't pull on the thread too tightly or this will break the thread and overlap the stitching.

Step 4



- Cut the excess thread, leaving at least 4 inches to allow you to tie a double knot. This will close the seam.

Step 5



- Enjoy your repaired bear, stuffed animal!