



How to Repair Corners of Drywall

How to repair corners of drywall in a residential property. Corners are the most vulnerable area of drywall to damage in homes.

Written By: Michael Cioffi



INTRODUCTION

Even the most mindful homeowner, or renter, can end up dinging a corner in their home. Vacuuming, or kids playing, and all of sudden there is chip in the the corner of the wall. Countless amounts of money go to repairs, or lost security deposits, that easily could have been averted if the person did the repair themselves. With a few items, that can be found at any big department store pretty cheap, a homeowner could save themselves a bunch of money. This guide will make the process effortless, and give a step by step process that will be easy to follow along. In the end, giving confidence to the user to maybe try other home repairs without a second thought.



TOOLS:

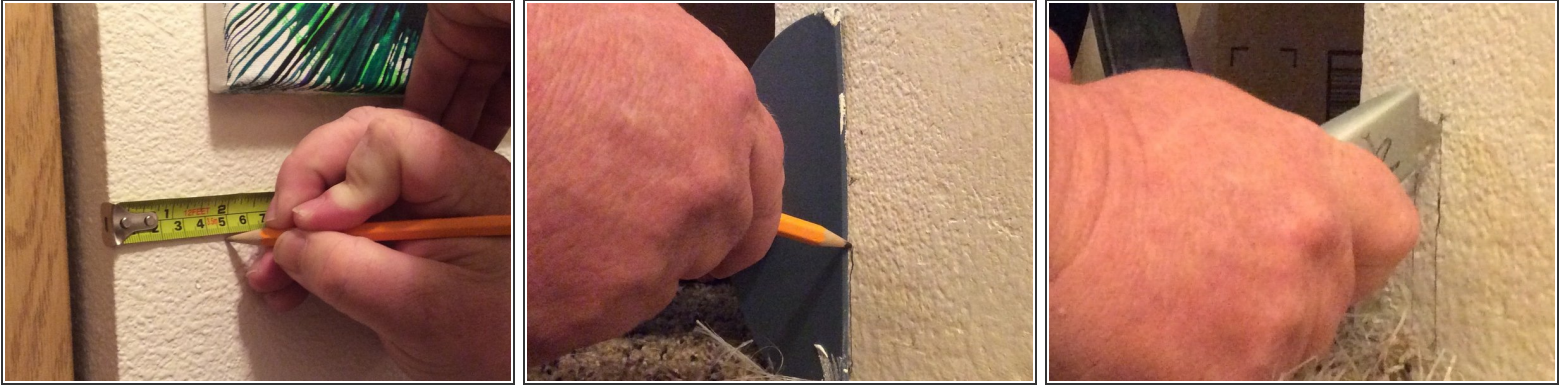
- [4 inch Drywall knife](#) (1)
- [6 inch Drywall Knife](#) (1)
- [Phillips #2 Screwdriver](#) (1)
- [Pencil](#) (1)
- [Tin Snips](#) (1)
- [Utility Knife](#) (1)
- [80 Grit Sandpaper](#) (1)
- [120 Grit Sandpaper](#) (1)
- [Tape Measure](#) (1)



PARTS:

- [Drywall screws](#) (1)
- [Corner Drywall Bead](#) (1)
- [Joint Compound](#) (1)

Step 1 — How to Repair Corners of Drywall



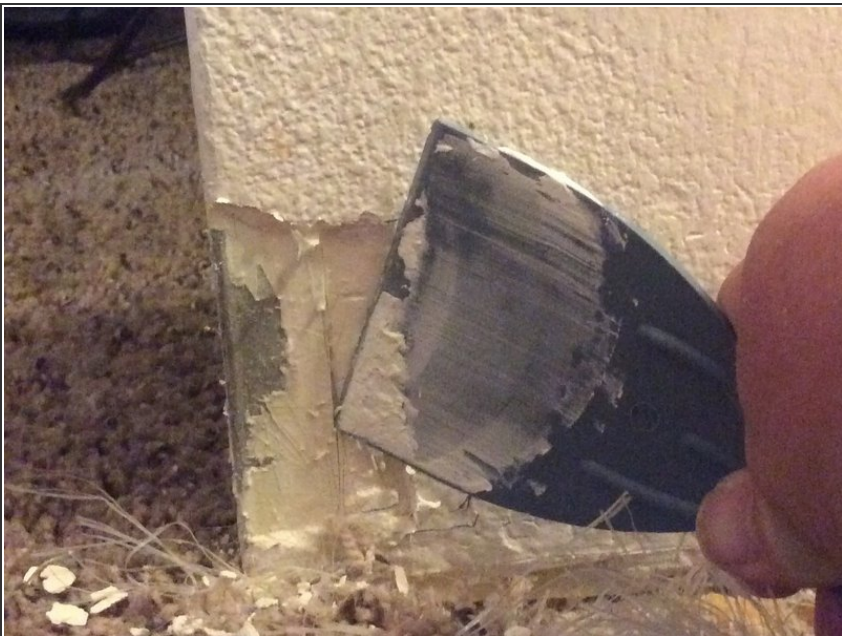
- Measure top and bottom of damaged section.
 - ❗ When replacing a corner bead, you must measure at least 1.5 inches from the corner.
- Use a straight edge between the the top and bottom and draw a straight-line connecting the marking.
 - ❗ You can even use the putty knife if the damaged section is not too long.
- Mark with a pencil, or cut lightly with utility knife.
 - ⚠ Use caution when using the utility knife as the blade is very sharp and may cause an injury.

Step 2



- Using your putty knife, dig out of the spackle inside your marking.
- ⓘ You need to get down to the metal, or vinyl corner drywall bead.
- ⚠ Use caution to not dig too deep.

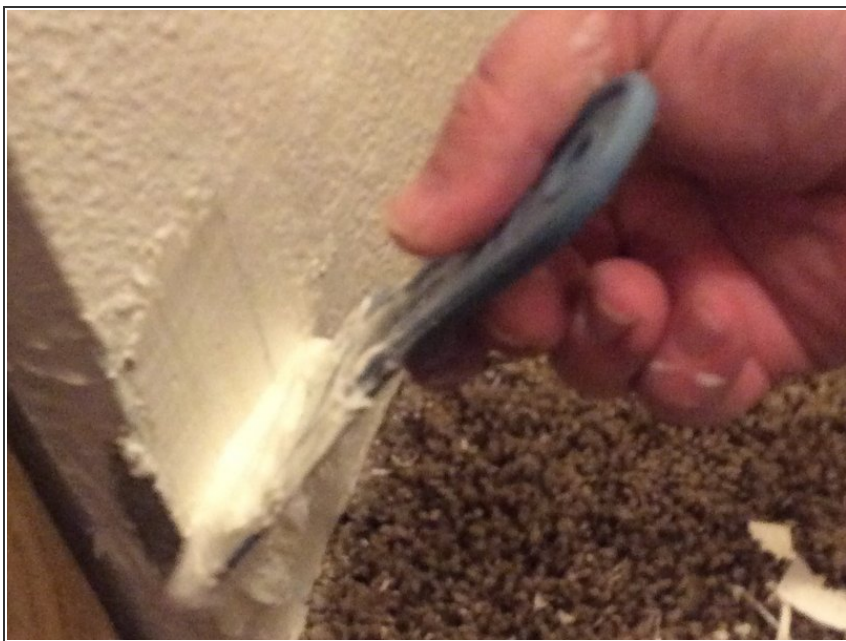
Step 3



- Unscrew screws in the section of bead that you are going to remove.
- ⓘ If it is a vinyl corner bead, then break taped underside with corner of putty knife carefully.
- Cut the metal corner bead with tin snips.
- ⓘ If Vinyl, then use your utility knife.
- Measure new corner bead and cut.

- Place new corner bead on corner and fasten in place using screws or tape.

Step 4



- Apply joint compound with a 4 inch putty knife.
 - ⓘ The more compound the better. It will shrink while drying.
 - ⓘ Do not worry about getting corners the perfect.
- Dry for 12 hours.

Step 5



- Sand area with 80 grit sandpaper.
- Wipe down with damp cloth, sponge, or paper towel.
 - ⓘ Be careful to not wet down the patch with too much water. Only minimum amount of dampness needed to wipe away sanding dust.
- Apply thinner coat of joint compound with a 6, or 8 inch putty knife.
 - ⓘ Pay attention to put pressure on the outside edge.
- Let dry for 2 hours.

Step 6



- Sand the area with 120 grit sandpaper.
 - ⓘ If needed, repeat Step 5 again.
- Paint the patched area to match wall

Now the corner drywall is ready to be painted and match the rest of the room.