



How to Repair a Broken Kitchen Faucet Pull-out Spray Head

Fix a broken or clogged kitchen faucet pull-out sink spray head.

Written By: Jodi Wright



INTRODUCTION

Replacing a kitchen faucet pull-out spray head is affordable and easy for individuals to do on their own. There are many different reasons a person may need to replace their kitchen faucet pull-out spray head. Often times a kitchen faucet pull-out spray head becomes clogged with mineral deposits or the handle on the nozzle breaks. This guide will assist readers in replacing their kitchen faucet pull-out spray head as well as the hose without having to seek assistance from a professional.

TOOLS:

- [Adjustable Wrench](#) (1)
 - [Small Needle Nose Pliers](#) (1)
 - [Flathead Screwdriver](#) (1)
-

Step 1 — Kitchen Faucet Pull-out Spray Head



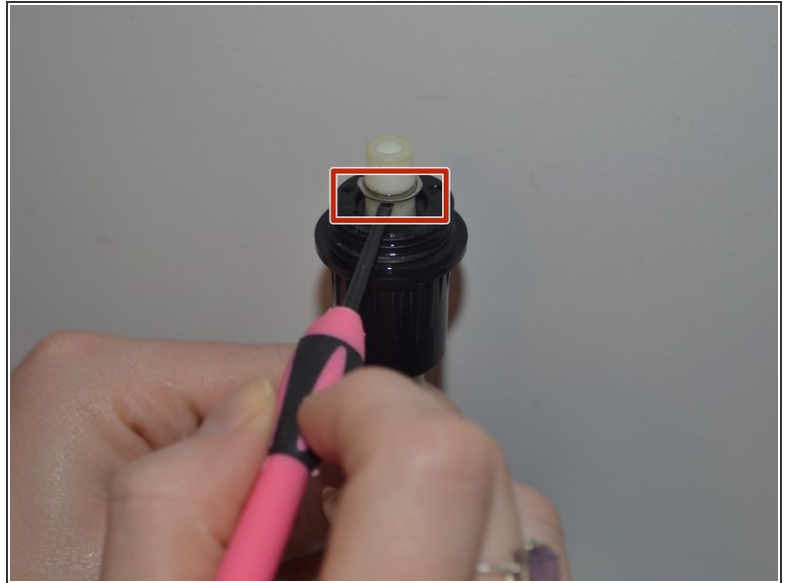
- Located underneath the sink is the water-control valve.
- Shut off the water supply by turning the water-control valve.
- ⓘ Not all water control valves are the same so some nozzles may vary.

Step 2



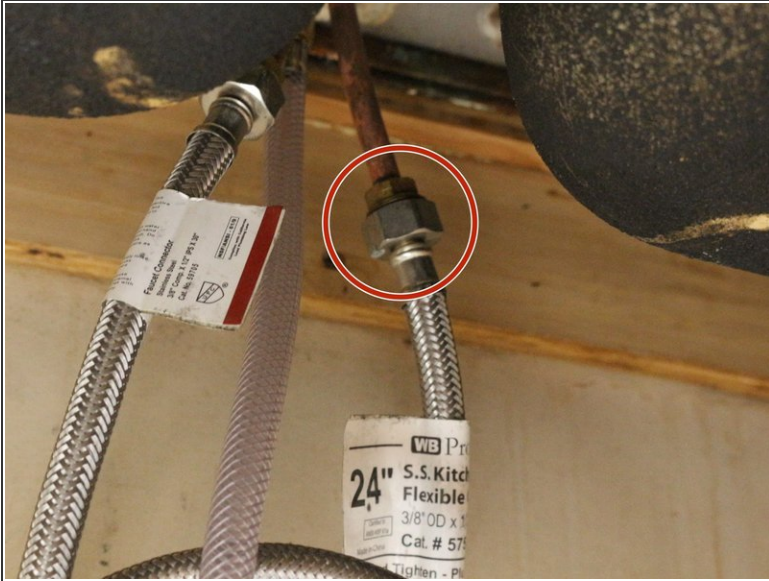
- Pull on the kitchen spray head nozzle to reveal the connected hose.
- Unscrew the kitchen faucet spray head nozzle counterclockwise off of the hose assembly.

Step 3



- Remove the rubber gasket from the hose to reveal the c-clip.
- Remove the c-clip that is located on the pull-out sprayer connection point with a small flat head screwdriver.
- ⓘ Do not discard the gasket. It can be reused unless damaged.

Step 4



- Pull on the sink faucet spray head from above the sink to find the main hose connection point to the water line located underneath the sink.
- Unscrew the hose from the main faucet's water line connection point.
 - ⓘ A wrench may be necessary in order to loosen the nut.
- Remove the hose from the sink sprayer location.
- Connect the new hose by pressing it into the connection point. Then screw hose back on clockwise.
 - ⓘ A wrench may be necessary in order to secure the end of the hose to the nut.

Step 5



- Apply plumber's tape to the male threads on the new sink sprayer head to avoid leakage.

To reassemble your device, follow these instructions in reverse order.