



# How to Repair a Vileda Turbo Mop Bucket Set

Turbo mop spinner action fails or slips on depressing pedal.

Written By: Paul



## INTRODUCTION

When you want to spin dry the mop the Red pedal goes to the floor as if something is broken.

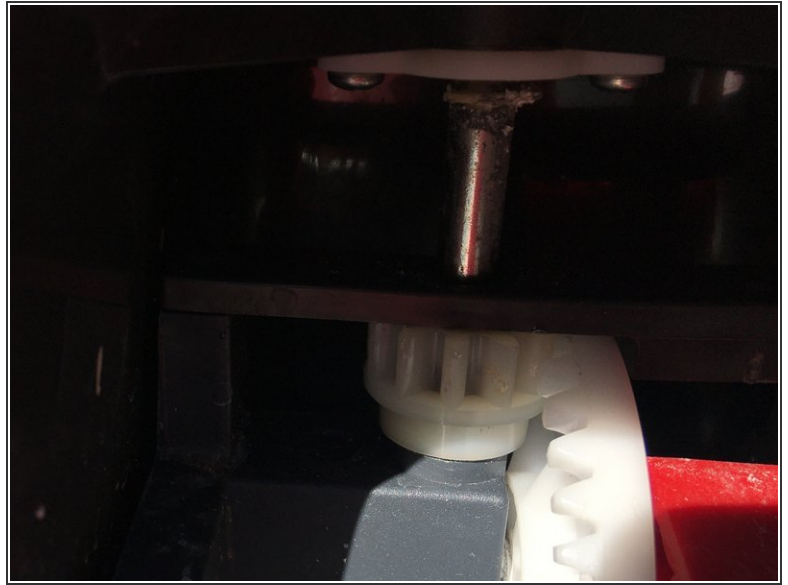
Not to worry. No parts are damaged. The One Way bearing / clutch has stuck, from water or moisture and just needs a drop or two of oil. Any oil you have will do just to free up the one way clutch / bearing and lubricate so it does not happen again for a while.



### PARTS:

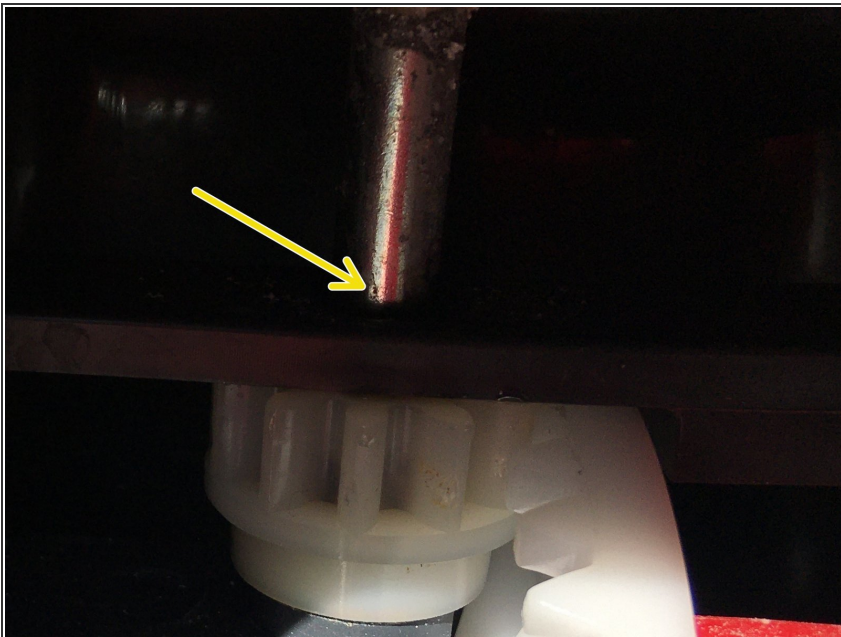
- [oil](#) (1)

## Step 1 — How to Repair a Vileda Turbo Mop Bucket Set



- No Parts Required

## Step 2



- Run the few drops of oil down the chrome shaft

Get back to work !