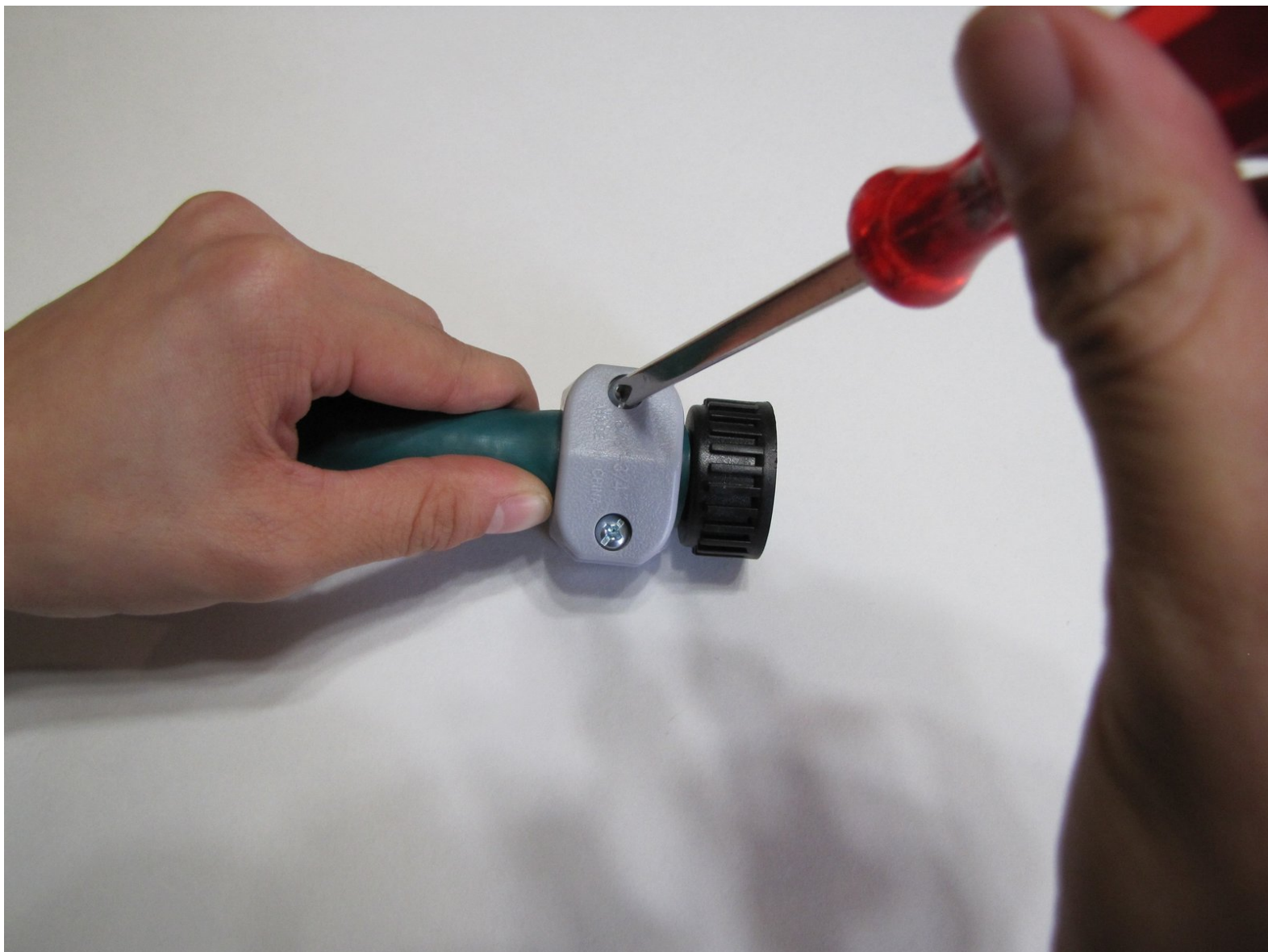




How to Repair the Broken End of a Garden Hose

Replace the broken end of your garden hose in six easy steps.

Written By: Jilian Whitehead



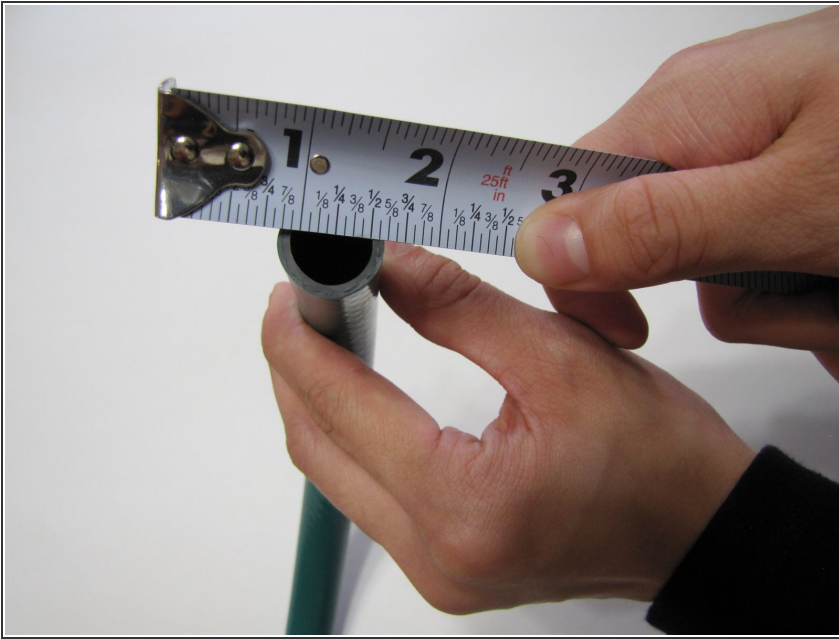
INTRODUCTION

Garden hoses can become crushed or ripped through usage. This guide shows you how to choose the right replacement and change the broken end easily and cheaply.

TOOLS:

- [Measuring Tape](#) (1)
 - [Utility Knife](#) (1)
 - [Phillips #2 Screwdriver](#) (1)
 - [Hose End](#) (1)
-

Step 1 — How to Repair the Broken End of a Garden Hose



- Measure the diameter of the inside of the original hose.

Step 2



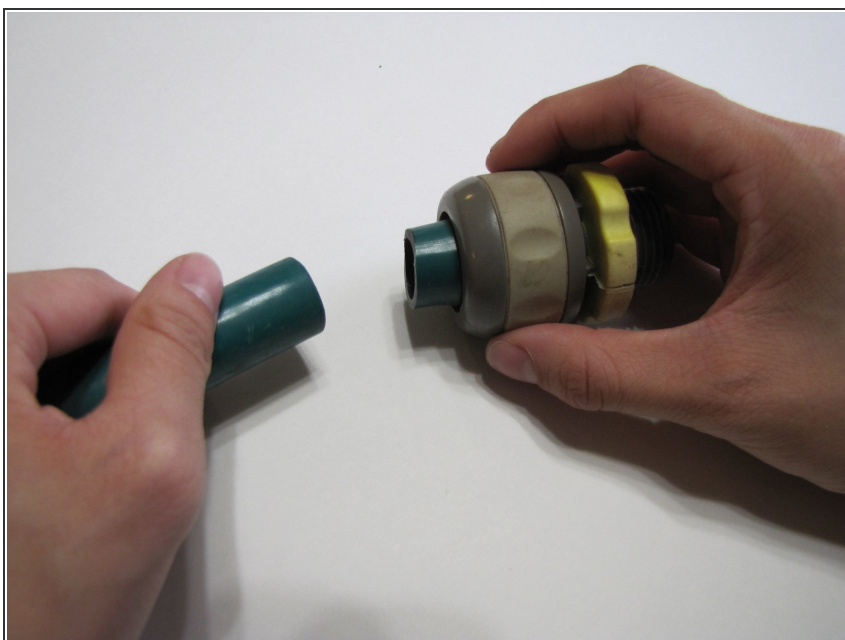
- Choose the right size of the hose end.
- ⓘ Know the difference between the male and female ends (the featured end is female).
- ⓘ Hoses typically come in sizes 5/8", 3/4", and 1/2".

Step 3



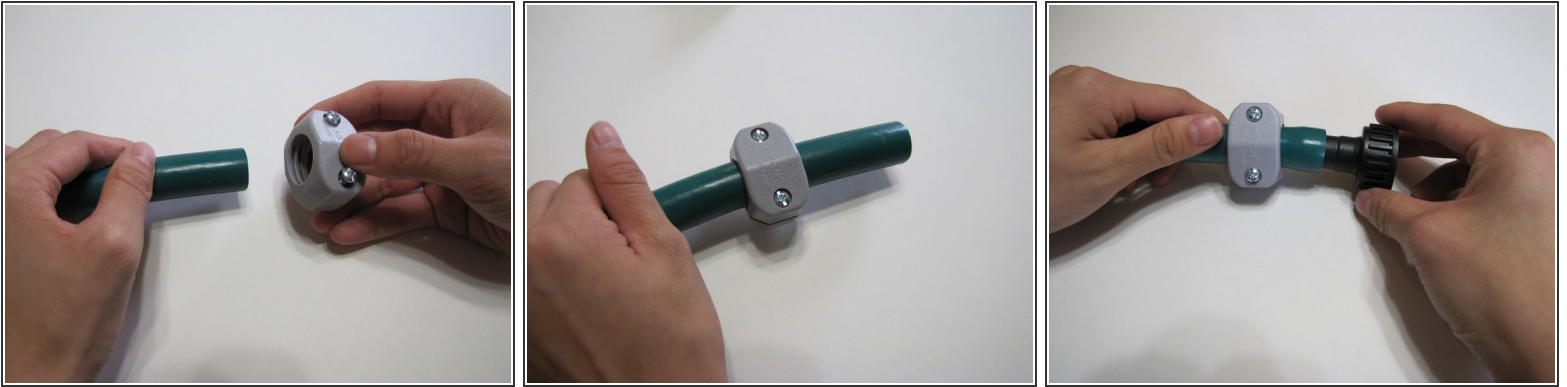
- Remove the original broken end by using a utility knife to cut 2-3 inches from the hose.
- ⓘ Place the hose on a flat surface such as a workbench, and perform a smooth, straight cut.


Step 4



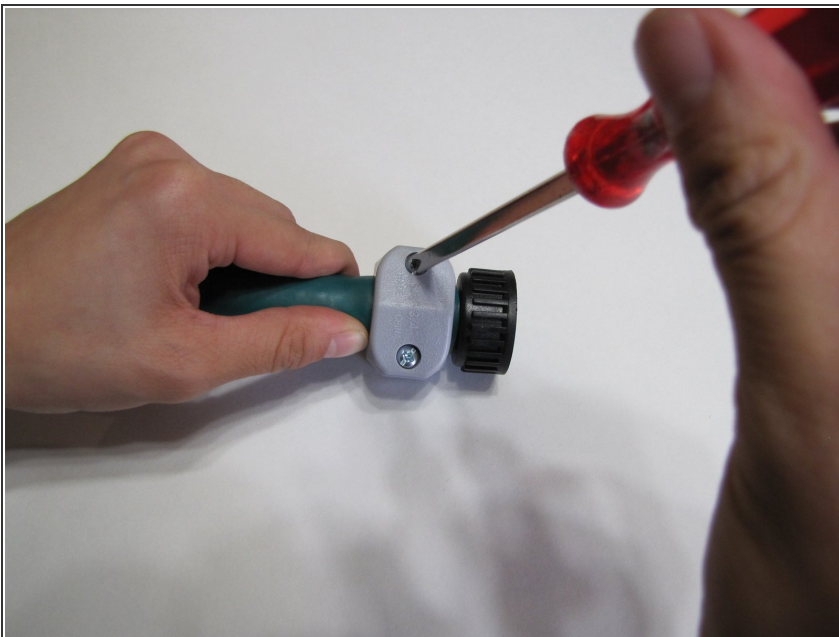
- Remove the fitting.

Step 5



- Attach the new fitting.
 - Slide the clamp onto the hose.
 - Insert the new fitting.
-  Soak the hose in warm water or let it sit in the sun to make it more pliable.

Step 6



- Tighten the clamp with a screwdriver.

Test your new and improved hose by turning on the water and watching for leaks.